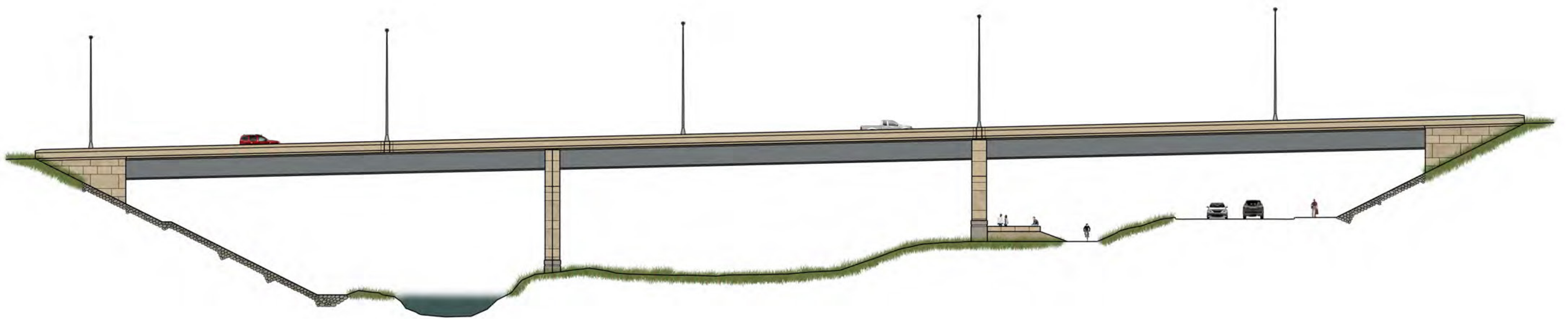


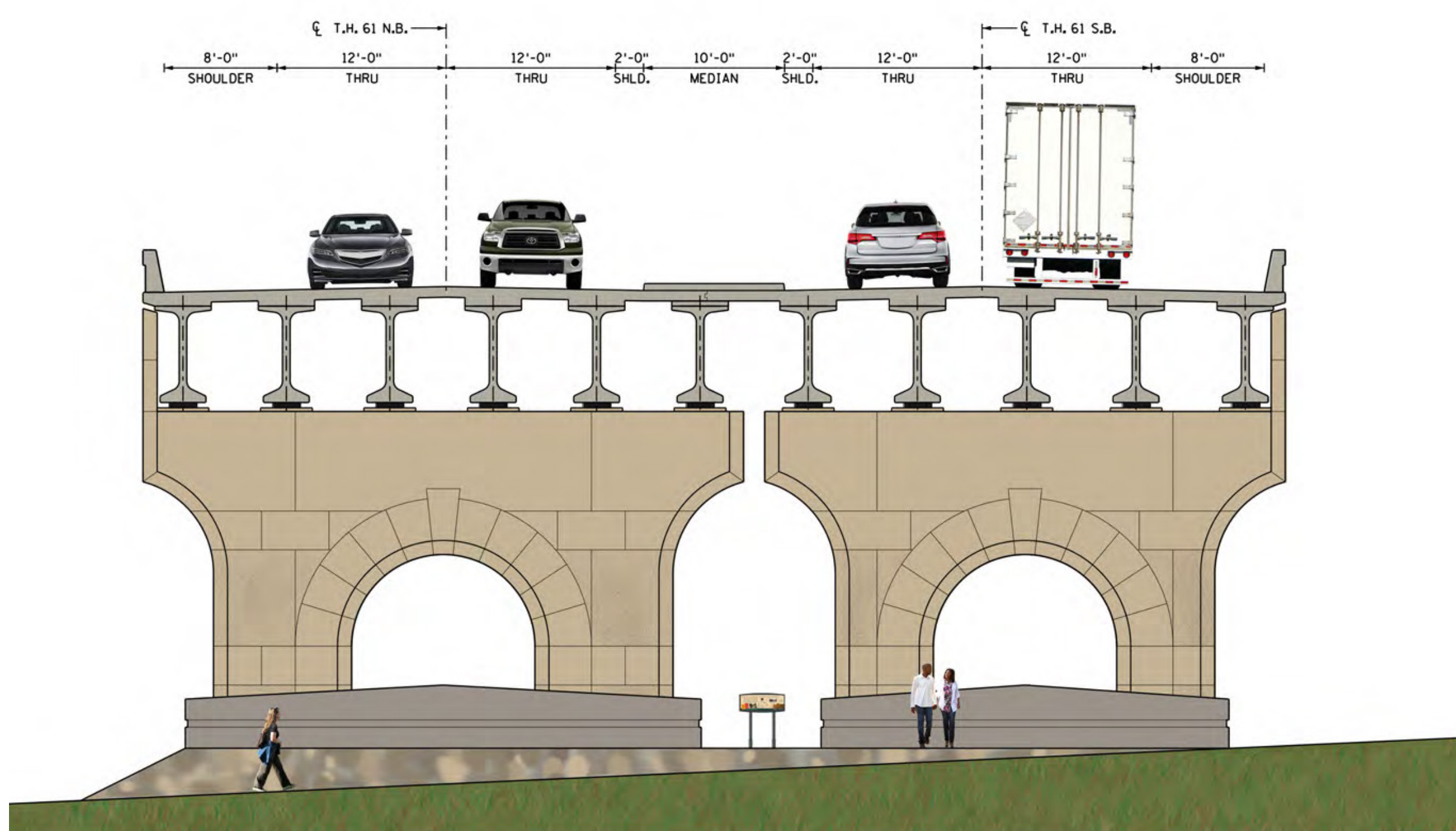
About this Project

- In 2023 and 2024, MnDOT will replace the Hwy 61 bridge over Withers Harbor Drive in Red Wing
- During construction, Hwy 61 traffic will be single-lane in each direction, head-to-head through the project
- Hwy 61 approaching the bridge will be reconstructed and improvements to the lighting system, drainage, and Hay Creek Trail will be made



Aesthetic Design

- MnDOT has worked with a team of local residents to develop aesthetic recommendations for the new bridge - including added trail amenities below the structure
- The new Hwy 61 bridge will have similar aesthetics to the newly constructed Hwy 63 bridge over the Mississippi River by utilizing similar style of piers, colors, and materials



Proposed Hwy 61 over Withers Harbor Drive Pier Design



New Hwy 63 over the Mississippi River Pier Design



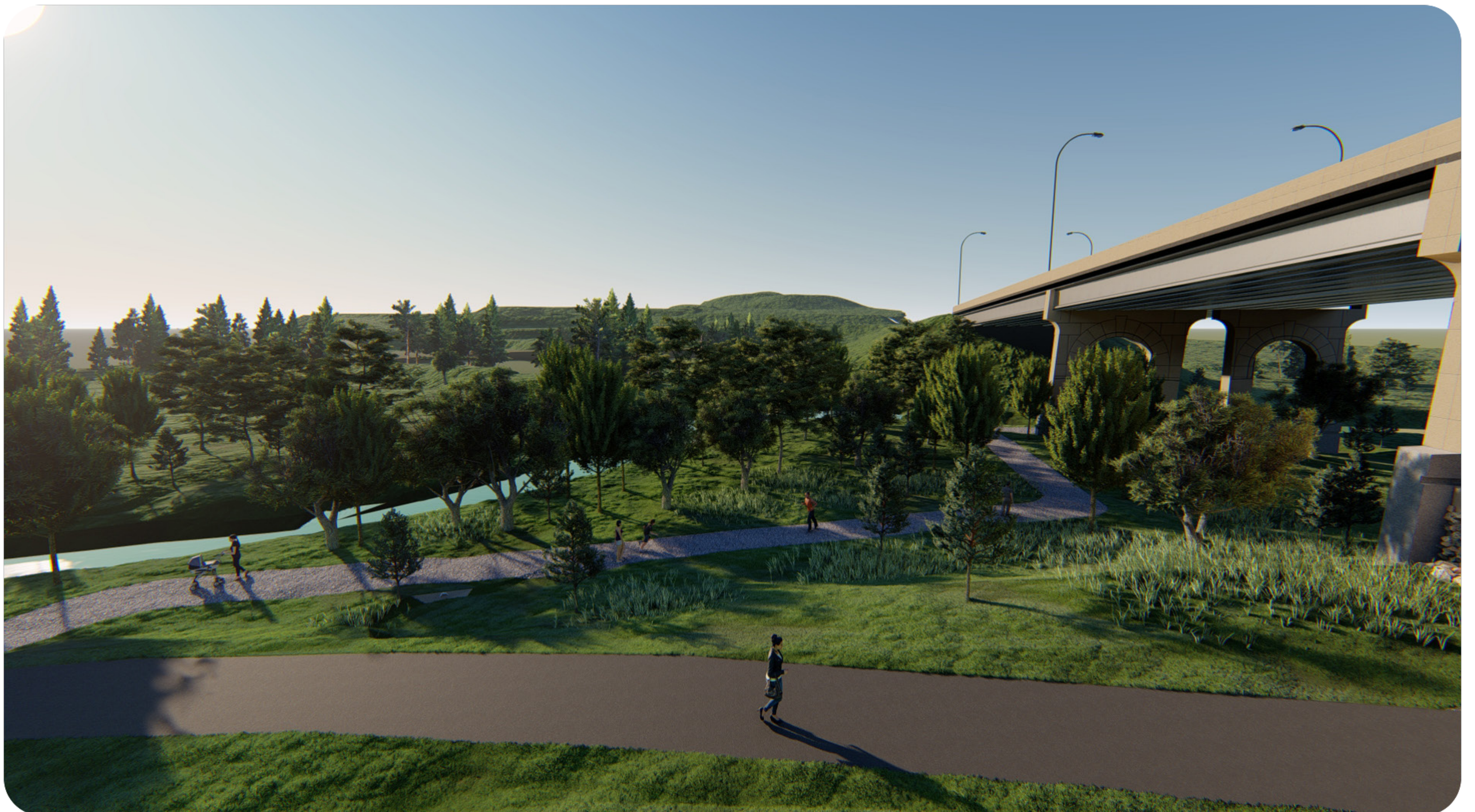
- During each construction season, Hwy 61 traffic will be a single lane in each direction
- A traffic study was completed to analyze the expected delay and impacts of the lane reduction
- Certain intersection traffic movements will be closed during construction to minimize travel time delay
- Withers Harbor Drive and Hay Creek Trail will remain open during the project, except for short-term closures



Proposed Gravel Path



This project will construct a gravel path to connect the paved Hay Creek Trail to Hay Creek under the bridge.



The proposed gravel path will offer an accessible connection from Hay Creek Trail and open up the creekside view to all users.

Hay Creek Trail Plaza and Pier Design

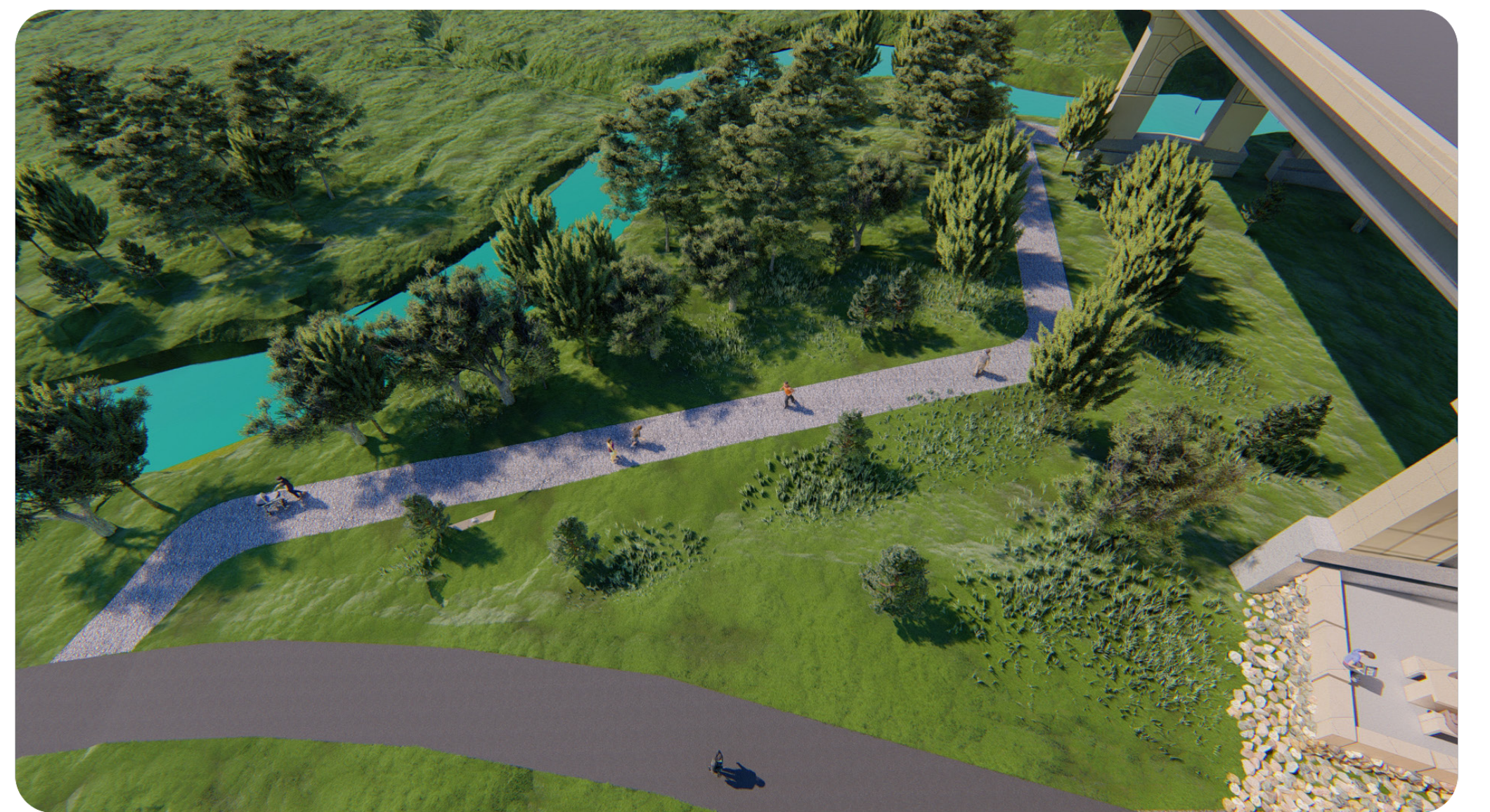


The proposed Hay Creek Trail Plaza will offer trail users an area of respite. Proposed amenities include tables, benches, bike racks, lighting, and more.

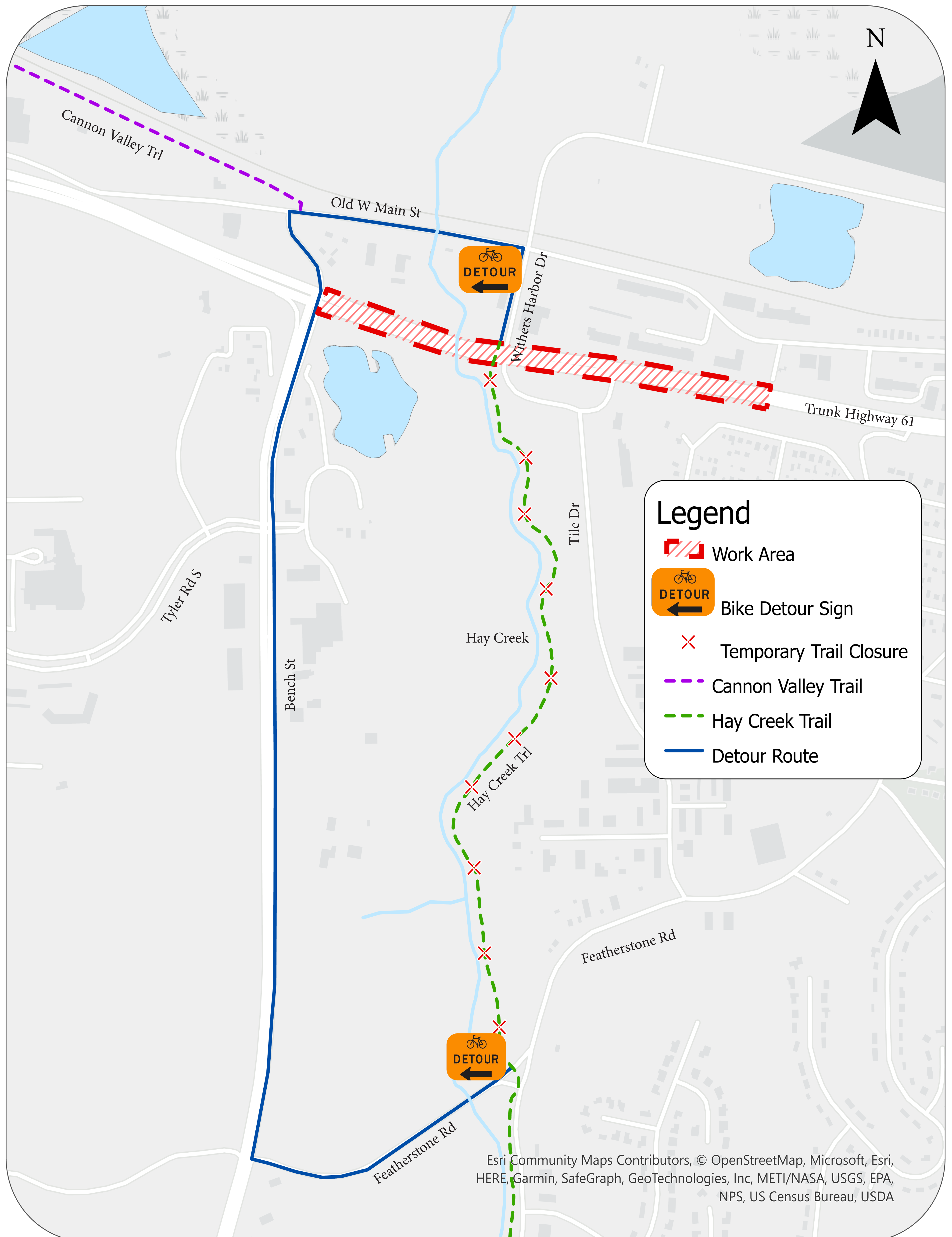


The Hay Creek Trail Plaza will be accessed from north of the Withers Harbor bridge.

Hay Creek Plaza and Path



Hay Creek Trail Bike Detour



Bike Trail Detour Route Map SP#2514-121

- An intermittent closure of the Hay Creek Trail will be required during construction while construction activities do not allow for safe passage under the bridge
- Bike traffic will be detoured onto Bench Street to cross Highway 61. Pedestrians will not have a detour option available