

Hwy 22/Hwy 109 Wells Draft Design Concept Engagement Summary

Public feedback collected July 9 – Aug. 5, 2021

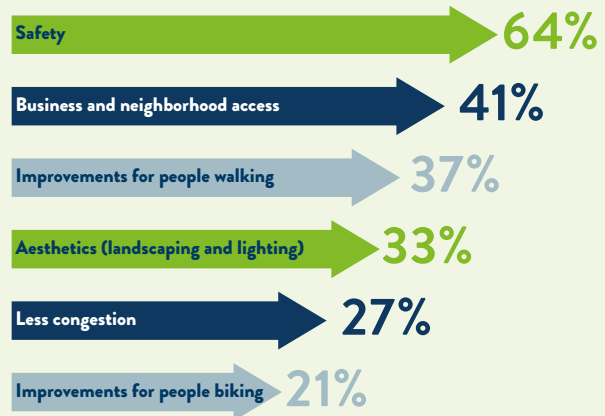
In summer 2021, MnDOT gathered community input on the draft design concepts for a future reconstruction project on Hwy 22 and Hwy 109 in Wells. Feedback was collected through an interactive map, online survey, and a pop-up booth at Wells Farmers Market. These comments will help MnDOT select safety improvements for people walking, biking, and driving on Hwy 22 and Hwy 109 for a future reconstruction project.



Wells Farmers Market pop-up

156 People provided feedback

Participants' top goals for the corridor improvements are:



Curb Extensions

Hwy 22/3rd St temporary curb extension



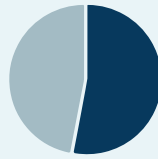
Some said a curb extension should be constructed near the pool and golf course where there are more pedestrians crossing Hwy 22 than at 3rd St.



Some said the temporary curb extension at Hwy 22/3rd St is confusing to drivers and pedestrians, and makes it difficult for trucks and large vehicles to turn

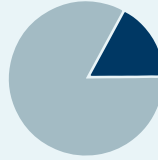
Bike Lanes

Hwy 109 temporary buffered bike lanes



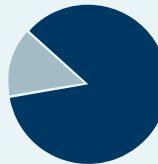
53%

Would feel comfortable biking in a bike lane without a buffer



17%

Would feel comfortable biking in a buffered bike lane



77%

Were concerned about removing parking to add bike lanes

- Some said designated bike route on side streets near the school and pool may be used more often than bike lanes on Hwy 22 and Hwy 109.
- While many said maintaining parking should be the priority for the design concepts, many people were also supportive of biking improvements and said that the design should accommodate both.

Parking

Participants had mixed views on removing or maintaining parking:

- Some said all parking should be removed to improve traffic flow on the road and that most residents park in their driveways.
- Some said on-street parking should not be removed as elderly residents need to have easy access to their homes and people visiting residents need a place to park.

If some parking is removed, there was some preference to maintain on-street parking at specific locations:

- North side of Hwy 109
- Near St. Casimir's Church on Hwy 22

No parking sign on Hwy 109



Trees

Many said trees should be maintained where it is possible.

Some said trees and bushes should be removed or trimmed to improve sightlines at:

- Hwy 22/Hwy 109
- Hwy 22/Franklin St
- Hwy 22/1st St SW

Other Comments

- Many supported the proposed truck apron at the Hwy 22/Hwy 109 intersection
- Some said more lighting should be added in the corridor
- Some said speeding is a concern through Wells