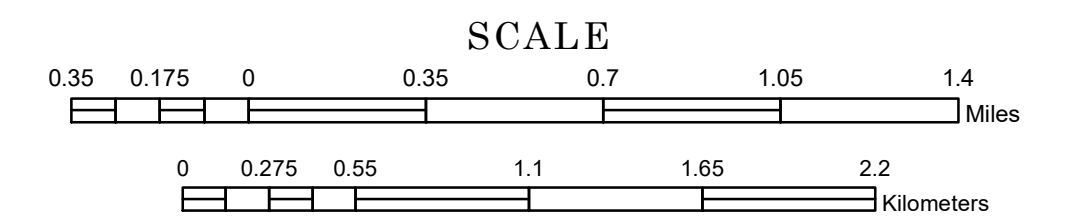


MUNICIPALITY OF MOORHEAD

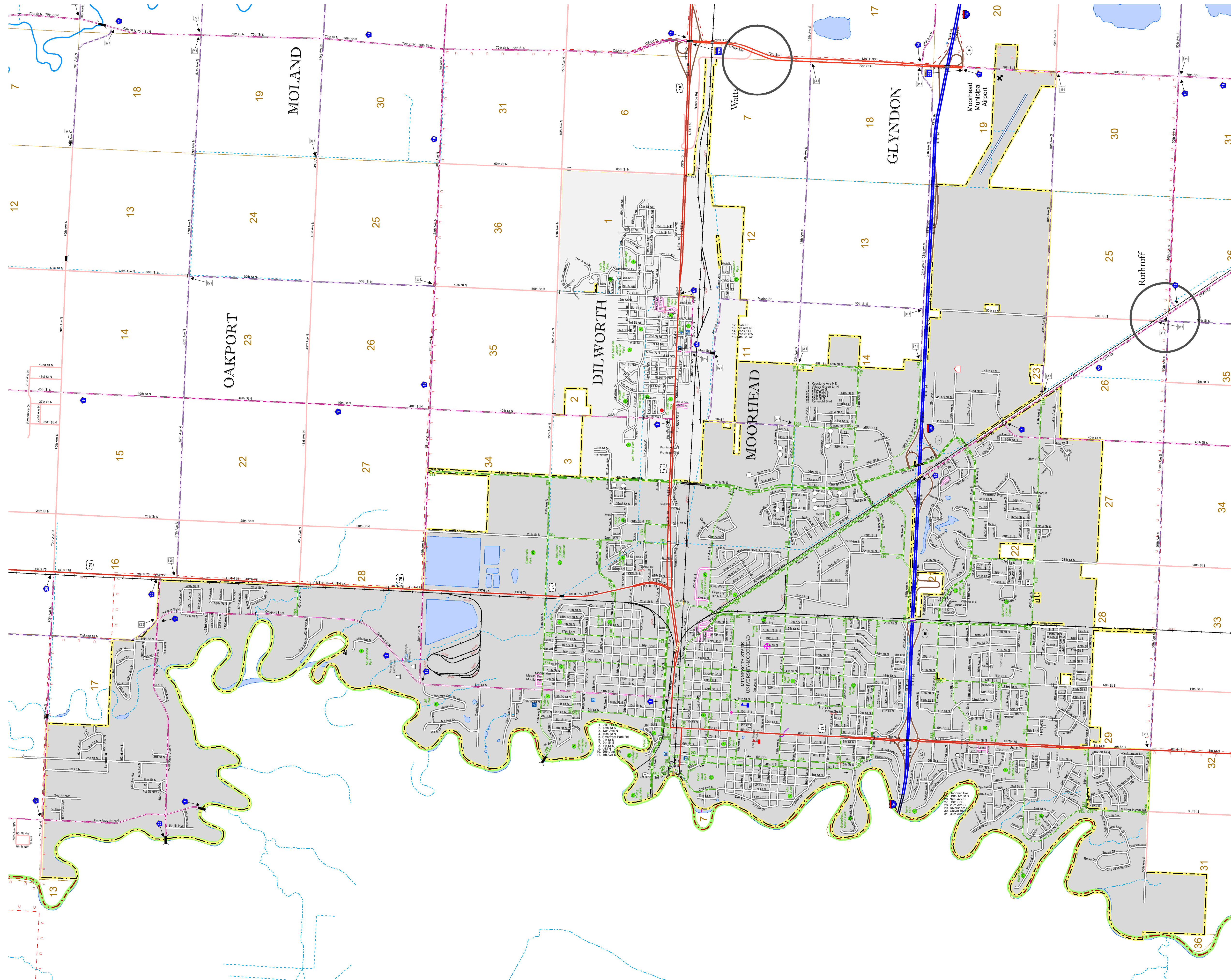
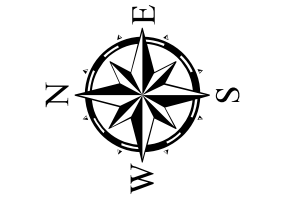
PREPARED BY THE
MINNESOTA DEPARTMENT OF TRANSPORTATION
OFFICE OF TRANSPORTATION SYSTEM MANAGEMENT

IN COOPERATION WITH
U.S. DEPARTMENT OF TRANSPORTATION
FEDERAL HIGHWAY ADMINISTRATION

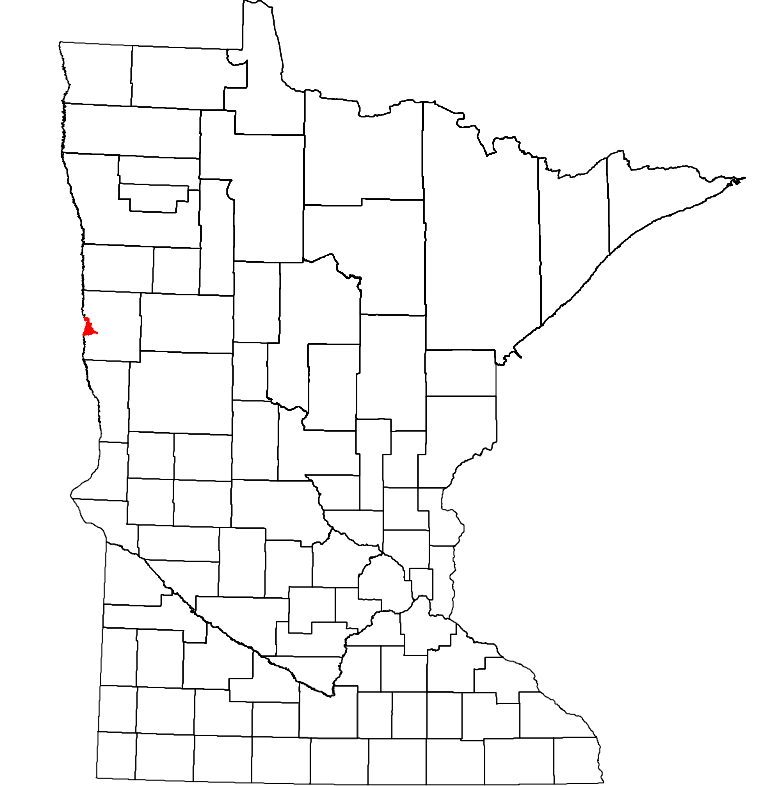


1 in = 2,000 ft
2023

Projection:
Transverse Mercator
NAD 1986
UTM Zone 15



ROAD AND ROADWAY FEATURES	PUBLIC SERVICE FEATURES
INTERSTATE	MINOT OFFICE
US HIGHWAY	MINOT TRUCK STATION
MN HIGHWAY	HIGHWAY PATROL DISTRICT OFFICE
COUNTY STATE AID HIGHWAY	STATE TRAVEL INFORMATION CENTER
COUNTY ROAD	REST AREA (FULL SERVICE)
MUNICIPAL STREET	REST AREA (VAULT TRAILS)
MUNICIPAL STATE AID STREET	WAYSIDE (VAULT OR PIT TOLLS)
PRIVATE STREET/ROAD	PUBLIC ACCESS POINT
TOWNSHIP ROAD	LOCAL PARK
UNORGANIZED TERRITORY ROAD	PARKGROUNDS
RAMP OR CONNECTOR	PORT OF ENTRY
INTERSTATE EXIT	PARK AND RIDE LOT
GREAT RIVER ROAD	PUBLIC ACCESS POINT
OTHER ROAD	PRIVATE UNIVERSITY/COLLEGE
Freeway	Private University/College
Rural Service	Elementary School
Mulvey	Middle School
	High School
RAILROAD AND RAILWAY FEATURES	AVIATION FEATURES
RAILWAY	COMMERCIAL AIRPORT
EMPIRE BUILDER STATION (AMTRAK)	GENERAL AIRPORT
NORTHSTAR STATION (COMMUTER)	AIRSTRIP
LIGHT RAIL	SEAPLANE
BLUE LINE STATION	AIRPORT RUNWAY
GREEN LINE STATION	
INFRASTRUCTURE FEATURES	CULTURAL FEATURES
LONG BRIDGE (100' OR GREATER SPAN)	STATE HISTORICAL MARKER
MAJOR BRIDGE (20' TO 100' SPAN)	HISTORIC DISTRICT
MINOR BRIDGE (5' TO 20' SPAN)	HISTORIC SITE
ROAD TUNNEL (100' OR GREATER SPAN)	MONUMENT
RAILROAD BRIDGE (100' OR GREATER SPAN)	CEMETERY
RAILROAD BRIDGE (UNDER 100' SPAN)	
BOATWAY	BOUNDARY FEATURES
PEDESTRIAN BRIDGE	TRIBAL LAND
PEDESTRIAN TUNNEL	COUNTY
DAM	MUNICIPALITY
LOCK AND DAM	ADJACENT MUNICIPALITY
PUBLIC FACILITIES	FEDERAL ADJUSTED URBAN AREA (2014)
FEDERAL CAPITOL	MILITARY
COUNTY COURTHOUSE	STATE PARK
ARMORY	REGIONAL PARK
CITY HALL	NATIONAL FOREST
TOWN HALL	NATIONAL AND STATE FOREST
COMMUNITY CENTER	STATE FOREST
ARENA	NATIONAL TRAIL
STADIUM	WILDLIFE REFUGUE AREA
POST OFFICE	WILDLIFE MANAGEMENT AREA
POLICE STATION	
FIRE STATION	HYDROLOGIC FEATURES
PUBLIC LIBRARY	RIVER OR STREAM (PERENNIAL)
PUBLIC MUSEUM	LAKE, POND OR RESERVOIR
EVENT CENTER	STREAM (INTERMITTENT)
	SPRINGS/DITCH
	WETLAND
	ISLAND OR LAND
	REGIONAL WATERSHED
CITY CENTERS	
TRIBAL GOVERNMENT CENTER	
CITY CENTER	
LOCALLY KNOWN PLACE	
UNINCORPORATED COMMUNITY	



LAST EDITED ON 1-29-2024

Population (U.S. Census 2020): 44,505

To request information from this document in an alternative format, call 651-666-4718 or 1-800-657-3774 (Greater Minnesota); 711 or 1-800-627-3529 (Minnesota Relay). You may also send an e-mail to ADArequest.dot@state.mn.us. (Please request at least one week in advance.)