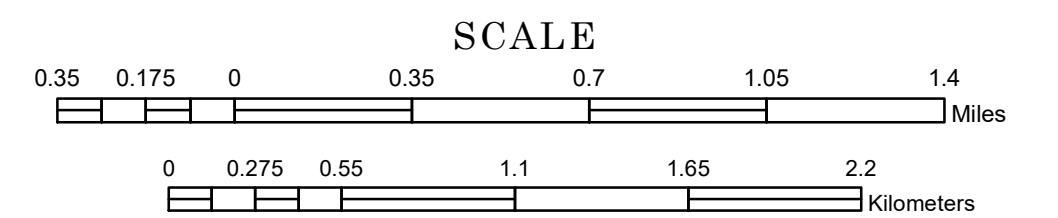


MUNICIPALITY OF SHAKOPEE

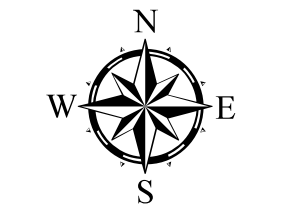
PREPARED BY THE
MINNESOTA DEPARTMENT OF TRANSPORTATION
OFFICE OF TRANSPORTATION SYSTEM MANAGEMENT

IN COOPERATION WITH
U.S. DEPARTMENT OF TRANSPORTATION
FEDERAL HIGHWAY ADMINISTRATION

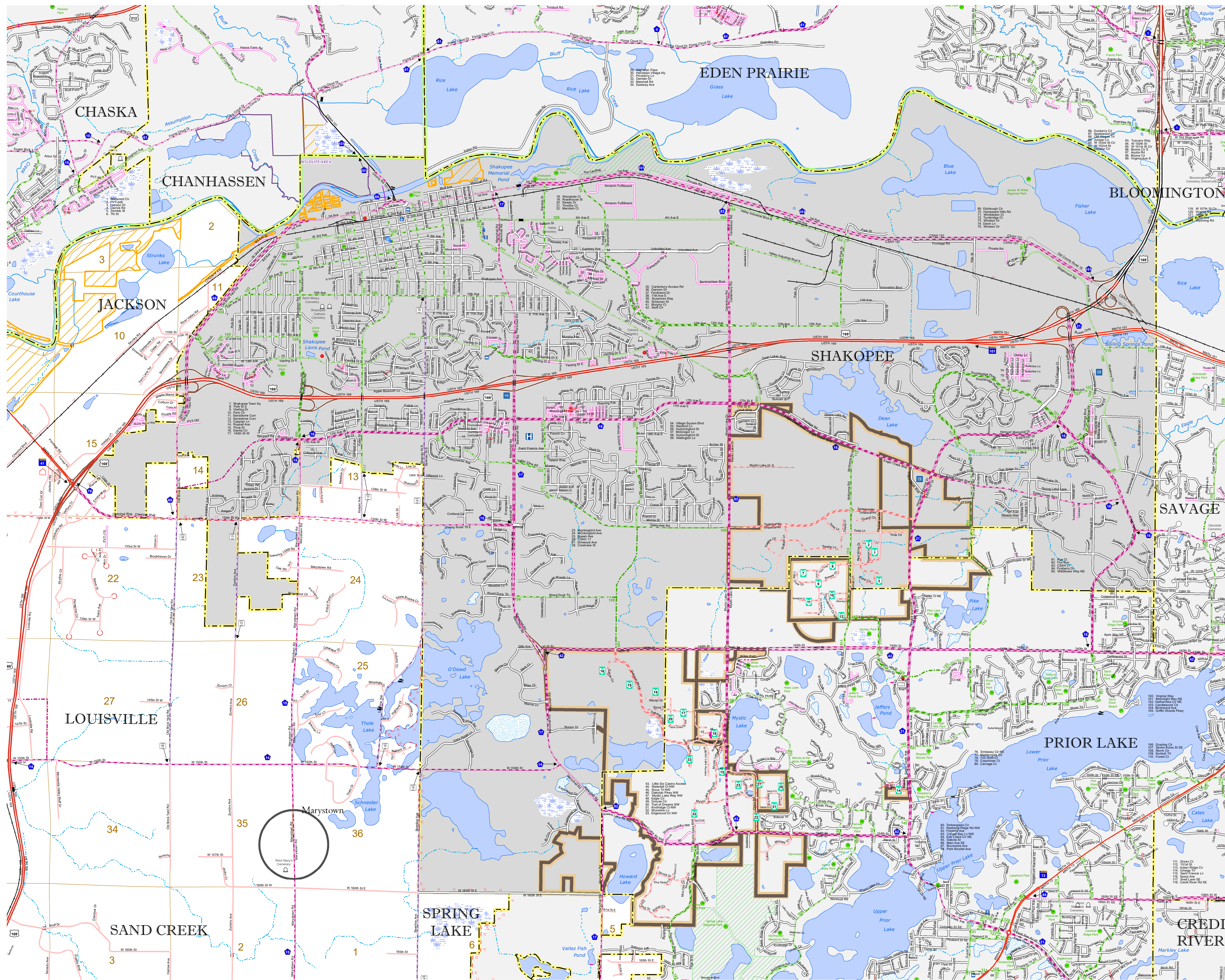


1 in = 2,000 ft
2023

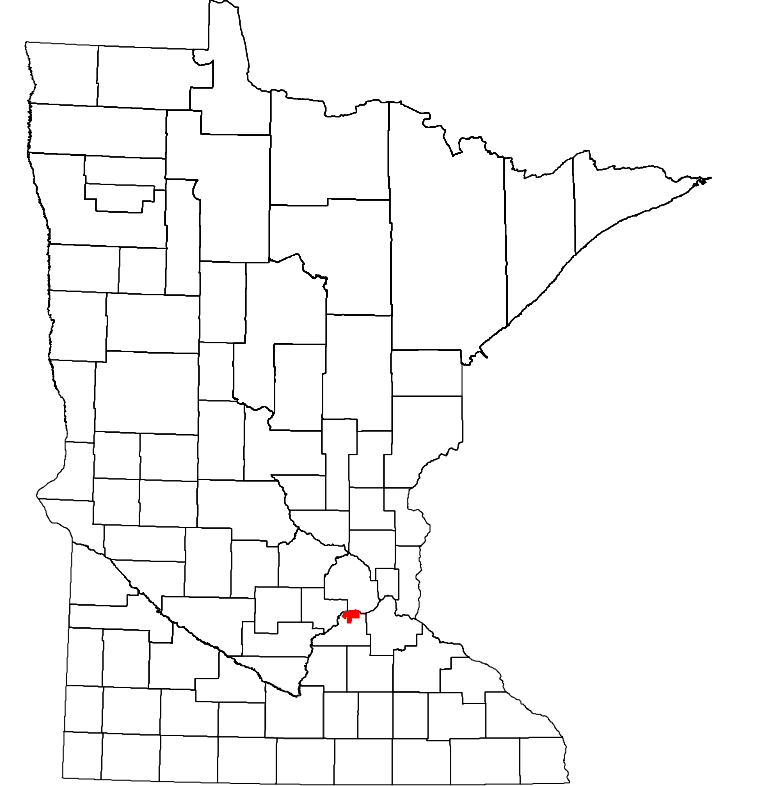
Projection:
Transverse Mercator
NAD 1986
UTM Zone 15



North American Datum
of 1986



ROAD AND ROADWAY FEATURES	PUBLIC SERVICE FEATURES
INTERSTATE	MINUT OFFICE
US HIGHWAY	MINUT TRUCK STATION
MIN HIGHWAY	HIGHWAY PATROL DISTRICT OFFICE
COUNTY STATE AID HIGHWAY	STATE TRAVEL INFORMATION CENTER
COUNTY ROAD	REST AREA (FULL SERVICE)
MUNICIPAL STREET	REST AREA (WALK TRAILS)
MUNICIPAL STATE AID STREET	WAYSIDE (WAIT OR PIT TRAIL)
PRIVATE STREET/ROAD	PUBLIC ACCESS POINT
TOWNSHIP ROAD	LOCAL PARK
UNORGANIZED TERRITORY ROAD	FAIRGROUNDS
RAMP OR CONNECTOR	PORT OF ENTRY
INTERSTATE EXIT	PARK AND RIDE LOT
GREAT RIVER ROAD	PUBLIC UNIVERSITY/COLLEGE
OTHER ROAD	PRIVATE UNIVERSITY/COLLEGE
RAILROAD AND RAILWAY FEATURES	ELEMENTARY SCHOOL
EMPIRE BUILDER STATION (AMTRAK)	MIDDLE SCHOOL
NORTHSTAR STATION (COMCAST)	HIGH SCHOOL
LIGHT RAIL	AVIATION FEATURES
BLUE LINE STATION	COMMERCIAL AIRPORT
GREEN LINE STATION	GENERAL AIRPORT
INFRASTRUCTURE FEATURES	ARREST
LONG BRIDGE (100' OR GREATER SPAN)	SEAPLANE
MAJOR BRIDGE (20' TO 100' SPAN)	AIRPORT RUNWAY
MINOR BRIDGE (5' TO 20' SPAN)	CULTURAL FEATURES
ROAD TUNNEL (100' OR GREATER SPAN)	STATE HISTORICAL MARKER
RAILROAD BRIDGE (100' OR GREATER SPAN)	HISTORIC DISTRICT
RAILROAD BRIDGE (UNDER 100' SPAN)	HISTORIC SITE
BOATWAY	MONUMENT
PEDESTRIAN BRIDGE	CEMETERY
PEDESTRIAN TUNNEL	BOUNDARY FEATURES
DAM	TRIBAL LAND
LOCK AND DAM	COUNTY
PUBLIC FACILITIES	MUNICIPALITY
STATE CAPITOL	ADJACENT MUNICIPALITY
FEDERAL COURTHOUSE	FEDERAL ADJUSTED URBAN AREA (2014)
COUNTY COURTHOUSE	MILITARY
TOWN HALL	STATE PARK
CITY HALL	REGIONAL PARK
ARMORY	NATIONAL FOREST
CITY LIBRARY	NATIONAL AND STATE FOREST
COMALUNITY CENTER	STATE FOREST
ARENA	NATIONAL TRAIL
STADIUM	WILDLIFE REFUGE AREA
POST OFFICE	WILDLIFE MANAGEMENT AREA
POLICE STATION	HYDROLOGIC FEATURES
FIRE STATION	RIVER OR STREAM (PERMANENT)
PUBLIC LIBRARY	LAKE, POND OR RESERVOIR
PUBLIC MUSEUM	STREAM (SEASONAL)
EVENT CENTER	DRAINAGE DITCH
CITY CENTERS	WETLAND
TRIBAL GOVERNMENT CENTER	ISLAND OR LAND
CITY CENTER	REGIONAL WATERSHED
LOCALLY KNOWN PLACE	
UNINCORPORATED COMMUNITY	



To request information from this document in an alternative format, call 651-366-4718 or 1-800-657-3774 (Greater Minnesota); 711 or 1-800-627-3529 (Minnesota Relay). You may also send an e-mail to ADRequest.dot@state.mn.us. (Please request at least one week in advance.)

LAST EDITED ON 2-06-2024

Population (U.S. Census 2020): 43,698