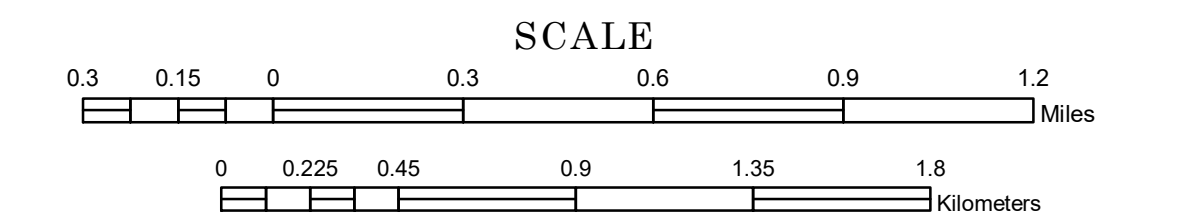


# MUNICIPALITY OF CHASKA

PREPARED BY THE  
MINNESOTA DEPARTMENT OF TRANSPORTATION  
OFFICE OF TRANSPORTATION SYSTEM MANAGEMENT

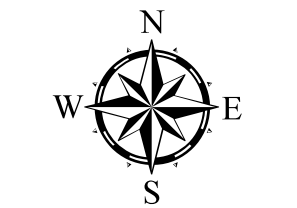
IN COOPERATION WITH  
U.S. DEPARTMENT OF TRANSPORTATION  
FEDERAL HIGHWAY ADMINISTRATION



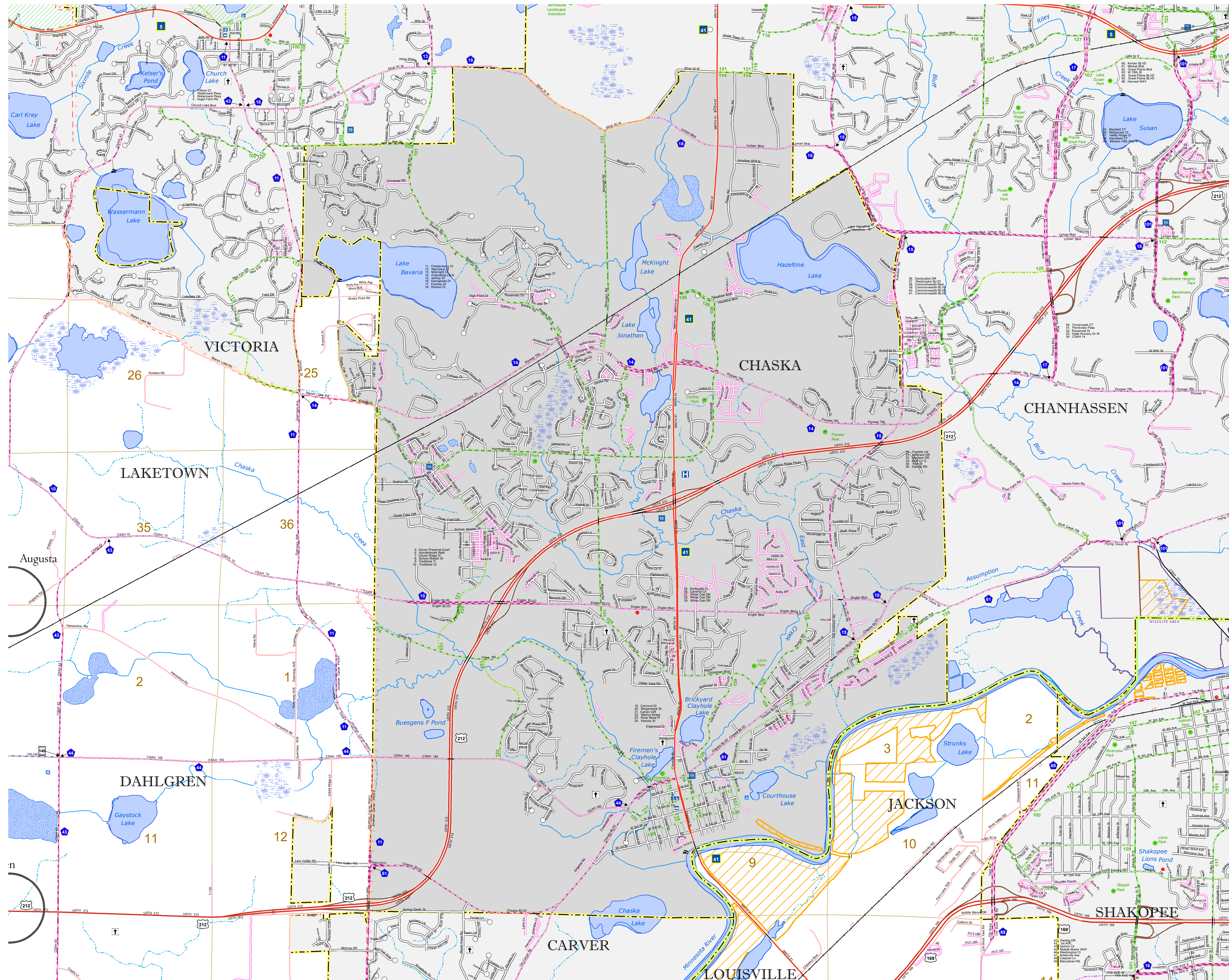
1 in = 1,600 ft

2019

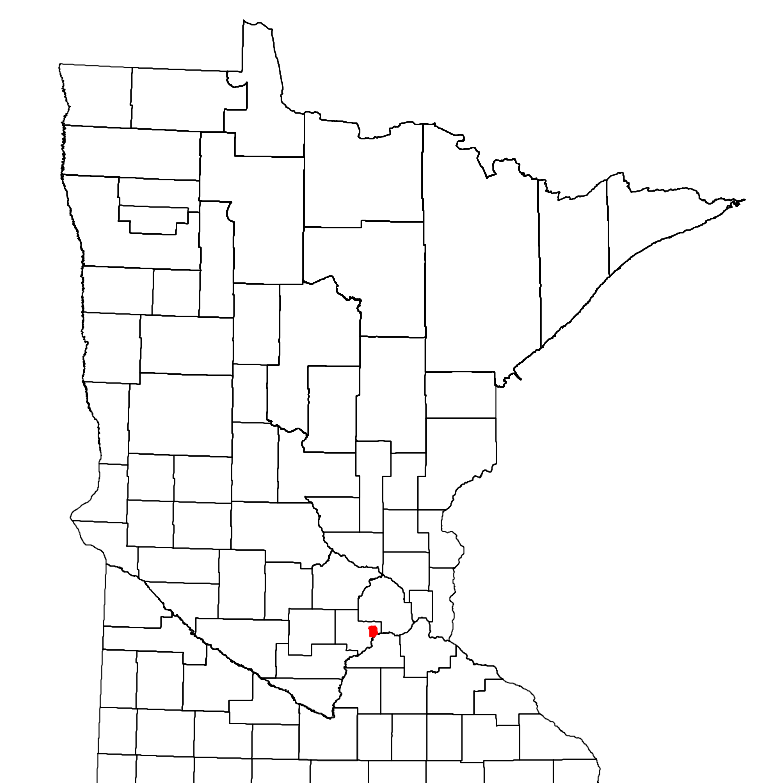
Projection:  
Transverse Mercator  
NAD 1986  
UTM Zone 15



North American Datum  
of 1986



ROAD AND ROADWAY FEATURES		PUBLIC SERVICE FEATURES	
INTERSTATE		MINDOT OFFICE	
US HIGHWAY		MINDOT TRUCK STATION	
MN HIGHWAY		HIGHWAY PATROL DISTRICT OFFICE	
COUNTY STATE AID HIGHWAY		STATE TRAVEL INFORMATION CENTER	
COUNTY ROAD		REST AREA (FULL SERVICE)	
MUNICIPAL STATE AID STREET		REST AREA (VAULT TOILET)	
MUNICIPAL STREET		WIDEWAY (ONLY OR P/TY TOILET)	
PRIVATE STREET/ROAD		LOCAL PARK	
TOWNSHIP ROAD		PUBLIC ACCESS POINT	
UNORGANIZED TERRITORY ROAD		FARMS	
RAMP OR CONNECTOR		PORT OF ENTRY	
INTERSTATE EXIT		PARK AND RIDE LOT	
GREAT RIVER ROAD		PUBLIC UNIVERSITY/COLLEGE	
OTHER ROADS		PRIVATE UNIVERSITY/COLLEGE	
Frontage		State Park	
National Park		National Monument	
State Forest		National Wildlife Refuge	
State Game		CULTURAL FEATURES	
STATE HISTORICAL MARKER		STATE HISTORICAL MARKER	
HISTORIC DISTRICT		HISTORIC DISTRICT	
MONUMENT		MONUMENT	
BOUNDARY FEATURES		BOUNDARY FEATURES	
TRIBAL LAND		TRIBAL LAND	
COUNTY		COUNTY	
MUNICIPALITY		MUNICIPALITY	
ADJACENT MUNICIPALITY		ADJACENT MUNICIPALITY	
FEDERAL ADJUSTED URBAN AREA (2014)		FEDERAL ADJUSTED URBAN AREA (2014)	
MILITARY		MILITARY	
VOYAGEURS NATIONAL PARK		VOYAGEURS NATIONAL PARK	
BOUNDARY WATERS CANOE AREA WILDERNESS		BOUNDARY WATERS CANOE AREA WILDERNESS	
STATE PARK		STATE PARK	
REGIONAL PARK		REGIONAL PARK	
NATIONAL FOREST		NATIONAL FOREST	
NATIONAL AND STATE FOREST		NATIONAL AND STATE FOREST	
STATE FOREST		STATE FOREST	
NATIONAL TRAIL		NATIONAL TRAIL	
WILDLIFE REFUGE AREA		WILDLIFE REFUGE AREA	
WILDLIFE MANAGEMENT AREA		WILDLIFE MANAGEMENT AREA	
HYDROLOGIC FEATURES		HYDROLOGIC FEATURES	
RIVER OR STREAM (PERMANENT)		RIVER OR STREAM (PERMANENT)	
LAKE, POND OR RESERVOIR		LAKE, POND OR RESERVOIR	
STREAM (INTERMITTENT)		STREAM (INTERMITTENT)	
DRAINAGE DITCH		DRAINAGE DITCH	
WETLAND		WETLAND	
ISLAND OR LAND		ISLAND OR LAND	
REGIONAL WATERSHED		REGIONAL WATERSHED	



Population (U.S. Census 2010): 23770

To request information from this document in an alternative format, call 651-366-4718 or 1-800-657-3774 (Greater Minnesota); 711 or 1-800-627-3529 (Minnesota Relay). You may also send an e-mail to [ADArequest.dot@state.mn.us](mailto:ADArequest.dot@state.mn.us). (Please request at least one week in advance.)