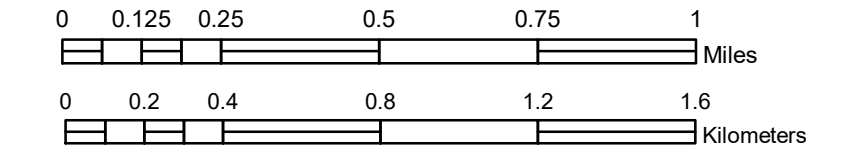


MUNICIPALITY OF MINNEAPOLIS

PREPARED BY THE
MINNESOTA DEPARTMENT OF TRANSPORTATION
OFFICE OF TRANSPORTATION SYSTEM MANAGEMENT

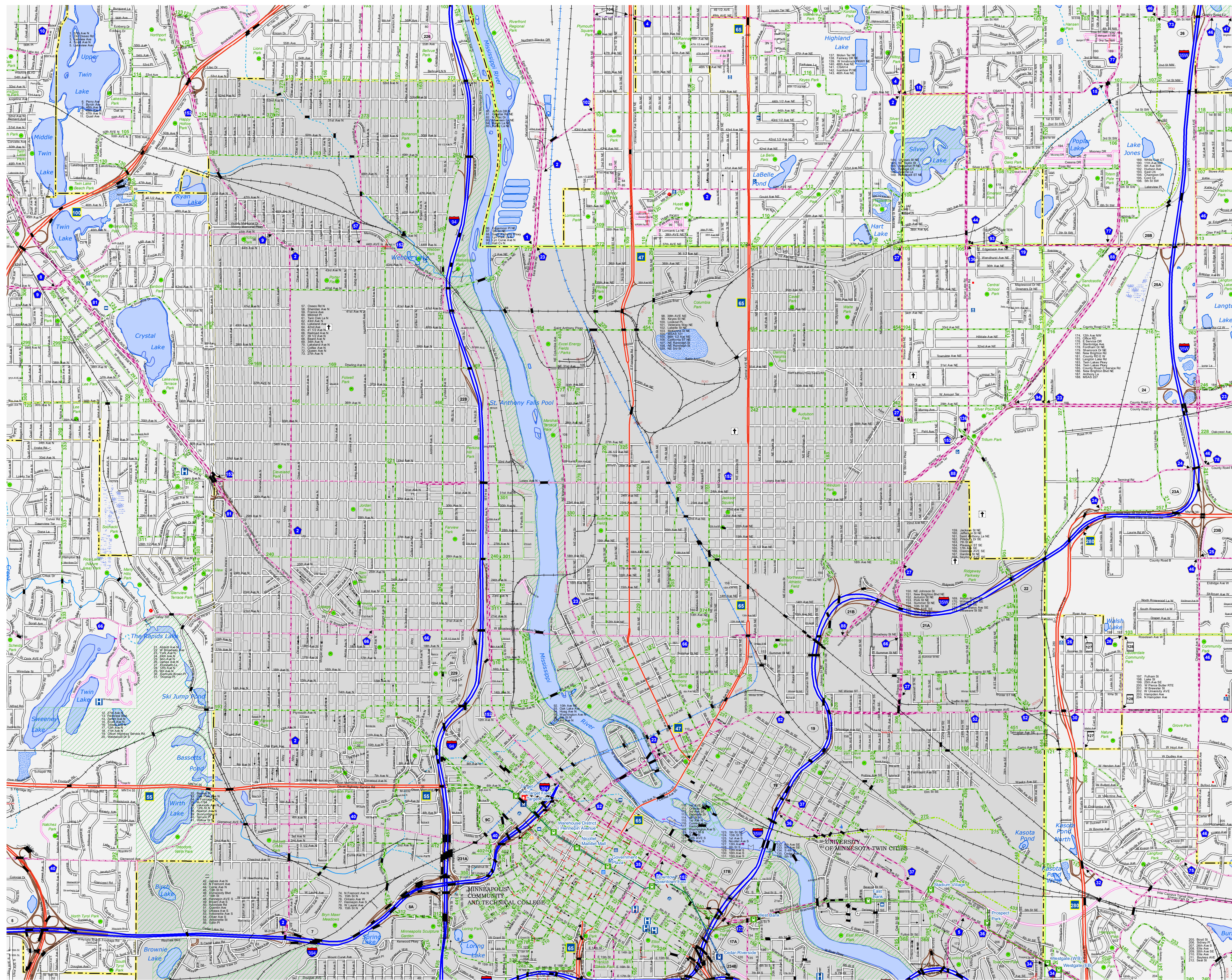
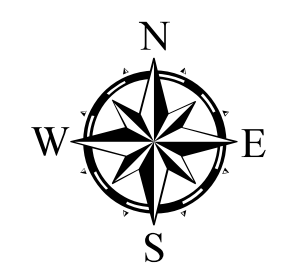
IN COOPERATION WITH
U.S. DEPARTMENT OF TRANSPORTATION
FEDERAL HIGHWAY ADMINISTRATION

SCALE

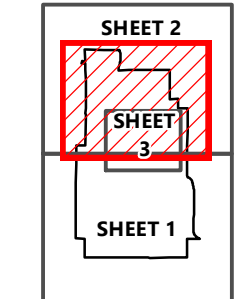
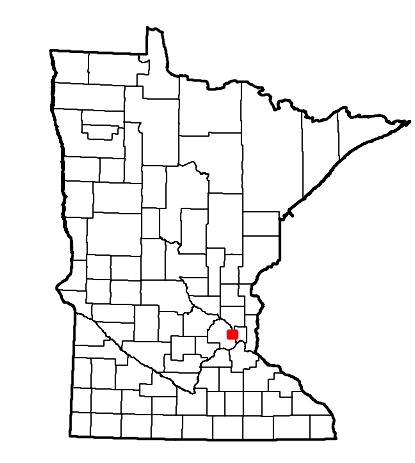


1 in = 1,600 ft

2019



ROAD AND ROADWAY FEATURES		PUBLIC SERVICE FEATURES	
INTERSTATE		MINDOT OFFICE	
US HIGHWAY		MINDOT TRUCK STATION	
MN HIGHWAY		HIGHWAY PATROL DISTRICT OFFICE	
COUNTY STATE AID HIGHWAY		STATE TRAVEL INFORMATION CENTER	
COUNTY ROAD		REST AREA (FULL SERVICE)	
MUNICIPAL STATE AID STREET		REST AREA (VAULT TOILET)	
MUNICIPAL STREET		WAYSIDE (VAULT OR PIT TOILET)	
PRIVATE STREET/ROAD		LOCAL PARK	
TOWNSHIP ROAD		PUBLIC ACCESS POINT	
UNORGANIZED TERRITORY ROAD		FAIRGROUNDS	
RAMP OR CONNECTOR		PART OF ENTRY	
INTERSTATE EXIT		PARK AND RIDE LOT	
GREAT RIVER ROAD		MN STATE COLLEGE AND UNIVERSITY SYSTEM (MNSCU)	
OTHER ROADS		UNIVERSITY OF MN SYSTEM	
FRONTAGE		CULTURAL FEATURES	
INDIAN SERVICE		STATE HISTORICAL MARKER	
NATIONAL PARK		HISTORIC DISTRICT	
NATIONAL MONUMENT		HISTORIC SITE	
NATIONAL FOREST		MONUMENT	
NATIONAL WILDLIFE STATE GAME		BOUNDARY FEATURES	
AMATION FEATURES		TRIBAL LAND	
STATE HISTORICAL MARKER		COUNTY	
HISTORIC DISTRICT		MUNICIPALITY	
HISTORIC SITE		ADJACENT MUNICIPALITY	
MONUMENT		FEDERAL ADJUSTED URBAN AREA (2014)	
BOUNDARY FEATURES		MILITARY	
TRIBAL LAND		VOYAGEURS NATIONAL PARK	
COUNTY		BOUNDARY WATERS CANOE AREA WILDERNESS	
MUNICIPALITY		STATE PARK	
ADJACENT MUNICIPALITY		REGIONAL PARK	
FEDERAL ADJUSTED URBAN AREA (2014)		NATIONAL FOREST	
MILITARY		NATIONAL AND STATE FOREST	
VOYAGEURS NATIONAL PARK		STATE FOREST	
BOUNDARY WATERS CANOE AREA WILDERNESS		NATIONAL TRAIL	
STATE PARK		WILDLIFE REFUGE AREA	
REGIONAL PARK		WILDLIFE MANAGEMENT AREA	
NATIONAL FOREST		HYDROLOGIC FEATURES	
NATIONAL AND STATE FOREST		RIVER OR STREAM (PERMANENT)	
STATE FOREST		LAKE, POND OR RESERVOIR	
NATIONAL TRAIL		STREAM (INTERMITTENT)	
WILDLIFE REFUGE AREA		DRAINAGE DITCH	
WILDLIFE MANAGEMENT AREA		WETLAND	
HYDROLOGIC FEATURES		ISLAND OR LAND	
RIVER OR STREAM (PERMANENT)		REGIONAL WATERSHED	
LAKE, POND OR RESERVOIR			
STREAM (INTERMITTENT)			
DRAINAGE DITCH			
WETLAND			
ISLAND OR LAND			
REGIONAL WATERSHED			



To request information from this document in an alternative format, call 651-366-4718 or 1-800-657-3774 (Greater Minnesota); 711 or 1-800-627-3529 (Minnesota Relay). You may also send an e-mail to ADRequest.dot@state.mn.us. (Please request at least one week in advance.)

Population (U.S. Census 2010): 382,578