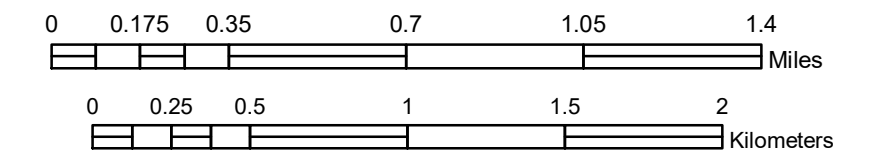


MUNICIPALITY OF SAINT CLOUD

PREPARED BY THE
MINNESOTA DEPARTMENT OF TRANSPORTATION
OFFICE OF TRANSPORTATION SYSTEM MANAGEMENT

IN COOPERATION WITH
U.S. DEPARTMENT OF TRANSPORTATION
FEDERAL HIGHWAY ADMINISTRATION

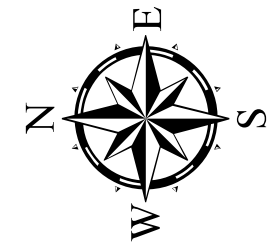
SCALE



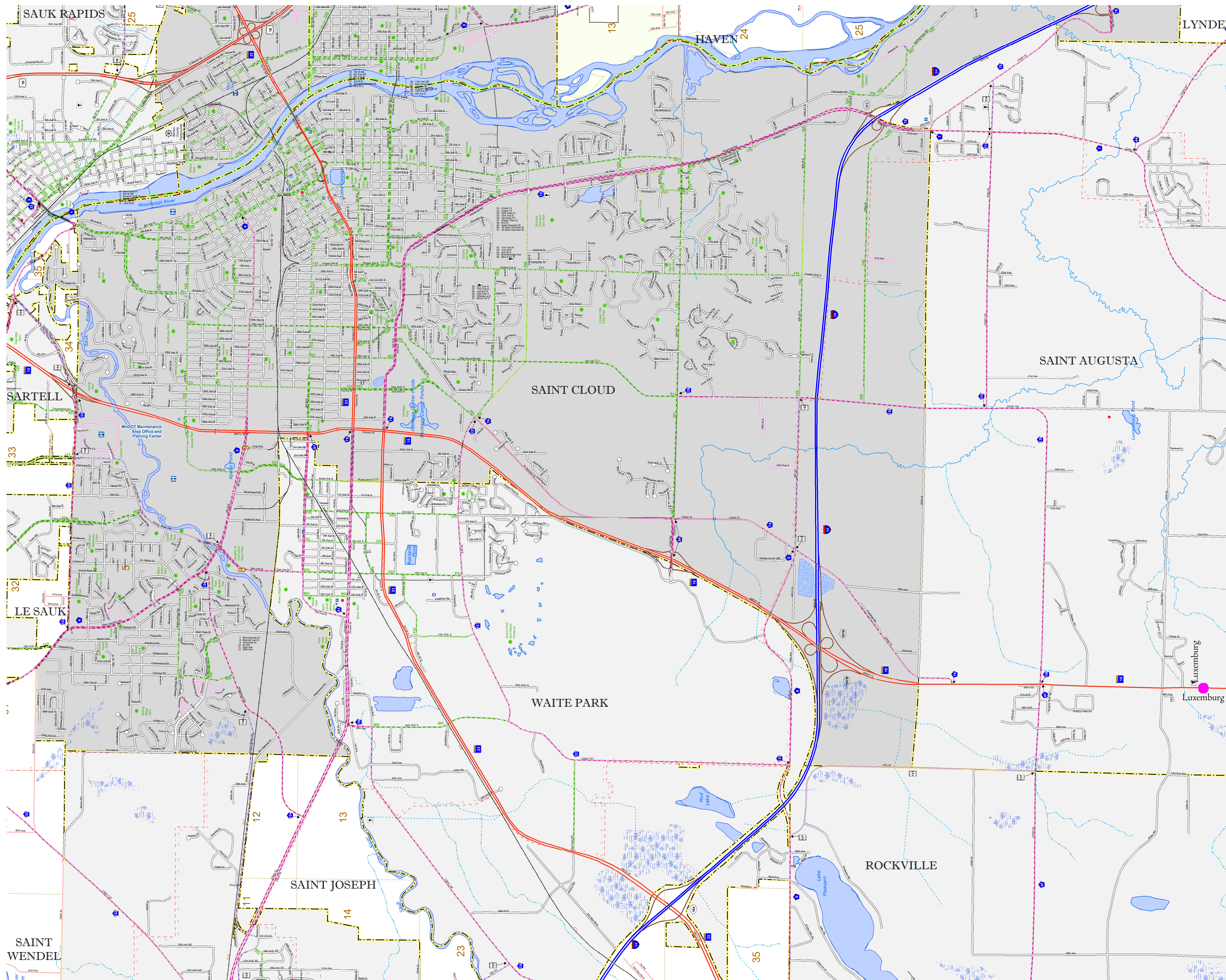
1 in = 2,000 ft

2019

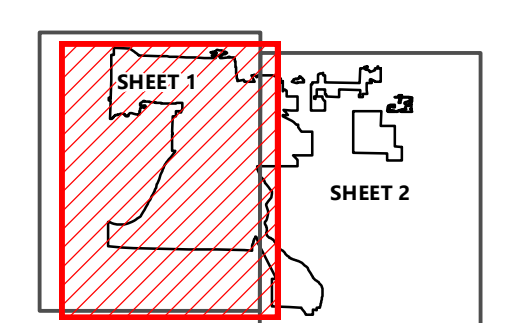
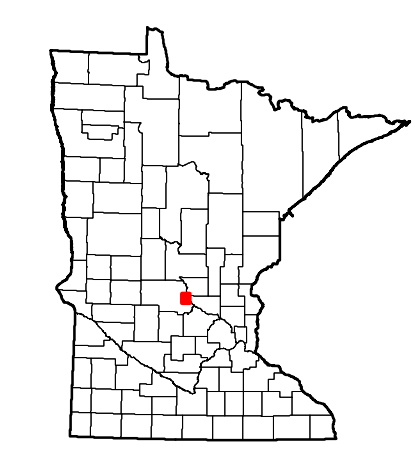
Projection:
Transverse Mercator
NAD 1986
UTM Zone 15



North American Datum
of 1986



ROAD AND ROADWAY FEATURES		PUBLIC SERVICE FEATURES	
INTERSTATE		MINDOT OFFICE	
US HIGHWAY		MINDOT TRUCK STATION	
MN HIGHWAY		HIGHWAY PATROL DISTRICT OFFICE	
COUNTY STATE AID HIGHWAY		STATE TRAVEL INFORMATION CENTER	
COUNTY ROAD		REST AREA (FULL SERVICE)	
MUNICIPAL STATE AID STREET		REST AREA (VAULT TOILET)	
MUNICIPAL STREET		WAYSIDE (VAULT OR PIT TOILET)	
PRIVATE STREET/ROAD		LOCAL PARK	
TOWNSHIP ROAD		PUBLIC ACCESS POINT	
UNORGANIZED TERRITORY ROAD		FAIRGROUNDS	
RAMP OR CONNECTOR		PORT OF ENTRY	
INTERSTATE EXIT		PARK AND RIDE LOT	
GREAT RIVER ROAD		MN STATE COLLEGE AND UNIVERSITY SYSTEM (MNSCU)	
OTHER ROADS		UNIVERSITY OF MN SYSTEM	
FRONTAGE		CULTURAL FEATURES	
INDIAN SERVICE		STATE HISTORICAL MARKER	
NATIONAL PARK		HISTORIC DISTRICT	
NATIONAL MONUMENT		HISTORIC SITE	
NATIONAL WILDLIFE		MONUMENT	
STATE FOREST		BOUNDARY FEATURES	
STATE GAME		TRIBAL LAND	
AVIATION FEATURES		COUNTY	
COMMERCIAL AIRPORT		MUNICIPALITY	
GENERAL AIRPORT		ADJACENT MUNICIPALITY	
AIRSTRIP		FEDERAL ADJUSTED URBAN AREA (2014)	
SEAPLANE		MILITARY	
AIRPORT RUNWAY		VOYAGEURS NATIONAL PARK	
RAILROAD		BOUNDARY WATERS CANOE AREA WILDERNESS	
EMPIRE BUILDER STATION (AMTRAK)		STATE PARK	
NORTHSTAR STATION (COMMUTER)		REGIONAL PARK	
LIGHT RAIL		NATIONAL FOREST	
BLUE LINE		NATIONAL AND STATE FOREST	
GREEN LINE		STATE FOREST	
LONG BRIDGE (50' OR GREATER SPAN)		NATIONAL TRAIL	
MAJOR BRIDGE (25' TO 50' SPAN)		WILDLIFE REFUGUE AREA	
MINOR BRIDGE (8' TO 25' SPAN)		WILDLIFE MANAGEMENT AREA	
DAM		HYDROLOGIC FEATURES	
LOCK AND DAM		RIVER OR STREAM (PERMANENT)	
STATE CAPITOL		LAKE, POND OR RESERVOIR	
FEDERAL COURTHOUSE		STREAM (INTERMITTENT)	
COUNTY COURTHOUSE		DRAINAGE DITCH	
ARMORY		WETLAND	
CITY CENTERS		ISLAND OR LAND	
TRIBAL GOVERNMENT CENTER		REGIONAL WATERSHED	
CITY CENTER			
LOCALLY INCORPORATED PLACE			
UNINCORPORATED COMMUNITY			



To request information from this document in an alternative format, call 651-366-4718 or 1-800-657-3774 (Greater Minnesota); 711 or 1-800-627-3529 (Minnesota Relay). You may also send an e-mail to ADArequest.dot@state.mn.us. (Please request at least one week in advance.)

Population (U.S. Census 2010): 65,842