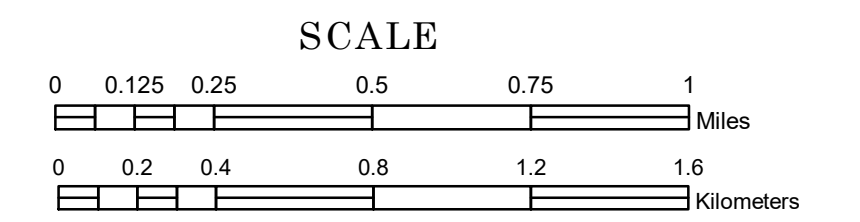


MUNICIPALITY OF SAINT FRANCIS

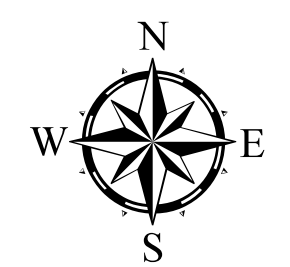
PREPARED BY THE
MINNESOTA DEPARTMENT OF TRANSPORTATION
OFFICE OF TRANSPORTATION SYSTEM MANAGEMENT

IN COOPERATION WITH
U.S. DEPARTMENT OF TRANSPORTATION
FEDERAL HIGHWAY ADMINISTRATION



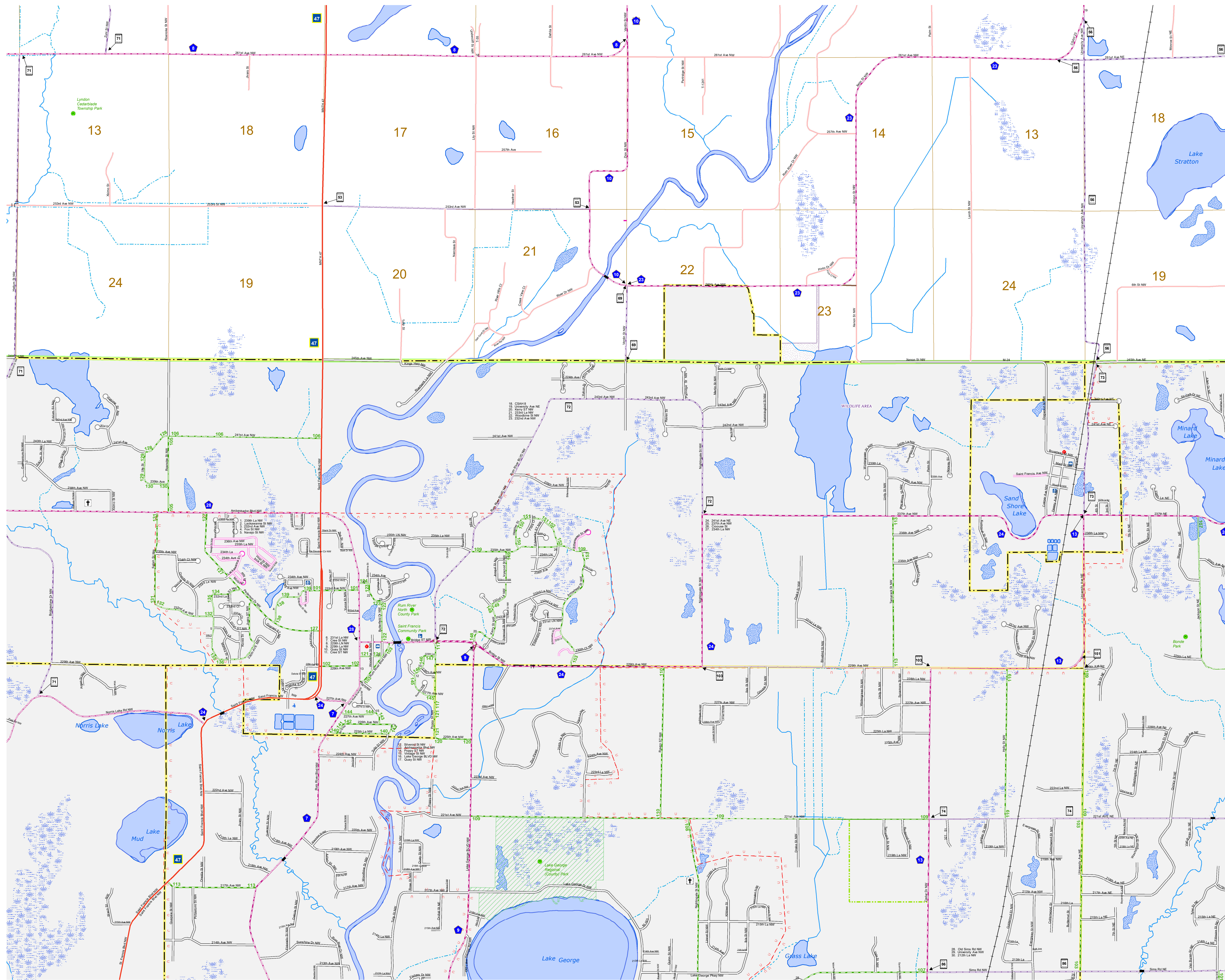
1 in = 1,600 ft

2019

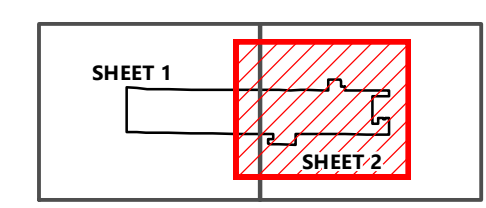
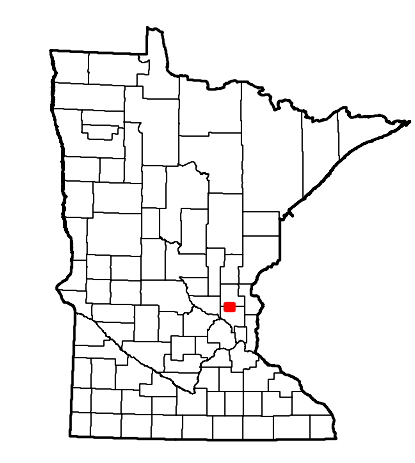


North American Datum
of 1986

Projection:
Transverse Mercator
NAD 1986
UTM Zone 15



ROAD AND ROADWAY FEATURES	PUBLIC SERVICE FEATURES
INTERSTATE	MINDOT OFFICE
US HIGHWAY	MINDOT TRUCK STATION
MN HIGHWAY	HIGHWAY PATROL DISTRICT OFFICE
COUNTY STATE AID HIGHWAY	STATE TRAVEL INFORMATION CENTER
COUNTY ROAD	REST AREA (FULL SERVICE)
MUNICIPAL STATE AID STREET	REST AREA (VAULT TOILET)
MUNICIPAL STREET	WAYSIDE (VAULT OR PIT TOILET)
PRIVATE STREET/ROAD	LOCAL PARK
TOWNSHIP ROAD	PUBLIC ACCESS POINT
UNORGANIZED TERRITORY ROAD	FAIRGROUNDS
RAMP OR CONNECTOR	PORT OF ENTRY
INTERSTATE EXIT	PARK AND RIDE LOT
GREAT RIVER ROAD	MN STATE COLLEGE AND UNIVERSITY SYSTEM (MNSCU)
UNIVERSITY OF MN SYSTEM	
OTHER ROADS	
FRONTAGE	
INDIAN SERVICE	
NATIONAL PARK	
MONUMENT	
STATE FOREST	
MILITARY	
NATIONAL FOREST	
NATIONAL WILDLIFE	
STATE GAME	
AVIATION FEATURES	CULTURAL FEATURES
COMMERCIAL AIRPORT	STATE HISTORICAL MARKER
GENERAL AIRPORT	HISTORIC DISTRICT
AIRSTRIP	HISTORIC SITE
SEAPLANE	MONUMENT
AIRPORT RUNWAY	BOUNDARY FEATURES
RAILROAD AND RAILWAY FEATURES	TRIBAL LAND
EMPIRE BUILDER STATION (AMTRAK)	COUNTY
NORTHSTAR STATION (COMMUTER)	MUNICIPALITY
LIGHT RAIL	ADJACENT MUNICIPALITY
BLUE LINE	FEDERAL ADJUSTED URBAN AREA (2014)
GREEN LINE	MILITARY
INFRASTRUCTURE FEATURES	VOYAGEURS NATIONAL PARK
LEADS BRIDGE (50' OR GREATER SPAN)	BOUNDARY WATERS CANOE AREA WILDERNESS
MAJOR BRIDGE (25' TO 300' SPAN)	STATE PARK
MINOR BRIDGE (8' TO 25' SPAN)	REGIONAL PARK
DAM	NATIONAL FOREST
LOCK AND DAM	NATIONAL AND STATE FOREST
STATE CAPITOL	STATE FOREST
FEDERAL COURTHOUSE	NATIONAL TRAIL
COUNTY COURTHOUSE	WILDLIFE REFUGUE AREA
ARMORY	WILDLIFE MANAGEMENT AREA
CITY CENTERS	HYDROLOGIC FEATURES
TRIBAL GOVERNMENT CENTER	RIVER OR STREAM (PERMANENT)
CITY CENTER	LAKE, POND OR RESERVOIR
LOCALLY INCORPORATED PLACE	STREAM (INTERMITTENT)
UNINCORPORATED COMMUNITY	DRAINAGE DITCH
	WETLAND
	ISLAND OR LAND
	REGIONAL WATERSHED



To request information from this document in an alternative format, call 651-366-4718 or 1-800-657-3774 (Greater Minnesota); 711 or 1-800-627-3529 (Minnesota Relay). You may also send an e-mail to ADArequest.dot@state.mn.us. (Please request at least one week in advance.)

Population (U.S. Census 2010): 7,218