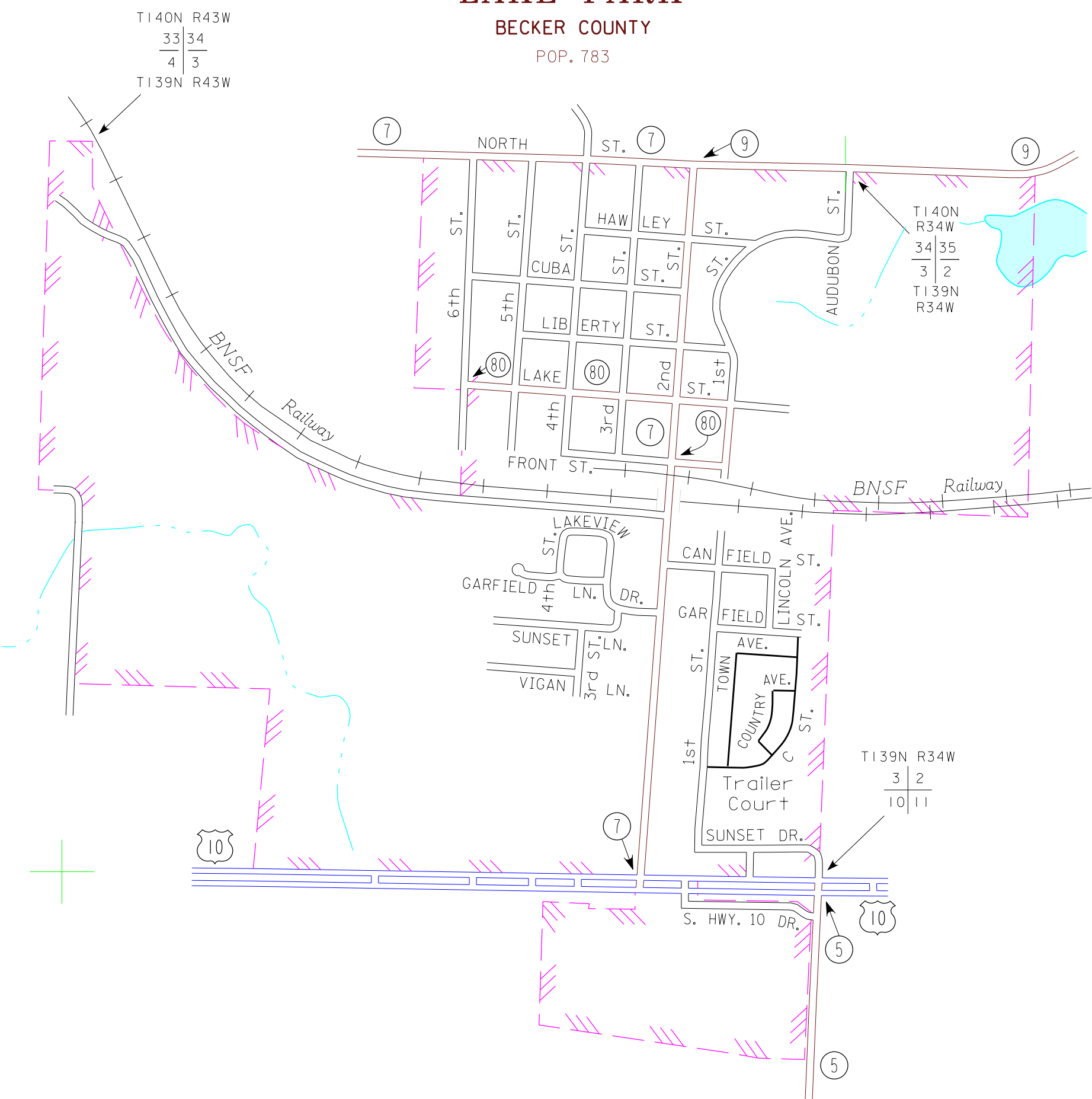


LAKE PARK

BECKER COUNTY

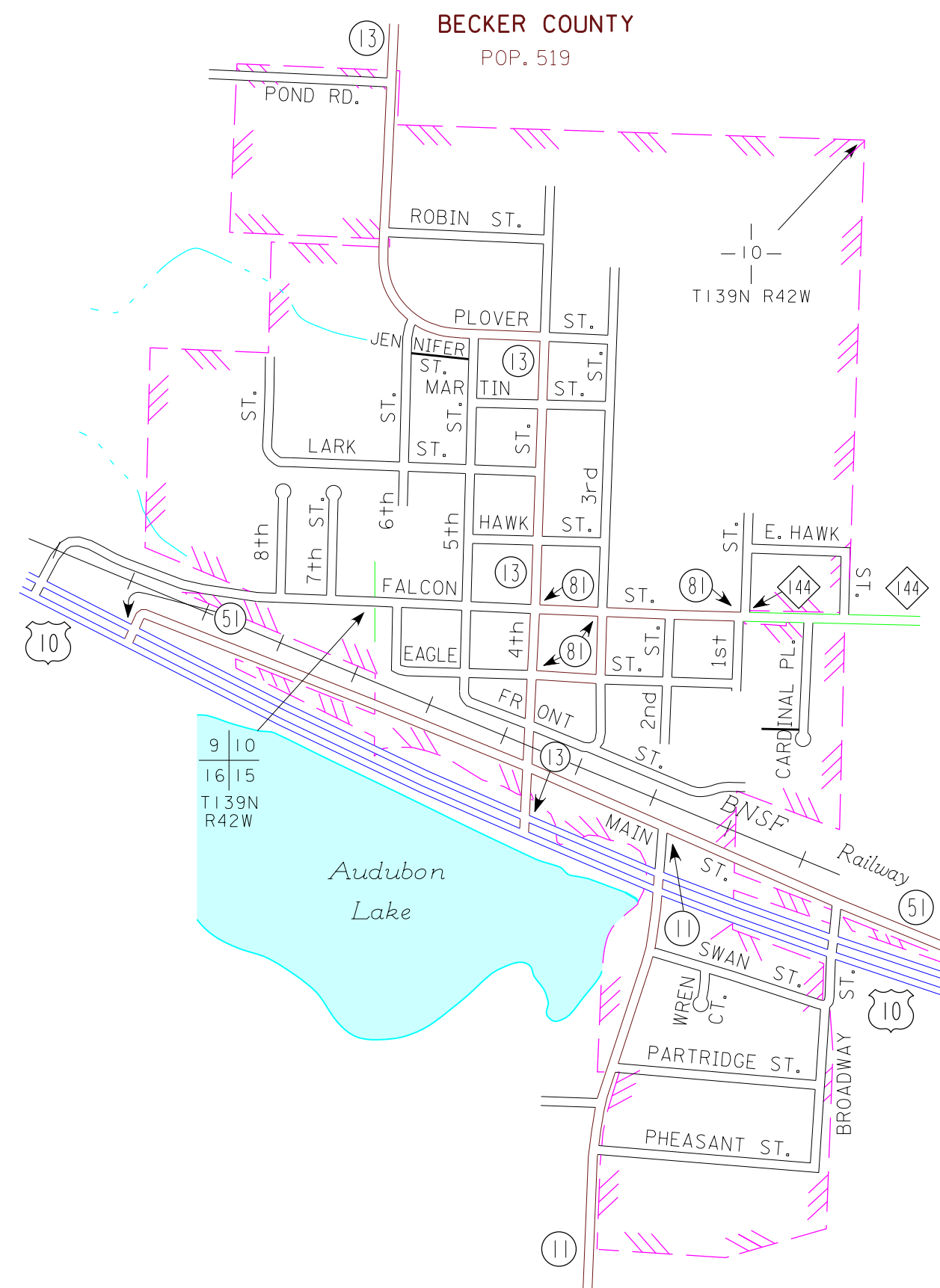
POP. 783



AUDUBON

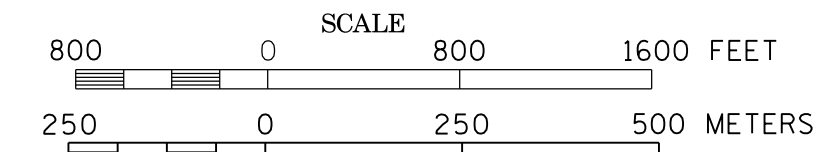
BECKER COUNTY

POP. 519



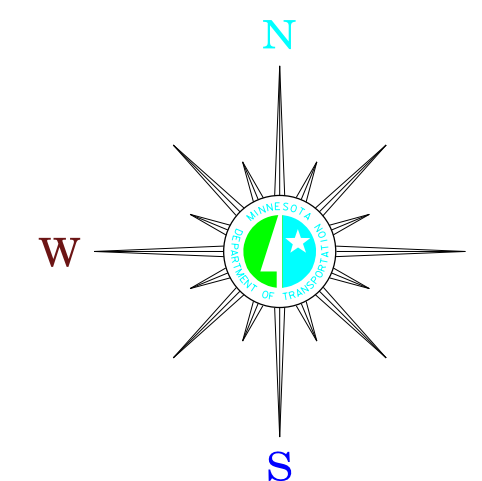
MUNICIPALITIES OF
BECKER COUNTY

PREPARED BY THE
MINNESOTA DEPARTMENT OF TRANSPORTATION
OFFICE OF TRANSPORTATION SYSTEM MANAGEMENT
IN COOPERATION WITH
U.S. DEPARTMENT OF TRANSPORTATION
FEDERAL HIGHWAY ADMINISTRATION



2015

BASIC DATA - 2013



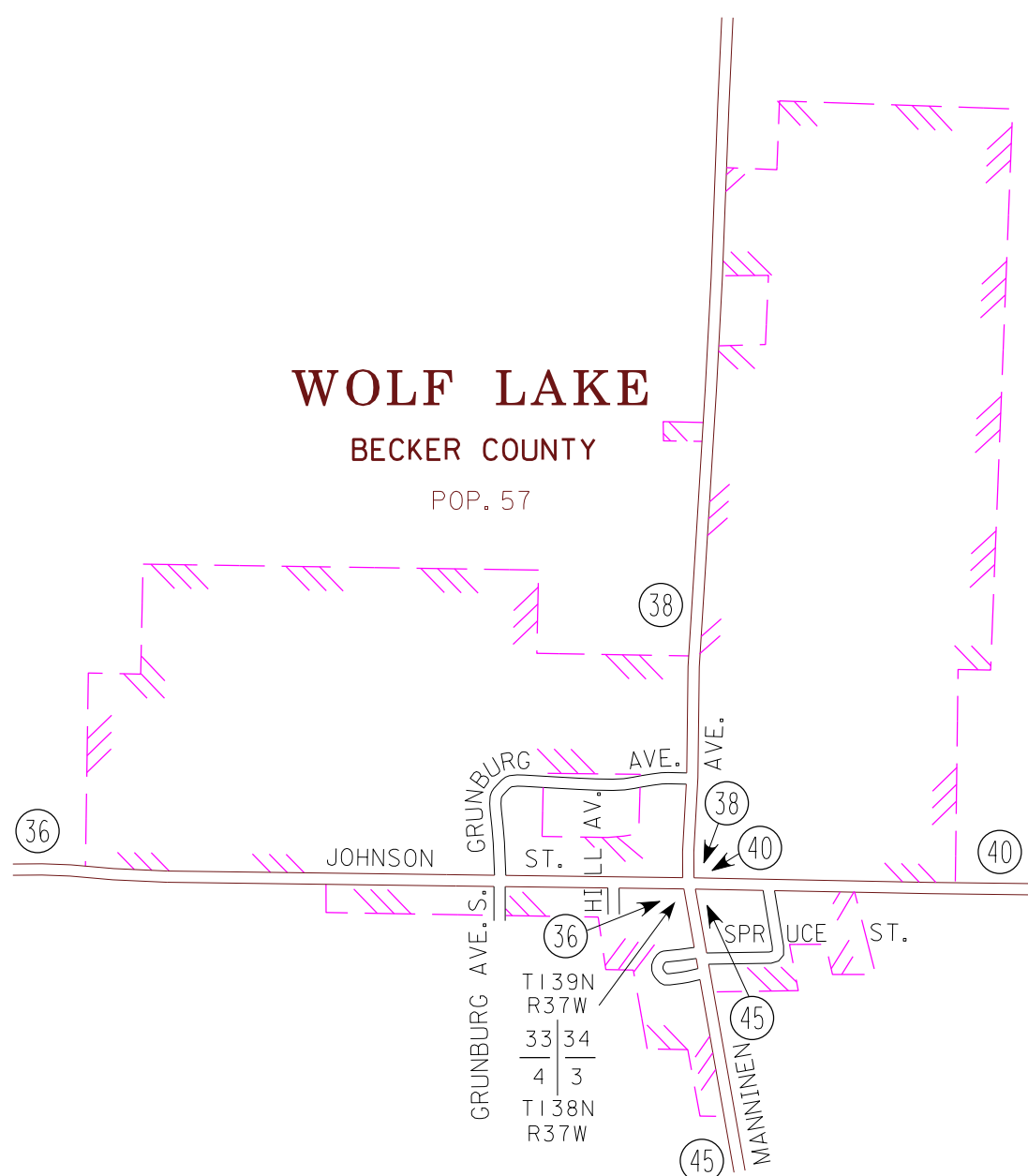
LEGEND

- INTERSTATE TRUNK HIGHWAY..... (I-35)
- U.S. TRUNK HIGHWAY..... (10)
- STATE TRUNK HIGHWAY..... (55)
- COUNTY STATE AID HIGHWAY..... (23)
- COUNTY ROAD..... (13)
- PUBLIC ROAD.....
- PRIVATE ROAD.....
- CORPORATE LIMITS.....

WOLF LAKE

BECKER COUNTY

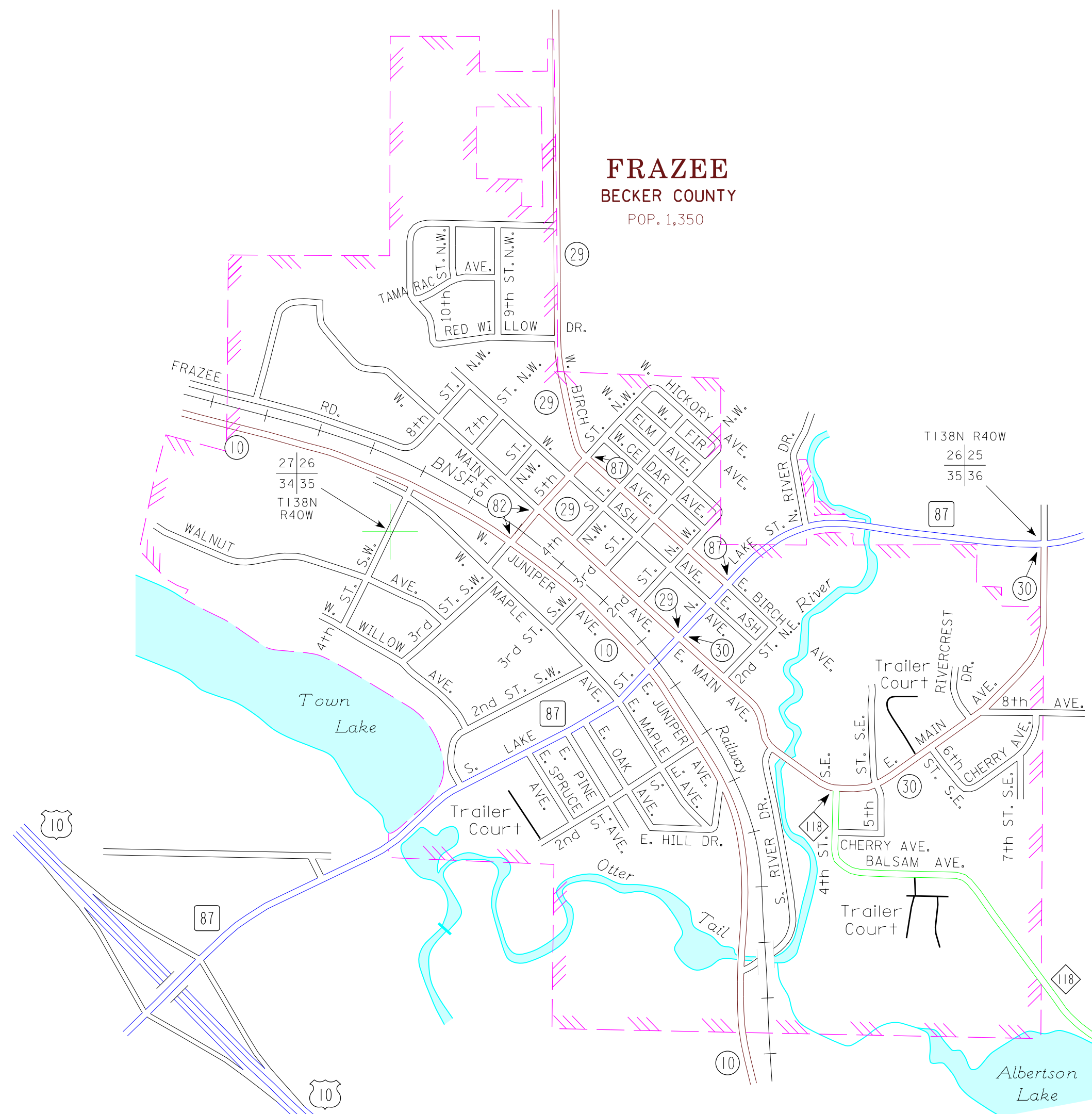
POP. 57



FRAZEE

BECKER COUNTY

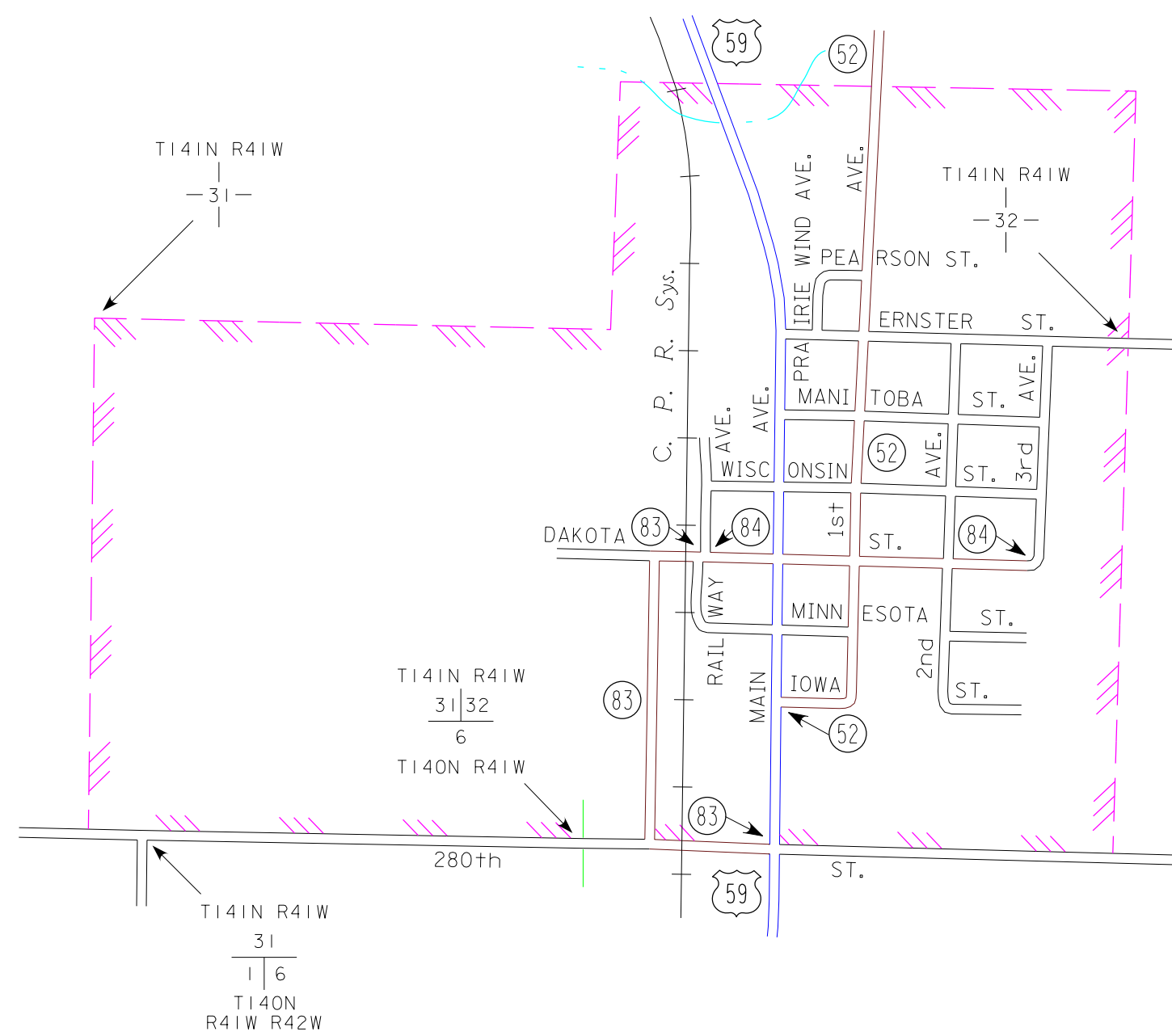
POP. 1,350



CALLAWAY

BECKER COUNTY

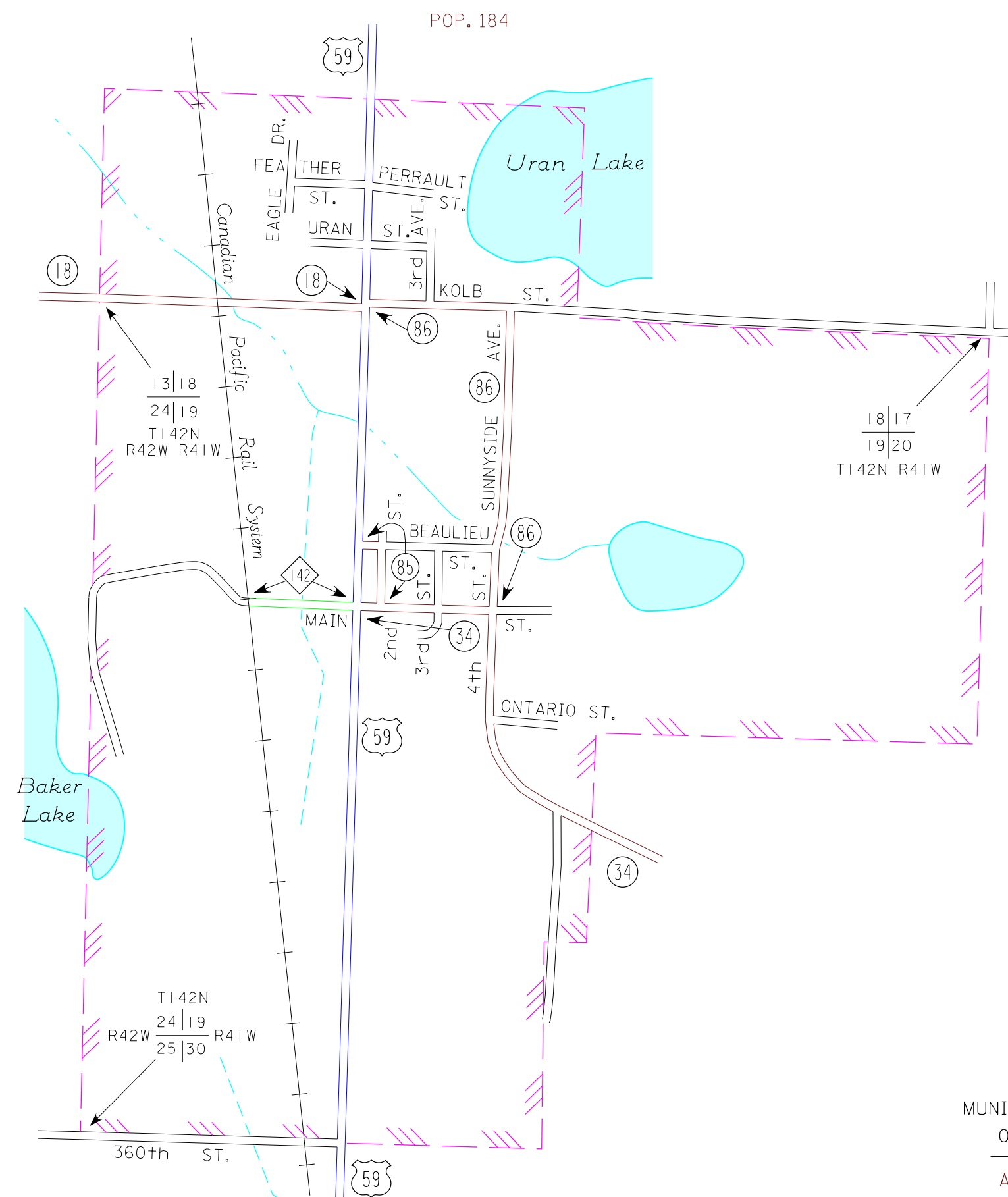
POP. 234



OGEMA

BECKER COUNTY

POP. 184



MUNICIPALITIES SHOWN
ON THIS SHEET

- AUDUBON
- CALLAWAY
- FRAZEE
- LAKE PARK
- OGEMA
- WOLF LAKE

To request information from this document in an alternative format, call 651-366-4718 or 1-800-657-3774 (Greater Minnesota); 711 or 1-800-627-3529 (Minnesota Relay). You may also send an e-mail to ADRequest@state.mn.us. (Please request at least one week in advance).

NOTE: 2010 U.S. CENSUS FIGURES SHOWN FOR ALL MUNICIPALITIES UNLESS OTHERWISE STATED.