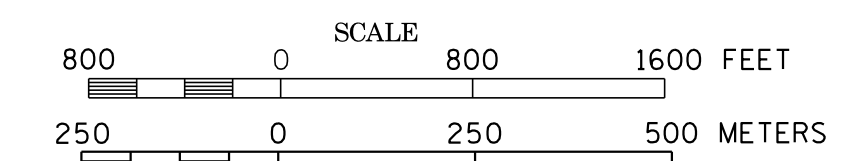
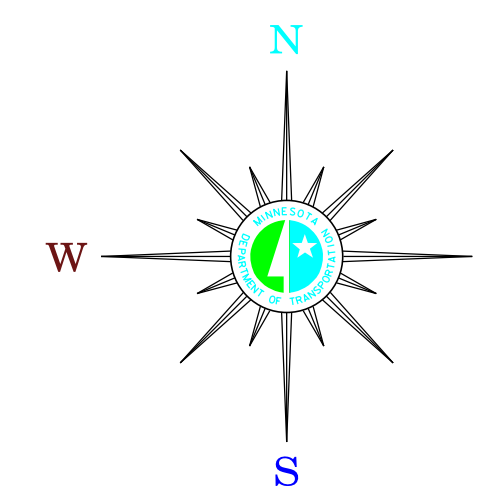


MUNICIPALITIES OF
CHISAGO CO.

PREPARED BY THE
MINNESOTA DEPARTMENT OF TRANSPORTATION
OFFICE OF TRANSPORTATION SYSTEM MANAGEMENT
IN COOPERATION WITH
U.S. DEPARTMENT OF TRANSPORTATION
FEDERAL HIGHWAY ADMINISTRATION



2015
BASIC DATA - 2013

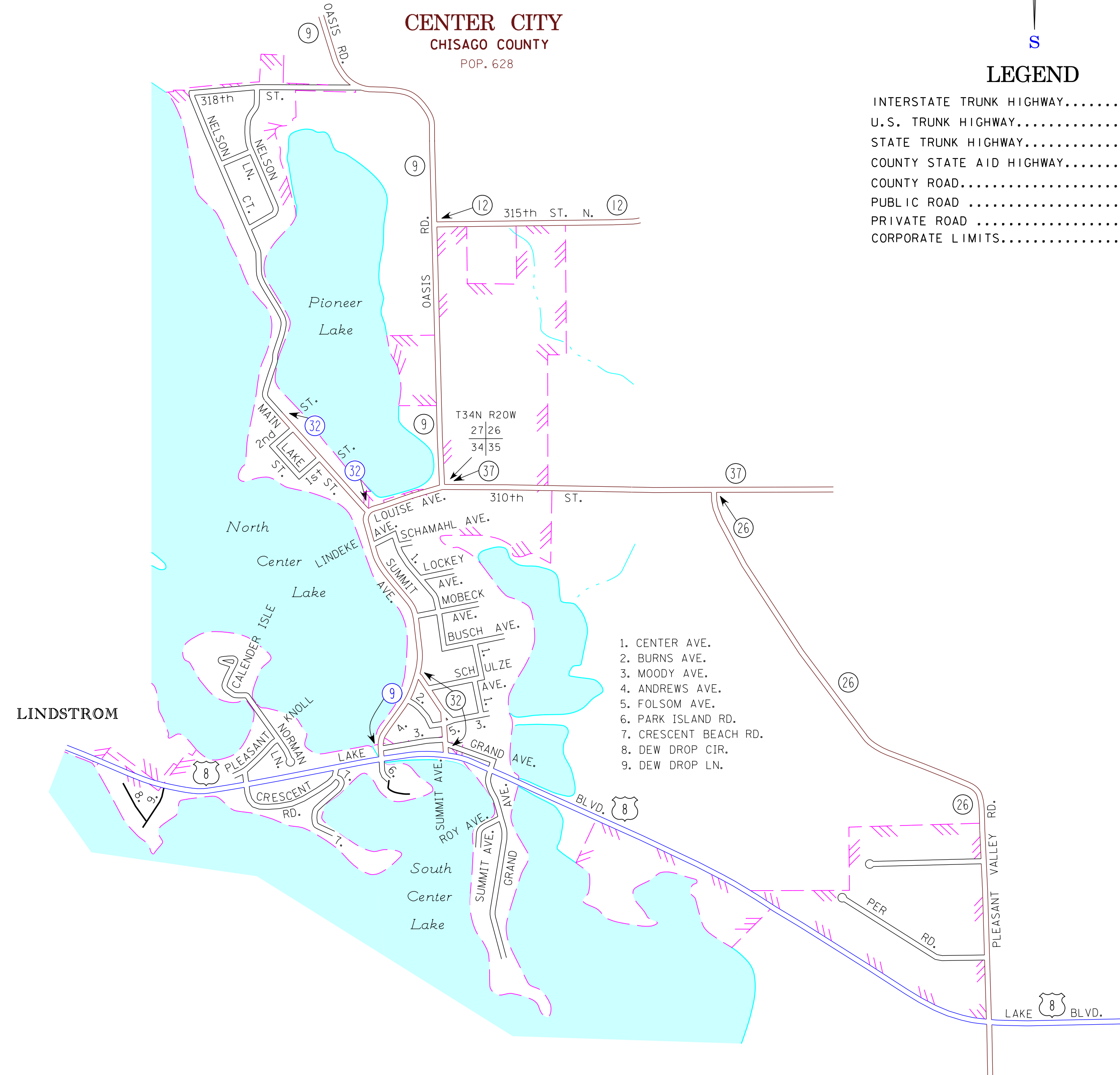
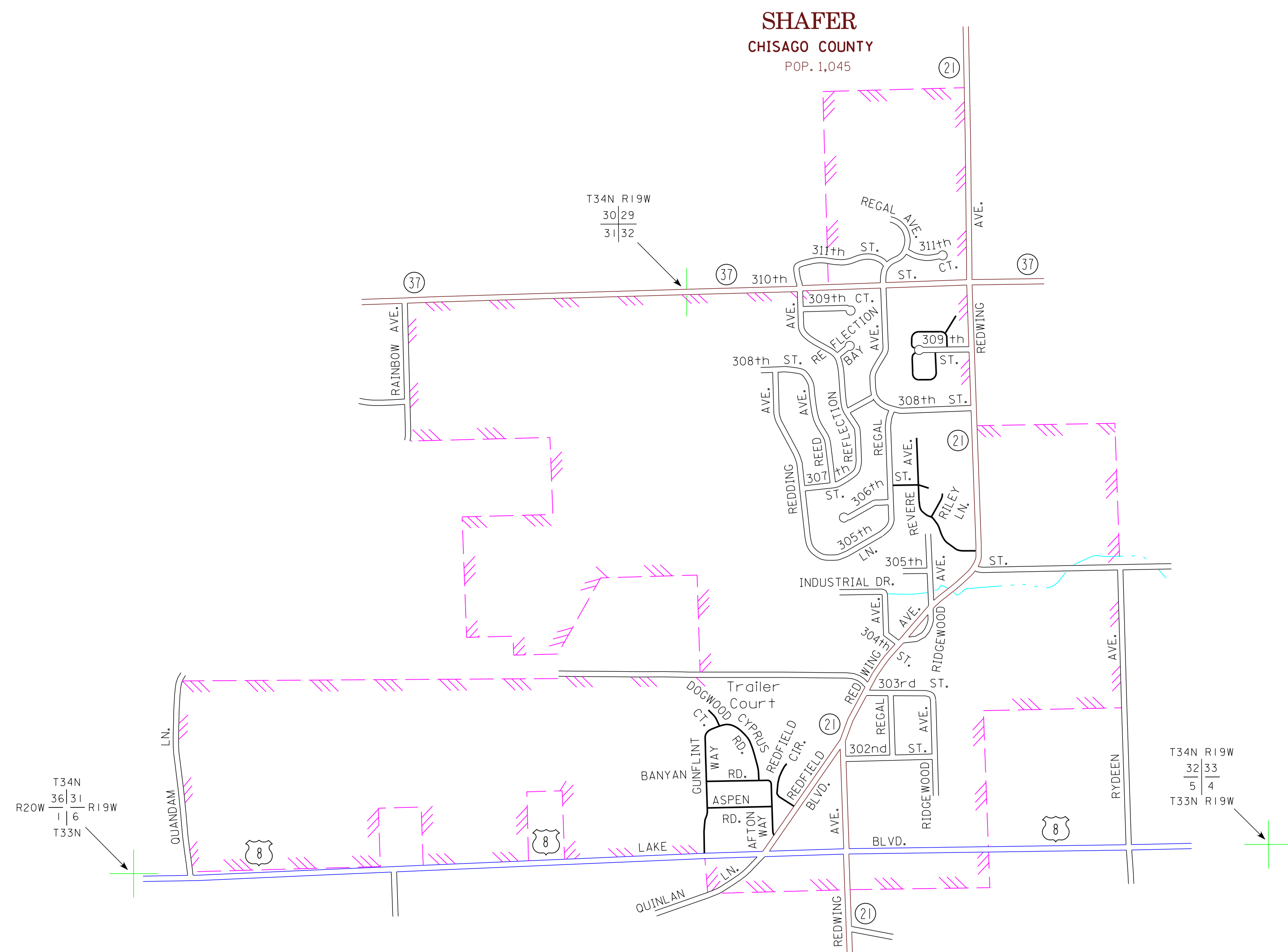


LEGEND

- INTERSTATE TRUNK HIGHWAY..... (I-35)
- U.S. TRUNK HIGHWAY..... (10)
- STATE TRUNK HIGHWAY..... (55)
- COUNTY STATE AID HIGHWAY..... (23)
- COUNTY ROAD..... (15)
- PUBLIC ROAD.....
- PRIVATE ROAD.....
- CORPORATE LIMITS.....

SHAFER
CHISAGO COUNTY
POP. 1,045

CENTER CITY
CHISAGO COUNTY
POP. 628



1. CENTER AVE.
2. BURNS AVE.
3. MOODY AVE.
4. ANDREWS AVE.
5. FOLSOM AVE.
6. PARK ISLAND RD.
7. CRESCENT BEACH RD.
8. DEW DROP CIR.
9. DEW DROP LN.

MUNICIPALITIES SHOWN
ON THIS SHEET
CENTER CITY
SHAFER

To request information from this document in an alternative format, call 651-366-4718 or 1-800-657-3774 (Greater Minnesota); 711 or 1-800-627-3529 (Minnesota Relay). You may also send an e-mail to ADRequest.dot@state.mn.us. (Please request at least one week in advance).

NOTE: 2010 U.S. CENSUS FIGURES SHOWN FOR ALL MUNICIPALITIES UNLESS OTHERWISE STATED.