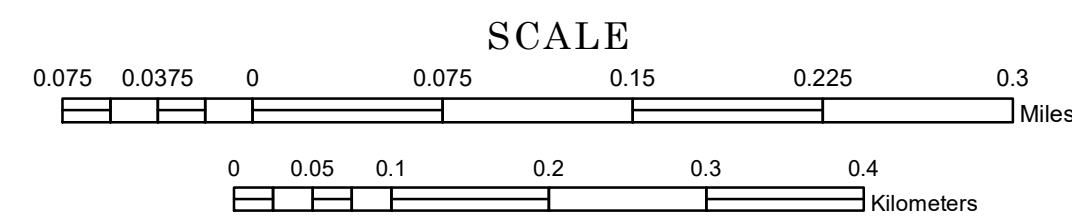


# MUNICIPALITY OF MAPLE PLAIN

PREPARED BY THE  
MINNESOTA DEPARTMENT OF TRANSPORTATION  
OFFICE OF TRANSPORTATION SYSTEM MANAGEMENT

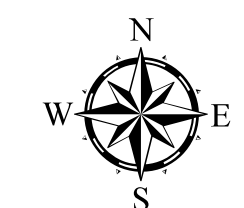
IN COOPERATION WITH  
U.S. DEPARTMENT OF TRANSPORTATION  
FEDERAL HIGHWAY ADMINISTRATION



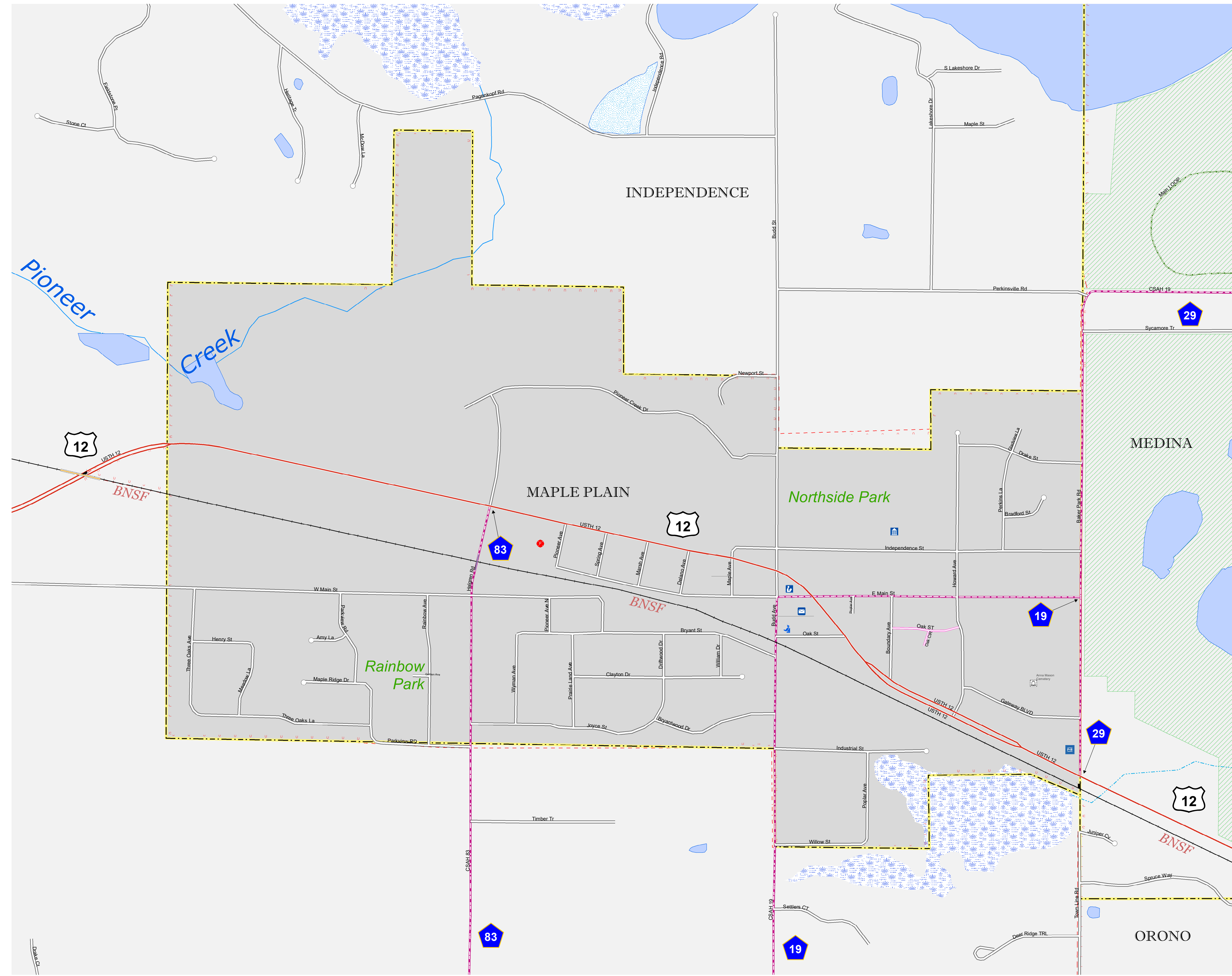
1 in = 400 ft

2022

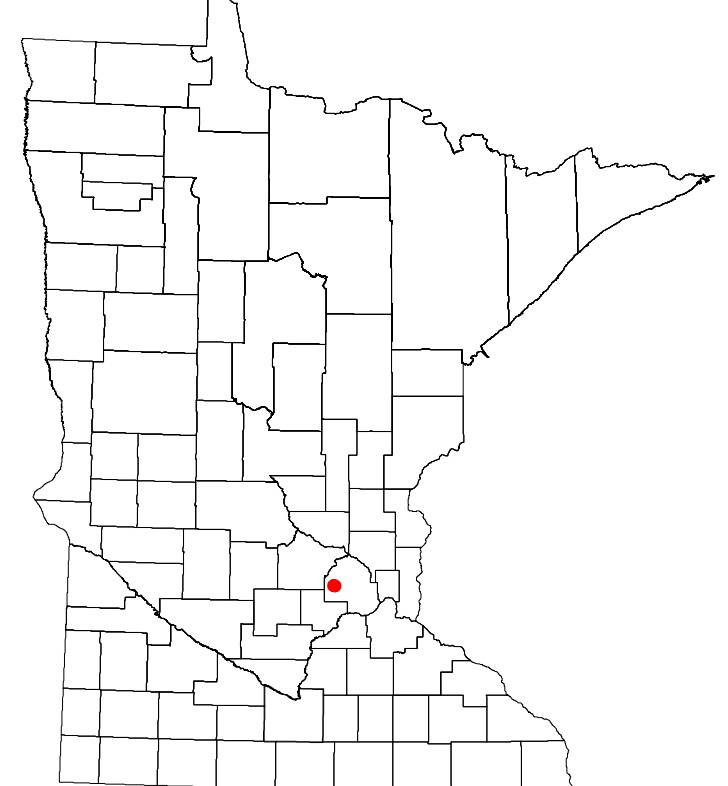
Projection:  
Transverse Mercator  
NAD 1986  
UTM Zone 15



North American Datum  
of 1986



ROAD AND ROADWAY FEATURES	PUBLIC SERVICE FEATURES
INTERSTATE	MINOT OFFICE
US HIGHWAY	MINOT TRUCK STATION
STATE HIGHWAY	HIGHWAY PATROL DISTRICT OFFICE
COUNTY STATE AID HIGHWAY	STATE TRAVEL INFORMATION CENTER
COUNTY ROAD	REST AREA (Full Service)
MUNICIPAL STREET	REST AREA (Quick Turn)
MUNICIPAL STATE AID STREET	WAYSIDE (Only on Pk Trk + I)
TOWNSHIP ROAD	PUBLIC ACCESS POINT
UNORGANIZED TERRITORY ROAD	LOCAL PARK
RAMP OR CONNECTOR	FARMS/BOULDS
INTERSTATE EXIT	PORT OF ENTRY
GREAT RIVER ROAD	PARK AND RIDE LOT
OTHER ROADS	PUBLIC UNIVERSITY COLLEGE
FARMROAD	PRIVATE UNIVERSITY COLLEGE
INDUS SERVICE	ELEMENTARY SCHOOL
MILITARY	MIDDLE SCHOOL
	HIGH SCHOOL
RAILROAD AND RAILWAY FEATURES	AVIATION FEATURES
EMPIRE BUILDER STATION (ARTIKS)	COMMERCIAL AIRPORT
NORTHBSTAR STATION (COMMUTERS)	GENERAL AIRPORT
LIGHT RAIL	AIRSTRIP
BLUE LINE STATION	SEAPLANE
GREEN LINE STATION	AIRPORT RUNWAY
INFRASTRUCTURE FEATURES	CULTURAL FEATURES
LONG BRIDGE (100' OR GREATER SPAN)	STATE HISTORIC MARKER
MAJOR BRIDGE (20' TO 100' SPAN)	HISTORIC DISTRICT
MINOR BRIDGE (2' TO 20' SPAN)	HISTORIC SITE
ROAD TUNNEL (100' OR GREATER SPAN)	MONUMENT
RAILROAD BRIDGE (100' OR GREATER SPAN)	CEMETERY
RAILROAD BRIDGE (LESSER 100' SPAN)	
SKYWAY	BOUNDARY FEATURES
PEDESTRIAN BRIDGE	TRIBAL LAND
PEDESTRIAN TUNNEL	COUNTY
DAM	MUNICIPALITY
LOCK AND DAM	ADJACENT MUNICIPALITY
	FEDERAL ADJUSTED URBAN AREA (2014)
PUBLIC FACILITIES	MILITARY
STATE CAPITOL	STATE PARK
FEDERAL COURTHOUSE	CITY HALL
COUNTY COURTHOUSE	COMMUNITY CENTER
ARMORY	ARENA
CITY HALL	STADIUM
TOWN HALL	POST OFFICE
COMMUNITY CENTER	POLICE STATION
ARENA	FIRE STATION
STADIUM	PUBLIC LIBRARY
POST OFFICE	PUBLIC MUSEUM
POLICE STATION	EVENT CENTER
FIRE STATION	
PUBLIC LIBRARY	
PUBLIC MUSEUM	
EVENT CENTER	



To request information from this document in an alternative format, call 651-366-4718 or 1-800-657-3774 (Greater Minnesota); 711 or 1-800-627-3529 (Minnesota Relay). You may also send an e-mail to ADArequest.dot@state.mn.us. (Please request at least one week in advance.)

LAST EDITED ON 12-29-2022

Population (U.S. Census 2020): 1743