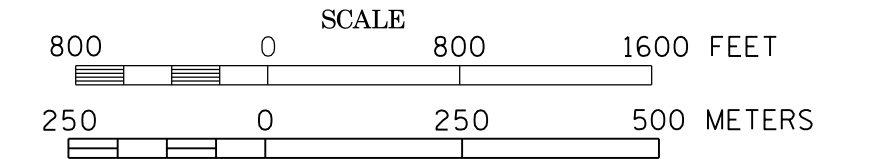


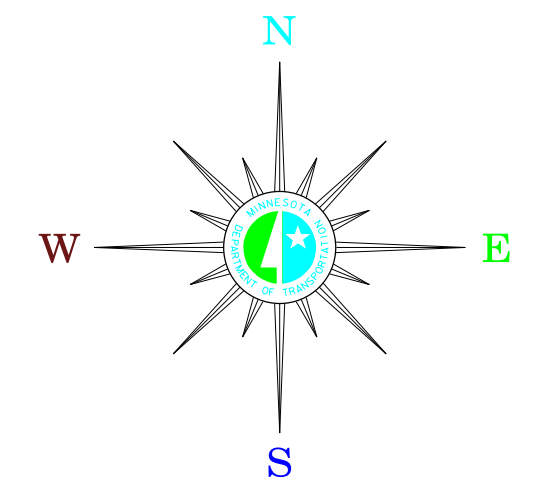
**FINLAYSON**  
PINE COUNTY  
POP. 315

MUNICIPALITIES OF  
**PINE CO.**

PREPARED BY THE  
MINNESOTA DEPARTMENT OF TRANSPORTATION  
OFFICE OF TRANSPORTATION SYSTEM MANAGEMENT  
IN COOPERATION WITH  
U.S. DEPARTMENT OF TRANSPORTATION  
FEDERAL HIGHWAY ADMINISTRATION



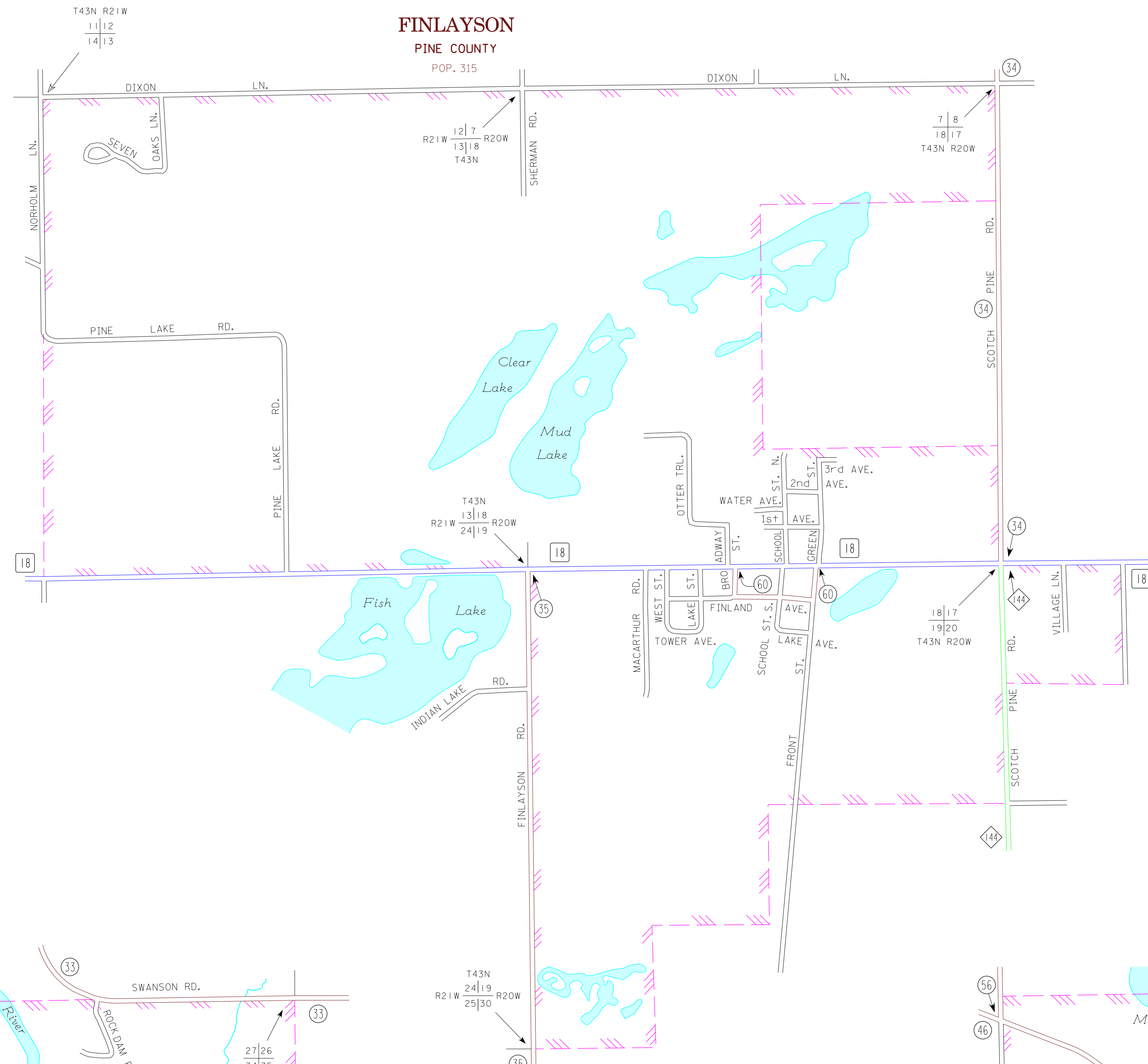
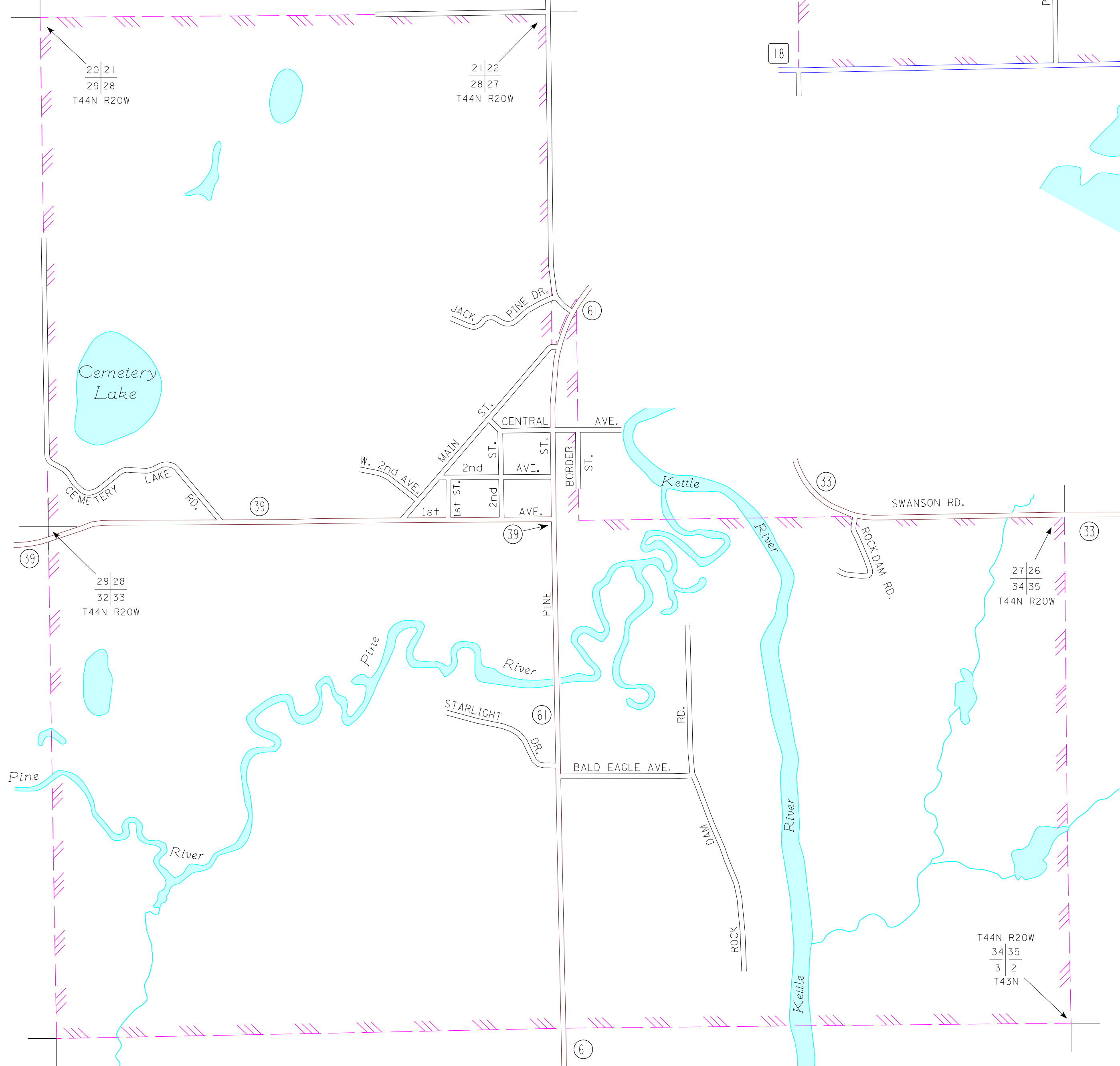
2015  
BASIC DATA - 2013



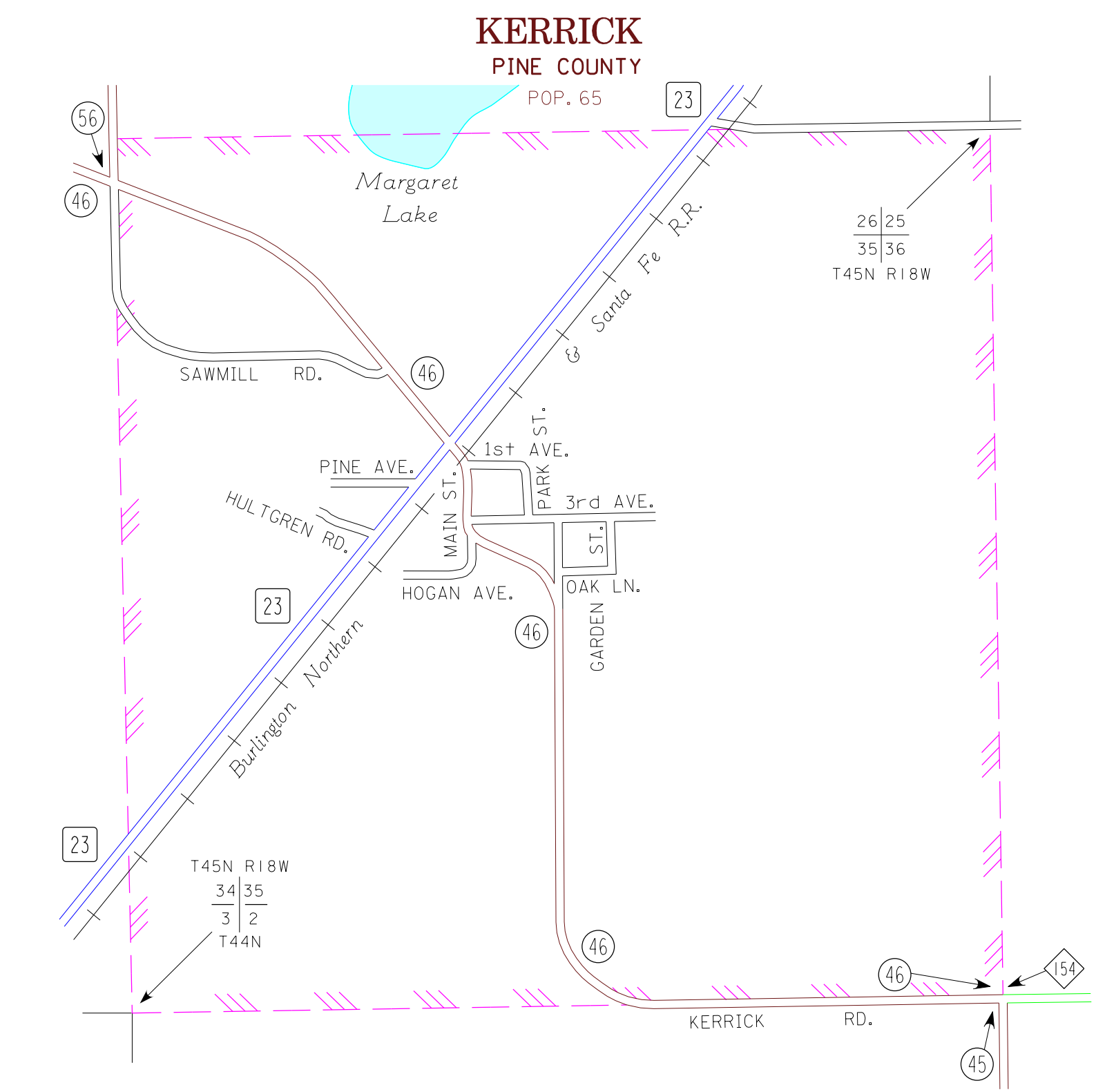
**LEGEND**

- INTERSTATE TRUNK HIGHWAY..... (35)
- U.S. TRUNK HIGHWAY..... (18)
- STATE TRUNK HIGHWAY..... (23)
- COUNTY STATE AID HIGHWAY..... (39)
- COUNTY ROAD..... (61)
- PUBLIC ROAD.....
- PRIVATE ROAD.....
- CORPORATE LIMITS.....

**RUTLEDGE**  
PINE COUNTY  
POP. 229



**KERRICK**  
PINE COUNTY  
POP. 65



MUNICIPALITIES SHOWN  
ON THIS SHEET  
FINLAYSON  
KERRICK  
RUTLEDGE

To request information from this document in an alternative format, call 651-368-4718 or 1-800-657-3774 (Greater Minnesota); 711 or 1-800-627-3529 (Minnesota Relay). You may also send an e-mail to [ADArequest.do@state.mn.us](mailto:ADArequest.do@state.mn.us) (Please request at least one week in advance).

NOTE: 2010 U.S. CENSUS FIGURES SHOWN FOR ALL MUNICIPALITIES UNLESS OTHERWISE STATED.