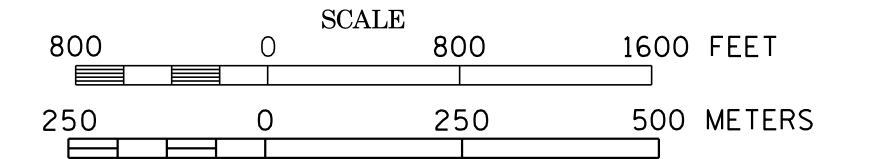
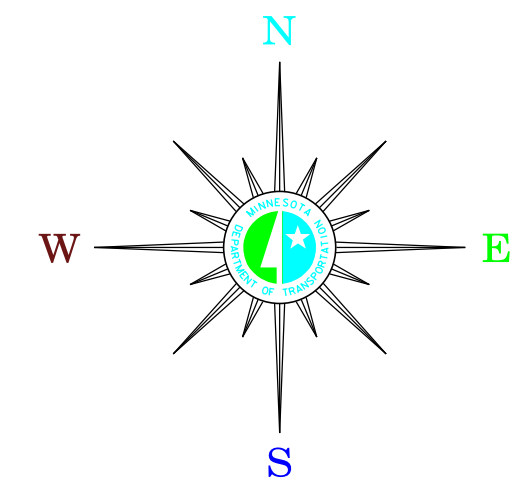


MUNICIPALITIES OF
RICE CO.

PREPARED BY THE
MINNESOTA DEPARTMENT OF TRANSPORTATION
OFFICE OF TRANSPORTATION SYSTEM MANAGEMENT
IN COOPERATION WITH
U.S. DEPARTMENT OF TRANSPORTATION
FEDERAL HIGHWAY ADMINISTRATION



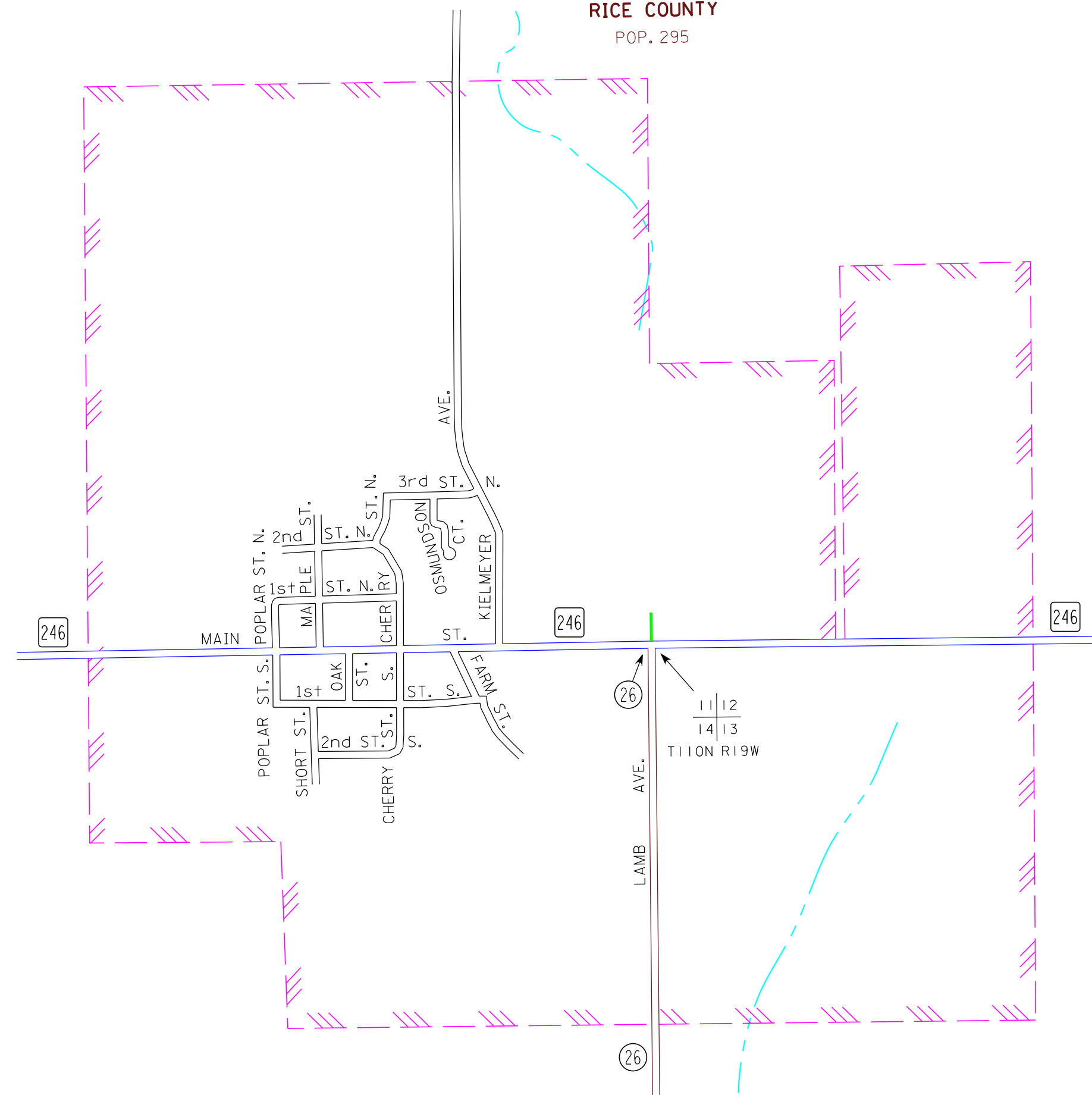
2015
BASIC DATA - 2013



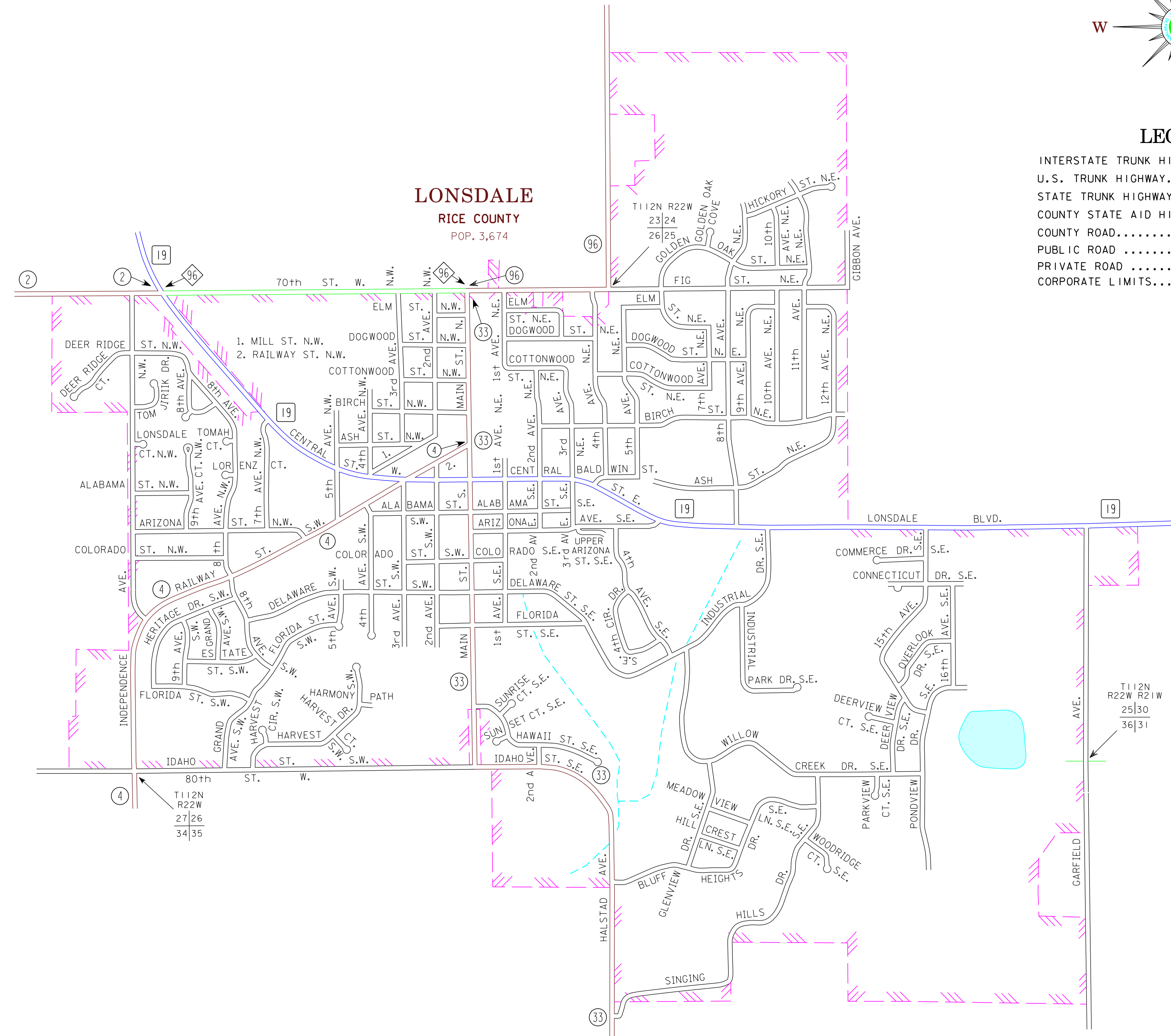
LEGEND

- INTERSTATE TRUNK HIGHWAY..... (I-95)
- U. S. TRUNK HIGHWAY..... (10)
- STATE TRUNK HIGHWAY..... (95)
- COUNTY STATE AID HIGHWAY..... (26)
- COUNTY ROAD..... (4)
- PUBLIC ROAD.....
- PRIVATE ROAD.....
- CORPORATE LIMITS.....

NERSTRAND
RICE COUNTY
POP. 295



LONSDALE
RICE COUNTY
POP. 3,674



MUNICIPALITIES SHOWN
ON THIS SHEET

LONSDALE
NERSTRAND

DENNISON:
See Goodhue Co.
Sheet 2 of 4

To request information from this document in an alternative format, call 651-366-4718 or 1-800-657-3774 (Greater Minnesota) 711 or 1-800-627-3529 (Minnesota Relay). You may also send an e-mail to ADArequest.dot@state.mn.us. (Please request at least one week in advance.)

NOTE: 2010 U.S. CENSUS FIGURES SHOWN FOR ALL MUNICIPALITIES UNLESS OTHERWISE STATED.