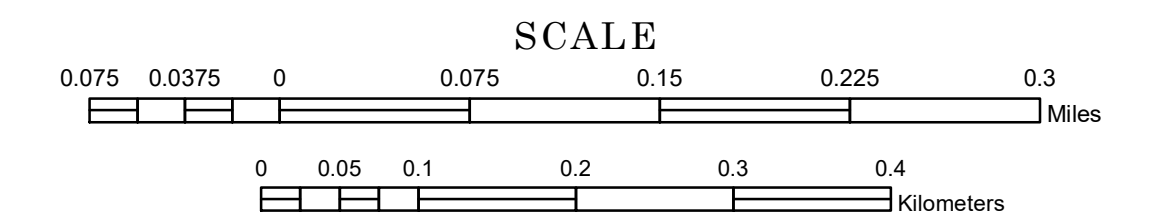


# MUNICIPALITY OF MURDOCK

PREPARED BY THE  
MINNESOTA DEPARTMENT OF TRANSPORTATION  
OFFICE OF TRANSPORTATION SYSTEM MANAGEMENT

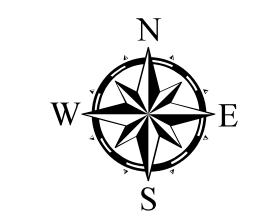
IN COOPERATION WITH  
U.S. DEPARTMENT OF TRANSPORTATION  
FEDERAL HIGHWAY ADMINISTRATION



1 in = 400 ft

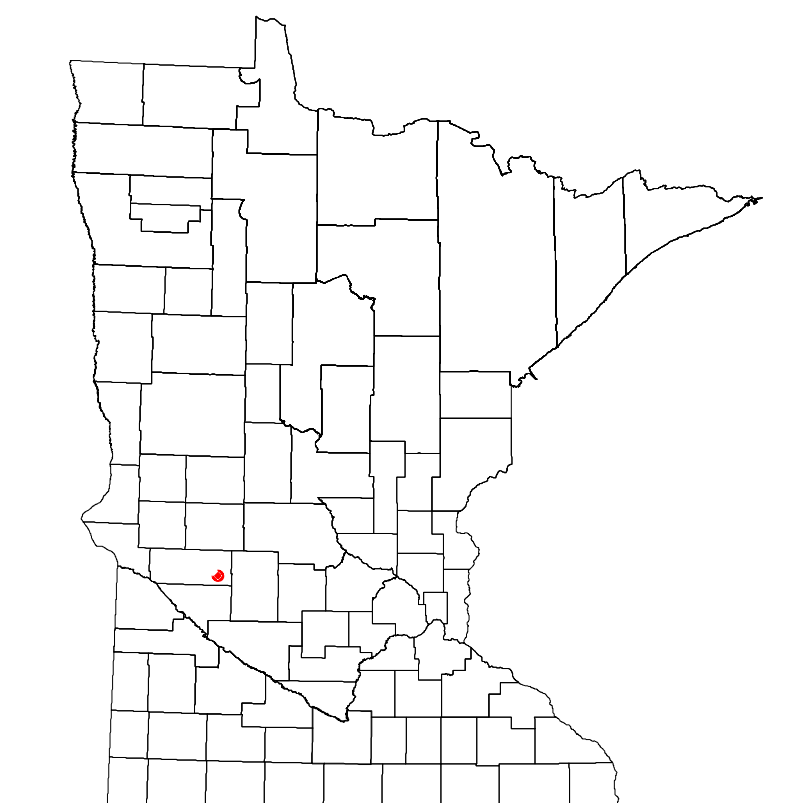
2023

Projection:  
Transverse Mercator  
NAD 1986  
UTM Zone 15

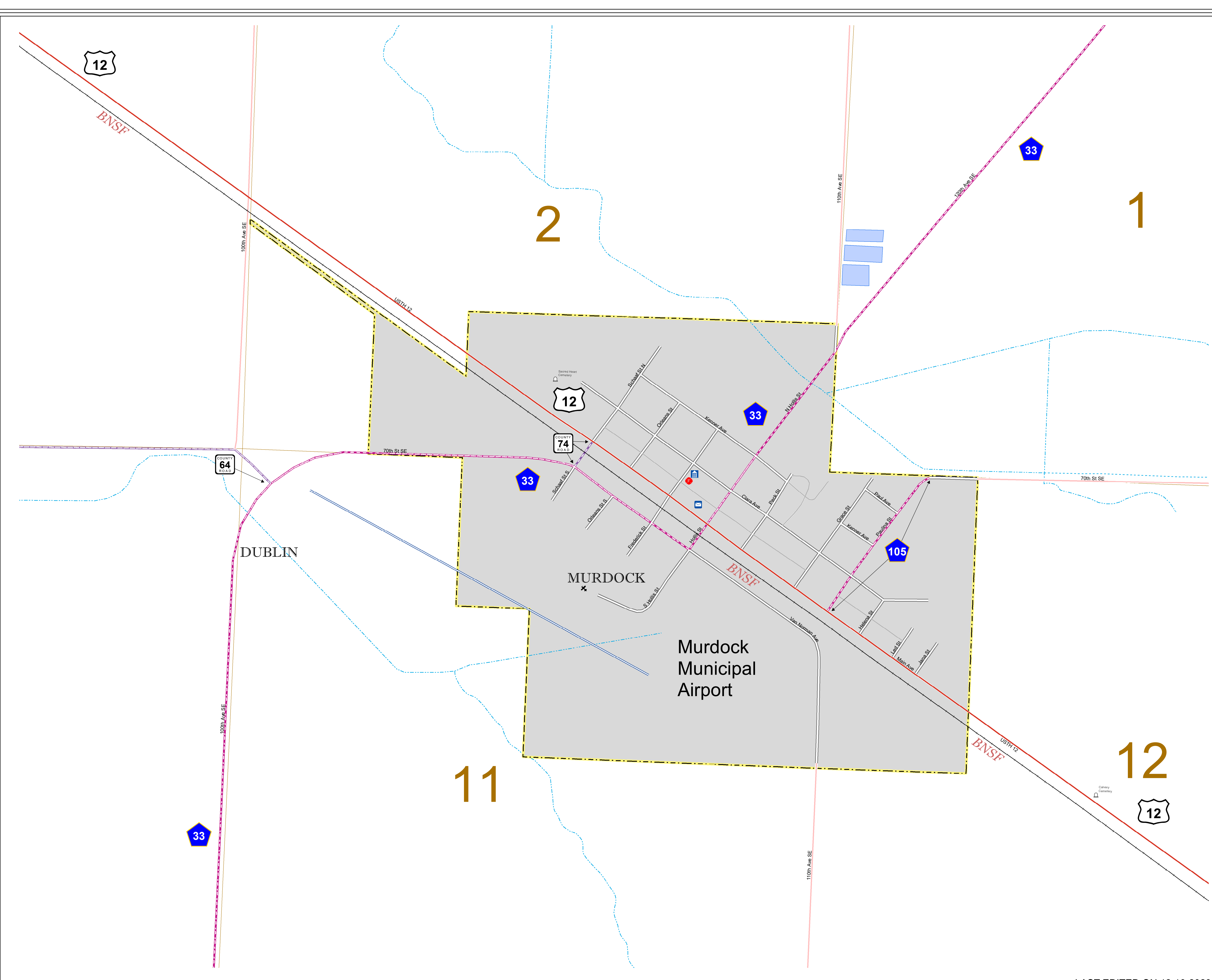


North American Datum  
of 1986

ROAD AND ROADWAY FEATURES	PUBLIC SERVICE FEATURES
INTERSTATE	MINOT OFFICE
US HIGHWAY	MINOT TRUCK STATION
MIN HIGHWAY	HIGHWAY PATROL DISTRICT OFFICE
COUNTY STATE AID HIGHWAY	STATE TRAVEL INFORMATION CENTER
COUNTY ROAD	REST AREA (Full Service)
MUNICIPAL STREET	REST AREA (Quick Turn)
MUNICIPAL STATE AID STREET	WAYSIDE (Only on Pk+Trk+)
PRIVATE STREET/ROAD	PUBLIC ACCESS POINT
TOWNSHIP ROAD	LOCAL PARK
UNORGANIZED TERRITORY ROAD	FARMS/BOUNDS
RAMP OR CONNECTOR	PORT OF ENTRY
INTERSTATE EXIT	PARK AND RIDE LOT
GREAT RIVER ROAD	PUBLIC UNIVERSITY/COLLEGE
OTHER ROADS	PRIVATE UNIVERSITY/COLLEGE
Farm Road	ELEMENTARY SCHOOL
State Park	MIDDLE SCHOOL
National Park	MONUMENT
State Forest	STATE GAME
National Forest	NATIONAL WILDLIFE STATE GAME
Military	HIGH SCHOOL
RAILROAD AND RAILWAY FEATURES	AVIATION FEATURES
RAILROAD	COMMERCIAL AIRPORT
EMPIRE BUILDER STATION (Amtrak)	GENERAL AIRPORT
NORTHWEST STATION (Commuter)	AIRSTRIP
LIGHT RAIL	SEAPLANE
BLUE LINE STATION	AIRPORT RUNWAY
GREEN LINE STATION	
INFRASTRUCTURE FEATURES	CULTURAL FEATURES
LONG BRIDGE (100' or Greater Span)	STATE HISTORIC MARKER
MAJOR BRIDGE (20' to 100' Span)	HISTORIC DISTRICT
MINOR BRIDGE (0' to 20' Span)	HISTORIC SITE
ROAD TUNNEL (100' or Greater Span)	MONUMENT
RAILROAD TUNNEL (100' or Greater Span)	CEMETERY
RAILROAD BRIDGE (Greater than 100' Span)	
SKYWAY	TRIBAL LAND
PEDESTRIAN BRIDGE	COUNTY
PEDESTRIAN TUNNEL	MUNICIPALITY
DAM	ADJACENT MUNICIPALITY
LOCK AND DAM	FEDERAL ADJUSTED URBAN AREA (2014)
PUBLIC FACILITIES	
STATE CAPITOL	MILITARY
FEDERAL COURTHOUSE	STATE PARK
COUNTY COURTHOUSE	REGIONAL PARK
ARMORY	NATIONAL FOREST
CITY HALL	NATIONAL AND STATE FOREST
TOWN HALL	STATE FOREST
COMMUNITY CENTER	NATIONAL TRAIL
ARENA	WILDLIFE REFUGE AREA
STADIUM	WILDLIFE MANAGEMENT AREA
POST OFFICE	
POLICE STATION	
FIRE STATION	
PUBLIC LIBRARY	
PUBLIC MUSEUM	
EVENT CENTER	
CITY CENTERS	HYDROLOGIC FEATURES
TRIBAL GOVERNMENT CENTER	RIVER OR STREAM (Perennial)
CITY CENTER	LAKE, POND OR RESERVOIR
LOCALLY INCORPORATED PLACE	STREAM (Intermittent)
UNINCORPORATED COMMUNITY	DRAINAGE DITCH
	WETLAND
	ISLAND OR LAND
	REGIONAL WATERSHED



Population (U.S. Census 2020): 306



To request information from this document in an alternative format, call 651-366-4718 or 1-800-657-3774 (Greater Minnesota); 711 or 1-800-627-3529 (Minnesota Relay). You may also send an e-mail to ADarequest.dot@state.mn.us. (Please request at least one week in advance.)

LAST EDITED ON 12-10-2023