

# GENERAL HIGHWAY MAP CLAY COUNTY MINNESOTA

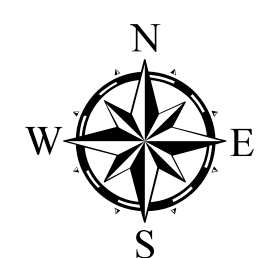
PREPARED BY THE  
MINNESOTA DEPARTMENT OF TRANSPORTATION  
OFFICE OF TRANSPORTATION SYSTEM MANAGEMENT  
IN COOPERATION WITH  
U.S. DEPARTMENT OF TRANSPORTATION  
FEDERAL HIGHWAY ADMINISTRATION

SCALE



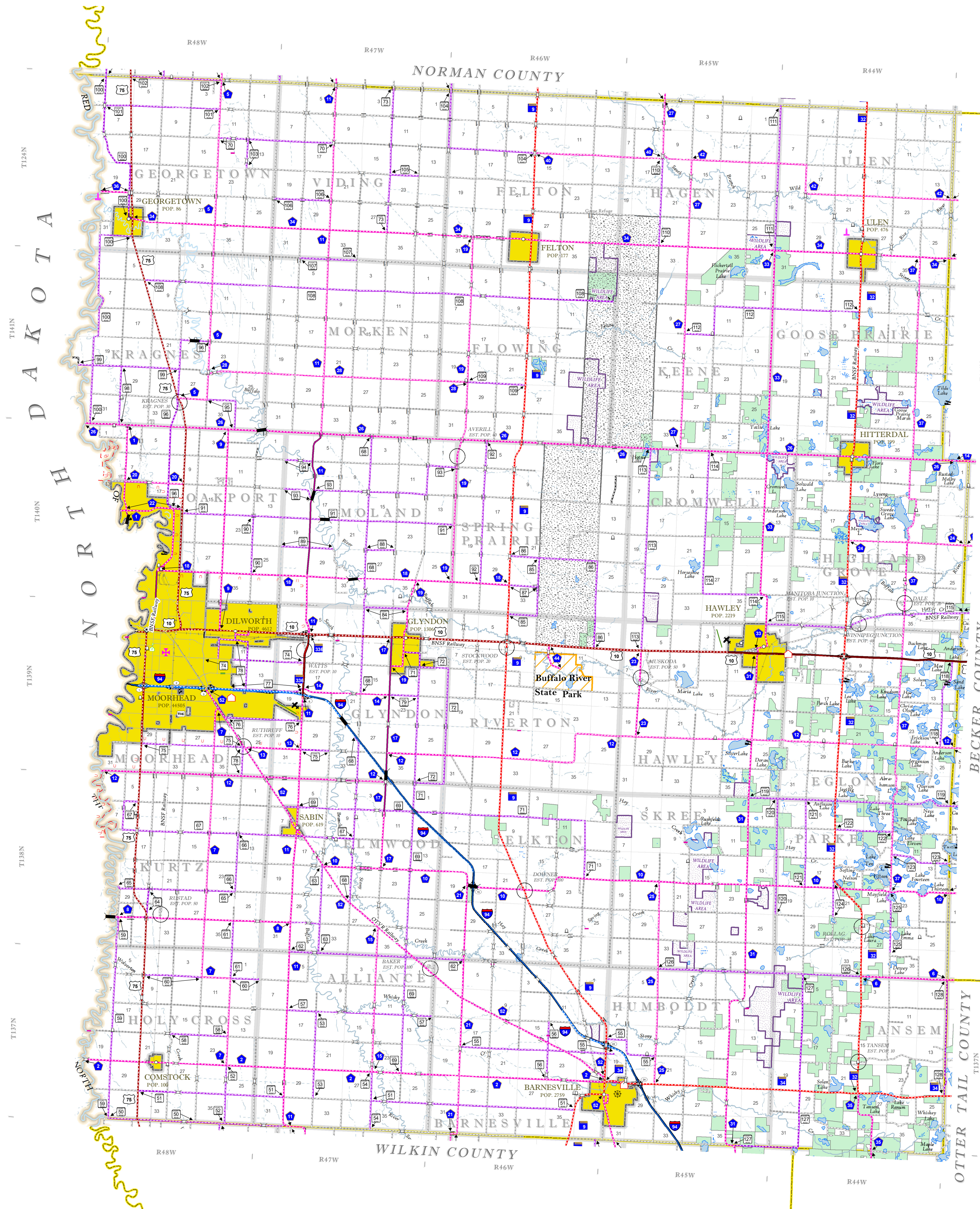
1 in = 2 miles

2023



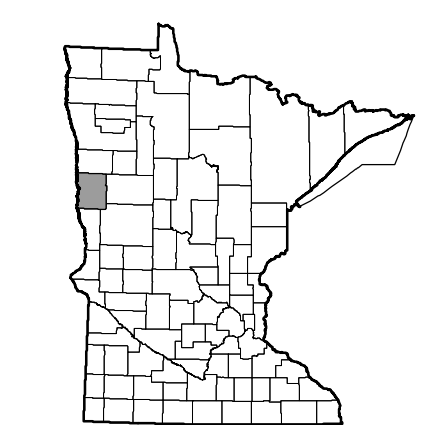
Projection:  
Transverse Mercator  
NAD 1986  
UTM Zone 15

North American Datum  
of 1986



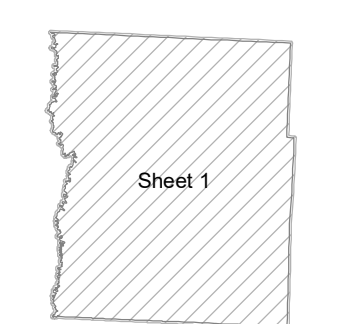
| ROAD AND ROADWAY FEATURES                |                   |
|--|-------------------|
| INTERSTATE                               | CONCRETE          |
| US HIGHWAY                               | BITUMINOUS        |
| WV HIGHWAY                               | GRAVEL            |
| COUNTY STATE AID HIGHWAY                 | DIRT/UNIMPROVED   |
| COUNTY ROAD                              | UNKNOWN           |
| TREIL ROAD                               | PROPOSED          |
| TOWNSHIP ROAD                            | RAMP OR CONNECTOR |
| UNORGANIZED TERRITORY ROAD               | INTERSTATE EXT.   |
| PRIVATE ROAD                             | GREAT RIVER ROAD  |
| OTHER ROADS:                             |                   |
| Municipal                                | National Park     |
| National Forest                          | State Park        |
| National Wildlife Refuge                 | State Forest      |
| State Game                               |                   |
| RAILROAD AND RAILWAY FEATURES            |                   |
| EMPIRE BUILDER STATION (Amtrak)          |                   |
| NORTHSTAR STATION (Commuter)             |                   |
| INFRASTRUCTURE FEATURES                  |                   |
| LONG BRIDGE (100' or Greater Span)       |                   |
| MAJOR BRIDGE (20' to 100' Span)          |                   |
| MINOR BRIDGE (5' to 20' Span)            |                   |
| DAM                                      |                   |
| LOCK AND DAM                             |                   |
| CITY CENTERS                             |                   |
| STATE CAPITAL                            |                   |
| COUNTY SEAT                              |                   |
| CITY CENTER                              |                   |
| TOWNSHIP COMMUNITY                       |                   |
| PUBLIC SERVICE FEATURES                  |                   |
| MINIOT OFFICE                            |                   |
| MINIOT TRUCK STATION                     |                   |
| HIGHWAY PATROL DISTRICT OFFICE           |                   |
| STATE TRAVEL INFORMATION CENTER          |                   |
| REST AREA (Full Service)                 |                   |
| REST AREA (Vault Toilet)                 |                   |
| WAYSIDE (Vault or Pit Toilet)            |                   |
| PARK AND RIDE LOT                        |                   |
| POINT OF ENTRY                           |                   |
| PUBLIC ACCESS POINT                      |                   |
| PUBLIC UNIVERSITY AND COLLEGE            |                   |
| PRIVATE UNIVERSITY AND COLLEGE           |                   |
| FARMLANDS                                |                   |
| CULTURAL FEATURES                        |                   |
| STATE HISTORICAL MARKER                  |                   |
| HISTORIC DISTRICT                        |                   |
| HISTORIC SITE                            |                   |
| MONUMENT                                 |                   |
| CEMETERY                                 |                   |
| AVIATION FEATURES                        |                   |
| COMMERCIAL AIRPORT (Complete Facilities) |                   |
| GENERAL AIRPORT (Limited Facilities)     |                   |
| ARSTRIP (No Facilities)                  |                   |
| SEAPLANE                                 |                   |
| AIRPORT RUNWAY                           |                   |
| BOUNDARY FEATURES                        |                   |
| TRIBAL LAND                              |                   |
| STATE OF MINNESOTA                       |                   |
| COUNTY                                   |                   |
| MUNICIPALITY                             |                   |
| UNORGANIZED TERRITORY                    |                   |
| FEDERAL ADJUSTED URSAN AREA (2014)       |                   |
| CIVIL TOWNSHIP                           |                   |
| CONGRESSIONAL TOWNSHIP                   |                   |
| SECTION                                  |                   |
| MILITARY                                 |                   |
| VOYAGEURS NATIONAL PARK                  |                   |
| BOUNDARY WATERS CANOE AREA WILDERNESS    |                   |
| STATE PARK                               |                   |
| REGIONAL PARK                            |                   |
| NATIONAL FOREST                          |                   |
| NATIONAL AND STATE FOREST                |                   |
| STATE FOREST                             |                   |
| NATIONAL TRAIL                           |                   |
| WILDLIFE REFUGE AREA                     |                   |
| WILDLIFE MANAGEMENT AREA                 |                   |
| HYDROLOGIC FEATURES                      |                   |
| LAKE, POND OR RESERVOIR                  |                   |
| RIVER OR STREAM (Perennial)              |                   |
| STREAM (Intermittent)                    |                   |
| DRAINAGE DITCH                           |                   |
| WETLAND                                  |                   |
| ISLAND OR LAND                           |                   |
| REGIONAL WATERSHED                       |                   |

Outline Map of Minnesota showing location of the County within the state.



Outline Map of the County.

Area of this County 1,053.72 Sq. Miles  
Land Area 1,045.37 Sq. Miles  
2020 Total County Population 65,318



To request information from this document in an alternative format, call 651-366-4718 or 1-800-657-3774 (Greater Minnesota); 711 or 1-800-627-3529 (Minnesota Relay). You may also send an e-mail to ADRequest.dot@state.mn.us. (Please request at least one week in advance.)

NOTE: FOR DETAIL OF COUNTY STATE AID HIGHWAYS AND COUNTY ROADS IN INCORPORATED PLACE, SEE MAPS OF MUNICIPALITIES.

LAST EDITED ON 1-02-2024

SHEET 1 OF 1