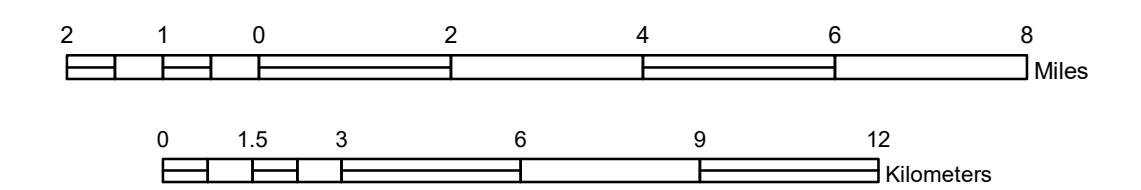


# GENERAL HIGHWAY MAP KOOCHICHING COUNTY MINNESOTA

PREPARED BY THE  
MINNESOTA DEPARTMENT OF TRANSPORTATION  
OFFICE OF TRANSPORTATION SYSTEM MANAGEMENT  
IN COOPERATION WITH  
U.S. DEPARTMENT OF TRANSPORTATION  
FEDERAL HIGHWAY ADMINISTRATION

SCALE



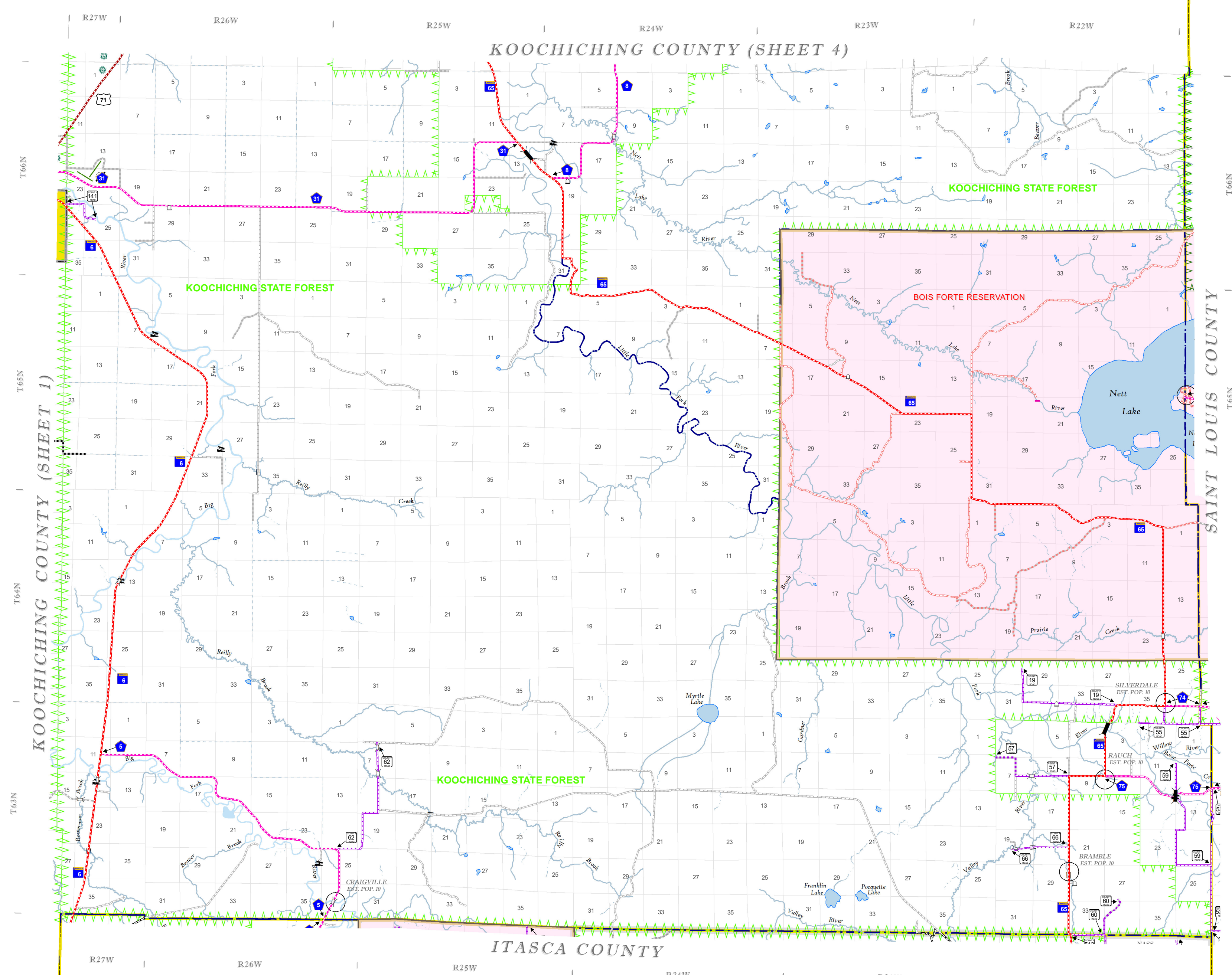
1 in = 2 miles

2023



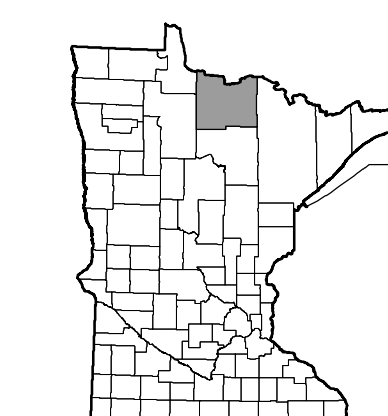
Projection:  
Transverse Mercator  
NAD 1986  
UTM Zone 15

North American Datum  
of 1986



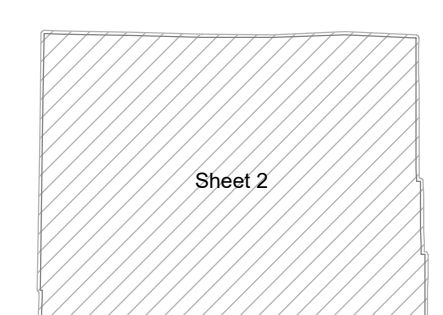
ROAD AND ROADWAY FEATURES	
INTERSTATE	CONCRETE
US HIGHWAY	BITUMINOUS
STATE AID HIGHWAY	GRAVEL
COUNTY ROAD	DIRT/UNIMPROVED
TOWNSHIP ROAD	UNKNOWN
UNORGANIZED TERRITORY ROAD	PROPOSED
PRIVATE ROAD	RAMP OR CONNECTOR
OTHER ROADS	INTERSTATE EXT.
MUNICIPAL	GREAT RIVER ROAD
Military	State Park
National Park	National Forest
Monument	State Forest
National Wildlife Refuge	State Game
RAILROAD AND RAILWAY FEATURES	
EMPIRE BUILDER STATION (AMTRAK)	AVIATION FEATURES
NORTHSTAR STATION (COMMUTER)	COMMERCIAL AIRPORT (Complete Facilities)
INFRASTRUCTURE FEATURES	
LONG BRIDGE (100' or Greater Span)	GENERAL AIRPORT (Limited Facilities)
MAJOR BRIDGE (20' to 100' Span)	ARSTRIP (No Facilities)
MINOR BRIDGE (5' to 20' Span)	SEAPLANE
BOUNDARY FEATURES	
LOCK AND DAM	TRIBAL LAND
CITY CENTERS	
STATE CAPITAL	STATE OF MINNESOTA
COUNTY SEAT	COUNTY
CITY CENTER	MUNICIPALITY
TOWNSHIP SEAT	UNORGANIZED TERRITORY
TOWNSHIP COMMUNITY	FEDERAL ADJUSTED URBAN AREA (2014)
PUBLIC SERVICE FEATURES	
MINOT OFFICE	CIVIL TOWNSHIP
MINOT TRUCK STATION	CONGRESSIONAL TOWNSHIP
HIGHWAY PATROL DISTRICT OFFICE	SECTION
STATE TRAVEL INFORMATION CENTER	MILITARY
REST AREA (Full Service)	VOYAGEURS NATIONAL PARK
REST AREA (Vault Toilets)	BOUNDARY WATERS CANYON AREA WILDERNESS
WAYSIDE (Vault or Pit Toilets)	STATE PARK
PARK AND RIDE LOT	REGIONAL FOREST
POINT OF ENTRY	NATIONAL FOREST
PUBLIC ACCESS POINT	NATIONAL AND STATE FOREST
PUBLIC UNIVERSITY AND COLLEGE	STATE FOREST
PRIVATE UNIVERSITY AND COLLEGE	NATIONAL TRAIL
FARMLANDS	WILDLIFE REFUGE AREA
CULTURAL FEATURES	WILDLIFE MANAGEMENT AREA
STATE HISTORICAL MARKER	HYDROLOGIC FEATURES
HISTORIC DISTRICT	LAKE, POND OR RESERVOIR
HISTORIC SITE	RIVER OR STREAM (PERMANENT)
MONUMENT	STREAM (Intermittent)
CEMETERY	DRAINAGE DITCH
	WETLAND
	ISLAND OR LAND
	REGIONAL WATERSHED

Outline Map of Minnesota showing location of the County within the state.



Outline Map of the County.

Area of this County 3,153.39 Sq. Miles  
Land Area 3,104.07 Sq. Miles  
2020 Total County Population 12062



LAST EDITED ON 1-02-2024

SHEET 2 OF 4

To request information from this document in an alternative format, call 651-366-4718 or 1-800-657-3774 (Greater Minnesota); 711 or 1-800-627-3529 (Minnesota Relay). You may also send an e-mail to ADRequest.dot@state.mn.us. (Please request at least one week in advance.)

NOTE: FOR DETAIL OF COUNTY STATE AID HIGHWAYS AND COUNTY ROADS IN INCORPORATED PLACE, SEE MAPS OF MUNICIPALITIES.