

# GENERAL HIGHWAY MAP ROCK COUNTY MINNESOTA

PREPARED BY THE  
MINNESOTA DEPARTMENT OF TRANSPORTATION  
OFFICE OF TRANSPORTATION SYSTEM MANAGEMENT  
IN COOPERATION WITH  
U.S. DEPARTMENT OF TRANSPORTATION  
FEDERAL HIGHWAY ADMINISTRATION

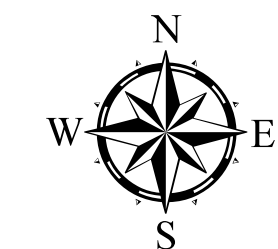
SCALE



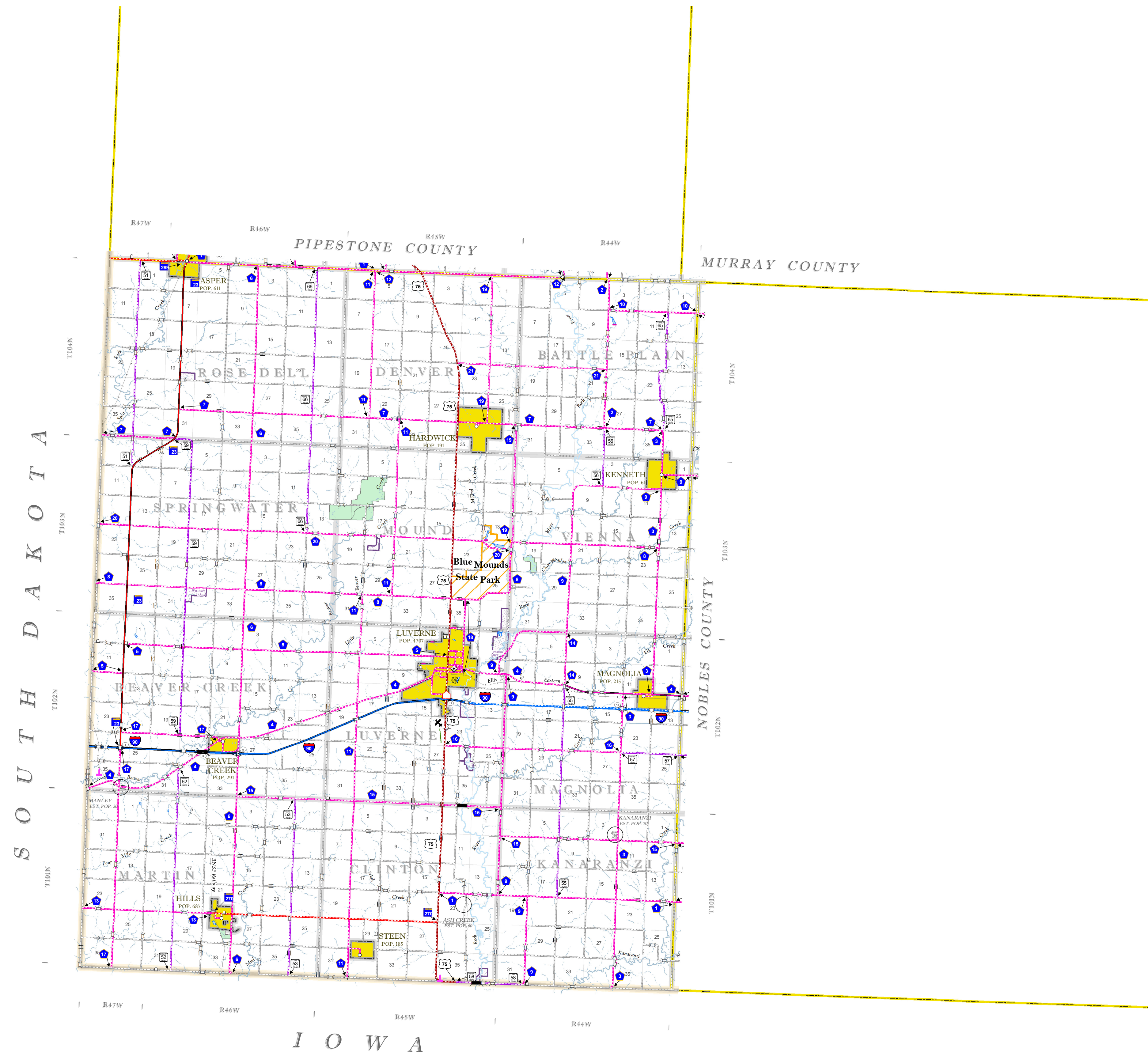
1 in = 2 miles

2023

Projection:  
Transverse Mercator  
NAD 1986  
UTM Zone 15

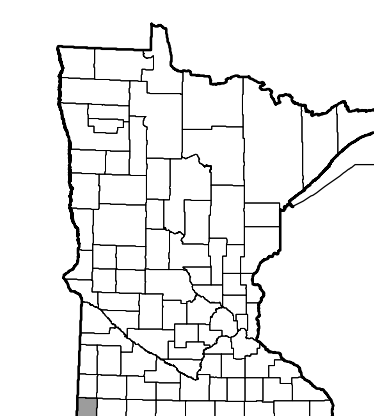


North American Datum  
of 1986



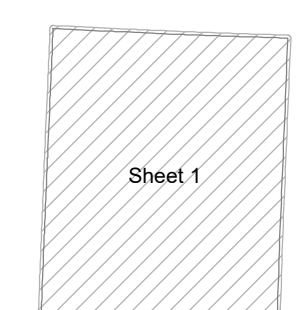
ROAD AND ROADWAY FEATURES		
INTERSTATE	CONCRETE	
US HIGHWAY	BITUMINOUS	
MINN. HIGHWAY	GRAVEL	
COUNTY STATE AID HIGHWAY	DIRT/UNIMPROVED	
COUNTY ROAD	UNKNOWN	
TRIAL ROAD	PROPOSED	
TOWNSHIP ROAD	RAMP OR CONNECTOR	
UNORGANIZED TERRITORY ROAD	INTERSTATE EXT.	
PRIVATE ROAD	GREAT RIVER ROAD	
OTHER ROADS:		
MUNICIPAL		
Military		
National Park		
National Monument		
National Wildlife Refuge		
State Park		
State Forest		
State Game		
RAILROAD AND RAILWAY FEATURES		
EMPIRE BUILDER STATION (AMTRAK)		
NORTHSTAR STATION (COMMUTER)		
INFRASTRUCTURE FEATURES		
LONG BRIDGE (100' OR GREATER SPAN)		
MAJOR BRIDGE (20' TO 100' SPAN)		
MINOR BRIDGE (5' TO 20' SPAN)		
DAM		
LOCK AND DAM		
CITY CENTERS		
STATE CAPITAL		
COUNTY SEAT		
CITY CENTER		
TOWNSHIP COMMUNITY		
PUBLIC SERVICE FEATURES		
MINOT OFFICE		
MINOT TRUCK STATION		
HIGHWAY PATROL DISTRICT OFFICE		
STATE TRAVEL INFORMATION CENTER		
REST AREA (FULL SERVICE)		
REST AREA (VAULT TOILET)		
WAYSIDE (VAULT OR PVI TOILET)		
PARK AND RIDE LOT		
PORT OF ENTRY		
PUBLIC ACCESS POINT		
PUBLIC UNIVERSITY AND COLLEGE		
PRIVATE UNIVERSITY AND COLLEGE		
FARMGROUNDS		
CULTURAL FEATURES		
STATE HISTORICAL MARKER		
HISTORIC DISTRICT		
HISTORIC SITE		
MONUMENT		
CEMETERY		
	AVIATION FEATURES	
	COMMERCIAL AIRPORT (Complete Facilities)	
	GENERAL AIRPORT (Limited Facilities)	
	ARSTRIP (No Facilities)	
	SEAPLANE	
	AIRPORT RUNWAY	
	BOUNDARY FEATURES	
	TRIBAL LAND	
	STATE OF MINNESOTA	
	COUNTY	
	MUNICIPALITY	
	UNORGANIZED TERRITORY	
	FEDERAL ADJUSTED URBAN AREA (2014)	
	CIVIL TOWNSHIP	
	CONGRESSIONAL TOWNSHIP	
	SECTION	
	MILITARY	
	VOYAGEURS NATIONAL PARK	
	BOUNDARY WATERS CANOE AREA WILDERNESS	
	STATE PARK	
	NATIONAL FOREST	
	NATIONAL AND STATE FOREST	
	STATE FOREST	
	NATIONAL TRAIL	
	WILDLIFE REFUGE AREA	
	WILDLIFE MANAGEMENT AREA	
	HYDROLOGIC FEATURES	
	LAKE, POND OR RESERVOIR	
	RIVER OR STREAM (PERMANENT)	
	STREAM (INTERMITTENT)	
	DRAINAGE DITCH	
	WETLAND	
	ISLAND OR LAND	
	REGIONAL WATERSHED	

Outline Map of Minnesota showing location of the County within the state.



Outline Map of the County.

Area of this County 483.05 Sq. Miles  
Land Area 482.46 Sq. Miles  
2020 Total County Population 9704



LAST EDITED ON 1-02-2024

SHEET 1 OF 1