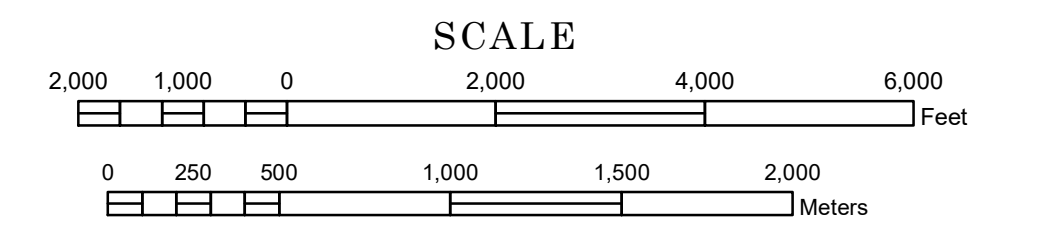


STREET SERIES DULUTH

PREPARED BY THE
MINNESOTA DEPARTMENT OF TRANSPORTATION
OFFICE OF TRANSPORTATION SYSTEM MANAGEMENT

IN COOPERATION WITH
U.S. DEPARTMENT OF TRANSPORTATION
FEDERAL HIGHWAY ADMINISTRATION



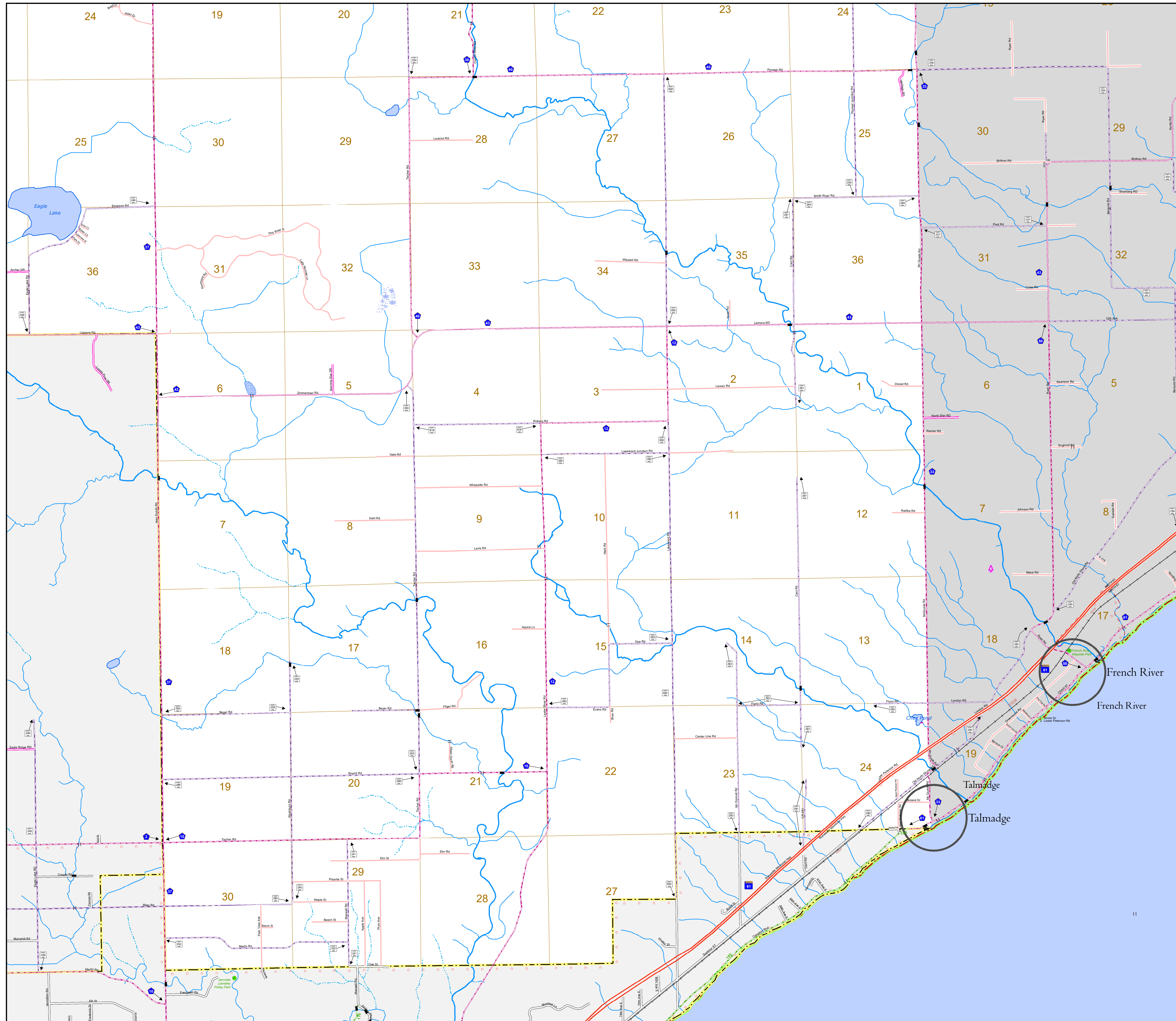
1 in = 1,840 ft

2022

Projection:
Transverse Mercator
NAD 1986
UTM Zone 15



North American Datum
of 1986



ROAD AND ROADWAY FEATURES		PUBLIC SERVICE FEATURES	
INTERSTATE	[Symbol]	MINDOT OFFICE	[Symbol]
US HIGHWAY	[Symbol]	MINDOT TRUCK STATION	[Symbol]
MN HIGHWAY	[Symbol]	HIGHWAY PATROL DISTRICT OFFICE	[Symbol]
COUNTY STATE AID HIGHWAY	[Symbol]	STATE TRAVEL INFORMATION CENTER	[Symbol]
COUNTY ROAD	[Symbol]	REST AREA (Full Service)	[Symbol]
MUNICIPAL STATE AID STREET	[Symbol]	REST AREA (Vault Toilet)	[Symbol]
MUNICIPAL STREET	[Symbol]	WAYSIDE (Vault or Pit Toilet)	[Symbol]
PRIVATE STREET/ROAD	[Symbol]	LOCAL PARK	[Symbol]
TOWNSHIP ROAD	[Symbol]	PUBLIC ACCESS POINT	[Symbol]
UNORGANIZED TERRITORY ROAD	[Symbol]	FAIRGROUNDS	[Symbol]
RAMP OR CONNECTOR	[Symbol]	PUBLIC ACCESS POINT	[Symbol]
INTERSTATE EXIT	[Symbol]	PARK AND RIDE LOT	[Symbol]
GREAT RIVER ROAD	[Symbol]	MIN STATE COLLEGE AND UNIVERSITY SYSTEM (MNSCU)	[Symbol]
OTHER ROADS		UNIVERSITY OF MN SYSTEM	[Symbol]
Farmhouse	[Symbol]	State Historical Marker	[Symbol]
Shore Park	[Symbol]	Historic District	[Symbol]
Home Service	[Symbol]	Historic Site	[Symbol]
National Fire	[Symbol]	Monument	[Symbol]
National Wildlife	[Symbol]	BOUNDARY FEATURES	
Municipal	[Symbol]	TRIBAL LAND	[Symbol]
AVIATION FEATURES		COUNTY	[Symbol]
COMMERCIAL AIRPORT	[Symbol]	MUNICIPALITY	[Symbol]
GENERAL AIRPORT	[Symbol]	ADJACENT MUNICIPALITY	[Symbol]
AIRSTRIIP	[Symbol]	FEDERAL ADJUSTED URBAN AREA (2014)	[Symbol]
SEAPLANE	[Symbol]	MILITARY	[Symbol]
AIRPORT RUNWAY	[Symbol]	VOYAGEURS NATIONAL PARK	[Symbol]
RAILROAD AND RAILWAY FEATURES		BOUNDARY WATERS CANOE AREA WILDERNESS	[Symbol]
RAILWAY	[Symbol]	STATE PARK	[Symbol]
EMPIRE BUILDER STATION (Active)	[Symbol]	REGIONAL PARK	[Symbol]
NORTHSTAR STATION (Construction)	[Symbol]	NATIONAL FOREST	[Symbol]
LIGHT RAIL	[Symbol]	NATIONAL AND STATE FOREST	[Symbol]
BLUE LINE	[Symbol]	STATE FOREST	[Symbol]
GREEN LINE	[Symbol]	NATIONAL TRAIL	[Symbol]
INFRASTRUCTURE FEATURES		WILDLIFE REFUGE AREA	[Symbol]
LONG BRIDGE (300' or Greater Span)	[Symbol]	WILDLIFE MANAGEMENT AREA	[Symbol]
MAJOR BRIDGE (20' to 300' Span)	[Symbol]	RIVER OR STREAM (Perennial)	[Symbol]
MINOR BRIDGE (5' to 20' Span)	[Symbol]	LAKE, POND OR RESERVOIR	[Symbol]
DAM	[Symbol]	STREAM (Intermittent)	[Symbol]
LOCK AND DAM	[Symbol]	DRAINAGE DITCH	[Symbol]
PUBLIC FACILITIES		WETLAND	[Symbol]
STATE CAPITOL	[Symbol]	ISLAND OR LAND	[Symbol]
FEDERAL COURTHOUSE	[Symbol]	REGIONAL WATERSHED	[Symbol]
COUNTY COURTHOUSE	[Symbol]		
ARMORY	[Symbol]		
CITY CENTERS			
TRIBAL GOVERNMENT CENTER	[Symbol]		
CITY CENTER	[Symbol]		
LOCALLY KNOWN PLACE	[Symbol]		
UNINCORPORATED COMMUNITY	[Symbol]		

To request information from this document in an alternative format, call 651-366-4718 or 1-800-627-3774 (Greater Minnesota), 711 or 1-800-627-3529 (Minnesota Relay). You may also send an e-mail to ADRequest.dot@state.mn.us. (Please request at least one week in advance.)