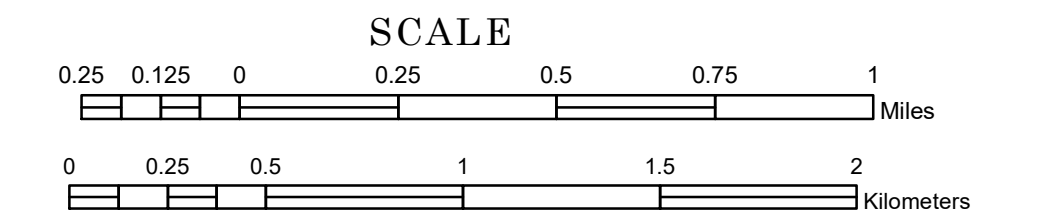


TOWNSHIP OF BALL BLUFF

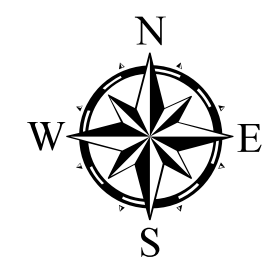
PREPARED BY THE
MINNESOTA DEPARTMENT OF TRANSPORTATION
OFFICE OF TRANSPORTATION SYSTEM MANAGEMENT

IN COOPERATION WITH
U.S. DEPARTMENT OF TRANSPORTATION
FEDERAL HIGHWAY ADMINISTRATION

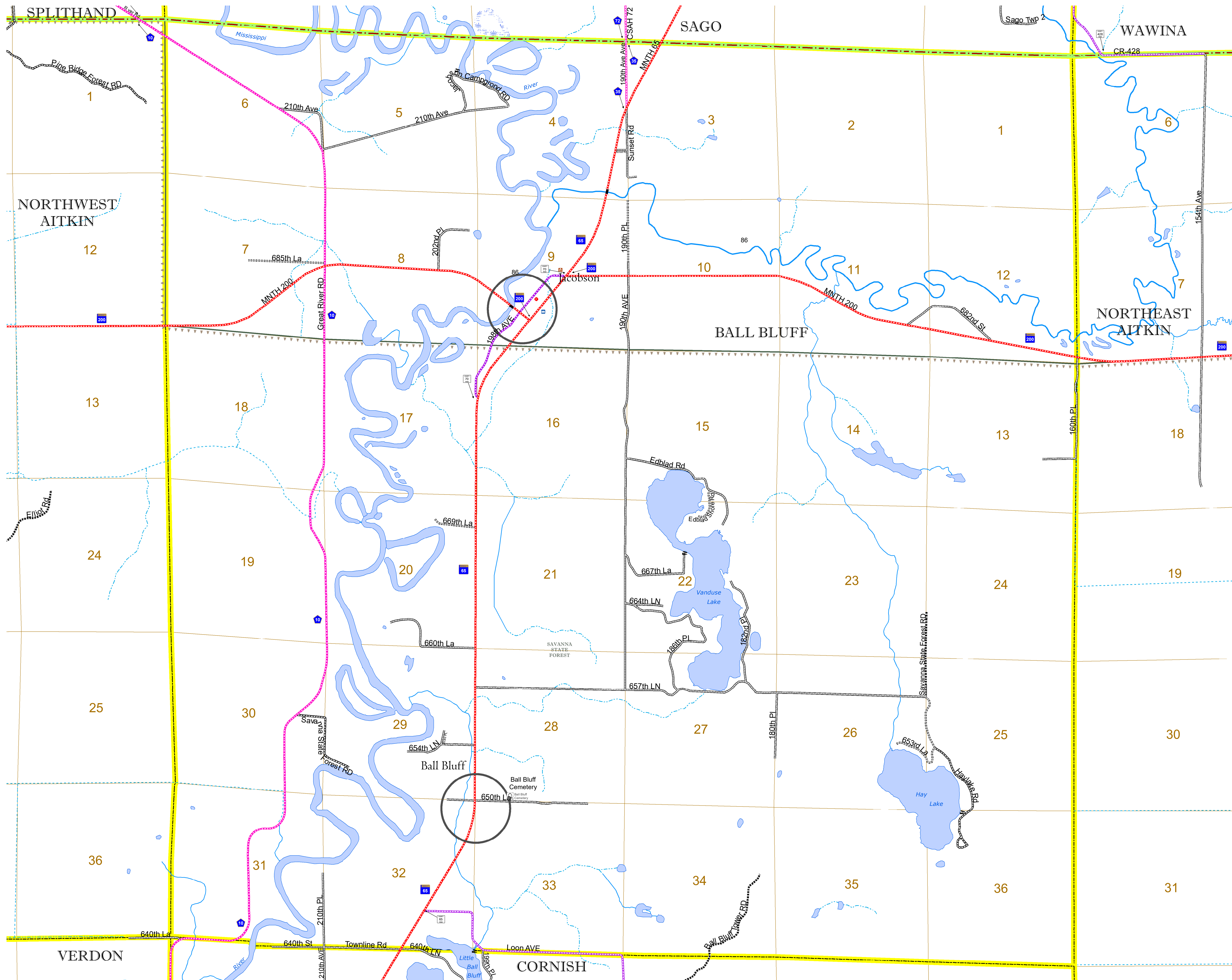


1 in = 1,600 ft
2022

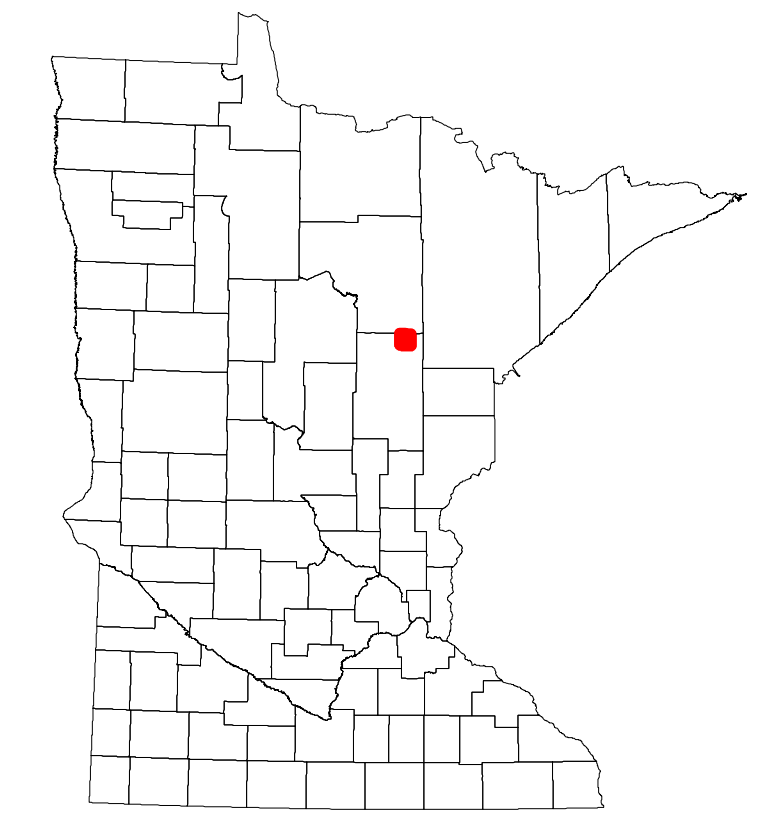
Projection:
Transverse Mercator
NAD 1986
UTM Zone 15



North American Datum
of 1986



ROAD AND ROADWAY FEATURES		AVIATION FEATURES	
INTERSTATE		COMMERCIAL AIRPORT	
US HIGHWAY		GENERAL AIRPORT	
MN HIGHWAY		AIRSTRIP	
COUNTY STATE AID HIGHWAY		SEAPLANE	
COUNTY ROAD		AIRPORT RUNWAY	
TOWNSHIP ROAD		BOUNDARY FEATURES	
UNORGANIZED TERRITORY ROAD		TRIBAL LAND	
OTHER ROADS		STATE OF MINNESOTA	
MUNICIPAL		COUNTY	
PRIVATE		MUNICIPALITY	
NATIONAL MONUMENT		UNORGANIZED TERRITORY	
NATIONAL WILDLIFE REFUGUE		FEDERAL ADJUSTED URBAN AREA (2014)	
STATE FOREST		CIVIL TOWNSHIP	
STATE GAME PRESERVE		CONGRESSIONAL TOWNSHIP	
RAILROAD AND RAILWAY FEATURES		SECTION	
EMPIRE BUILDER STATION (AMTRAK)		MILITARY	
NORTHSTAR STATION (COMMUTER)		VOYAGEURS NATIONAL PARK	
LIGHT RAIL		BOUNDARY WATERS CANOE AREA WILDERNESS	
BLUE LINE		STATE PARK	
GREEN LINE		REGIONAL PARK	
INFRASTRUCTURE FEATURES		NATIONAL FOREST	
LONG BRIDGE (300' OR GREATER SPAN)		NATIONAL AND STATE FOREST	
MAJOR BRIDGE (20' TO 300' SPAN)		STATE FOREST	
MINOR BRIDGE (5' TO 20' SPAN)		NATIONAL TRAIL	
DAM		WILDLIFE REFUGUE AREA	
LOCK-AND-DAM		WILDLIFE MANAGEMENT AREA	
CITY CENTERS		HYDROLOGIC FEATURES	
STATE CAPITAL		LAKE, POND OR RESERVOIR	
COUNTY SEAT		STREAM (INTERMITTENT)	
CITY CENTER		DRAINAGE DITCH	
UNINCORPORATED COMMUNITY		WETLAND	
PUBLIC SERVICE FEATURES		HISTORIC DISTRICT	
MNDOT OFFICE		HISTORIC SITE	
MNDOT TRUCK STATION		MONUMENT	
HIGHWAY PATROL DISTRICT OFFICE			
STATE TRAVEL INFORMATION CENTER			
REST AREA (FULL SERVICE)			
REST AREA (VAULT TOILET)			
WAYSIDE (VAULT OR PTT TOILET)			
PARK AND RIDE LOT			
PORT OF ENTRY			
PUBLIC ACCESS POINT			
MN STATE COLLEGE AND UNIVERSITY SYSTEM (MNSCU)			
UNIVERSITY OF MN SYSTEM			
FAIRGROUNDS			
CULTURAL FEATURES			
STATE HISTORICAL MARKER			



Population (U.S. Census 2010): 278

To request information from this document in an alternative format, call 651-366-4718 or 1-800-657-3774 (Greater Minnesota); 711 or 1-800-627-3529 (Minnesota Relay). You may also send an e-mail to ADarequest.dot@state.mn.us. (Please request at least one week in advance.)