

# TOWNSHIP OF LAKE PARK

PREPARED BY THE  
MINNESOTA DEPARTMENT OF TRANSPORTATION  
OFFICE OF TRANSPORTATION SYSTEM MANAGEMENT

IN COOPERATION WITH  
U.S. DEPARTMENT OF TRANSPORTATION  
FEDERAL HIGHWAY ADMINISTRATION



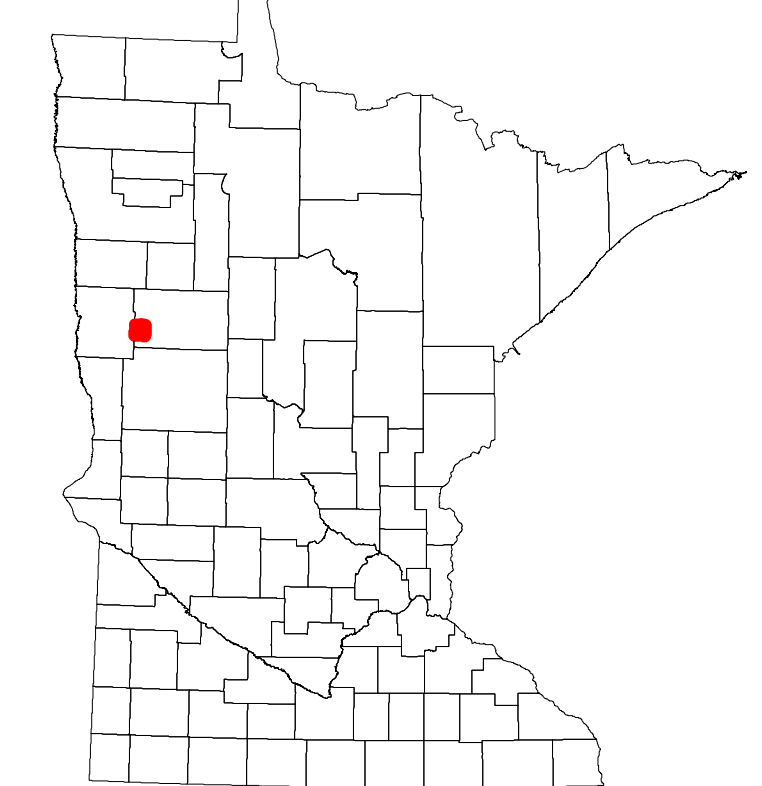
1 in = 1,600 ft  
**2022**

Projection:  
Transverse Mercator  
NAD 1986  
UTM Zone 15

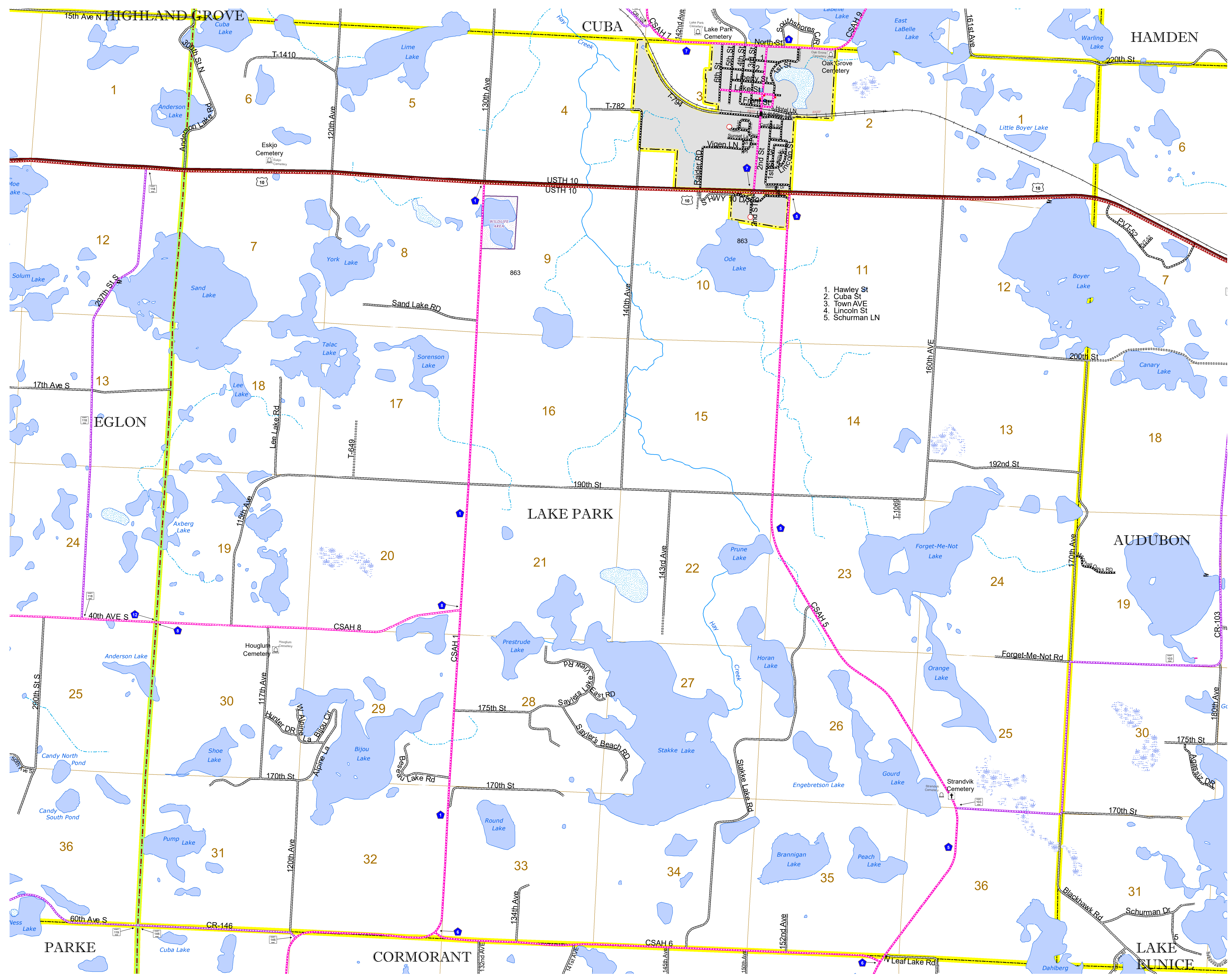


North American Datum  
of 1986

ROAD AND ROADWAY FEATURES		AVIATION FEATURES	
INTERSTATE	CONCRETE	COMMERCIAL AIRPORT	GENERAL AIRPORT
US HIGHWAY	BITUMINOUS	AIRSTRIP	SEAPLANE
MN HIGHWAY	GRAVEL	AIRPORT RUNWAY	BOUNDARY FEATURES
COUNTY STATE AID HIGHWAY	DIRT/UNIMPROVED	TRIAL LAND	TRIBAL LAND
COUNTY ROAD	OTHER	STATE OF MINNESOTA	COUNTY
TOWNSHIP ROAD	UNKNOWN	MUNICIPALITY	MUNICIPALITY
UNORGANIZED TERRITORY ROAD		UNORGANIZED TERRITORY	UNORGANIZED TERRITORY
OTHER ROADS		FEDERAL ADJUSTED URBAN AREA (2014)	CIVIL TOWNSHIP
Municipal	RAMP OR CONNECTOR	CONGRESSIONAL TOWNSHIP	SECTION
Private	INTERSTATE EXIT	MILITARY	MILITARY
National Monument	AVIATION FEATURES	VOYAGEURS NATIONAL PARK	VOYAGEURS NATIONAL PARK
National Wildlife	GENERAL AIRPORT	BOUNDARY WATERS CANOE AREA WILDERNESS	BOUNDARY WATERS CANOE AREA WILDERNESS
State Game	AIRSTRIP	STATE PARK	STATE PARK
Muslim	SEAPLANE	REGIONAL PARK	REGIONAL PARK
	AIRPORT RUNWAY	NATIONAL FOREST	NATIONAL FOREST
	BOUNDARY FEATURES	NATIONAL AND STATE FOREST	NATIONAL AND STATE FOREST
	TRIBAL LAND	STATE FOREST	STATE FOREST
	STATE OF MINNESOTA	WILDLIFE REFUGUE AREA	WILDLIFE REFUGUE AREA
	COUNTY	WILDLIFE MANAGEMENT AREA	WILDLIFE MANAGEMENT AREA
	MUNICIPALITY	HYDROLOGIC FEATURES	HYDROLOGIC FEATURES
	UNORGANIZED TERRITORY	RIVER OR STREAM (PERMANENT)	RIVER OR STREAM (PERMANENT)
	FEDERAL ADJUSTED URBAN AREA (2014)	LAKE, POND OR RESERVOIR	LAKE, POND OR RESERVOIR
	CIVIL TOWNSHIP	STREAM (INTERMITTENT)	STREAM (INTERMITTENT)
	CONGRESSIONAL TOWNSHIP	DRAINAGE DITCH	DRAINAGE DITCH
	SECTION	WETLAND	WETLAND
	MILITARY	ISLAND OR LAND	ISLAND OR LAND
	VOYAGEURS NATIONAL PARK	REGIONAL WATERSHED	REGIONAL WATERSHED
	BOUNDARY WATERS CANOE AREA WILDERNESS		
	STATE PARK		
	REGIONAL PARK		
	NATIONAL FOREST		
	NATIONAL AND STATE FOREST		
	STATE FOREST		
	WILDLIFE REFUGUE AREA		
	WILDLIFE MANAGEMENT AREA		
	HYDROLOGIC FEATURES		
	RIVER OR STREAM (PERMANENT)		
	LAKE, POND OR RESERVOIR		
	STREAM (INTERMITTENT)		
	DRAINAGE DITCH		
	WETLAND		
	ISLAND OR LAND		
	REGIONAL WATERSHED		



Population (U.S. Census 2010): 481



To request information from this document in an alternative format, call 651-366-4718 or 1-800-657-3774 (Greater Minnesota); 711 or 1-800-627-3529 (Minnesota Relay). You may also send an e-mail to ADarequest.dot@state.mn.us. (Please request at least one week in advance.)