

TOWNSHIP OF RICHWOOD

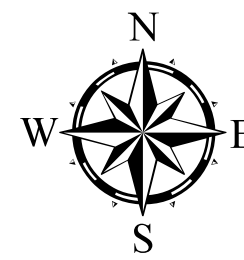
PREPARED BY THE
MINNESOTA DEPARTMENT OF TRANSPORTATION
OFFICE OF TRANSPORTATION SYSTEM MANAGEMENT

IN COOPERATION WITH
U.S. DEPARTMENT OF TRANSPORTATION
FEDERAL HIGHWAY ADMINISTRATION



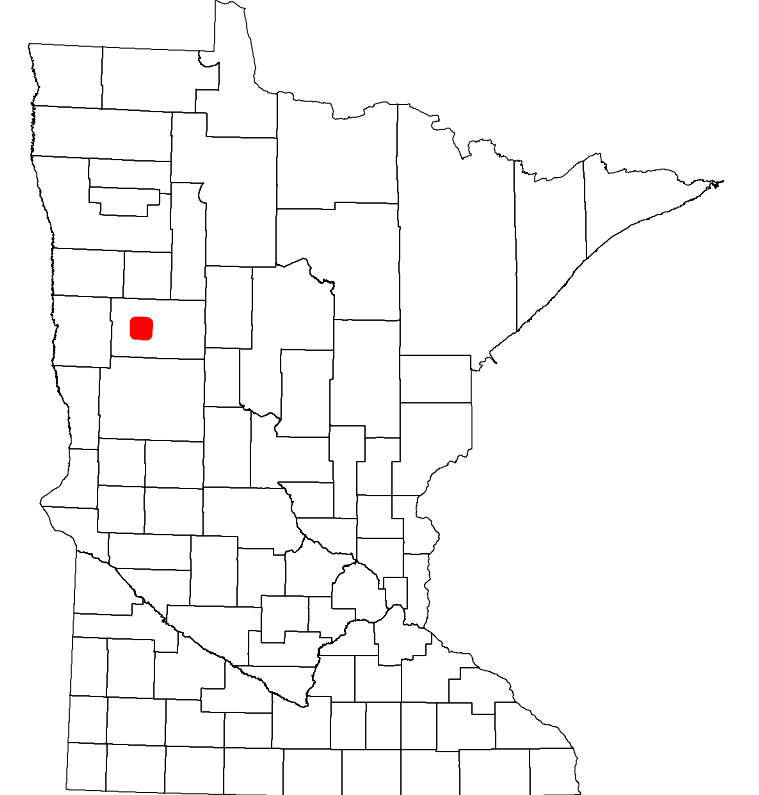
2022

Projection:
Transverse Mercator
NAD 1986
UTM Zone 15

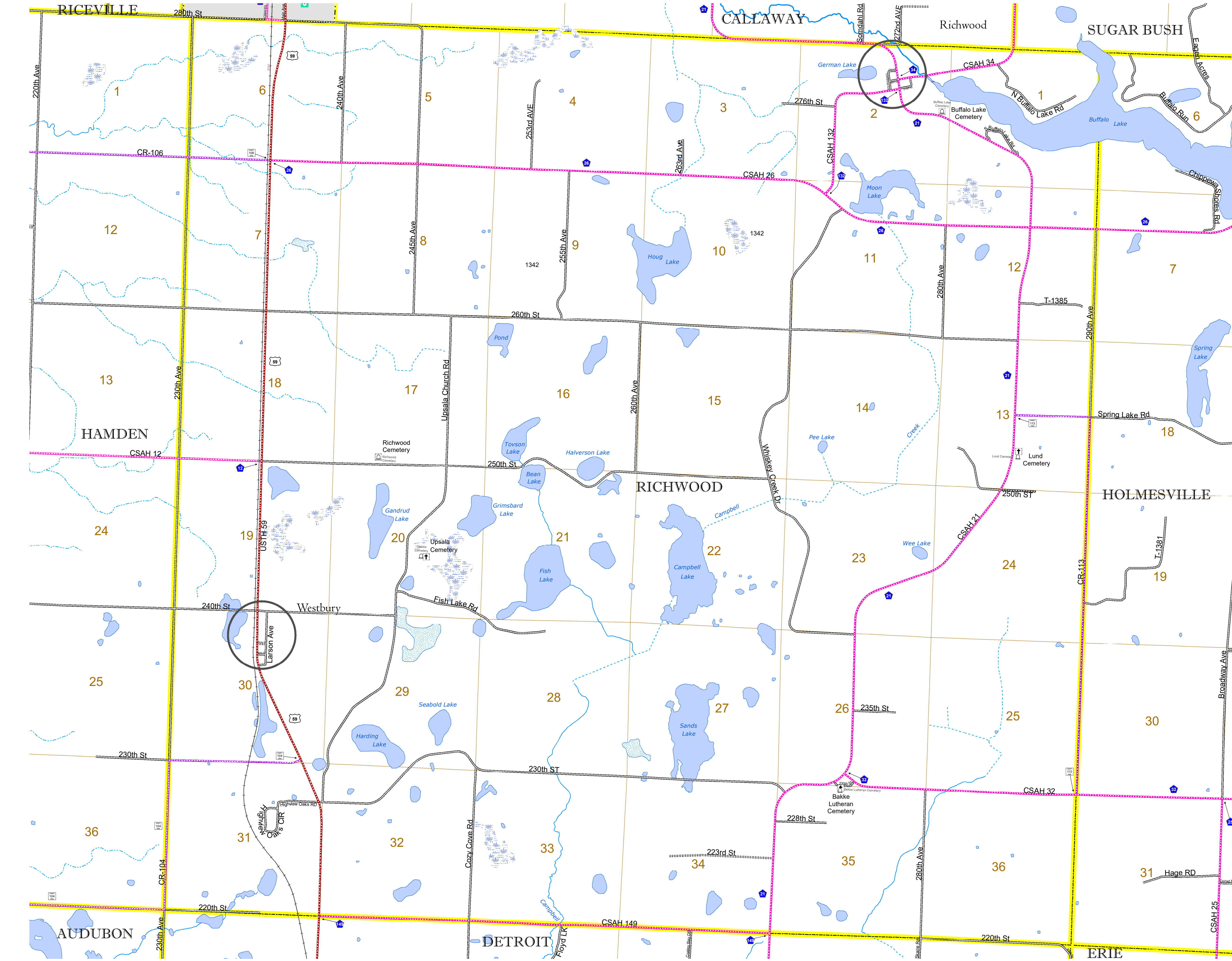


North American Datum
of 1986

ROAD AND ROADWAY FEATURES		BOUNDARY FEATURES	
INTERSTATE	CONCRETE	TRIBAL LAND	STATE OF MINNESOTA
US HIGHWAY	BITUMINOUS	COUNTY	MUNICIPALITY
MN HIGHWAY	GRAVEL	UNORGANIZED TERRITORY	FEDERAL ADJUSTED URBAN AREA (2014)
COUNTY STATE AID HIGHWAY	DIRT/UNIMPROVED	CIVIL TOWNSHIP	CONGRESSIONAL TOWNSHIP
COUNTY ROAD	DIRT/UNIMPROVED	SECTION	MILITARY
TOWNSHIP ROAD	OTHER	VOYAGEURS NATIONAL PARK	BOUNDARY WATERS CANOE AREA WILDERNESS
UNORGANIZED TERRITORY ROAD	UNKNOWN	REGIONAL PARK	NATIONAL FOREST
OTHER ROADS		NATIONAL AND STATE FOREST	STATE FOREST
Municipal	RAMP OR CONNECTOR	WILDLIFE REFUGE AREA	WILDLIFE MANAGEMENT AREA
Private	INTERSTATE EXIT	WILDLIFE REFUGE AREA	HYDROLOGIC FEATURES
National Monument	AVIATION FEATURES	RIVER OR STREAM (PERMANENT)	LAKE, POND OR RESERVOIR
National Wildlife Refuge	GENERAL AIRPORT	STREAM (INTERMITTENT)	DRAINAGE DITCH
State Park	AIRSTRIP	WETLAND	ISLAND OR LAND
Preserve	SEAPLANE	REGIONAL WATERSHED	
	AIRPORT RUNWAY		
RAILROAD AND RAILWAY FEATURES			
EMPIRE BUILDER STATION (AMTRAK)	COMMERCIAL AIRPORT		
NORTHSTAR STATION (COMPUTER)	GENERAL AIRPORT		
LIGHT RAIL	AIRSTRIP		
BLUE LINE	SEAPLANE		
GREEN LINE	AIRPORT RUNWAY		
INFRASTRUCTURE FEATURES			
LONG BRIDGE (200' OR GREATER SPAN)	TRIAL LAND		
MAJOR BRIDGE (20' TO 200' SPAN)	STATE OF MINNESOTA		
MINOR BRIDGE (5' TO 20' SPAN)	COUNTY		
DAM	MUNICIPALITY		
LOCK AND DAM	UNORGANIZED TERRITORY		
	FEDERAL ADJUSTED URBAN AREA (2014)		
	CIVIL TOWNSHIP		
	CONGRESSIONAL TOWNSHIP		
CITY CENTERS			
STATE CAPITAL	SECTION		
COUNTY SEAT	MILITARY		
CITY CENTER	VOYAGEURS NATIONAL PARK		
UNINCORPORATED COMMUNITY	BOUNDARY WATERS CANOE AREA WILDERNESS		
PUBLIC SERVICE FEATURES			
MNDOT OFFICE	STATE PARK		
MNDOT TRUCK STATION	REGIONAL PARK		
HIGHWAY PATROL DISTRICT OFFICE	NATIONAL FOREST		
STATE TRAVEL INFORMATION CENTER	NATIONAL AND STATE FOREST		
REST AREA (FULL SERVICE)	STATE FOREST		
REST AREA (VAULT TOILET)	WILDLIFE REFUGE AREA		
WAYSIDE (VAULT OR PITY TOILET)	WILDLIFE MANAGEMENT AREA		
PARK AND RIDE LOT	HYDROLOGIC FEATURES		
PORT OF ENTRY	RIVER OR STREAM (PERMANENT)		
PUBLIC ACCESS POINT	LAKE, POND OR RESERVOIR		
MN STATE COLLEGE AND UNIVERSITY SYSTEM (MNSCU)	STREAM (INTERMITTENT)		
UNIVERSITY OF MN SYSTEM	DRAINAGE DITCH		
FAIRGROUNDS	WETLAND		
	ISLAND OR LAND		
	REGIONAL WATERSHED		



Population (U.S. Census 2010): 662



To request information from this document in an alternative format, call 651-366-4718 or 1-800-657-3774 (Greater Minnesota); 711 or 1-800-627-3529 (Minnesota Relay). You may also send an e-mail to ADRequest.dot@state.mn.us. (Please request at least one week in advance.)