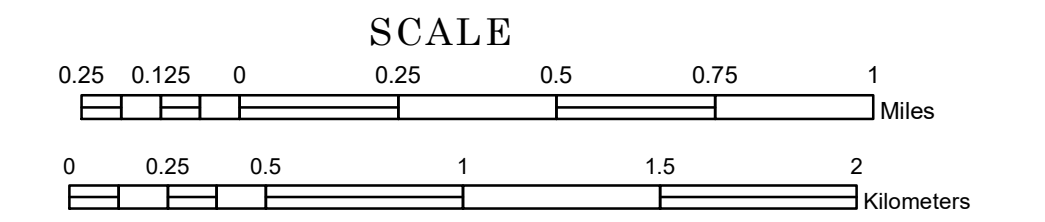


TOWNSHIP OF WALWORTH

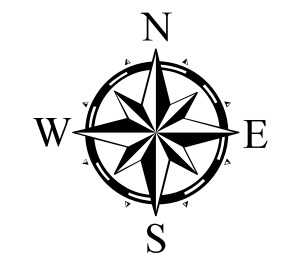
PREPARED BY THE
MINNESOTA DEPARTMENT OF TRANSPORTATION
OFFICE OF TRANSPORTATION SYSTEM MANAGEMENT

IN COOPERATION WITH
U.S. DEPARTMENT OF TRANSPORTATION
FEDERAL HIGHWAY ADMINISTRATION



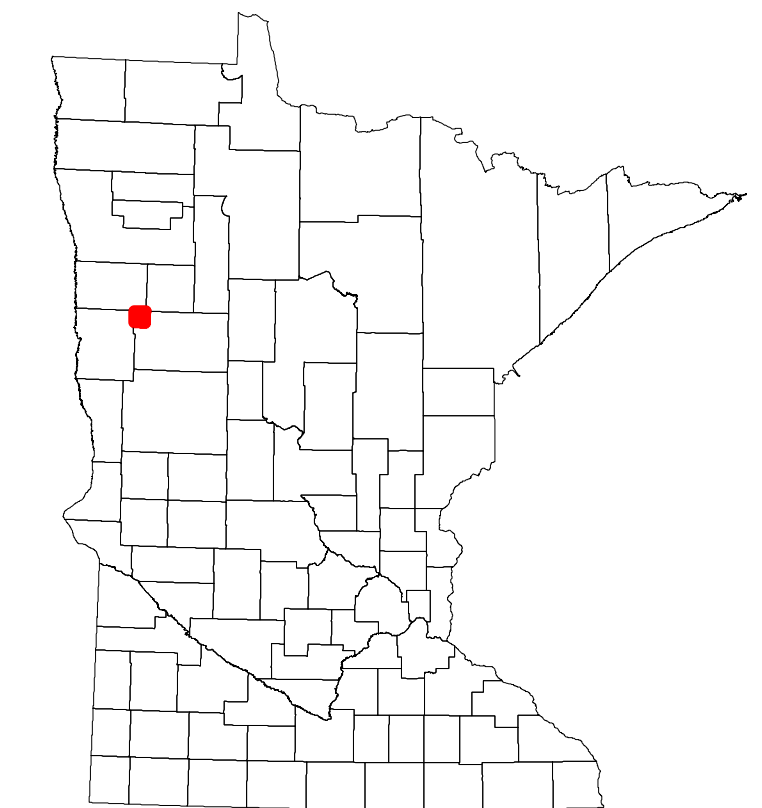
2022

Projection:
Transverse Mercator
NAD 1986
UTM Zone 15

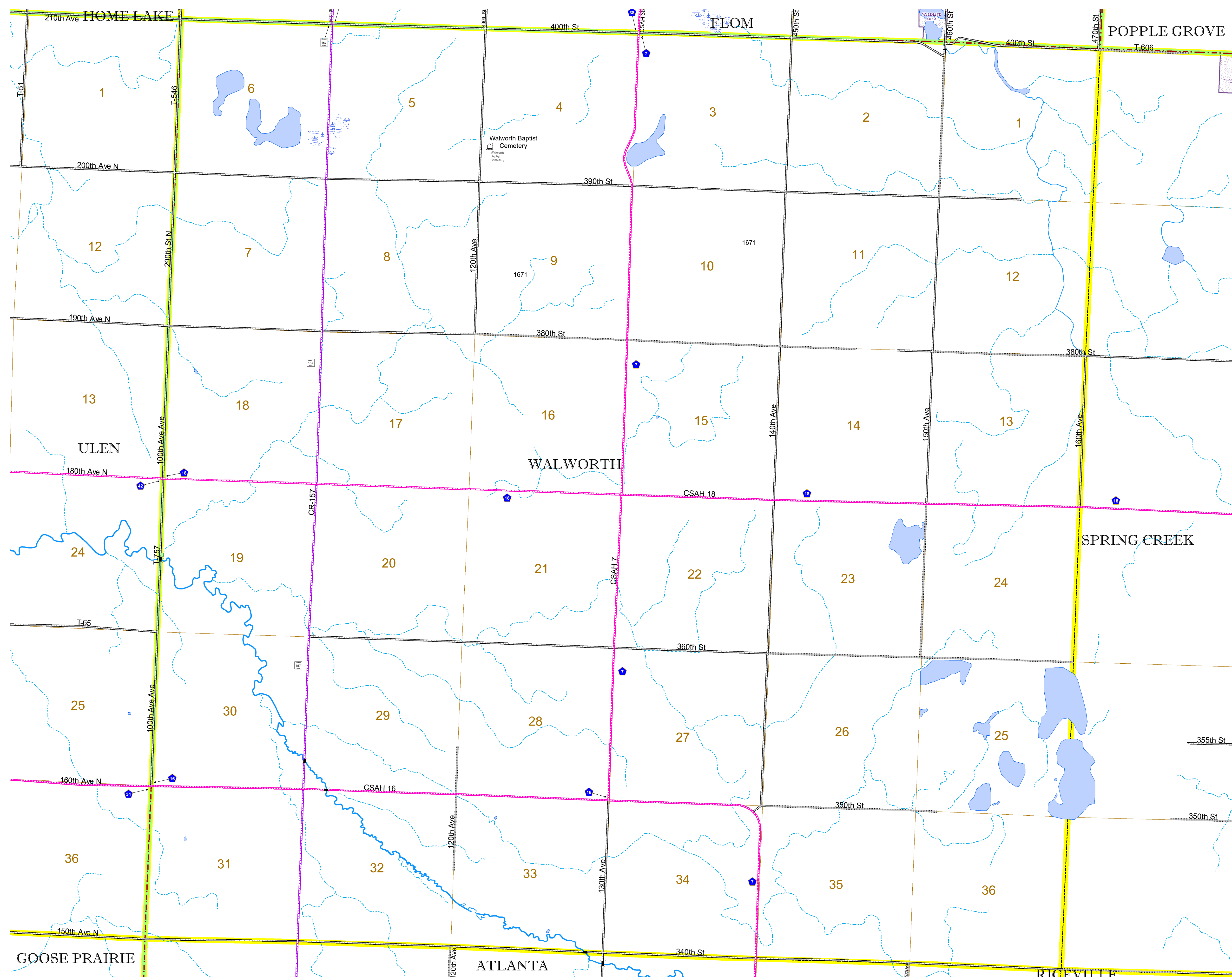


North American Datum
of 1986

ROAD AND ROADWAY FEATURES		AVIATION FEATURES	
INTERSTATE	CONCRETE	COMMERCIAL AIRPORT	GENERAL AIRPORT
US HIGHWAY	BITUMINOUS	AIRSTRIP	SEAPLANE
MN HIGHWAY	GRAVEL	AIRPORT RUNWAY	BOUNDARY FEATURES
COUNTY STATE AID HIGHWAY	DIRT/UNIMPROVED	TRIBAL LAND	STATE OF MINNESOTA
COUNTY ROAD	OTHER	COUNTY	MUNICIPALITY
TOWNSHIP ROAD	UNKNOWN	UNORGANIZED TERRITORY	FEDERAL ADJUSTED URBAN AREA (2014)
UNORGANIZED TERRITORY ROAD		CIVIL TOWNSHIP	CONGRESSIONAL TOWNSHIP
OTHER ROADS		SECTION	MILITARY
Municipal	RAMP OR CONNECTOR	VOYAGEURS NATIONAL PARK	BOUNDARY WATERS CANOE AREA WILDERNESS
Private	INTERSTATE EXIT	STATE PARK	NATIONAL FOREST
National Monument	GREAT RIVER ROAD	NATIONAL AND STATE FOREST	STATE FOREST
National Wildlife Refuge		NATIONAL TRAIL	WILDLIFE REFUGUE AREA
State Park		WILDLIFE MANAGEMENT AREA	HYDROLOGIC FEATURES
Preserve		WILDLIFE REFUGUE AREA	RIVER OR STREAM (PERMANENT)
		WILDLIFE REFUGUE AREA	LAKE, POND OR RESERVOIR
		WILDLIFE REFUGUE AREA	STREAM (INTERMITTENT)
		WILDLIFE REFUGUE AREA	DRAINAGE DITCH
		WILDLIFE REFUGUE AREA	WETLAND
		WILDLIFE REFUGUE AREA	ISLAND OR LAND
		WILDLIFE REFUGUE AREA	REGIONAL WATERSHED



Population (U.S. Census 2010): 87



To request information from this document in an alternative format, call 651-366-4718 or 1-800-657-3774 (Greater Minnesota); 711 or 1-800-627-3529 (Minnesota Relay). You may also send an e-mail to ADRequest.dot@state.mn.us. (Please request at least one week in advance.)