

TOWNSHIP OF GENDORADO

PREPARED BY THE
MINNESOTA DEPARTMENT OF TRANSPORTATION
OFFICE OF TRANSPORTATION SYSTEM MANAGEMENT

IN COOPERATION WITH
U.S. DEPARTMENT OF TRANSPORTATION
FEDERAL HIGHWAY ADMINISTRATION



1 in = 1,600 ft

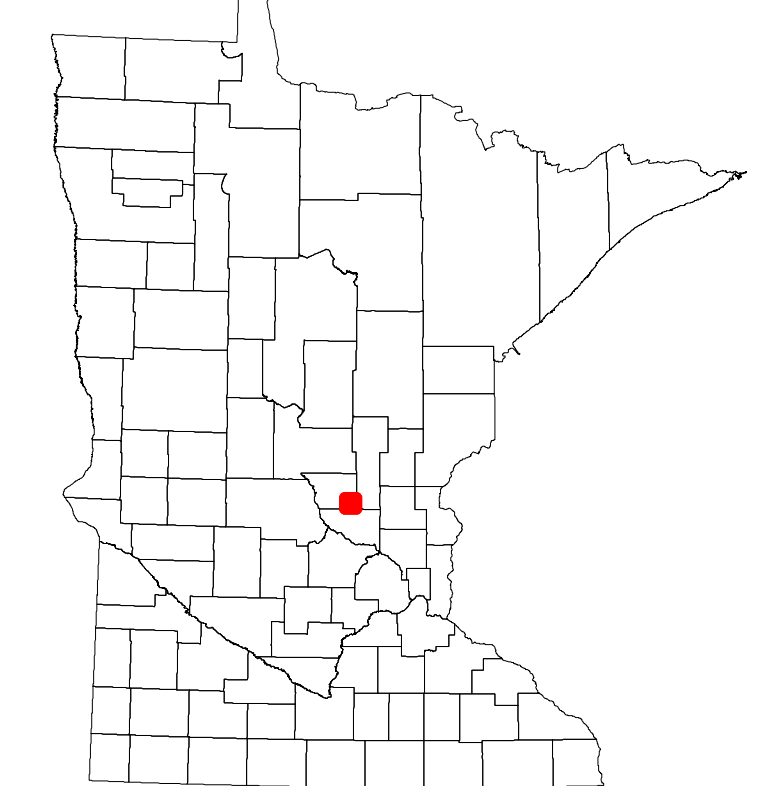
2022



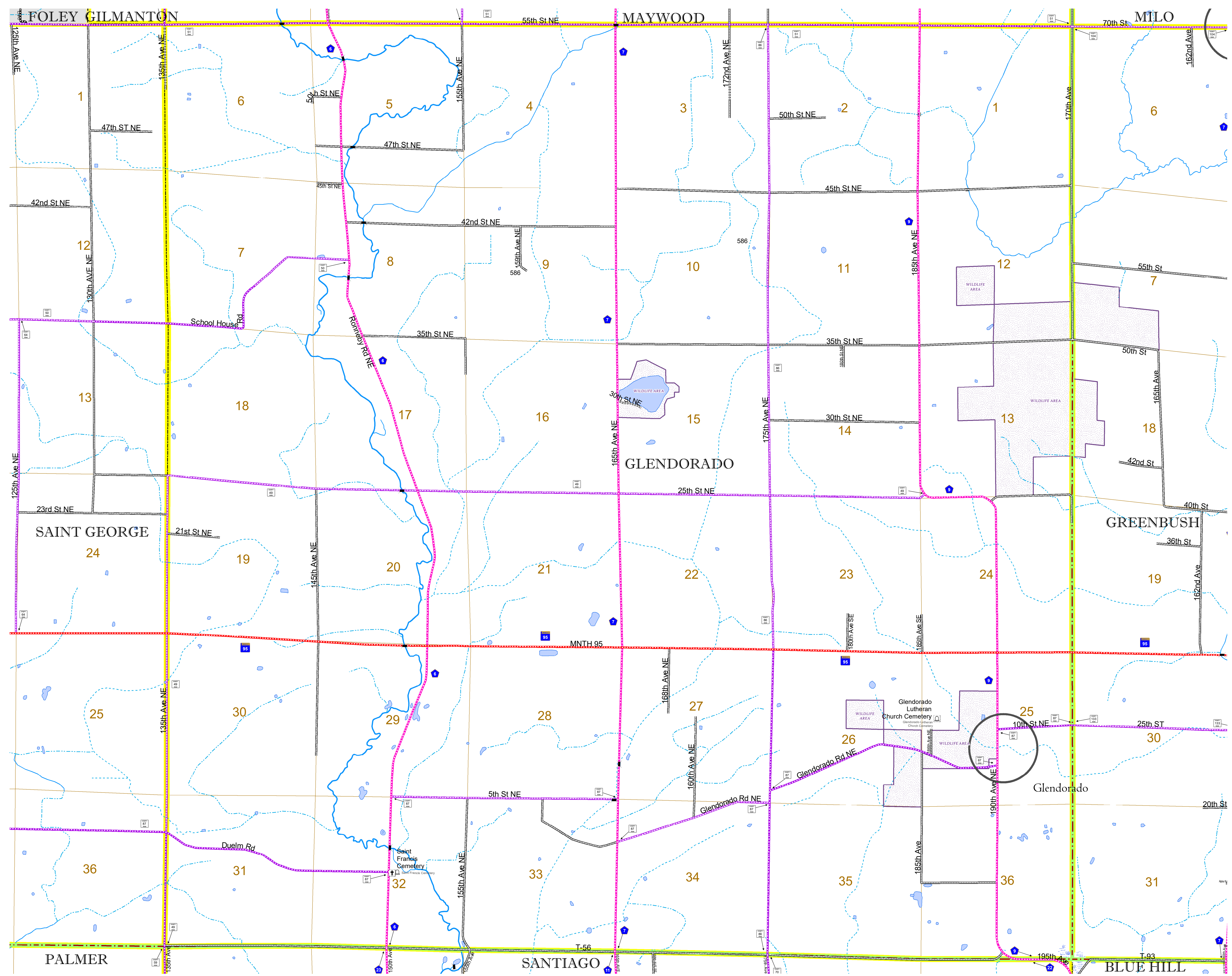
Projection:
Transverse Mercator
NAD 1986
UTM Zone 15

North American Datum
of 1986

ROAD AND ROADWAY FEATURES		BOUNDARY FEATURES	
INTERSTATE	CONCRETE	TRIBAL LAND	STATE OF MINNESOTA
US HIGHWAY	BITUMINOUS	COUNTY	MUNICIPALITY
MN HIGHWAY	GRAVEL	UNINCORPORATED COMMUNITY	SECTION
COUNTY STATE AID HIGHWAY	DIRT/UNIMPROVED	MILITARY	VOYAGEURS NATIONAL PARK
COUNTY ROAD	OTHER	UNINCORPORATED COMMUNITY	BOUNDARY WATERS CANOE AREA WILDERNESS
TOWNSHIP ROAD	UNKNOWN	SECTION	STATE PARK
UNORGANIZED TERRITORY ROAD		MILITARY	REGIONAL PARK
OTHER ROADS		SECTION	NATIONAL FOREST
Municipal	RAMP OR CONNECTOR	SECTION	NATIONAL AND STATE FOREST
Private	INTERSTATE EXIT	SECTION	STATE FOREST
National Monument	GREAT RIVER ROAD	SECTION	NATIONAL TRAIL
National Wildlife	AVIATION FEATURES	SECTION	WILDLIFE REFUGUE AREA
State Park	COMMERCIAL AIRPORT	SECTION	WILDLIFE MANAGEMENT AREA
Preserve	GENERAL AIRPORT	SECTION	HYDROLOGIC FEATURES
	AIRSTRIP	SECTION	RIVER OR STREAM (PERMANENT)
	SEAPLANE	SECTION	LAKE, POND OR RESERVOIR
	AIRPORT RUNWAY	SECTION	STREAM (INTERMITTENT)
		SECTION	DRAINAGE DITCH
		SECTION	WETLAND
		SECTION	ISLAND OR LAND
		SECTION	REGIONAL WATERSHED



Population (U.S. Census 2010): 762



To request information from this document in an alternative format, call 651-366-4718 or 1-800-657-3774 (Greater Minnesota); 711 or 1-800-627-3529 (Minnesota Relay). You may also send an e-mail to ADRequest.dot@state.mn.us. (Please request at least one week in advance.)