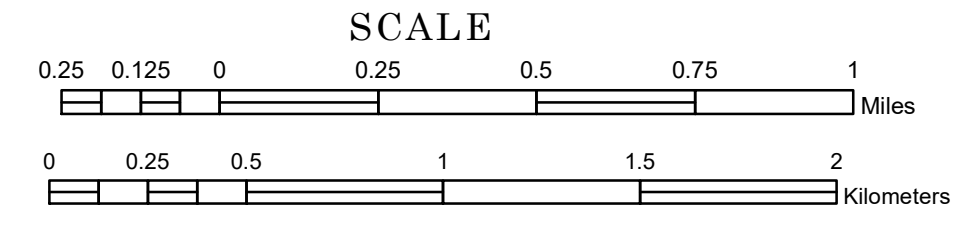


TOWNSHIP OF HOME BROOK

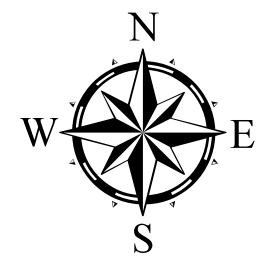
PREPARED BY THE
MINNESOTA DEPARTMENT OF TRANSPORTATION
OFFICE OF TRANSPORTATION SYSTEM MANAGEMENT

IN COOPERATION WITH
U.S. DEPARTMENT OF TRANSPORTATION
FEDERAL HIGHWAY ADMINISTRATION



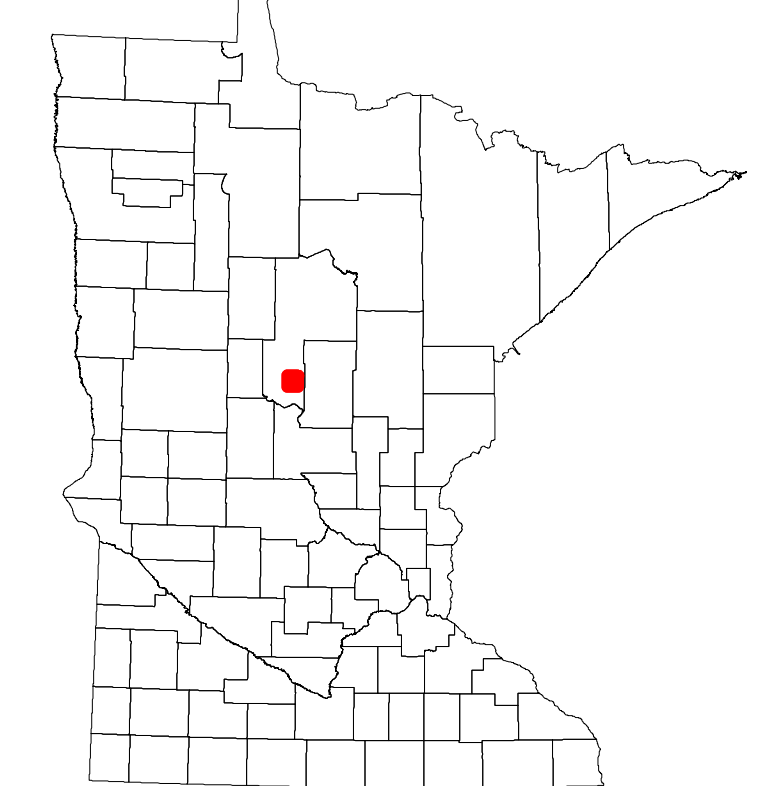
1 in = 1,600 ft
2022

Projection:
Transverse Mercator
NAD 1986
UTM Zone 15

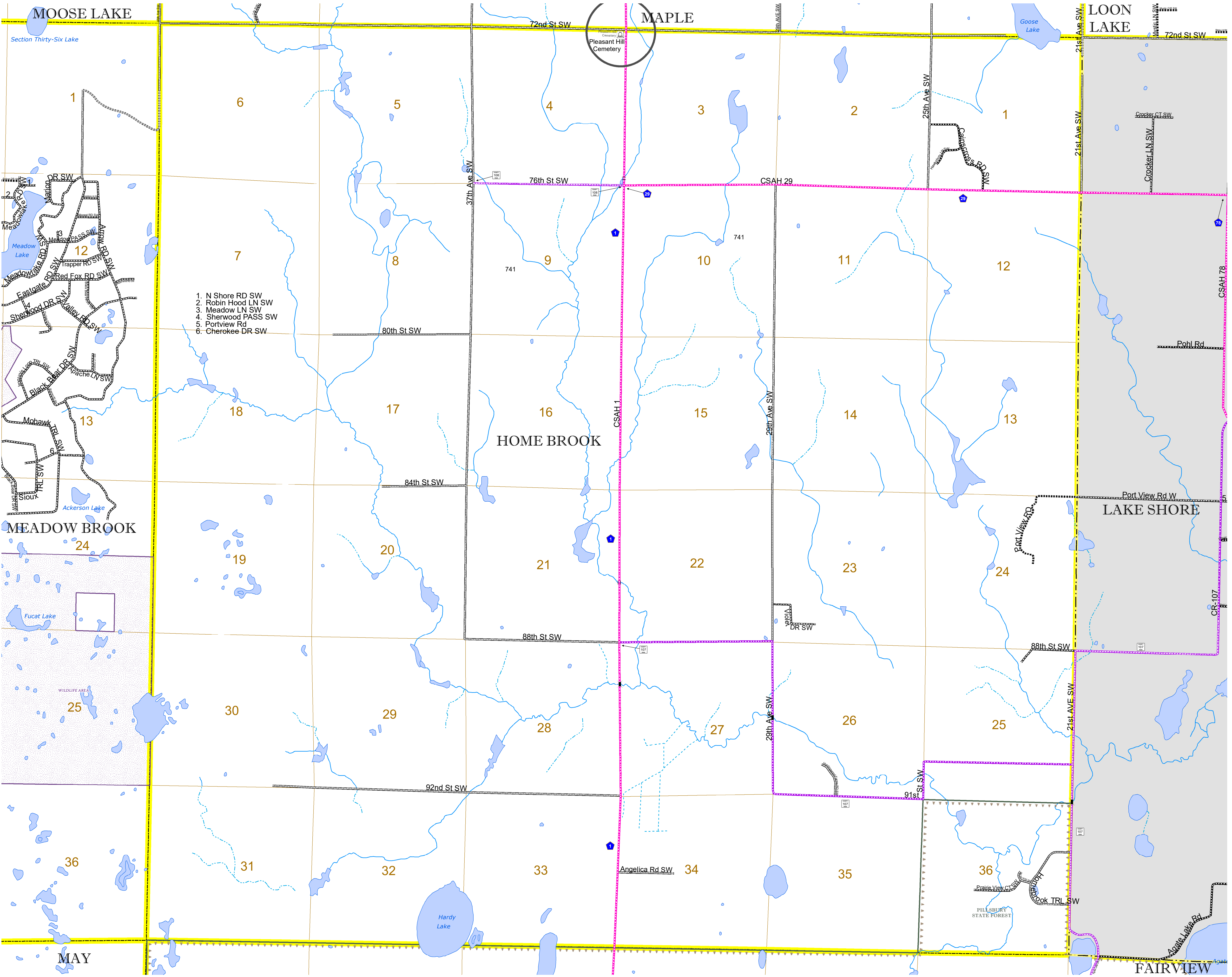


North American Datum
of 1986

ROAD AND ROADWAY FEATURES	
INTERSTATE	CONCRETE
US HIGHWAY	BITUMINOUS
MN HIGHWAY	GRAVEL
COUNTY STATE AID HIGHWAY	DIRT/UNIMPROVED
COUNTY ROAD	OTHER
TOWNSHIP ROAD	UNKNOWN
UNORGANIZED TERRITORY ROAD	
OTHER ROADS	RAMP OR CONNECTOR
Municipal	National Monument
National Park	State Forest
National Wildlife Refuge	State Game
National Forest	State Park
Preserve	
RAILROAD AND RAILWAY FEATURES	
EMPIRE BUILDER STATION (AMTRAK)	COMMERCIAL AIRPORT
NORTHSTAR STATION (COMMUTER)	GENERAL AIRPORT
LIGHT RAIL	AIRSTRIP
BLUE LINE	SEAPLANE
GREEN LINE	AIRPORT RUNWAY
INFRASTRUCTURE FEATURES	
LONG BRIDGE (200' OR GREATER SPAN)	TRIAL LAND
MAJOR BRIDGE (20' TO 200' SPAN)	STATE OF MINNESOTA
MINOR BRIDGE (5' TO 20' SPAN)	COUNTY
DAM	MUNICIPALITY
LOCK AND DAM	UNORGANIZED TERRITORY
	FEDERAL ADJUSTED URBAN AREA (2014)
CITY CENTERS	
STATE CAPITAL	CIVIL TOWNSHIP
COUNTY SEAT	CONGRESSIONAL TOWNSHIP
CITY CENTER	SECTION
UNINCORPORATED COMMUNITY	MILITARY
PUBLIC SERVICE FEATURES	
MNDOT OFFICE	VOYAGEURS NATIONAL PARK
MNDOT TRUCK STATION	BOUNDARY WATERS CANOE AREA WILDERNESS
HIGHWAY PATROL DISTRICT OFFICE	STATE PARK
STATE TRAVEL INFORMATION CENTER	REGIONAL PARK
REST AREA (FULL SERVICE)	NATIONAL FOREST
REST AREA (VAULT TOILET)	NATIONAL AND STATE FOREST
WAYSIDE (VAULT OR PITY TOILET)	STATE FOREST
PARK AND RIDE LOT	NATIONAL TRAIL
PORT OF ENTRY	WILDLIFE REFUGUE AREA
PUBLIC ACCESS POINT	WILDLIFE MANAGEMENT AREA
MN STATE COLLEGE AND UNIVERSITY SYSTEM (MNSCU)	HYDROLOGIC FEATURES
UNIVERSITY OF MN SYSTEM	RIVER OR STREAM (PERMANENT)
FAIRGROUNDS	LAKE, POND OR RESERVOIR
CULTURAL FEATURES	
STATE HISTORICAL MARKER	STREAM (INTERMITTENT)
HISTORIC DISTRICT	DRAINAGE DITCH
HISTORIC SITE	WETLAND
MONUMENT	ISLAND OR LAND
	REGIONAL WATERSHED



Population (U.S. Census 2010): 255



- 1. N Shore RD SW
- 2. Robin Hood LN SW
- 3. Meadow LN SW
- 4. Sherwood PASS SW
- 5. Portview Rd
- 6. Cherokee DR SW

To request information from this document in an alternative format, call 651-366-4718 or 1-800-657-3774 (Greater Minnesota); 711 or 1-800-627-3529 (Minnesota Relay). You may also send an e-mail to ADArequest.dot@state.mn.us. (Please request at least one week in advance.)