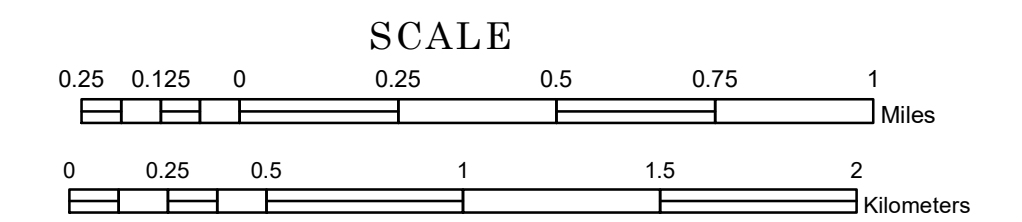


# TOWNSHIP OF INGUADONA

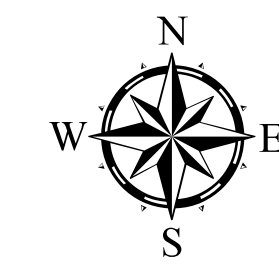
PREPARED BY THE  
MINNESOTA DEPARTMENT OF TRANSPORTATION  
OFFICE OF TRANSPORTATION SYSTEM MANAGEMENT

IN COOPERATION WITH  
U.S. DEPARTMENT OF TRANSPORTATION  
FEDERAL HIGHWAY ADMINISTRATION



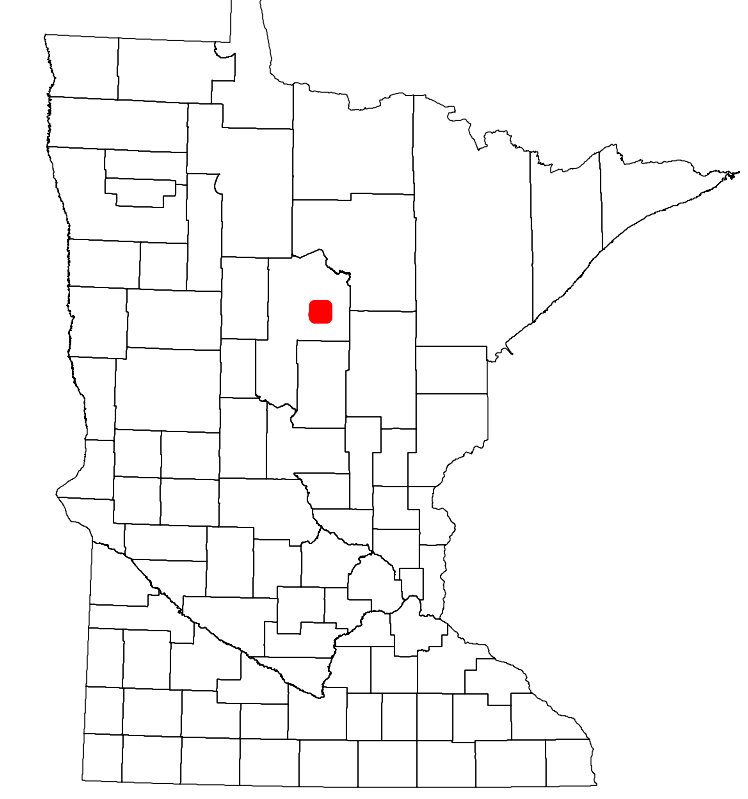
2022

Projection:  
Transverse Mercator  
NAD 1986  
UTM Zone 15

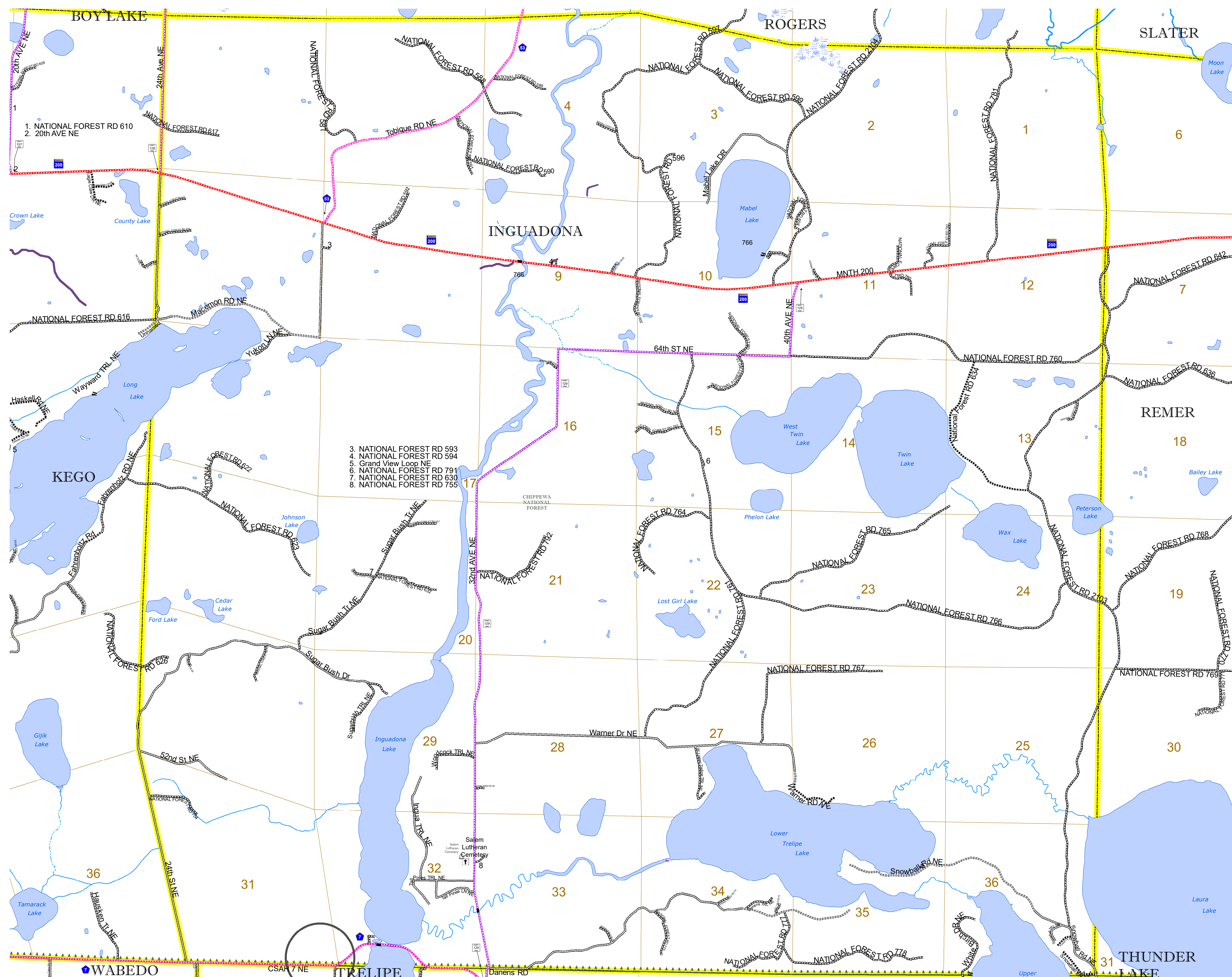


North American Datum  
of 1986

ROAD AND ROADWAY FEATURES		RAILROAD AND RAILWAY FEATURES		AVIATION FEATURES		BOUNDARY FEATURES	
INTERSTATE	[Symbol]	EMPIRE BUILDER STATION (AMTRAK)	[Symbol]	COMMERCIAL AIRPORT	[Symbol]	TRIBAL LAND	[Symbol]
US HIGHWAY	[Symbol]	NORTHSTAR STATION (COMMUTER)	[Symbol]	GENERAL AIRPORT	[Symbol]	STATE OF MINNESOTA	[Symbol]
MN HIGHWAY	[Symbol]	LIGHT RAIL	[Symbol]	AIRSTRIP	[Symbol]	COUNTY	[Symbol]
COUNTY STATE AID HIGHWAY	[Symbol]	BLUE LINE	[Symbol]	SEAPLANE	[Symbol]	MUNICIPALITY	[Symbol]
COUNTY ROAD	[Symbol]	GREEN LINE	[Symbol]	AIRPORT RUNWAY	[Symbol]	UNINCORPORATED TERRITORY	[Symbol]
TOWNSHIP ROAD	[Symbol]	LONG BRIDGE (200' OR GREATER SPAN)	[Symbol]	LOCK AND DAM	[Symbol]	FEDERAL ADJUSTED URBAN AREA (2014)	[Symbol]
UNORGANIZED TERRITORY ROAD	[Symbol]	MAJOR BRIDGE (20' TO 200' SPAN)	[Symbol]	CITY CENTERS	[Symbol]	CIVIL TOWNSHIP	[Symbol]
OTHER ROADS	[Symbol]	MINOR BRIDGE (5' TO 20' SPAN)	[Symbol]	STATE CAPITAL	[Symbol]	CONGRESSIONAL TOWNSHIP	[Symbol]
Municipal	[Symbol]	DAM	[Symbol]	COUNTY SEAT	[Symbol]	SECTION	[Symbol]
Private	[Symbol]	LOCK AND DAM	[Symbol]	CITY CENTER	[Symbol]	MILITARY	[Symbol]
National Monument	[Symbol]	STATE CAPITAL	[Symbol]	UNINCORPORATED COMMUNITY	[Symbol]	VOYAGEURS NATIONAL PARK	[Symbol]
National Park	[Symbol]	MNDOT OFFICE	[Symbol]			BOUNDARY WATERS CANOE AREA WILDERNESS	[Symbol]
National Wildlife Refuge	[Symbol]	MNDOT TRUCK STATION	[Symbol]			STATE PARK	[Symbol]
State Park	[Symbol]	HIGHWAY PATROL DISTRICT OFFICE	[Symbol]			REGIONAL PARK	[Symbol]
Preserve	[Symbol]	STATE TRAVEL INFORMATION CENTER	[Symbol]			NATIONAL FOREST	[Symbol]
		REST AREA (FULL SERVICE)	[Symbol]			NATIONAL AND STATE FOREST	[Symbol]
		REST AREA (VAULT TOILET)	[Symbol]			STATE FOREST	[Symbol]
		WAYSIDE (VAULT OR PVI TOILET)	[Symbol]			NATIONAL TRAIL	[Symbol]
		PARK AND RIDE LOT	[Symbol]			WILDLIFE REFUGUE AREA	[Symbol]
		PORT OF ENTRY	[Symbol]			WILDLIFE MANAGEMENT AREA	[Symbol]
		PUBLIC ACCESS POINT	[Symbol]			HYDROLOGIC FEATURES	[Symbol]
		MN STATE COLLEGE AND UNIVERSITY SYSTEM (MNSCU)	[Symbol]			RIVER OR STREAM (PERENNIAL)	[Symbol]
		UNIVERSITY OF MN SYSTEM	[Symbol]			LAKE, POND OR RESERVOIR	[Symbol]
		FAIRGROUNDS	[Symbol]			STREAM (INTERMITTENT)	[Symbol]
						DRAINAGE DITCH	[Symbol]
						WETLAND	[Symbol]
						ISLAND OR LAND	[Symbol]
						REGIONAL WATERSHED	[Symbol]



Population (U.S. Census 2010): 190



3. NATIONAL FOREST RD 593
4. NATIONAL FOREST RD 594
5. Grand View Loop NE
6. NATIONAL FOREST RD 791
7. NATIONAL FOREST RD 630
8. NATIONAL FOREST RD 755

To request information from this document in an alternative format, call 651-366-4718 or 1-800-657-3774 (Greater Minnesota); 711 or 1-800-627-3529 (Minnesota Relay). You may also send an e-mail to ADARquest.dot@state.mn.us. (Please request at least one week in advance.)