

# TOWNSHIP OF TORREY

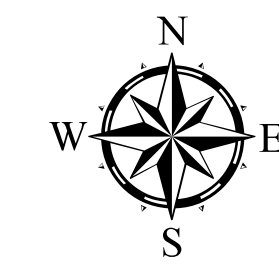
PREPARED BY THE  
MINNESOTA DEPARTMENT OF TRANSPORTATION  
OFFICE OF TRANSPORTATION SYSTEM MANAGEMENT

IN COOPERATION WITH  
U.S. DEPARTMENT OF TRANSPORTATION  
FEDERAL HIGHWAY ADMINISTRATION



2022

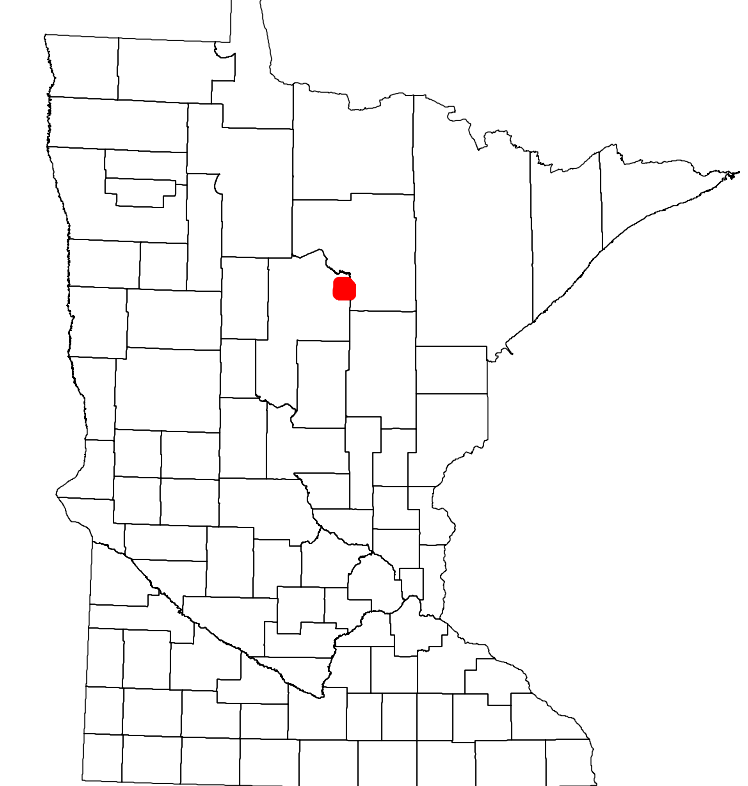
Projection:  
Transverse Mercator  
NAD 1986  
UTM Zone 15



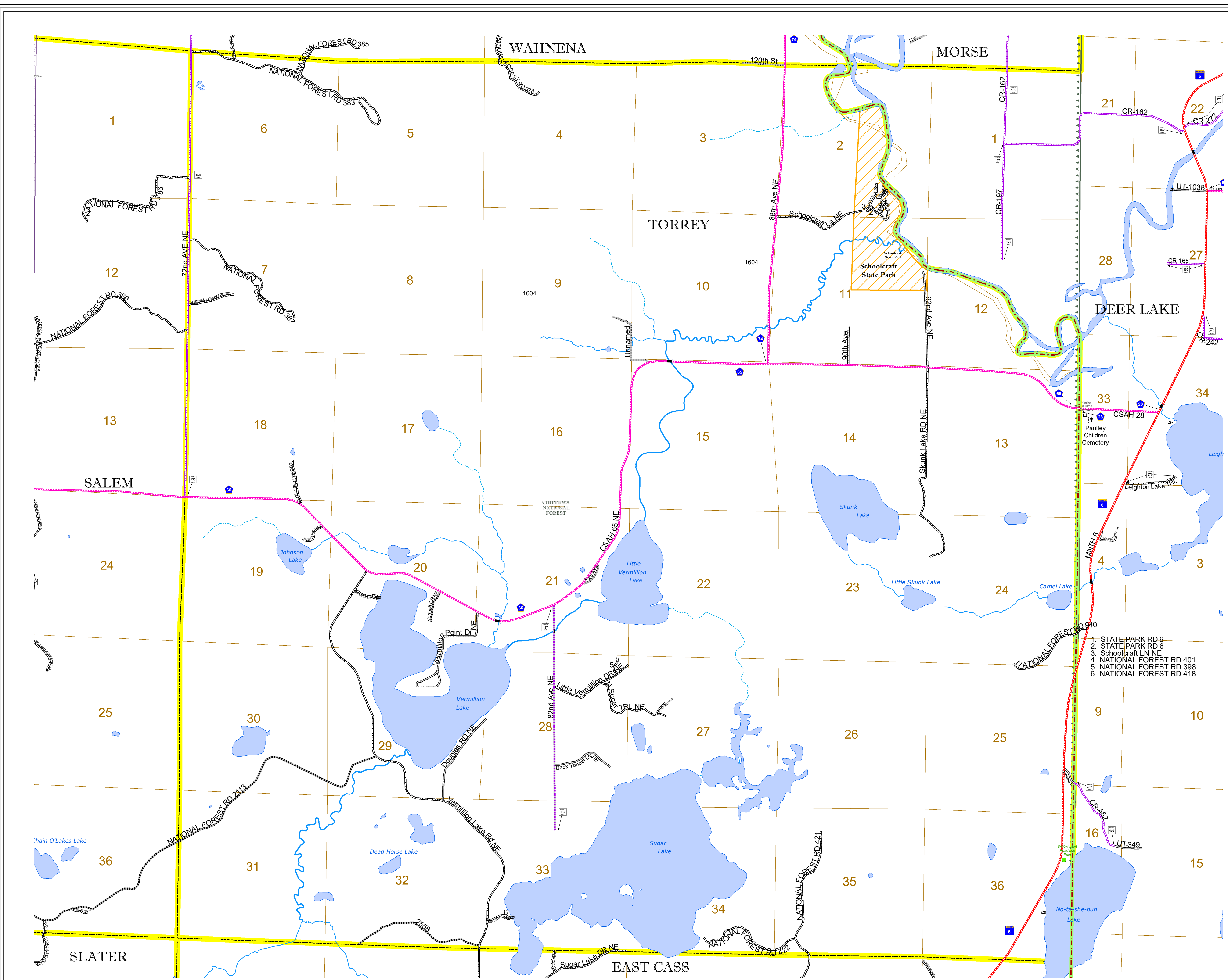
North American Datum  
of 1986

ROAD AND ROADWAY FEATURES		BOUNDARY FEATURES	
INTERSTATE	CONCRETE	TRIBAL LAND	STATE OF MINNESOTA
US HIGHWAY	BITUMINOUS	COUNTY	MUNICIPALITY
MN HIGHWAY	GRAVEL	UNINCORPORATED TOWNSHIP	CIVIL TOWNSHIP
COUNTY STATE AID HIGHWAY	DIRT/UNIMPROVED	CONGRESSIONAL TOWNSHIP	SECTION
COUNTY ROAD	OTHER	MILITARY	VOYAGEURS NATIONAL PARK
TOWNSHIP ROAD	UNKNOWN	UNINCORPORATED COMMUNITY	BOUNDARY WATERS CANOE AREA WILDERNESS
UNORGANIZED TERRITORY ROAD			STATE PARK
OTHER ROADS			REGIONAL PARK
Municipal	RAMP OR CONNECTOR		NATIONAL FOREST
Private	INTERSTATE EXIT		NATIONAL AND STATE FOREST
National Monument			STATE FOREST
National Wildlife			NATIONAL TRAIL
State Game			WILDLIFE REFUGUE AREA
State Park			WILDLIFE MANAGEMENT AREA
Preserve			HYDROLOGIC FEATURES
			RIVER OR STREAM (PERMANENT)
			LAKE, POND OR RESERVOIR
			STREAM (INTERMITTENT)
			DRAINAGE DITCH
			WETLAND
			ISLAND OR LAND
			REGIONAL WATERSHED

1. STATE PARK RD 9
2. STATE PARK RD 6
3. Schoolcraft LN NE
4. NATIONAL FOREST RD 401
5. NATIONAL FOREST RD 398
6. NATIONAL FOREST RD 418



Population (U.S. Census 2010): 155



To request information from this document in an alternative format, call 651-366-4718 or 1-800-657-3774 (Greater Minnesota); 711 or 1-800-627-3529 (Minnesota Relay). You may also send an e-mail to ADAREquest.dot@state.mn.us. (Please request at least one week in advance.)