

TOWNSHIP OF LONG LOST LAKE

PREPARED BY THE
MINNESOTA DEPARTMENT OF TRANSPORTATION
OFFICE OF TRANSPORTATION SYSTEM MANAGEMENT

IN COOPERATION WITH
U.S. DEPARTMENT OF TRANSPORTATION
FEDERAL HIGHWAY ADMINISTRATION



1 in = 1,600 ft

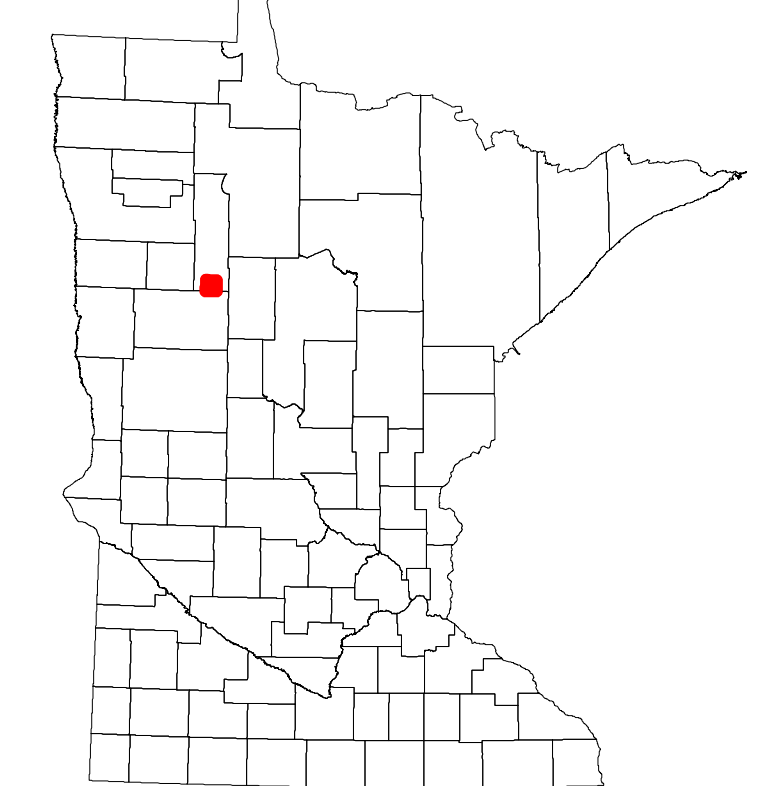
2022

Projection:
Transverse Mercator
NAD 1986
UTM Zone 15

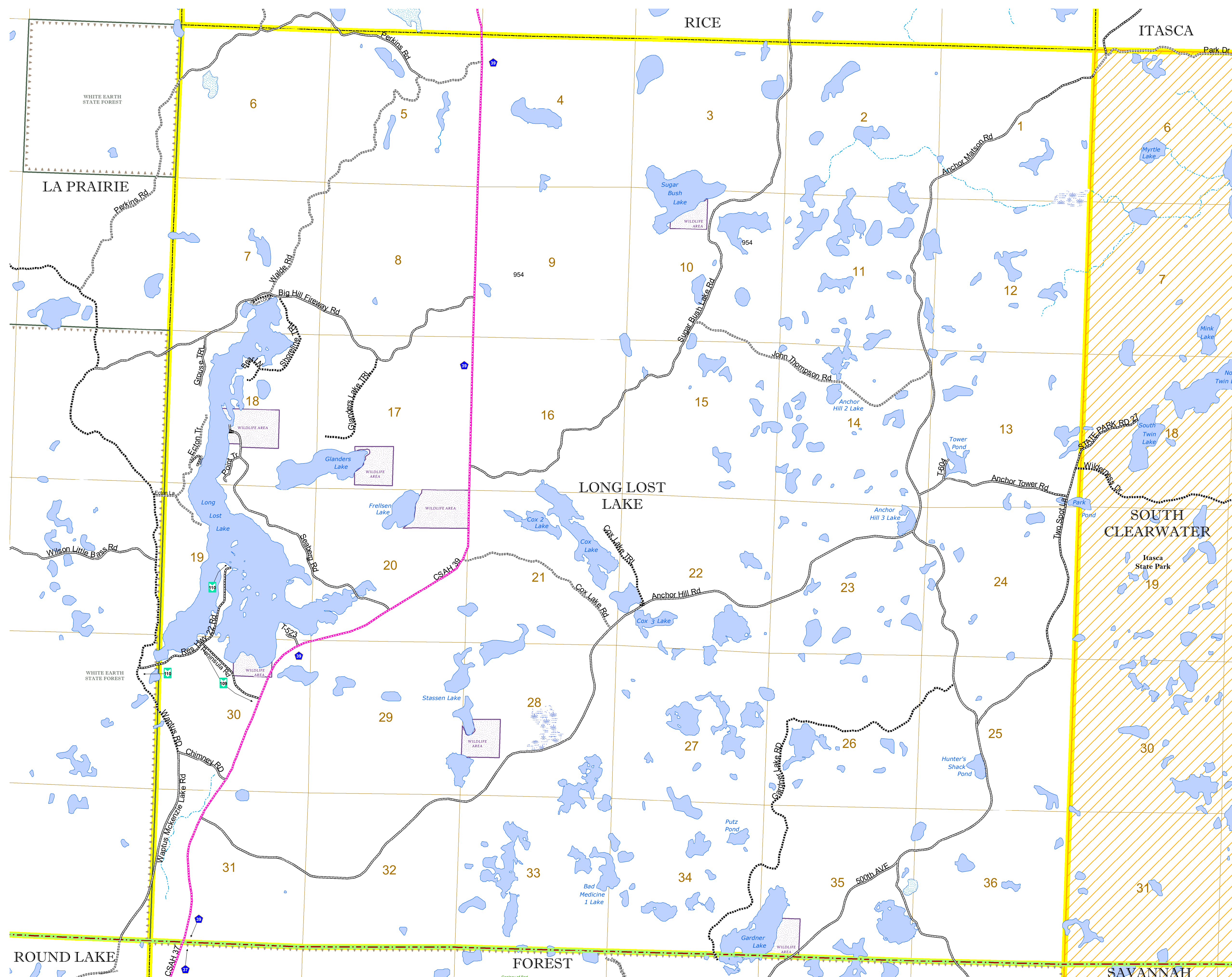


North American Datum
of 1986

ROAD AND ROADWAY FEATURES		BOUNDARY FEATURES	
INTERSTATE	CONCRETE	TRIBAL LAND	STATE OF MINNESOTA
US HIGHWAY	BITUMINOUS	COUNTY	MUNICIPALITY
MN HIGHWAY	GRAVEL	UNINCORPORATED TOWNSHIP	SECTION
COUNTY STATE AID HIGHWAY	DIRT/UNIMPROVED	MILITARY	VOYAGEURS NATIONAL PARK
COUNTY ROAD	OTHER	MNDOT OFFICE	BOUNDARY WATERS CANOE AREA WILDERNESS
TOWNSHIP ROAD	UNKNOWN	HIGHWAY TRUCK STATION	STATE PARK
UNORGANIZED TERRITORY ROAD		HIGHWAY PATROL DISTRICT OFFICE	REGIONAL PARK
OTHER ROADS		STATE TRAVEL INFORMATION CENTER	NATIONAL FOREST
Municipal		REST AREA (Full Service)	NATIONAL AND STATE FOREST
Private		REST AREA (Vault Toilet)	STATE FOREST
National Monument		WAYSIDE (Vault or Pit Toilet)	NATIONAL TRAIL
National Wildlife		PARK AND RIDE LOT	WILDLIFE REFUGUE AREA
State Park		PORT OF ENTRY	WILDLIFE MANAGEMENT AREA
Preserve		PUBLIC ACCESS POINT	HYDROLOGIC FEATURES
		MN STATE COLLEGE AND UNIVERSITY SYSTEM (MNSCU)	RIVER OR STREAM (PERENNIAL)
		UNIVERSITY OF MN SYSTEM	LAKE, POND OR RESERVOIR
		FAIRGROUNDS	STREAM (INTERMITTENT)
			DRAINAGE DITCH
			WETLAND
			ISLAND OR LAND
			REGIONAL WATERSHED



Population (U.S. Census 2010): 43



To request information from this document in an alternative format, call 651-366-4718 or 1-800-657-3774 (Greater Minnesota); 711 or 1-800-627-3529 (Minnesota Relay). You may also send an e-mail to ADAREquest.dot@state.mn.us. (Please request at least one week in advance.)