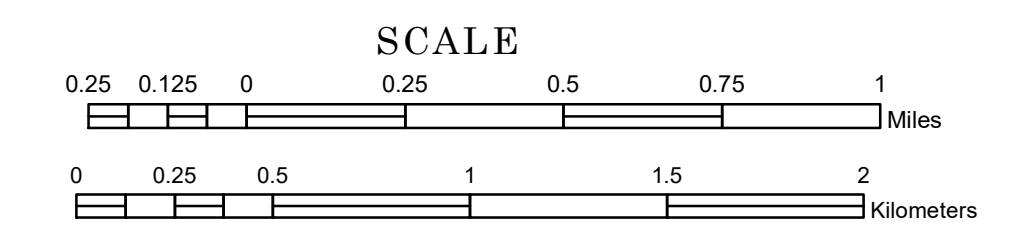


TOWNSHIP OF DELTON

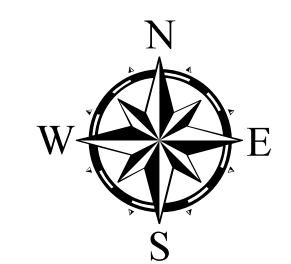
PREPARED BY THE
MINNESOTA DEPARTMENT OF TRANSPORTATION
OFFICE OF TRANSPORTATION SYSTEM MANAGEMENT

IN COOPERATION WITH
U.S. DEPARTMENT OF TRANSPORTATION
FEDERAL HIGHWAY ADMINISTRATION



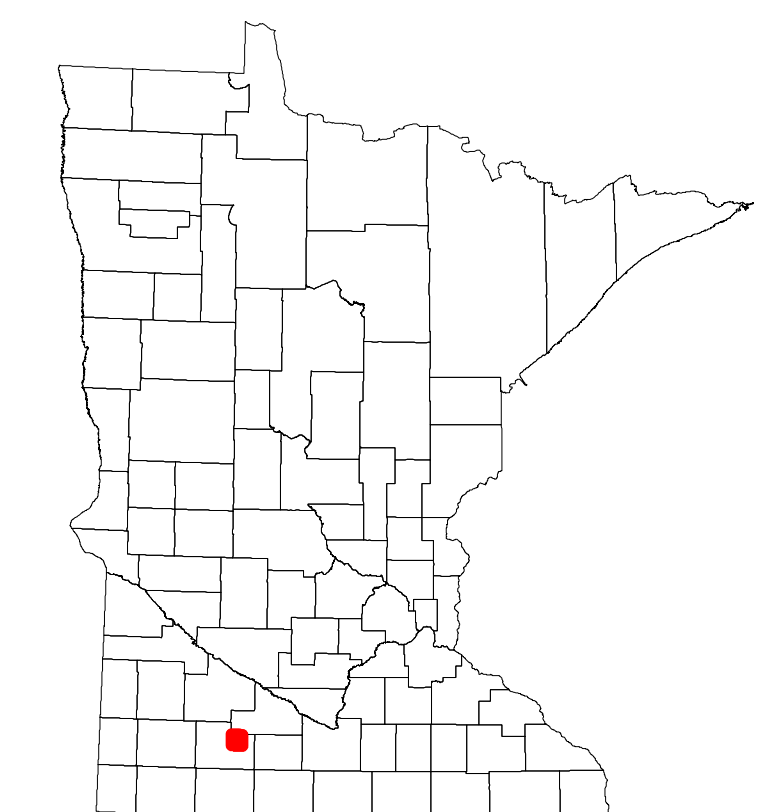
2023

Projection:
Transverse Mercator
NAD 1986
UTM Zone 15

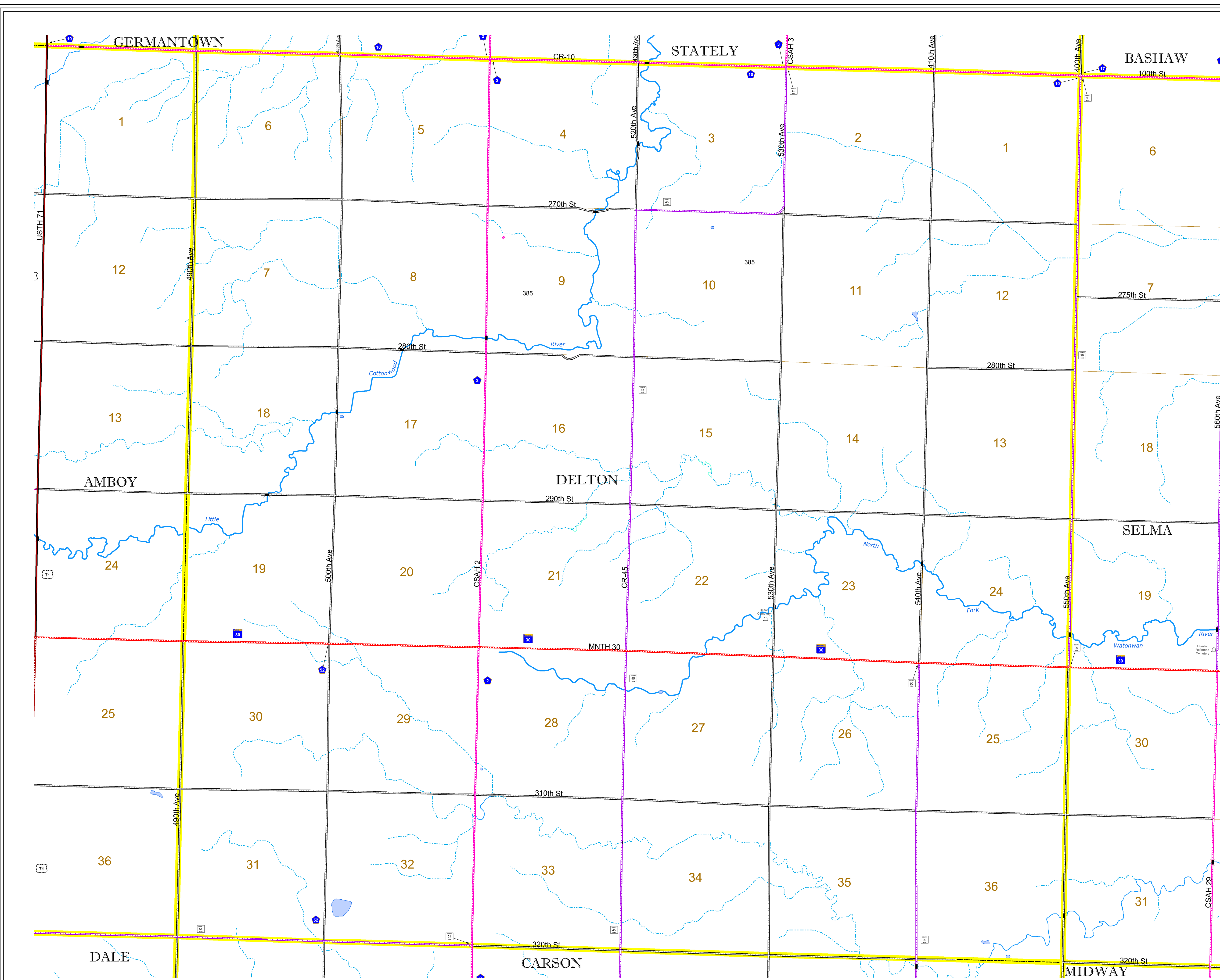


North American Datum
of 1986

ROAD AND ROADWAY FEATURES		AVIATION FEATURES	
INTERSTATE	CONCRETE	COMMERCIAL AIRPORT	GENERAL AIRPORT
US HIGHWAY	BITUMINOUS	NORTHSTAR STATION (COMMUTER)	AIRSTRIP
MN HIGHWAY	GRAVEL	SEAPLANE	AIRPORT RUNWAY
COUNTY STATE AID HIGHWAY	DIRT/UNIMPROVED	BLUE LINE	GREEN LINE
COUNTY ROAD	OTHER	LONG BRIDGE (200' OR GREATER SPAN)	MAJOR BRIDGE (20' TO 200' SPAN)
TOWNSHIP ROAD	UNKNOWN	MINOR BRIDGE (5' TO 20' SPAN)	DAM
UNORGANIZED TERRITORY ROAD		LOCK AND DAM	
OTHER ROADS			
Municipal	Private	National Monument	State Forest
Nature Service	National Park	National Wildlife	State Game
Mulvan	National Forest	State Park	Preserve
RAILROAD AND RAILWAY FEATURES		BOUNDARY FEATURES	
EMPIRE BUILDER STATION (AMTRAK)	GENERAL AIRPORT	TRIBAL LAND	STATE OF MINNESOTA
NORTHSTAR STATION (COMMUTER)	AIRSTRIP	COUNTY	MUNICIPALITY
LIGHT RAIL	SEAPLANE	UNORGANIZED TERRITORY	FEDERAL ADJUSTED URBAN AREA (2014)
BLUE LINE	AIRPORT RUNWAY	CIVIL TOWNSHIP	CONGRESSIONAL TOWNSHIP
GREEN LINE		SECTION	MILITARY
INFRASTRUCTURE FEATURES		VOYAGEURS NATIONAL PARK	
LONG BRIDGE (200' OR GREATER SPAN)	MAJOR BRIDGE (20' TO 200' SPAN)	BOUNDARY WATERS CANOE AREA WILDERNESS	
MINOR BRIDGE (5' TO 20' SPAN)	DAM	STATE PARK	
LOCK AND DAM		REGIONAL PARK	
CITY CENTERS		NATIONAL FOREST	
STATE CAPITAL	COUNTY SEAT	NATIONAL AND STATE FOREST	
CITY CENTER	UNINCORPORATED COMMUNITY	STATE FOREST	
PUBLIC SERVICE FEATURES		WILDLIFE REFUGUE AREA	
MNDOT OFFICE	HIGHWAY PATROL DISTRICT OFFICE	WILDLIFE MANAGEMENT AREA	
STATE TRAVEL INFORMATION CENTER	REST AREA (VAULT TOILET)	HYDROLOGIC FEATURES	
REST AREA (VAULT TOILET)	WAYSIDE (VAULT OR PIT TOILET)	RIVER OR STREAM (PERMANENT)	
PARK AND RIDE LOT	PORT OF ENTRY	LAKE, POND OR RESERVOIR	
PUBLIC ACCESS POINT	MN STATE COLLEGE AND UNIVERSITY SYSTEM (MNSCU)	STREAM (INTERMITTENT)	
UNIVERSITY OF MN SYSTEM	FAIRGROUNDS	DRAINAGE DITCH	
CULTURAL FEATURES		WETLAND	
STATE HISTORICAL MARKER	HISTORIC DISTRICT	ISLAND OR LAND	
HISTORIC SITE	MONUMENT	REGIONAL WATERSHED	



Population (U.S. Census 2010): 123



To request information from this document in an alternative format, call 651-366-4718 or 1-800-657-3774 (Greater Minnesota); 711 or 1-800-627-3529 (Minnesota Relay). You may also send an e-mail to ADRequest.dot@state.mn.us. (Please request at least one week in advance.)