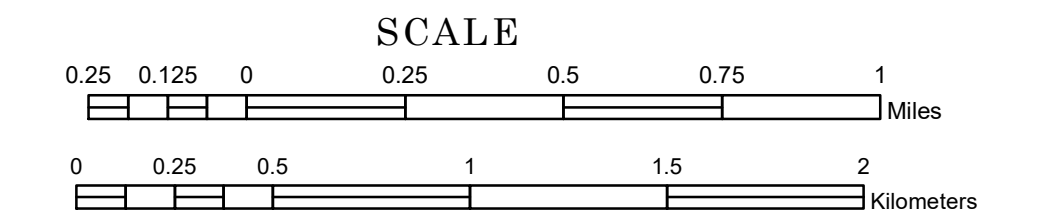


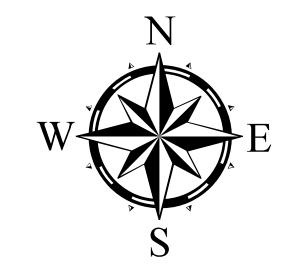
TOWNSHIP OF MARSHAN

PREPARED BY THE
MINNESOTA DEPARTMENT OF TRANSPORTATION
OFFICE OF TRANSPORTATION SYSTEM MANAGEMENT

IN COOPERATION WITH
U.S. DEPARTMENT OF TRANSPORTATION
FEDERAL HIGHWAY ADMINISTRATION



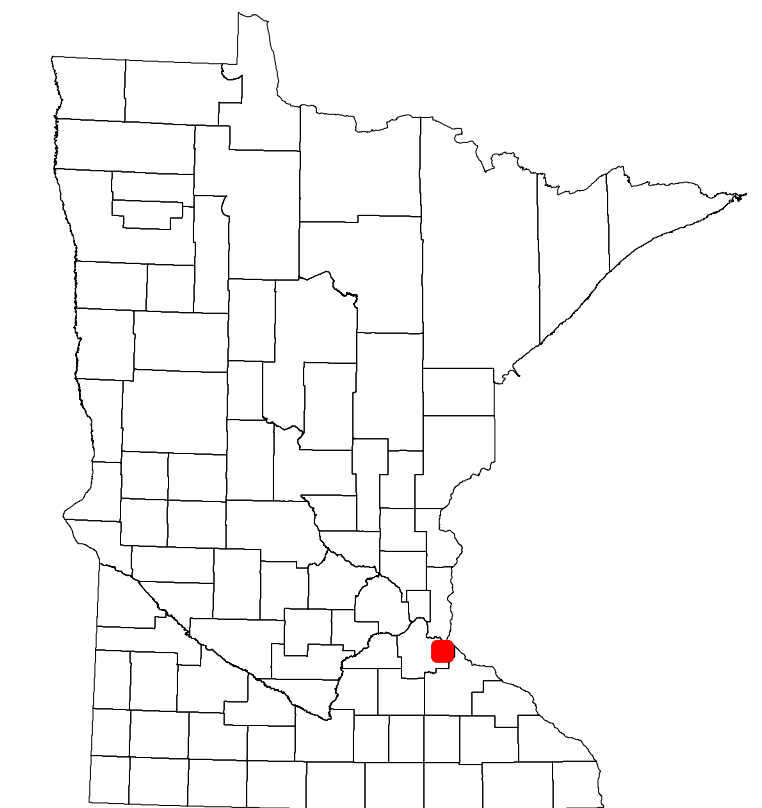
1 in = 1,600 ft
2023



Projection:
Transverse Mercator
NAD 1986
UTM Zone 15

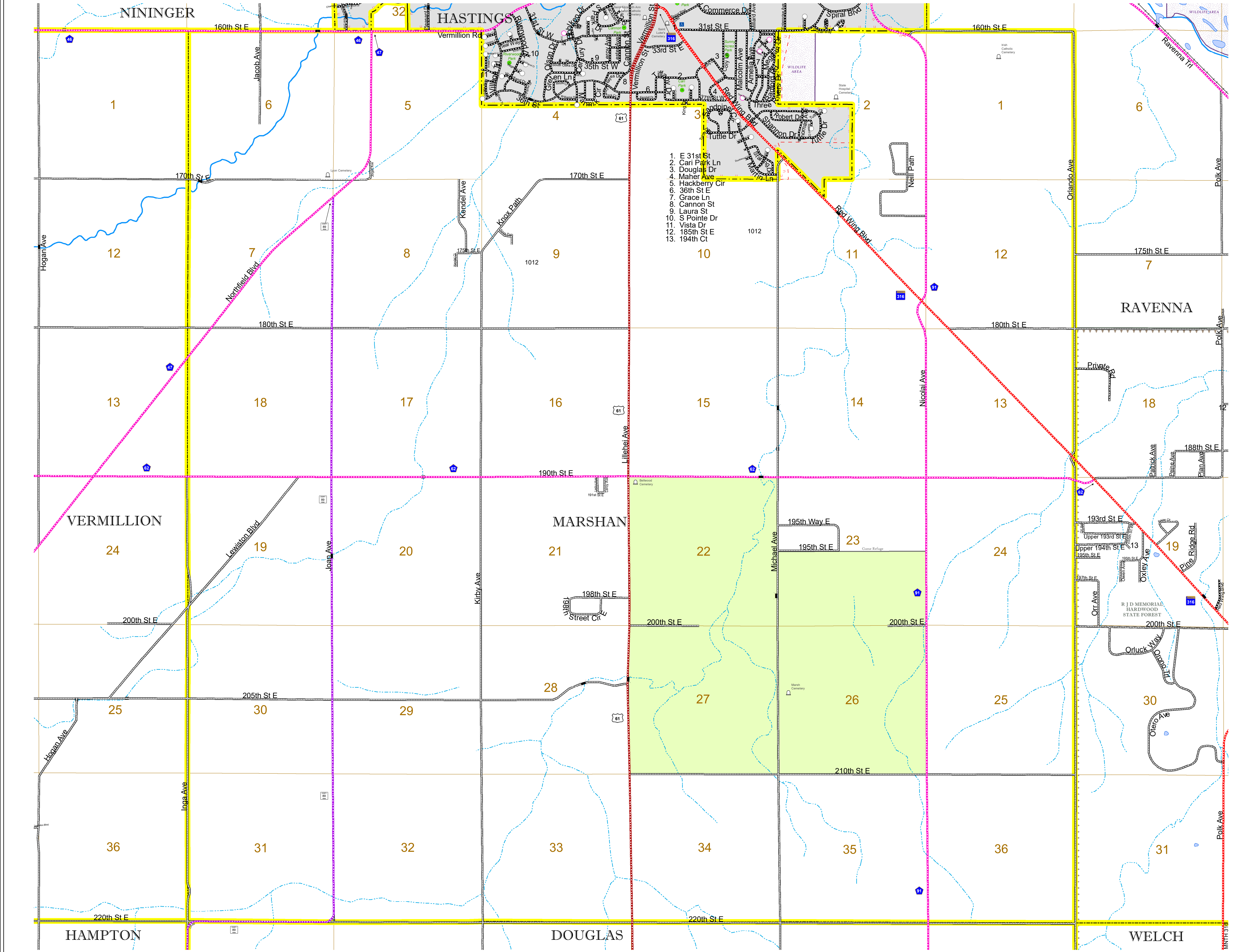
North American Datum of 1986

ROAD AND ROADWAY FEATURES		BOUNDARY FEATURES	
INTERSTATE		CONCRETE	
US HIGHWAY		BITUMINOUS	
MN HIGHWAY		GRAVEL	
COUNTY STATE AID HIGHWAY		DIRT/UNIMPROVED	
COUNTY ROAD		OTHER	
TOWNSHIP ROAD		UNKNOWN	
UNORGANIZED TERRITORY ROAD			
OTHER ROADS		RAMP OR CONNECTOR	
Municipal		INTERSTATE EXIT	
Private		GENERAL AIRPORT	
National Monument		AIRSTRIP	
National Park		SEAPLANE	
National Wildlife		AIRPORT RUNWAY	
State Park			
Preserve			
RAILROAD AND RAILWAY FEATURES		AVIATION FEATURES	
EMPIRE BUILDER STATION (AMTRAK)		COMMERCIAL AIRPORT	
NORTHSTAR STATION (COMPUTER)		GENERAL AIRPORT	
LIGHT RAIL		AIRSTRIP	
BLUE LINE		SEAPLANE	
GREEN LINE		AIRPORT RUNWAY	
INFRASTRUCTURE FEATURES		BOUNDARY FEATURES	
LONG BRIDGE (200' OR GREATER SPAN)		TRIBAL LAND	
MAJOR BRIDGE (20' TO 200' SPAN)		STATE OF MINNESOTA	
MINOR BRIDGE (5' TO 20' SPAN)		COUNTY	
DAM		MUNICIPALITY	
LOCK-AND-DAM		UNORGANIZED TERRITORY	
CITY CENTERS		FEDERAL ADJUSTED URBAN AREA (2014)	
STATE CAPITAL		CIVIL TOWNSHIP	
COUNTY SEAT		CONGRESSIONAL TOWNSHIP	
CITY CENTER		SECTION	
UNINCORPORATED COMMUNITY		MILITARY	
PUBLIC SERVICE FEATURES		VOYAGEURS NATIONAL PARK	
MNDOT OFFICE		BOUNDARY WATERS CANOE AREA WILDERNESS	
MNDOT TRUCK STATION		STATE PARK	
HIGHWAY PATROL DISTRICT OFFICE		REGIONAL PARK	
STATE TRAVEL INFORMATION CENTER		NATIONAL FOREST	
REST AREA (Full Service)		NATIONAL AND STATE FOREST	
REST AREA (Vault Toilet)		STATE FOREST	
WAYSIDE (Vault or Potty Toilet)		WILDLIFE REFUGUE AREA	
PARK AND RIDE LOT		WILDLIFE MANAGEMENT AREA	
PORT OF ENTRY		HYDROLOGIC FEATURES	
PUBLIC ACCESS POINT		RIVER OR STREAM (Perennial)	
MN STATE COLLEGE AND UNIVERSITY SYSTEM (MNSCU)		LAKE, POND OR RESERVOIR	
UNIVERSITY OF MN SYSTEM		STREAM (Intermittent)	
FAIRGROUNDS		DRAINAGE DITCH	
CULTURAL FEATURES		WETLAND	
STATE HISTORICAL MARKER		ISLAND OR LAND	
HISTORIC DISTRICT		REGIONAL WATERSHED	
HISTORIC SITE			
MONUMENT			



Population (U.S. Census 2010): 1106

1. E 31st St
2. Cari Park Ln
3. Douglas Dr
4. Maher Ave
5. Hackberry Cir
6. 36th St E
7. Grace Ln
8. Cannon St
9. Laura St
10. S Pointe Dr
11. Vista Dr
12. 185th St E
13. 194th Ct



To request information from this document in an alternative format, call 651-366-4718 or 1-800-657-3774 (Greater Minnesota); 711 or 1-800-627-3529 (Minnesota Relay). You may also send an e-mail to ADarequest.dot@state.mn.us. (Please request at least one week in advance.)