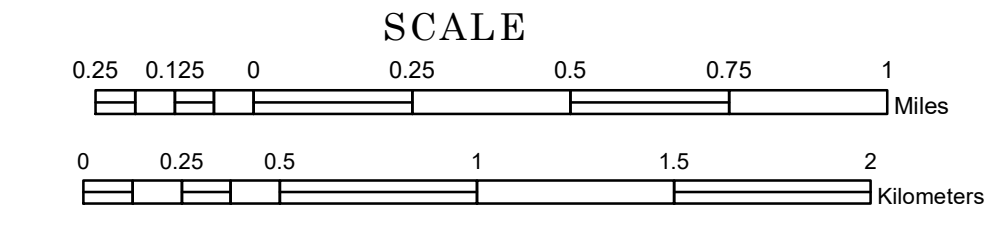


TOWNSHIP OF BARBER

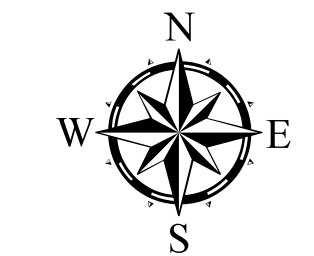
PREPARED BY THE
MINNESOTA DEPARTMENT OF TRANSPORTATION
OFFICE OF TRANSPORTATION SYSTEM MANAGEMENT

IN COOPERATION WITH
U.S. DEPARTMENT OF TRANSPORTATION
FEDERAL HIGHWAY ADMINISTRATION



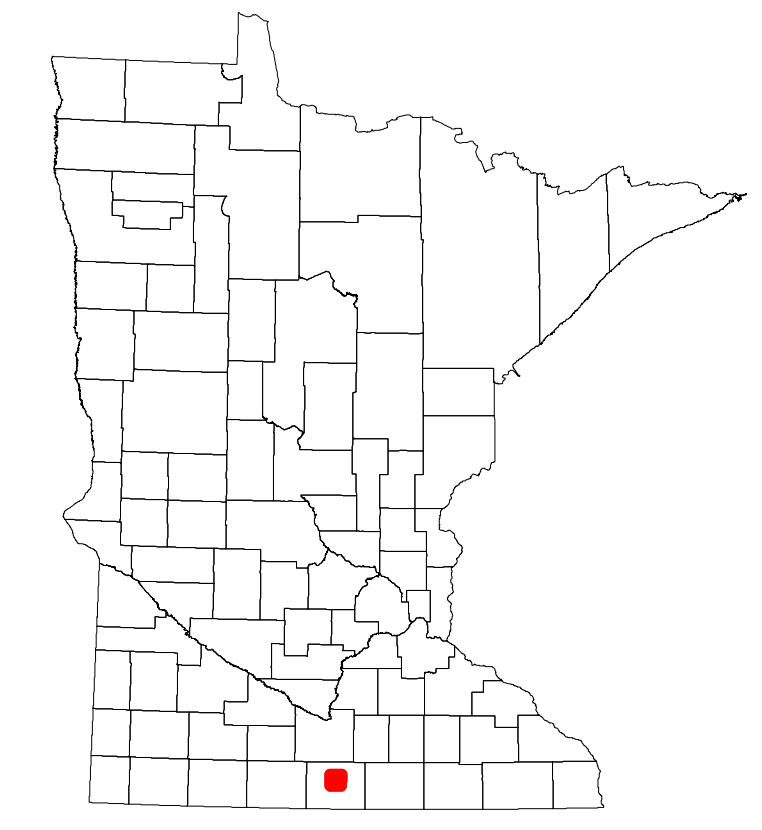
2022

Projection:
Transverse Mercator
NAD 1986
UTM Zone 15

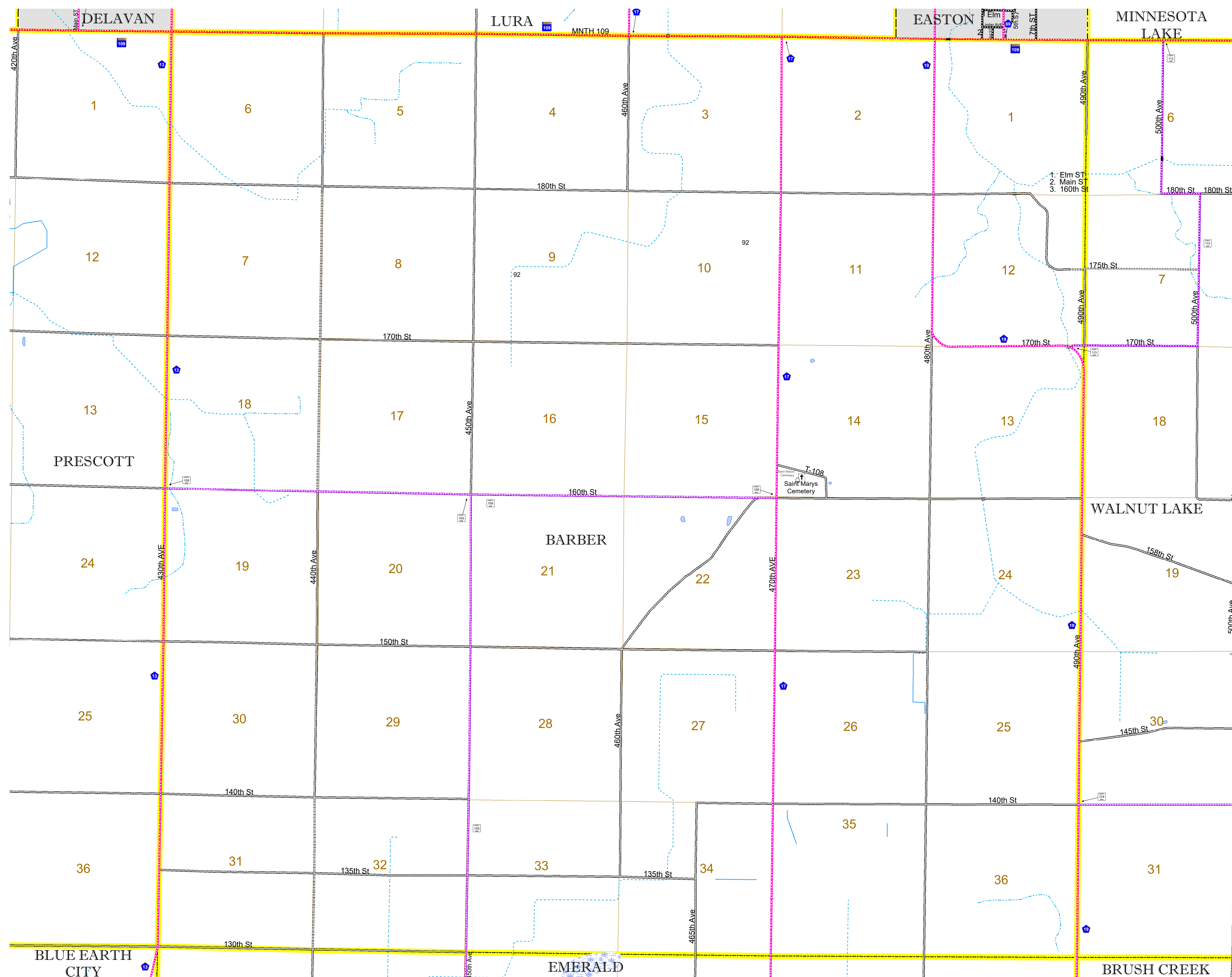


North American Datum
of 1986

ROAD AND ROADWAY FEATURES		AVIATION FEATURES	
INTERSTATE	CONCRETE	COMMERCIAL AIRPORT	GENERAL AIRPORT
US HIGHWAY	BITUMINOUS	AIRSTRIP	AIRSTRIP
MN HIGHWAY	GRAVEL	SEAPLANE	SEAPLANE
COUNTY STATE AID HIGHWAY	DIRT/UNIMPROVED	AIRPORT RUNWAY	AIRPORT RUNWAY
COUNTY ROAD	OTHER		
TOWNSHIP ROAD	UNKNOWN		
UNORGANIZED TERRITORY ROAD			
OTHER ROADS			
Municipal	RAMP OR CONNECTOR		
Private	INTERSTATE EXIT		
National Monument	GREAT RIVER ROAD		
National Park			
National Wildlife			
State Game			
State Park			
Preserve			
RAILROAD AND RAILWAY FEATURES		BOUNDARY FEATURES	
EMPIRE BUILDER STATION (AMTRAK)	TRIBAL LAND	STATE OF MINNESOTA	STATE OF MINNESOTA
NORTHSTAR STATION (COMMUTER)	COUNTY	COUNTY	COUNTY
	MUNICIPALITY	MUNICIPALITY	MUNICIPALITY
	UNORGANIZED TERRITORY	UNORGANIZED TERRITORY	UNORGANIZED TERRITORY
	FEDERAL ADJUSTED URBAN AREA (2014)	FEDERAL ADJUSTED URBAN AREA (2014)	FEDERAL ADJUSTED URBAN AREA (2014)
	CIVIL TOWNSHIP	CIVIL TOWNSHIP	CIVIL TOWNSHIP
	CONGRESSIONAL TOWNSHIP	CONGRESSIONAL TOWNSHIP	CONGRESSIONAL TOWNSHIP
	SECTION	SECTION	SECTION
	MILITARY	MILITARY	MILITARY
	VOYAGEURS NATIONAL PARK	VOYAGEURS NATIONAL PARK	VOYAGEURS NATIONAL PARK
	BOUNDARY WATERS CANOE AREA WILDERNESS	BOUNDARY WATERS CANOE AREA WILDERNESS	BOUNDARY WATERS CANOE AREA WILDERNESS
	STATE PARK	STATE PARK	STATE PARK
	REGIONAL PARK	REGIONAL PARK	REGIONAL PARK
	NATIONAL FOREST	NATIONAL FOREST	NATIONAL FOREST
	NATIONAL AND STATE FOREST	NATIONAL AND STATE FOREST	NATIONAL AND STATE FOREST
	STATE FOREST	STATE FOREST	STATE FOREST
	NATIONAL TRAIL	NATIONAL TRAIL	NATIONAL TRAIL
	WILDLIFE REFUGUE AREA	WILDLIFE REFUGUE AREA	WILDLIFE REFUGUE AREA
	WILDLIFE MANAGEMENT AREA	WILDLIFE MANAGEMENT AREA	WILDLIFE MANAGEMENT AREA
INFRASTRUCTURE FEATURES		HYDROLOGIC FEATURES	
LONG BRIDGE (200' OR GREATER SPAN)	TRIAL LAND	TRIAL LAND	TRIAL LAND
MAJOR BRIDGE (20' TO 200' SPAN)	STATE OF MINNESOTA	STATE OF MINNESOTA	STATE OF MINNESOTA
MINOR BRIDGE (5' TO 20' SPAN)	COUNTY	COUNTY	COUNTY
	MUNICIPALITY	MUNICIPALITY	MUNICIPALITY
	UNORGANIZED TERRITORY	UNORGANIZED TERRITORY	UNORGANIZED TERRITORY
	FEDERAL ADJUSTED URBAN AREA (2014)	FEDERAL ADJUSTED URBAN AREA (2014)	FEDERAL ADJUSTED URBAN AREA (2014)
	CIVIL TOWNSHIP	CIVIL TOWNSHIP	CIVIL TOWNSHIP
	CONGRESSIONAL TOWNSHIP	CONGRESSIONAL TOWNSHIP	CONGRESSIONAL TOWNSHIP
	SECTION	SECTION	SECTION
	MILITARY	MILITARY	MILITARY
	VOYAGEURS NATIONAL PARK	VOYAGEURS NATIONAL PARK	VOYAGEURS NATIONAL PARK
	BOUNDARY WATERS CANOE AREA WILDERNESS	BOUNDARY WATERS CANOE AREA WILDERNESS	BOUNDARY WATERS CANOE AREA WILDERNESS
	STATE PARK	STATE PARK	STATE PARK
	REGIONAL PARK	REGIONAL PARK	REGIONAL PARK
	NATIONAL FOREST	NATIONAL FOREST	NATIONAL FOREST
	NATIONAL AND STATE FOREST	NATIONAL AND STATE FOREST	NATIONAL AND STATE FOREST
	STATE FOREST	STATE FOREST	STATE FOREST
	NATIONAL TRAIL	NATIONAL TRAIL	NATIONAL TRAIL
	WILDLIFE REFUGUE AREA	WILDLIFE REFUGUE AREA	WILDLIFE REFUGUE AREA
	WILDLIFE MANAGEMENT AREA	WILDLIFE MANAGEMENT AREA	WILDLIFE MANAGEMENT AREA
CITY CENTERS		HYDROLOGIC FEATURES	
STATE CAPITAL	STATE FOREST	STATE FOREST	STATE FOREST
COUNTY SEAT	WILDLIFE REFUGUE AREA	WILDLIFE REFUGUE AREA	WILDLIFE REFUGUE AREA
CITY CENTER	WILDLIFE MANAGEMENT AREA	WILDLIFE MANAGEMENT AREA	WILDLIFE MANAGEMENT AREA
UNINCORPORATED COMMUNITY	RIVER OR STREAM (PERMANENT)	RIVER OR STREAM (PERMANENT)	RIVER OR STREAM (PERMANENT)
	LAKE, POND OR RESERVOIR	LAKE, POND OR RESERVOIR	LAKE, POND OR RESERVOIR
	STREAM (INTERMITTENT)	STREAM (INTERMITTENT)	STREAM (INTERMITTENT)
	DRAINAGE DITCH	DRAINAGE DITCH	DRAINAGE DITCH
	WETLAND	WETLAND	WETLAND
	ISLAND OR LAND	ISLAND OR LAND	ISLAND OR LAND
	REGIONAL WATERSHED	REGIONAL WATERSHED	REGIONAL WATERSHED
PUBLIC SERVICE FEATURES		CULTURAL FEATURES	
MNDOT OFFICE	STATE HISTORICAL MARKER	STATE HISTORICAL MARKER	STATE HISTORICAL MARKER
MNDOT TRUCK STATION	HISTORIC DISTRICT	HISTORIC DISTRICT	HISTORIC DISTRICT
HIGHWAY PATROL DISTRICT OFFICE	HISTORIC SITE	HISTORIC SITE	HISTORIC SITE
STATE TRAVEL INFORMATION CENTER	MONUMENT	MONUMENT	MONUMENT
REST AREA (FULL SERVICE)			
REST AREA (VAULT TOILET)			
WAYSIDE (VAULT OR PITY TOILET)			
PARK AND RIDE LOT			
PORT OF ENTRY			
PUBLIC ACCESS POINT			
MN STATE COLLEGE AND UNIVERSITY SYSTEM (MNSCU)			
UNIVERSITY OF MN SYSTEM			
FAIRGROUNDS			



Population (U.S. Census 2010): 248



To request information from this document in an alternative format, call 651-366-4718 or 1-800-657-3774 (Greater Minnesota); 711 or 1-800-627-3529 (Minnesota Relay). You may also send an e-mail to ADRequest.dot@state.mn.us. (Please request at least one week in advance.)