

BELLE CREEK

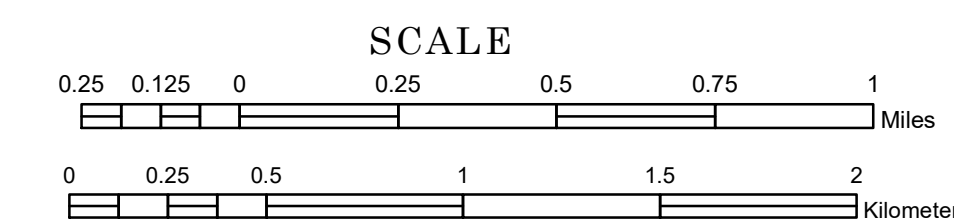
GOODHUE

BELVIDERE

TOWNSHIP OF ZUMBROTA

PREPARED BY THE
MINNESOTA DEPARTMENT OF TRANSPORTATION
OFFICE OF TRANSPORTATION SYSTEM MANAGEMENT

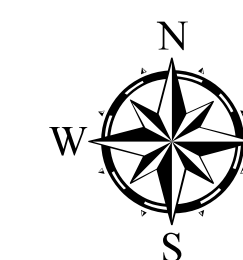
IN COOPERATION WITH
U.S. DEPARTMENT OF TRANSPORTATION
FEDERAL HIGHWAY ADMINISTRATION



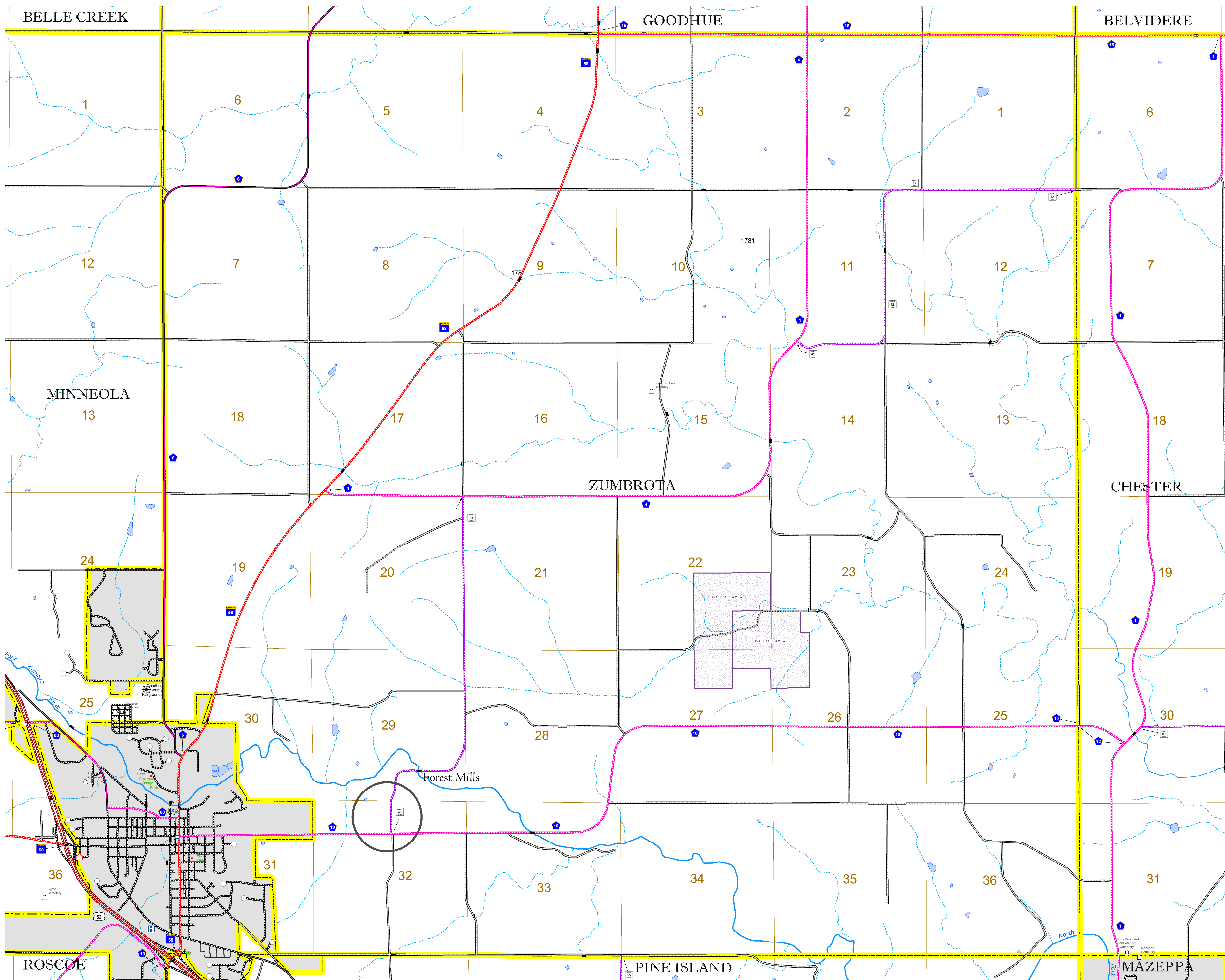
1 in = 1,600 ft

2022

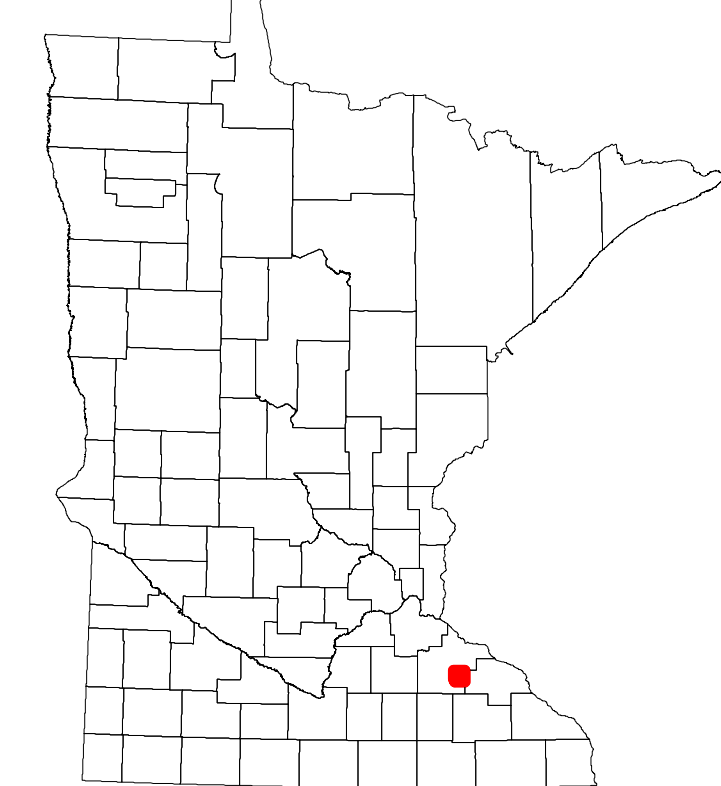
Projection:
Transverse Mercator
NAD 1986
UTM Zone 15



North American Datum
of 1986



ROAD AND ROADWAY FEATURES		AVIATION FEATURES	
INTERSTATE	CONCRETE	COMMERCIAL AIRPORT	TRIBAL LAND
US HIGHWAY	BITUMINOUS	GENERAL AIRPORT	STATE OF MINNESOTA
MN HIGHWAY	GRAVEL	AIRSTRIP	COUNTY
COUNTY STATE AID HIGHWAY	DIRT/UNIMPROVED	SEAPLANE	MUNICIPALITY
COUNTY ROAD	OTHER	AIRPORT RUNWAY	UNINCORPORATED
TOWNSHIP ROAD	UNKNOWN		CIVIL TOWNSHIP
UNORGANIZED TERRITORY ROAD			CONGRESSIONAL TOWNSHIP
OTHER ROADS			SECTION
Municipal	RAMP OR CONNECTOR		MILITARY
Private	INTERSTATE EXIT		VOYAGERS NATIONAL PARK
National Monument			BOUNDARY WATERS CANOE AREA WILDERNESS
National Park			STATE PARK
National Wildlife Refuge			REGIONAL PARK
State Park			NATIONAL FOREST
Preserve			NATIONAL AND STATE FOREST
			STATE FOREST
			NATIONAL TRAIL
			WILDLIFE REFUGUE AREA
			WILDLIFE MANAGEMENT AREA
			HYDROLOGIC FEATURES
			RIVER OR STREAM (PERMANENT)
			LAKE, POND OR RESERVOIR
			STREAM (INTERMITTENT)
			DRAINAGE DITCH
			WETLAND
			ISLAND OR LAND
			REGIONAL WATERSHED



Population (U.S. Census 2010): 586

To request information from this document in an alternative format, call 651-366-4718 or 1-800-657-3774 (Greater Minnesota); 711 or 1-800-627-3529 (Minnesota Relay). You may also send an e-mail to ADAREquest.dot@state.mn.us. (Please request at least one week in advance.)