

# TOWNSHIP OF HOKAH

PREPARED BY THE  
MINNESOTA DEPARTMENT OF TRANSPORTATION  
OFFICE OF TRANSPORTATION SYSTEM MANAGEMENT

IN COOPERATION WITH  
U.S. DEPARTMENT OF TRANSPORTATION  
FEDERAL HIGHWAY ADMINISTRATION



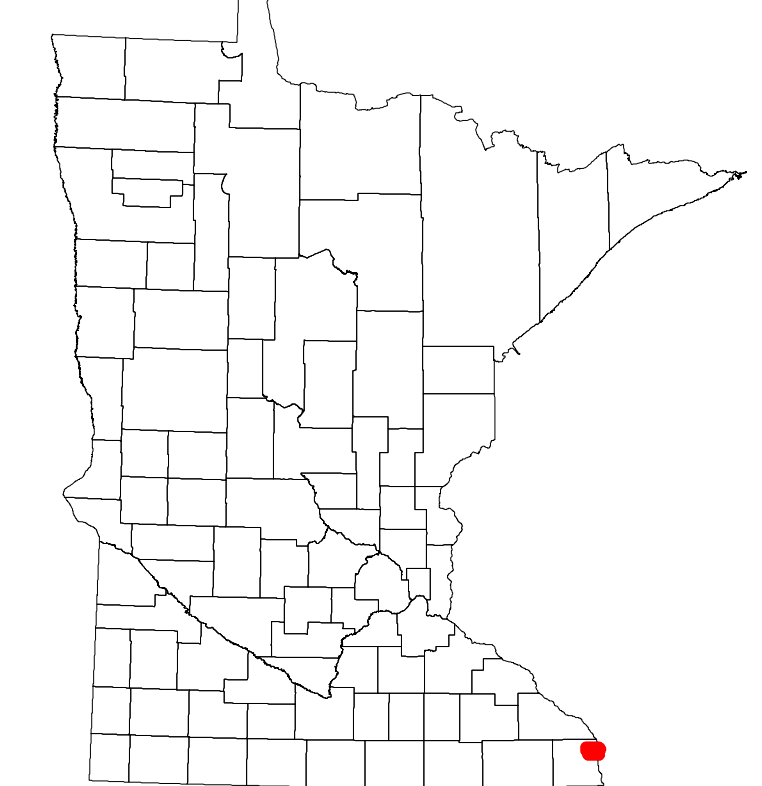
1 in = 1,600 ft  
**2022**

Projection:  
Transverse Mercator  
NAD 1986  
UTM Zone 15

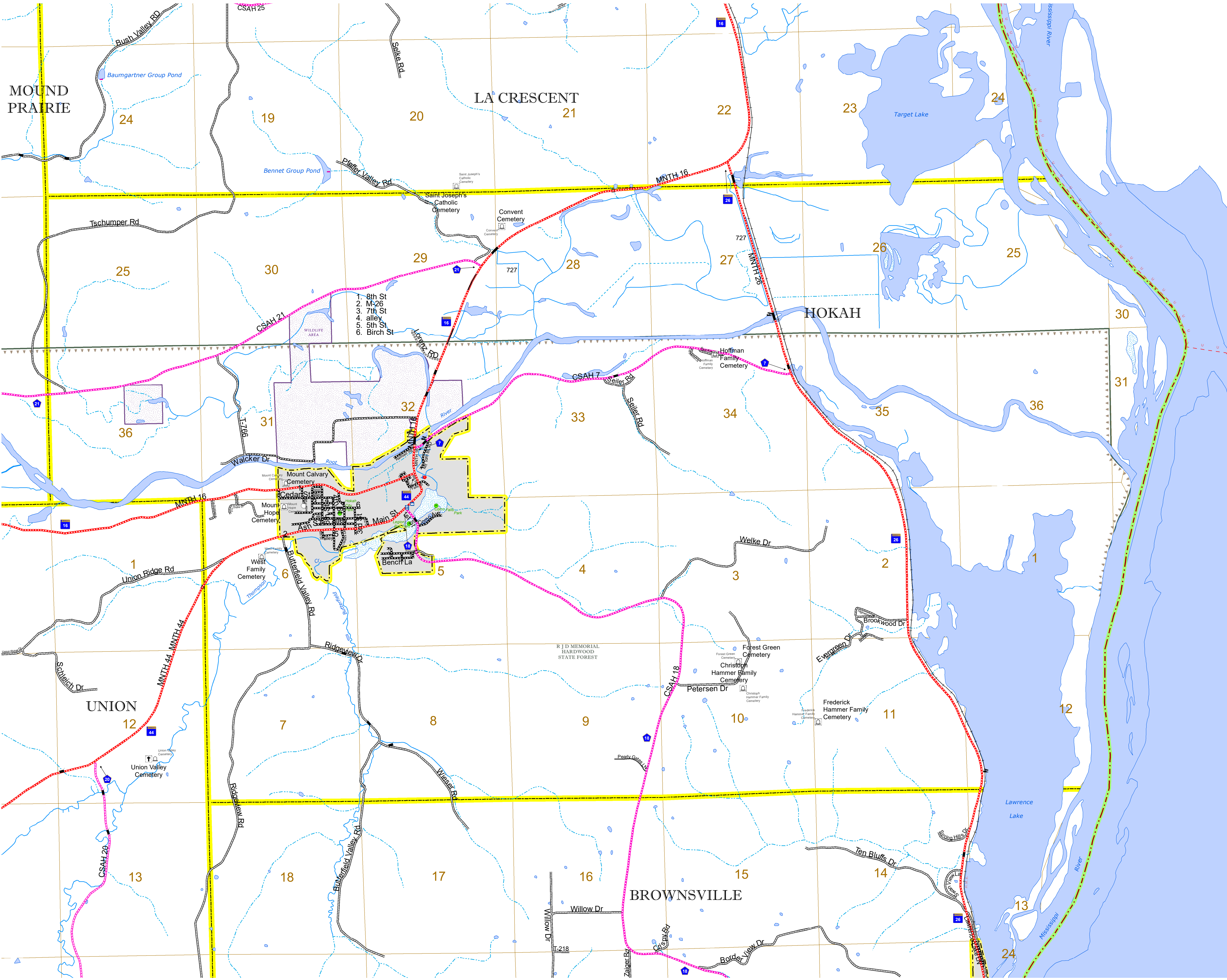


North American Datum  
of 1986

ROAD AND ROADWAY FEATURES		RAILROAD AND RAILWAY FEATURES		AVIATION FEATURES		BOUNDARY FEATURES	
INTERSTATE	CONCRETE	EMPIRE BUILDER STATION (AMTRAK)	COMMERCIAL AIRPORT	TRIBAL LAND	STATE OF MINNESOTA	COUNTY	MUNICIPALITY
US HIGHWAY	BITUMINOUS	NORTHSTAR STATION (COMMUTER)	GENERAL AIRPORT	STATE OF MINNESOTA	COUNTY	MUNICIPALITY	MUNICIPALITY
MN HIGHWAY	GRAVEL	LIGHT RAIL	AIRSTRIP	LONG BRIDGE (200' OR GREATER SPAN)	STATE OF MINNESOTA	COUNTY	MUNICIPALITY
COUNTY STATE AID HIGHWAY	DIRT/UNIMPROVED	BLUE LINE	SEAPLANE	MAJOR BRIDGE (20' TO 200' SPAN)	STATE OF MINNESOTA	COUNTY	MUNICIPALITY
COUNTY ROAD	OTHER	GREEN LINE	AIRPORT RUNWAY	MINOR BRIDGE (5' TO 20' SPAN)	STATE OF MINNESOTA	COUNTY	MUNICIPALITY
TOWNSHIP ROAD	UNKNOWN	INFRASTRUCTURE FEATURES	RAILROAD AND RAILWAY FEATURES	DAM	STATE OF MINNESOTA	COUNTY	MUNICIPALITY
UNORGANIZED TERRITORY ROAD		LONG BRIDGE (200' OR GREATER SPAN)	EMPIRE BUILDER STATION (AMTRAK)	LOCK AND DAM	STATE OF MINNESOTA	COUNTY	MUNICIPALITY
OTHER ROADS		MAJOR BRIDGE (20' TO 200' SPAN)	NORTHSTAR STATION (COMMUTER)		STATE OF MINNESOTA	COUNTY	MUNICIPALITY
MUNICIPAL		MINOR BRIDGE (5' TO 20' SPAN)	LIGHT RAIL		STATE OF MINNESOTA	COUNTY	MUNICIPALITY
PRIVATE		DAM	BLUE LINE		STATE OF MINNESOTA	COUNTY	MUNICIPALITY
NATIONAL MONUMENT		LOCK AND DAM	GREEN LINE		STATE OF MINNESOTA	COUNTY	MUNICIPALITY
NATIONAL WILDLIFE			INFRASTRUCTURE FEATURES		STATE OF MINNESOTA	COUNTY	MUNICIPALITY
STATE FOREST			LONG BRIDGE (200' OR GREATER SPAN)		STATE OF MINNESOTA	COUNTY	MUNICIPALITY
STATE PARK			MAJOR BRIDGE (20' TO 200' SPAN)		STATE OF MINNESOTA	COUNTY	MUNICIPALITY
STATE TRAIL			MINOR BRIDGE (5' TO 20' SPAN)		STATE OF MINNESOTA	COUNTY	MUNICIPALITY
STATE FOREST			DAM		STATE OF MINNESOTA	COUNTY	MUNICIPALITY
WILDLIFE REFUGUE AREA			LOCK AND DAM		STATE OF MINNESOTA	COUNTY	MUNICIPALITY
WILDLIFE MANAGEMENT AREA					STATE OF MINNESOTA	COUNTY	MUNICIPALITY
HYDROLOGIC FEATURES					STATE OF MINNESOTA	COUNTY	MUNICIPALITY
RIVER OR STREAM (PERENNIAL)					STATE OF MINNESOTA	COUNTY	MUNICIPALITY
LAKE, POND OR RESERVOIR					STATE OF MINNESOTA	COUNTY	MUNICIPALITY
STREAM (INTERMITTENT)					STATE OF MINNESOTA	COUNTY	MUNICIPALITY
DRAINAGE DITCH					STATE OF MINNESOTA	COUNTY	MUNICIPALITY
WETLAND					STATE OF MINNESOTA	COUNTY	MUNICIPALITY
ISLAND OR LAND					STATE OF MINNESOTA	COUNTY	MUNICIPALITY
REGIONAL WATERSHED					STATE OF MINNESOTA	COUNTY	MUNICIPALITY



Population (U.S. Census 2010): 497



To request information from this document in an alternative format, call 651-366-4718 or 1-800-657-3774 (Greater Minnesota); 711 or 1-800-627-3529 (Minnesota Relay). You may also send an e-mail to ADRequest.dot@state.mn.us. (Please request at least one week in advance.)