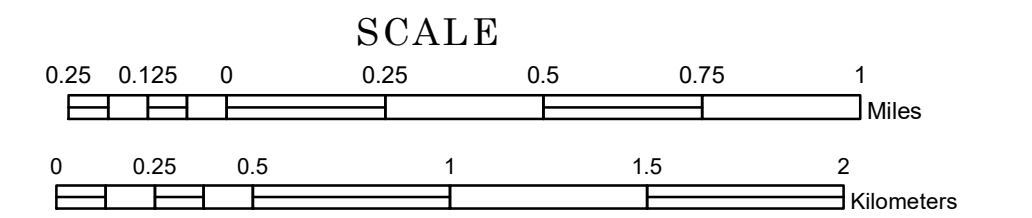


TOWNSHIP OF MONEY CREEK

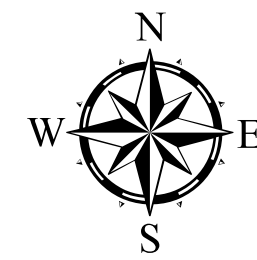
PREPARED BY THE
MINNESOTA DEPARTMENT OF TRANSPORTATION
OFFICE OF TRANSPORTATION SYSTEM MANAGEMENT

IN COOPERATION WITH
U.S. DEPARTMENT OF TRANSPORTATION
FEDERAL HIGHWAY ADMINISTRATION



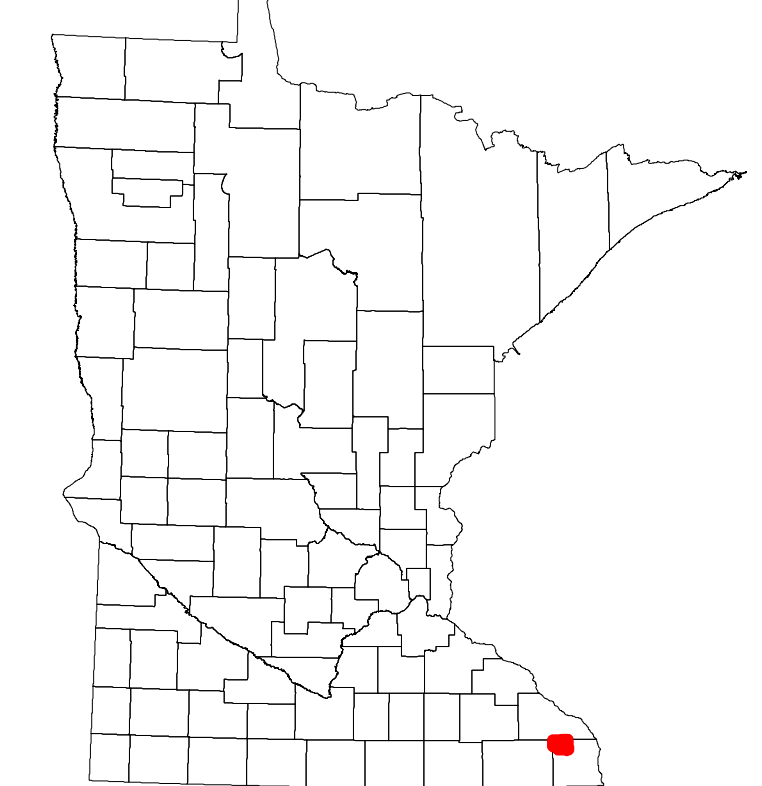
1 in = 1,600 ft
2022

Projection:
Transverse Mercator
NAD 1986
UTM Zone 15

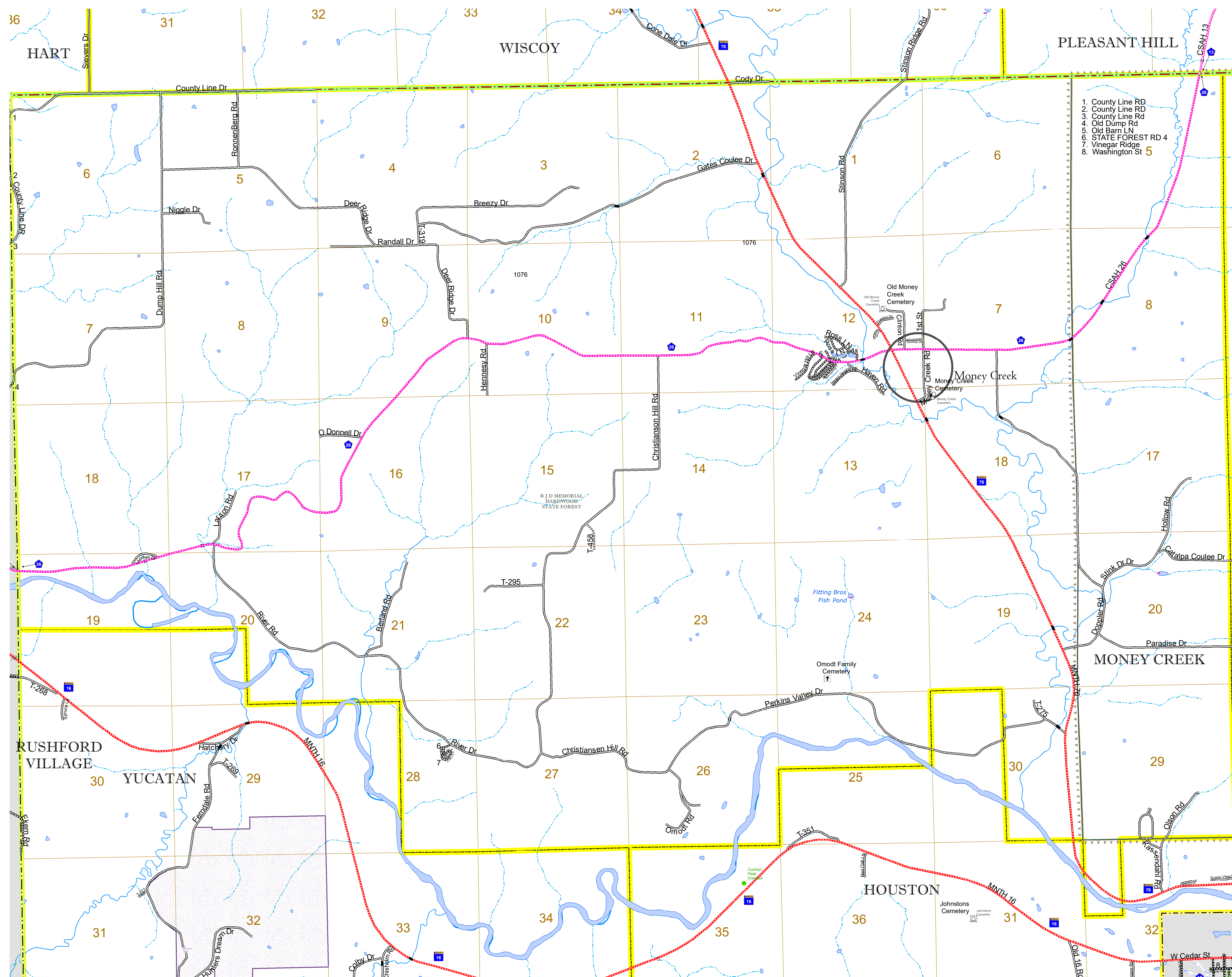


North American Datum
of 1986

| ROAD AND ROADWAY FEATURES | |
|------------------------------------|---------------------------------------|
| INTERSTATE | CONCRETE |
| US HIGHWAY | BITUMINOUS |
| MN HIGHWAY | GRAVEL |
| COUNTY STATE AID HIGHWAY | DIRT/UNIMPROVED |
| COUNTY ROAD | OTHER |
| TOWNSHIP ROAD | UNKNOWN |
| UNORGANIZED TERRITORY ROAD | |
| OTHER ROADS | |
| Municipal | RAMP OR CONNECTOR |
| Private | INTERSTATE EXIT |
| National Monument | GREAT RIVER ROAD |
| National Park | |
| National Wildlife | |
| State Game | |
| State Park | |
| Preserve | |
| RAILROAD AND RAILWAY FEATURES | |
| EMPIRE BUILDER STATION (AMTRAK) | COMMERCIAL AIRPORT |
| NORTHSTAR STATION (COMMUTER) | GENERAL AIRPORT |
| LIGHT RAIL | AIRSTRIP |
| BLUE LINE | SEAPLANE |
| GREEN LINE | AIRPORT RUNWAY |
| INFRASTRUCTURE FEATURES | |
| LONG BRIDGE (200' or Greater Span) | TRIAL LAND |
| MAJOR BRIDGE (20' to 200' Span) | STATE OF MINNESOTA |
| MINOR BRIDGE (5' to 20' Span) | COUNTY |
| LOCK AND DAM | MUNICIPALITY |
| | UNORGANIZED TERRITORY |
| | FEDERAL ADJUSTED URBAN AREA (2014) |
| | CIVIL TOWNSHIP |
| | CONGRESSIONAL TOWNSHIP |
| | SECTION |
| | MILITARY |
| | VOYAGEURS NATIONAL PARK |
| | BOUNDARY WATERS CANOE AREA WILDERNESS |
| | STATE PARK |
| | REGIONAL PARK |
| | NATIONAL FOREST |
| | NATIONAL AND STATE FOREST |
| | STATE FOREST |
| | WILDLIFE REFUGUE AREA |
| | WILDLIFE MANAGEMENT AREA |
| HYDROLOGIC FEATURES | |
| RIVER OR STREAM (PERMANENT) | LAKE, POND OR RESERVOIR |
| STREAM (INTERMITTENT) | WETLAND |
| DRAINAGE DITCH | ISLAND OR LAND |
| WETLAND | REGIONAL WATERSHED |



Population (U.S. Census 2010): 597



To request information from this document in an alternative format, call 651-366-4718 or 1-800-657-3774 (Greater Minnesota); 711 or 1-800-627-3529 (Minnesota Relay). You may also send an e-mail to ADRequest.dot@state.mn.us. (Please request at least one week in advance.)