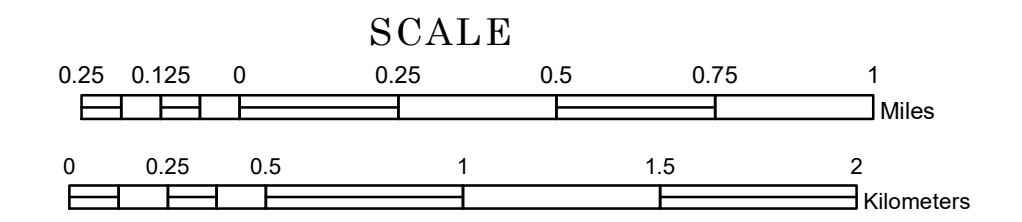


TOWNSHIP OF LAKEPORT

PREPARED BY THE
MINNESOTA DEPARTMENT OF TRANSPORTATION
OFFICE OF TRANSPORTATION SYSTEM MANAGEMENT

IN COOPERATION WITH
U.S. DEPARTMENT OF TRANSPORTATION
FEDERAL HIGHWAY ADMINISTRATION



1 in = 1,600 ft

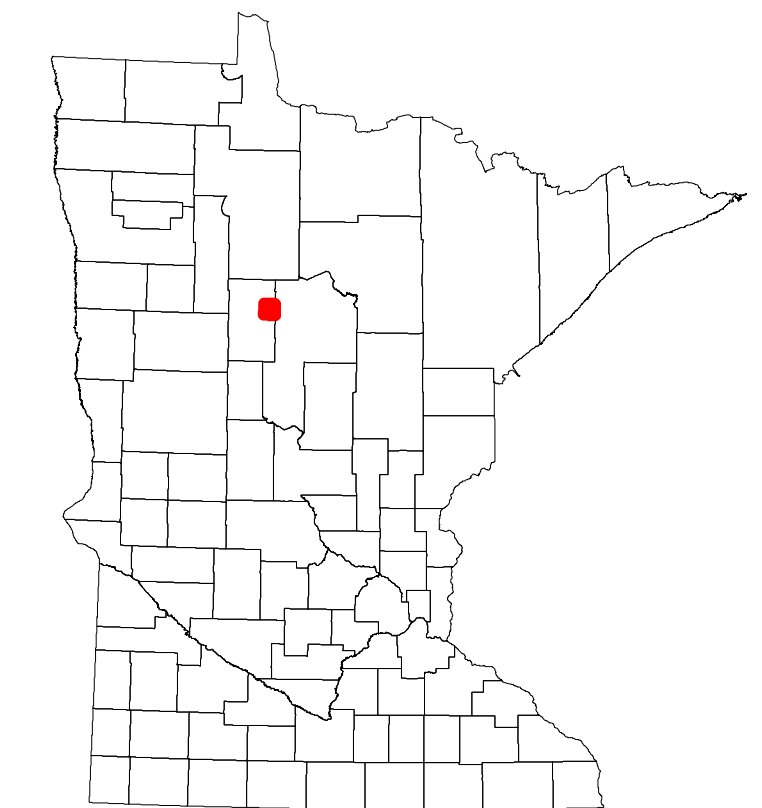
2022

Projection:
Transverse Mercator
NAD 1986
UTM Zone 15

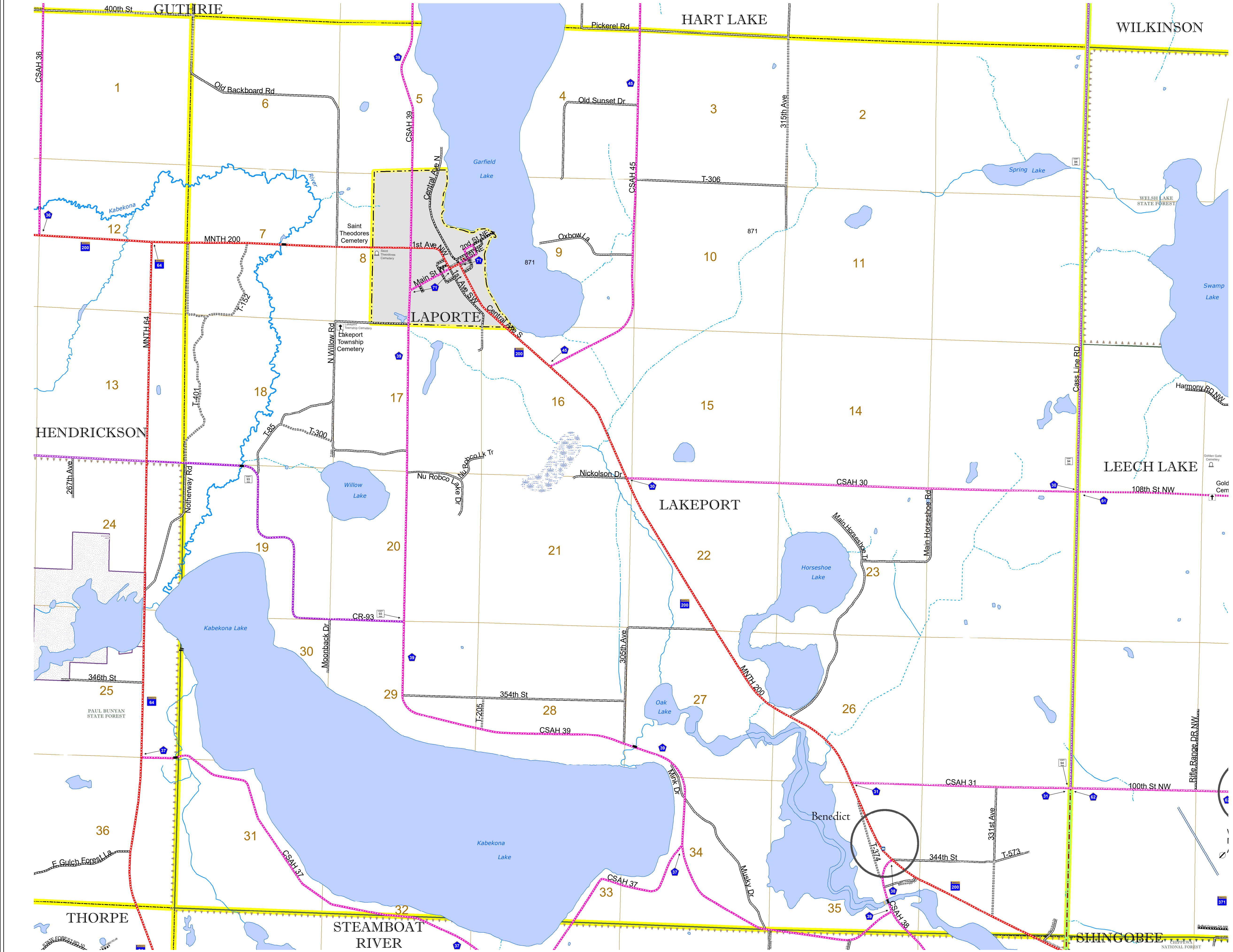


North American Datum
of 1986

ROAD AND ROADWAY FEATURES		AVIATION FEATURES	
INTERSTATE	CONCRETE	COMMERCIAL AIRPORT	GENERAL AIRPORT
US HIGHWAY	BITUMINOUS	AIRSTRIP	SEAPLANE
MN HIGHWAY	GRAVEL	AIRPORT RUNWAY	BOUNDARY FEATURES
COUNTY STATE AID HIGHWAY	DIRT/UNIMPROVED		
COUNTY ROAD	OTHER		
TOWNSHIP ROAD	UNKNOWN		
UNORGANIZED TERRITORY ROAD			
OTHER ROADS			
Municipal	RAMP OR CONNECTOR		
Private	INTERSTATE EXIT		
National Monument	GREAT RIVER ROAD		
State Forest			
National Park			
National Wildlife			
State Park			
Preserve			
RAILROAD AND RAILWAY FEATURES		CITY CENTERS	
EMPIRE BUILDER STATION (AMTRAK)	COMMERCIAL AIRPORT	STATE CAPITAL	CITY CENTER
NORTHSTAR STATION (COMPUTER)	GENERAL AIRPORT	COUNTY SEAT	CITY CENTER
	AIRSTRIP		UNINCORPORATED COMMUNITY
	SEAPLANE		
	AIRPORT RUNWAY		
INFRASTRUCTURE FEATURES		PUBLIC SERVICE FEATURES	
LONG BRIDGE (200' OR GREATER SPAN)	TRIBAL LAND	MNDOT OFFICE	VOYAGEURS NATIONAL PARK
MAJOR BRIDGE (20' TO 200' SPAN)	STATE OF MINNESOTA	HIGHWAY PATROL DISTRICT OFFICE	BOUNDARY WATERS CANOE AREA WILDERNESS
MINOR BRIDGE (5' TO 20' SPAN)	COUNTY	STATE TRAVEL INFORMATION CENTER	STATE PARK
DAM	MUNICIPALITY	REST AREA (FULL SERVICE)	REGIONAL PARK
LOCK AND DAM	UNORGANIZED TERRITORY	REST AREA (VAULT TOILET)	NATIONAL FOREST
	FEDERAL ADJUSTED URBAN AREA (2014)	WAYSIDE (VAULT OR PIT TOILET)	NATIONAL AND STATE FOREST
	CIVIL TOWNSHIP	PARK AND RIDE LOT	STATE FOREST
	CONGRESSIONAL TOWNSHIP	PORT OF ENTRY	NATIONAL TRAIL
	SECTION	PUBLIC ACCESS POINT	WILDLIFE REFUGUE AREA
	MILITARY	MN STATE COLLEGE AND UNIVERSITY SYSTEM (MNSCU)	WILDLIFE MANAGEMENT AREA
	VOYAGEURS NATIONAL PARK	UNIVERSITY OF MN SYSTEM	HYDROLOGIC FEATURES
	BOUNDARY WATERS CANOE AREA WILDERNESS	FAIRGROUNDS	RIVER OR STREAM (PERMANENT)
	REGIONAL PARK		LAKE, POND OR RESERVOIR
	NATIONAL FOREST		STREAM (INTERMITTENT)
	NATIONAL AND STATE FOREST		DRAINAGE DITCH
	STATE FOREST		WETLAND
	WILDLIFE REFUGUE AREA		ISLAND OR LAND
	WILDLIFE MANAGEMENT AREA		REGIONAL WATERSHED
	HYDROLOGIC FEATURES		
	RIVER OR STREAM (PERMANENT)		
	LAKE, POND OR RESERVOIR		
	STREAM (INTERMITTENT)		
	DRAINAGE DITCH		
	WETLAND		
	ISLAND OR LAND		
	REGIONAL WATERSHED		



Population (U.S. Census 2010): 845



To request information from this document in an alternative format, call 651-366-4718 or 1-800-657-3774 (Greater Minnesota); 711 or 1-800-627-3529 (Minnesota Relay). You may also send an e-mail to ADRequest.dot@state.mn.us. (Please request at least one week in advance.)