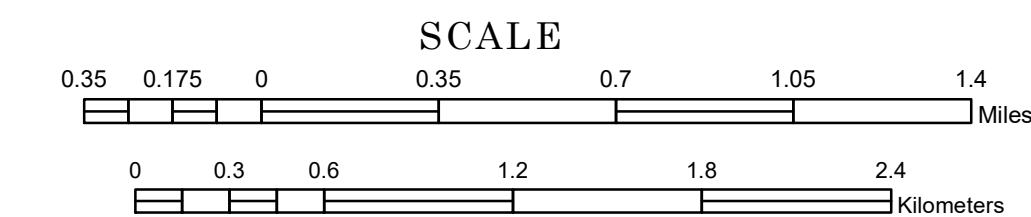


TOWNSHIP OF ATHENS

PREPARED BY THE
MINNESOTA DEPARTMENT OF TRANSPORTATION
OFFICE OF TRANSPORTATION SYSTEM MANAGEMENT

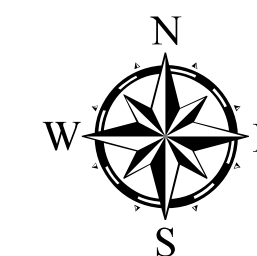
IN COOPERATION WITH
U.S. DEPARTMENT OF TRANSPORTATION
FEDERAL HIGHWAY ADMINISTRATION



1 in = 2,000 ft

2023

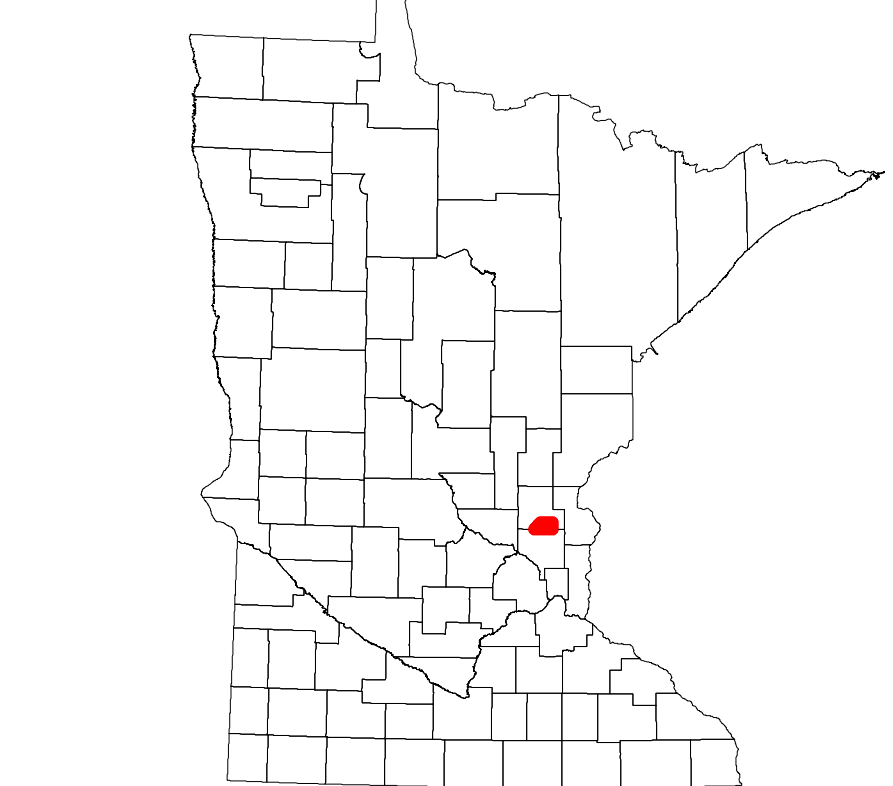
Projection:
Transverse Mercator
NAD 1986
UTM Zone 15



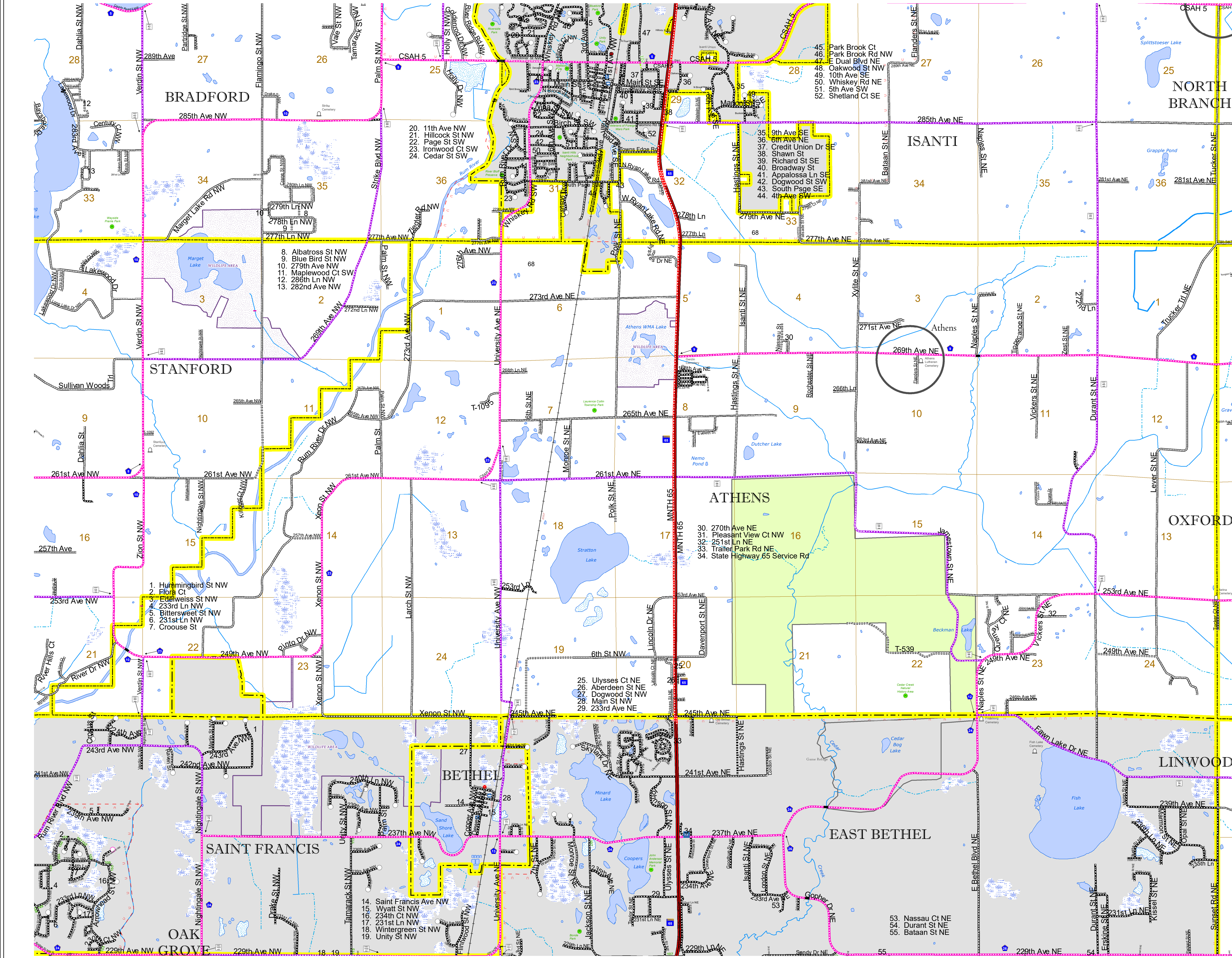
North American Datum
of 1986

ROAD AND ROADWAY FEATURES			
INTERSTATE	CONCRETE		
US HIGHWAY	BITUMINOUS		
MN HIGHWAY	GRAVEL		
COUNTY STATE AID HIGHWAY	DIRT/UNIMPROVED		
COUNTY ROAD	OTHER		
TOWNSHIP ROAD	UNKNOWN		
UNORGANIZED TERRITORY ROAD			
OTHER ROADS	RAMP OR CONNECTOR		
Municipal	Private	National Monument	State Forest
Nature Service	National Park	National Wildlife	State Game
Military	National Forest	State Park	Preserve
RAILROAD AND RAILWAY FEATURES			
EMPIRE BUILDER STATION (AMTRAK)	COMMERCIAL AIRPORT		
NORTHSTAR STATION (COMPUTER)	GENERAL AIRPORT		
LIGHT RAIL	AIRSTRIP		
BLUE LINE	SEAPLANE		
GREEN LINE	AIRPORT RUNWAY		
INFRASTRUCTURE FEATURES			
LONG BRIDGE (200' OR GREATER SPAN)	TRIAL LAND		
MAJOR BRIDGE (5' TO 200' SPAN)	STATE OF MINNESOTA		
MINOR BRIDGE (5' TO 20' SPAN)	COUNTY		
DAM	MUNICIPALITY		
LOCK-AND-DAM	UNORGANIZED TERRITORY		
CITY CENTERS			
STATE CAPITAL	COUNTY SEAT	CITY CENTER	UNINCORPORATED COMMUNITY
PUBLIC SERVICE FEATURES			
MNDOT OFFICE	MNDOT TRUCK STATION	STATE TRAVEL INFORMATION CENTER	REST AREA (FULL SERVICE)
REST AREA (VAULT TOILET)	WAYSIDE (VAULT OR PITY TOILET)	PARK AND RIDE LOT	PORT OF ENTRY
PUBLIC ACCESS POINT	MN STATE COLLEGE AND UNIVERSITY SYSTEM (MNSCU)	UNIVERSITY OF MN SYSTEM	FAIRGROUNDS
CULTURAL FEATURES			
STATE HISTORICAL MARKER	HISTORIC DISTRICT	HISTORIC SITE	MONUMENT

BOUNDARY FEATURES	
SECTION	MILITARY
VOYAGEURS NATIONAL PARK	BOUNDARY WATERS CANOE AREA WILDERNESS
STATE PARK	REGIONAL PARK
NATIONAL FOREST	NATIONAL AND STATE FOREST
STATE FOREST	NATIONAL TRAIL
WILDLIFE REFUGUE AREA	WILDLIFE MANAGEMENT AREA
HYDROLOGIC FEATURES	
RIVER OR STREAM (PERMANENT)	LAKE, POND OR RESERVOIR
STREAM (INTERMITTENT)	DRAINAGE DITCH
WETLAND	ISLAND OR LAND
REGIONAL WATERSHED	



Population (U.S. Census 2010): 2177



To request information from this document in an alternative format, call 651-366-4718 or 1-800-657-3774 (Greater Minnesota); 711 or 1-800-627-3529 (Minnesota Relay). You may also send an e-mail to ADArequest.dot@state.mn.us. (Please request at least one week in advance.)