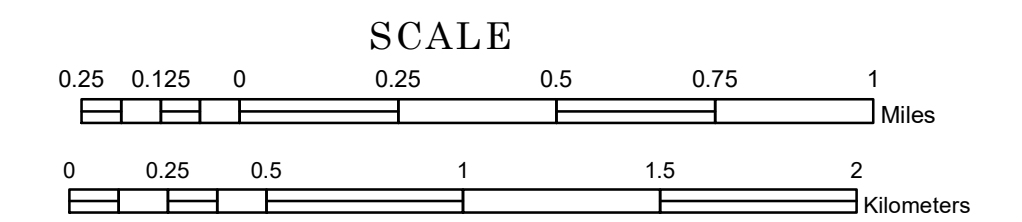


TOWNSHIP OF LAKE ANDREW

PREPARED BY THE
MINNESOTA DEPARTMENT OF TRANSPORTATION
OFFICE OF TRANSPORTATION SYSTEM MANAGEMENT

IN COOPERATION WITH
U.S. DEPARTMENT OF TRANSPORTATION
FEDERAL HIGHWAY ADMINISTRATION



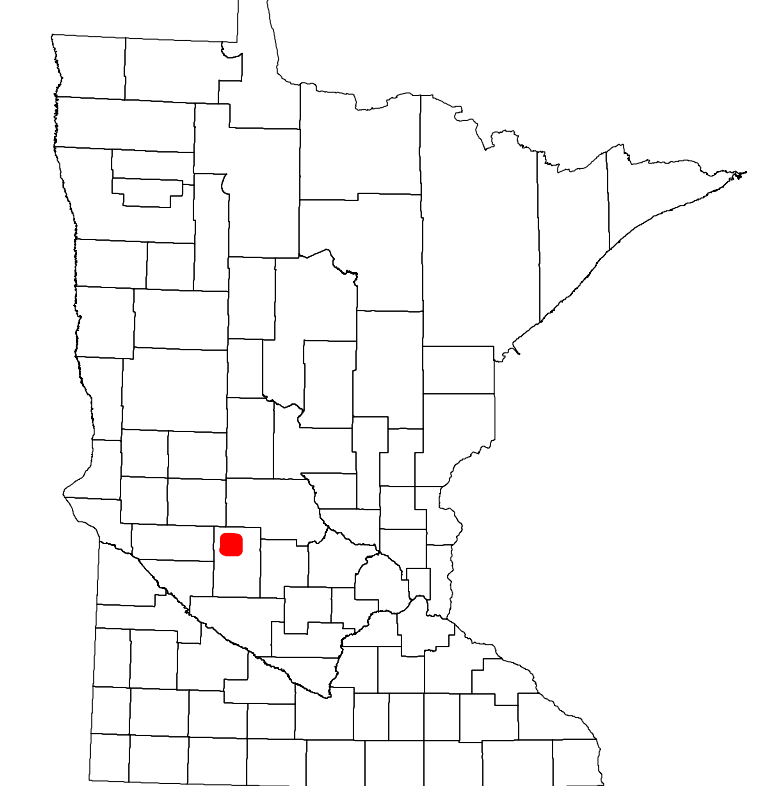
1 in = 1,600 ft
2022

Projection:
Transverse Mercator
NAD 1986
UTM Zone 15

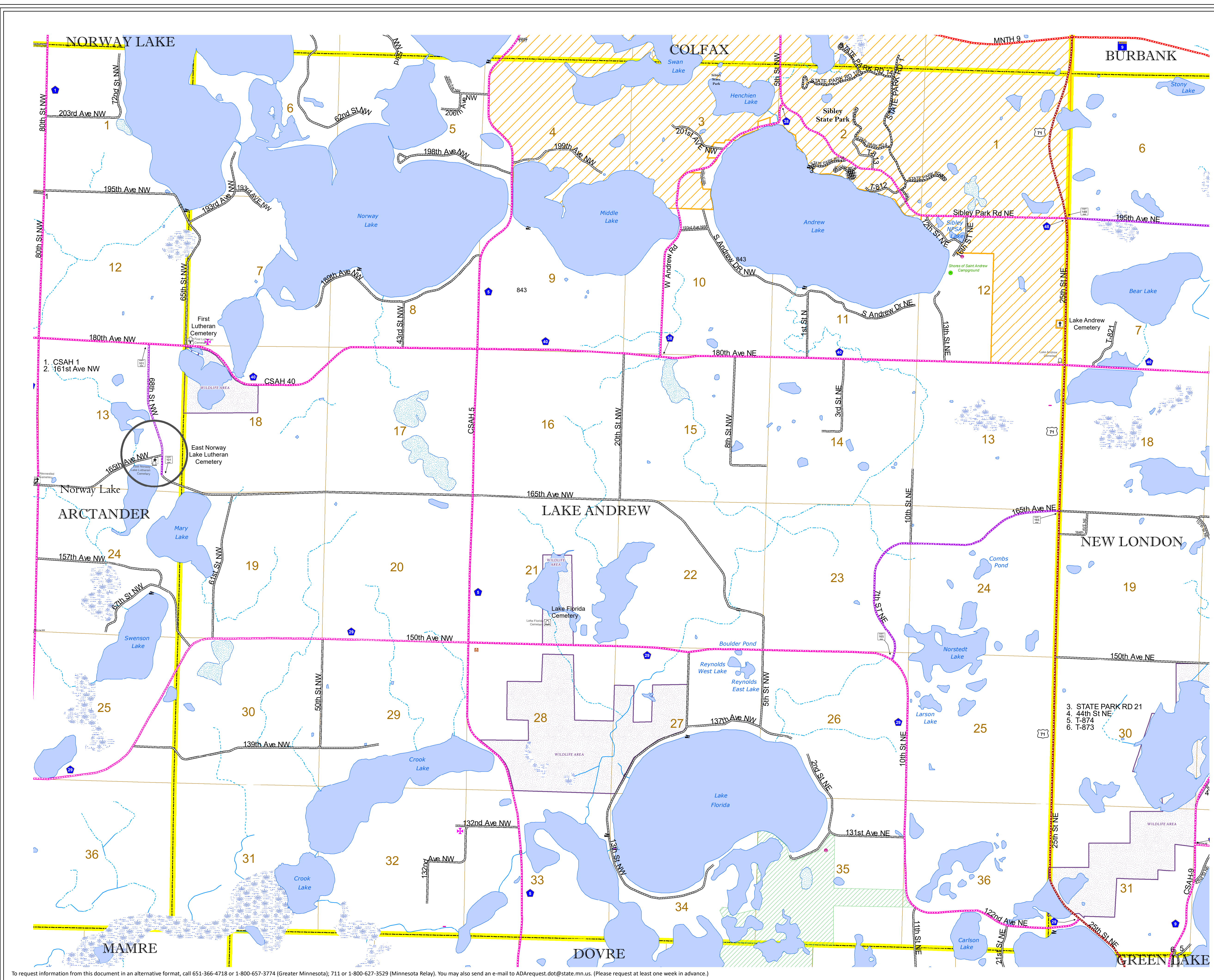


North American Datum
of 1986

ROAD AND ROADWAY FEATURES		BOUNDARY FEATURES	
INTERSTATE	CONCRETE	TRIAL LAND	TRIBAL LAND
US HIGHWAY	BITUMINOUS	STATE OF MINNESOTA	COUNTY
MN HIGHWAY	GRAVEL	MUNICIPALITY	UNINCORPORATED COMMUNITY
COUNTY STATE AID HIGHWAY	DIRT/UNIMPROVED	UNINCORPORATED TOWNSHIP	SECTION
COUNTY ROAD	OTHER	FEDERAL ADJUSTED URBAN AREA (2014)	MILITARY
TOWNSHIP ROAD	UNKNOWN	CIVIL TOWNSHIP	VOYAGEURS NATIONAL PARK
UNORGANIZED TERRITORY ROAD		CONGRESSIONAL TOWNSHIP	BOUNDARY WATERS CANOE AREA WILDERNESS
OTHER ROADS			STATE PARK
Municipal	RAMP OR CONNECTOR		NATIONAL FOREST
Private	INTERSTATE EXIT		NATIONAL AND STATE FOREST
Nature Service	AVIATION FEATURES		STATE FOREST
Military	GENERAL AIRPORT		WILDLIFE REFUGUE AREA
	AIRSTRIP		WILDLIFE MANAGEMENT AREA
	SEAPLANE		HYDROLOGIC FEATURES
	AIRPORT RUNWAY		RIVER OR STREAM (PERENNIAL)
			LAKE, POND OR RESERVOIR
			STREAM (INTERMITTENT)
			DRAINAGE DITCH
			WETLAND
			ISLAND OR LAND
			REGIONAL WATERSHED



Population (U.S. Census 2010): 982



To request information from this document in an alternative format, call 651-366-4718 or 1-800-657-3774 (Greater Minnesota); 711 or 1-800-627-3529 (Minnesota Relay). You may also send an e-mail to ADARquest.dot@state.mn.us. (Please request at least one week in advance.)