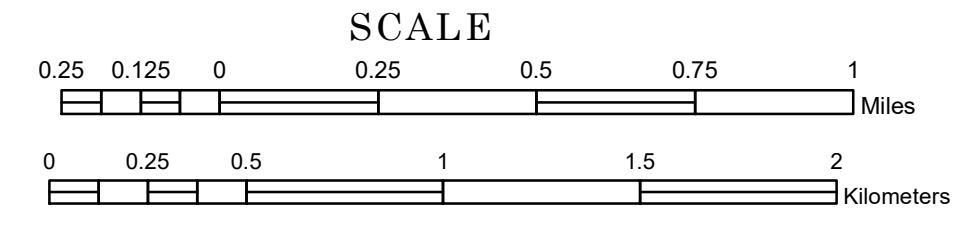


TOWNSHIP OF MAMRE

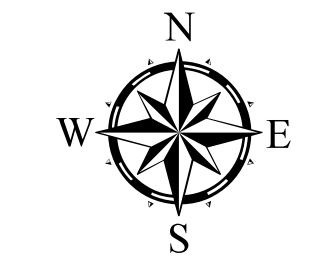
PREPARED BY THE
MINNESOTA DEPARTMENT OF TRANSPORTATION
OFFICE OF TRANSPORTATION SYSTEM MANAGEMENT

IN COOPERATION WITH
U.S. DEPARTMENT OF TRANSPORTATION
FEDERAL HIGHWAY ADMINISTRATION



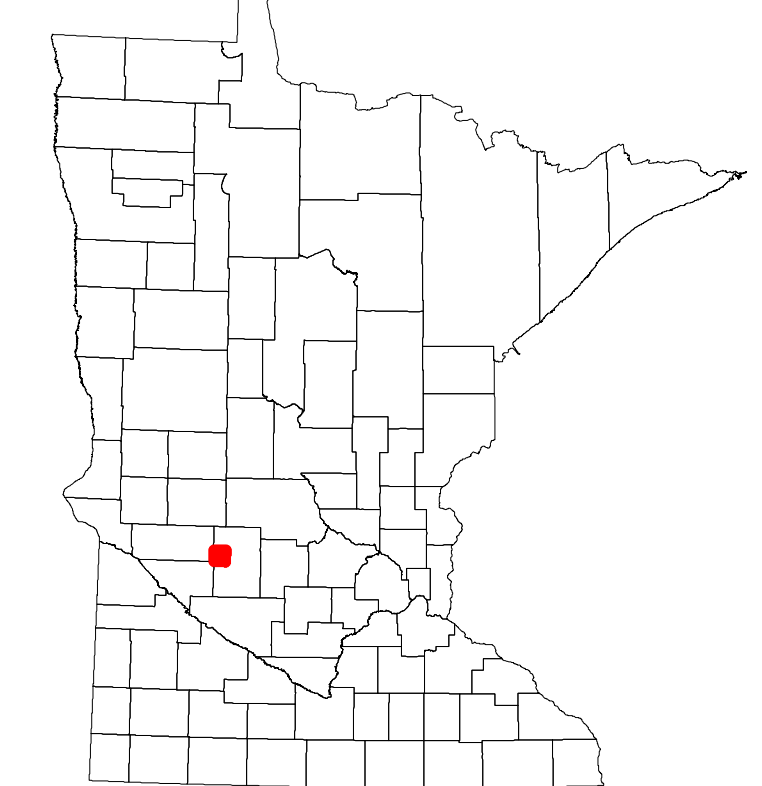
2022

Projection:
Transverse Mercator
NAD 1986
UTM Zone 15

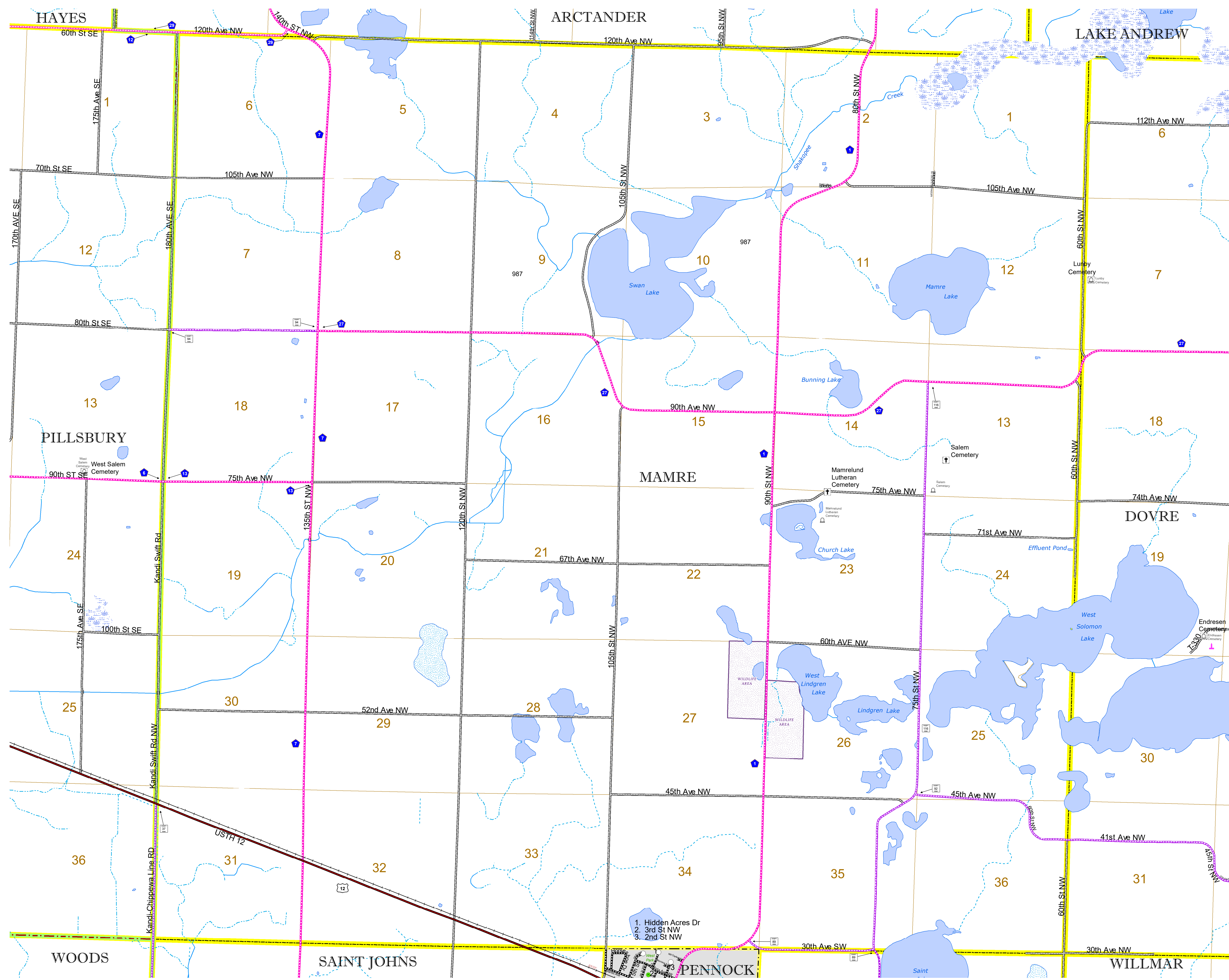


North American Datum
of 1986

ROAD AND ROADWAY FEATURES		BOUNDARY FEATURES	
INTERSTATE	CONCRETE	TRIBAL LAND	STATE OF MINNESOTA
US HIGHWAY	BITUMINOUS	COUNTY	MUNICIPALITY
MN HIGHWAY	GRAVEL	UNORGANIZED TERRITORY	FEDERAL ADJUSTED URBAN AREA (2014)
COUNTY STATE AID HIGHWAY	DIRT/UNIMPROVED	CIVIL TOWNSHIP	CONGRESSIONAL TOWNSHIP
COUNTY ROAD	OTHER	SECTION	MILITARY
TOWNSHIP ROAD	UNKNOWN	MNDOT OFFICE	VOYAGEURS NATIONAL PARK
UNORGANIZED TERRITORY ROAD		HIGHWAY PATROL TRUCK STATION	BOUNDARY WATERS CANOE AREA WILDERNESS
OTHER ROADS		STATE TRAVEL INFORMATION CENTER	STATE PARK
Municipal	RAMP OR CONNECTOR	REST AREA (Full Service)	NATIONAL FOREST
Private	INTERSTATE EXIT	REST AREA (Vault Toilet)	NATIONAL AND STATE FOREST
National Monument	GREAT RIVER ROAD	WAYSIDE (Vault or Pit Toilet)	STATE FOREST
National Wildlife	AVIATION FEATURES	PARK AND RIDE LOT	NATIONAL TRAIL
State Game	COMMERCIAL AIRPORT	PORT OF ENTRY	WILDLIFE REFUGUE AREA
Military	GENERAL AIRPORT	PUBLIC ACCESS POINT	WILDLIFE MANAGEMENT AREA
	AIRSTRIP	MN STATE COLLEGE AND UNIVERSITY SYSTEM (MNSCU)	HYDROLOGIC FEATURES
	SEAPLANE	UNIVERSITY OF MN SYSTEM	RIVER OR STREAM (Perennial)
	AIRPORT RUNWAY	FAIRGROUNDS	LAKE, POND OR RESERVOIR
			STREAM (Intermittent)
			DRAINAGE DITCH
			WETLAND
			ISLAND OR LAND
			REGIONAL WATERSHED



Population (U.S. Census 2010): 385



To request information from this document in an alternative format, call 651-366-4718 or 1-800-657-3774 (Greater Minnesota); 711 or 1-800-627-3529 (Minnesota Relay). You may also send an e-mail to ADArequest.dot@state.mn.us. (Please request at least one week in advance.)