

TOWNSHIP OF NORWAY LAKE

PREPARED BY THE
MINNESOTA DEPARTMENT OF TRANSPORTATION
OFFICE OF TRANSPORTATION SYSTEM MANAGEMENT

IN COOPERATION WITH
U.S. DEPARTMENT OF TRANSPORTATION
FEDERAL HIGHWAY ADMINISTRATION



1 in = 1,600 ft

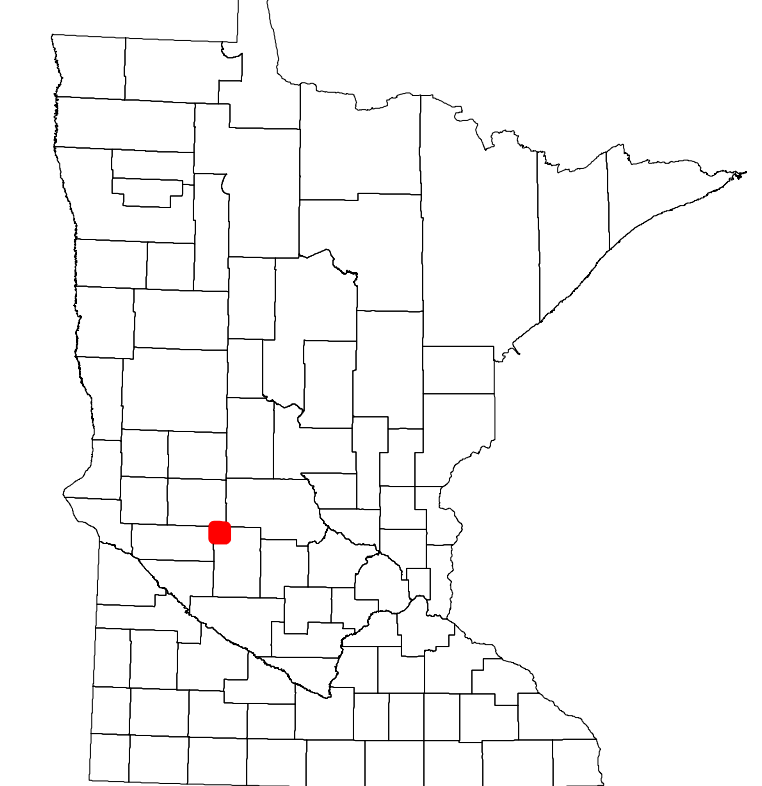
2022

Projection:
Transverse Mercator
NAD 1986
UTM Zone 15

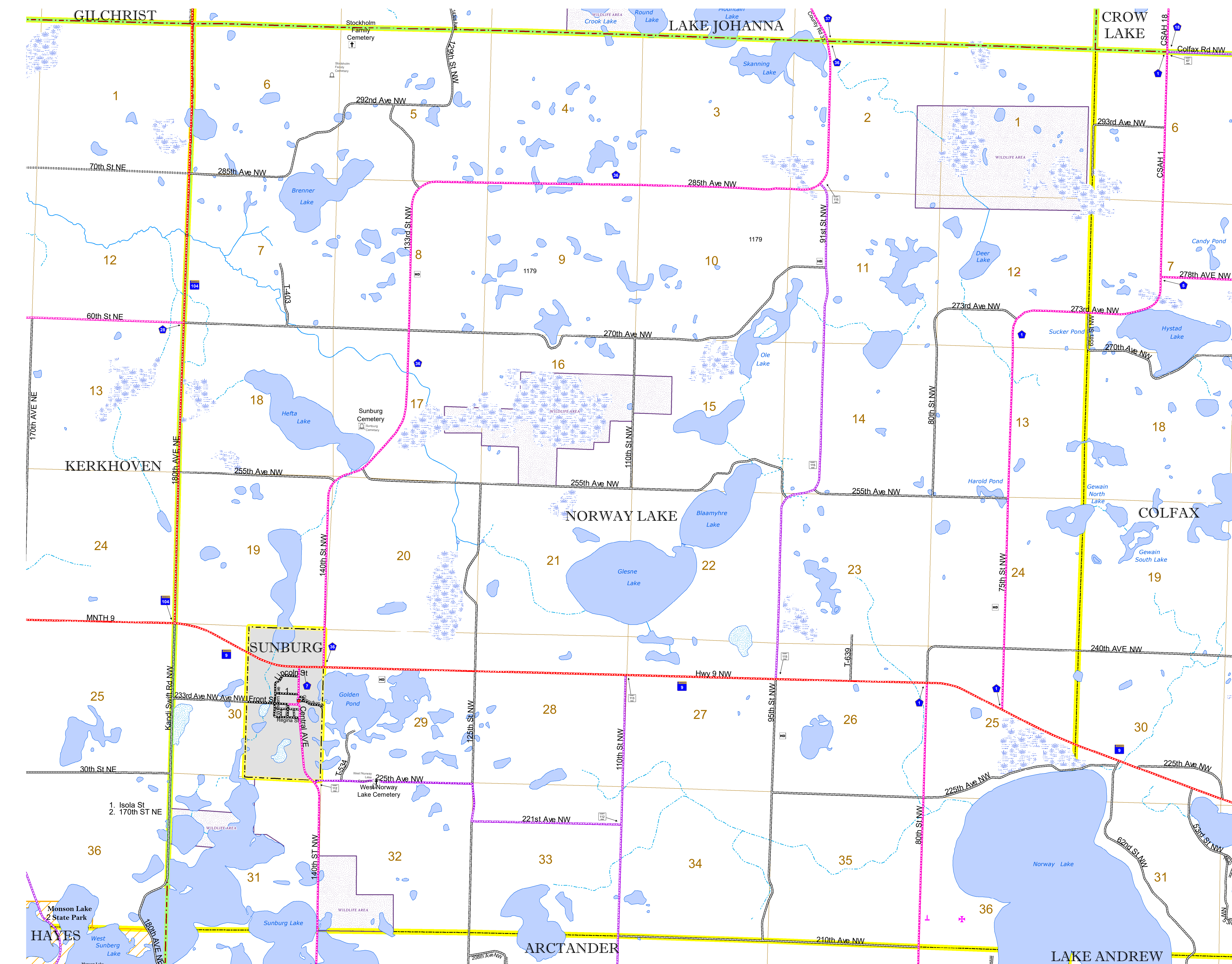


North American Datum
of 1986

ROAD AND ROADWAY FEATURES		BOUNDARY FEATURES	
INTERSTATE	CONCRETE	TRIBAL LAND	STATE OF MINNESOTA
US HIGHWAY	BITUMINOUS	COUNTY	MUNICIPALITY
MN HIGHWAY	GRAVEL	UNINCORPORATED TOWNSHIP	CIVIL TOWNSHIP
COUNTY STATE AID HIGHWAY	DIRT/UNIMPROVED	CONGRESSIONAL TOWNSHIP	SECTION
COUNTY ROAD	OTHER	MILITARY	VOYAGEURS NATIONAL PARK
TOWNSHIP ROAD	UNKNOWN	UNINCORPORATED COMMUNITY	BOUNDARY WATERS CANOE AREA WILDERNESS
UNORGANIZED TERRITORY ROAD			STATE PARK
OTHER ROADS:			REGIONAL PARK
Municipal	RAMP OR CONNECTOR		NATIONAL FOREST
Private	INTERSTATE EXIT		NATIONAL AND STATE FOREST
National Monument	AVIATION FEATURES		STATE FOREST
National Wildlife	COMMERCIAL AIRPORT		WILDLIFE REFUGUE AREA
State Park	GENERAL AIRPORT		WILDLIFE MANAGEMENT AREA
Preserve	AIRSTRIP		HYDROLOGIC FEATURES
	SEAPLANE		RIVER OR STREAM (PERMANENT)
	AIRPORT RUNWAY		LAKE, POND OR RESERVOIR
			STREAM (INTERMITTENT)
			DRAINAGE DITCH
			WETLAND
			ISLAND OR LAND
			REGIONAL WATERSHED



Population (U.S. Census 2010): 274



To request information from this document in an alternative format, call 651-366-4718 or 1-800-657-3774 (Greater Minnesota); 711 or 1-800-627-3529 (Minnesota Relay). You may also send an e-mail to ADRequest.dot@state.mn.us. (Please request at least one week in advance.)