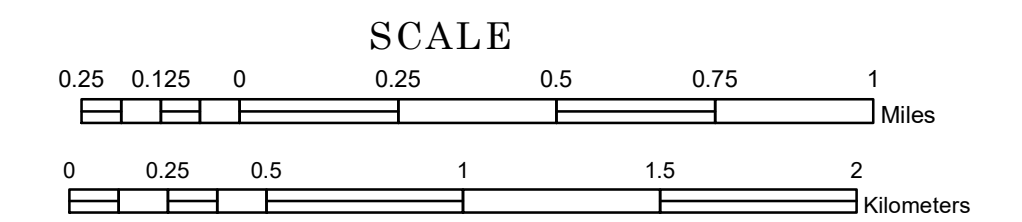


TOWNSHIP OF GARFIELD

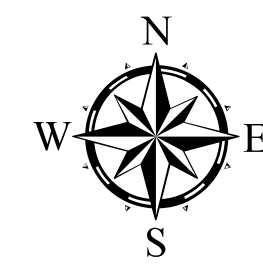
PREPARED BY THE
MINNESOTA DEPARTMENT OF TRANSPORTATION
OFFICE OF TRANSPORTATION SYSTEM MANAGEMENT

IN COOPERATION WITH
U.S. DEPARTMENT OF TRANSPORTATION
FEDERAL HIGHWAY ADMINISTRATION

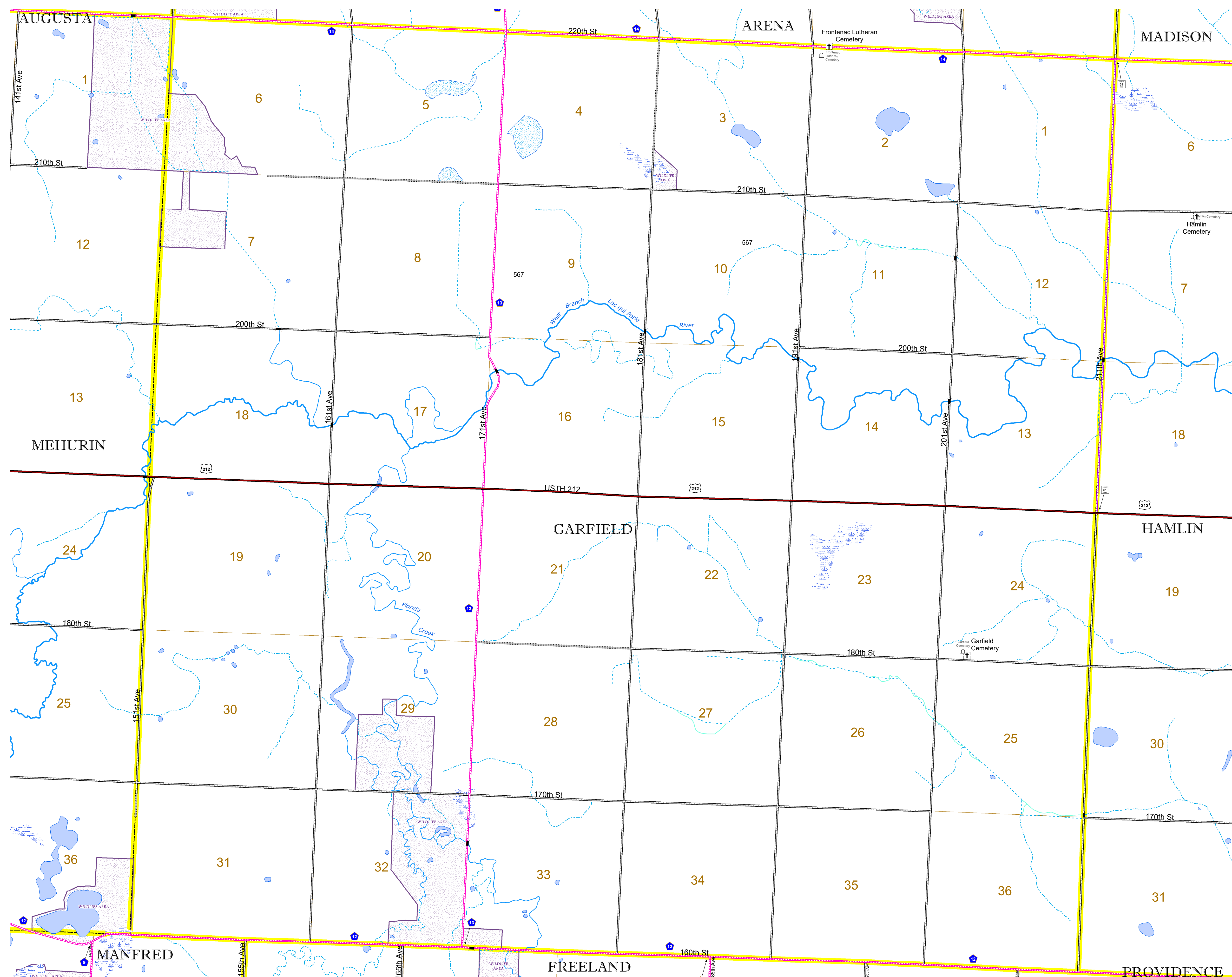


2022

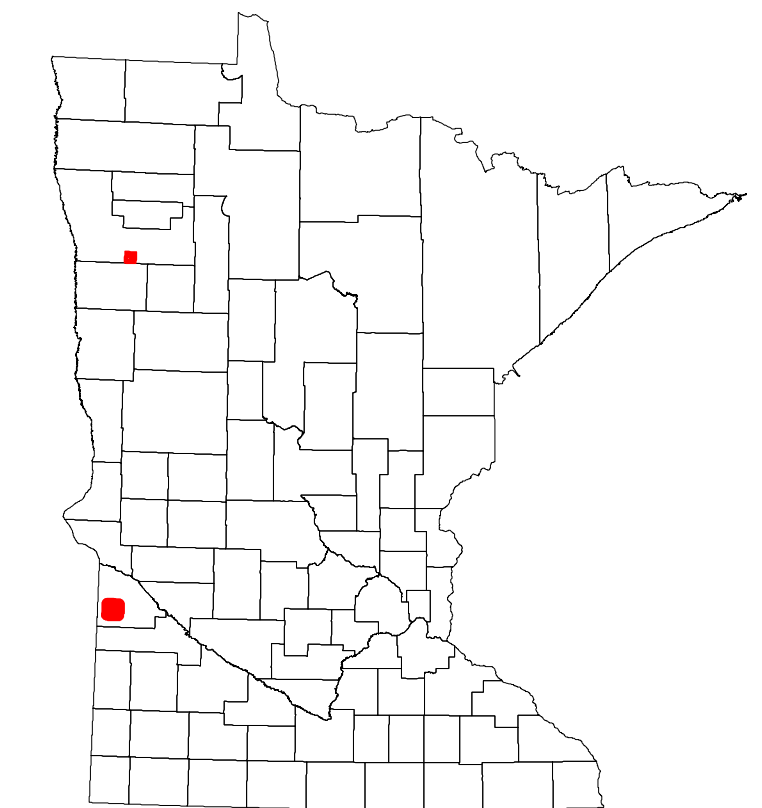
Projection:
Transverse Mercator
NAD 1986
UTM Zone 15



North American Datum
of 1986



ROAD AND ROADWAY FEATURES		RAILROAD AND RAILWAY FEATURES		AVIATION FEATURES	
INTERSTATE	CONCRETE	EMPIRE BUILDER STATION (AMTRAK)	COMMERCIAL AIRPORT	GENERAL AIRPORT	TRIBAL LAND
US HIGHWAY	BITUMINOUS	NORTHSTAR STATION (COMMUTER)	AIRSTRIP	AIRSTRIP	STATE OF MINNESOTA
MN HIGHWAY	GRAVEL	LIGHT RAIL	SEAPLANE	SEAPLANE	COUNTY
COUNTY STATE AID HIGHWAY	DIRT/UNIMPROVED	BLUE LINE	AIRPORT RUNWAY	AIRPORT RUNWAY	MUNICIPALITY
COUNTY ROAD	OTHER	GREEN LINE	BOUNDARY FEATURES	BOUNDARY FEATURES	UNINCORPORATED TOWNSHIP
TOWNSHIP ROAD	UNKNOWN	LONG BRIDGE (200' OR GREATER SPAN)	STATE OF MINNESOTA	STATE OF MINNESOTA	FEDERAL ADJUSTED URBAN AREA (2014)
UNORGANIZED TERRITORY ROAD		MAJOR BRIDGE (20' TO 200' SPAN)	COUNTY	COUNTY	CIVIL TOWNSHIP
OTHER ROADS		MINOR BRIDGE (5' TO 20' SPAN)	MUNICIPALITY	MUNICIPALITY	CONGRESSIONAL TOWNSHIP
MUNICIPAL		DAM	UNINCORPORATED TOWNSHIP	UNINCORPORATED TOWNSHIP	SECTION
PRIVATE		LOCK-AND-DAM	CIVIL TOWNSHIP	CIVIL TOWNSHIP	MILITARY
NATIONAL MONUMENT			CONGRESSIONAL TOWNSHIP	CONGRESSIONAL TOWNSHIP	VOYAGEURS NATIONAL PARK
NATIONAL WILDLIFE REFUGES			SECTION	SECTION	BOUNDARY WATERS CANOE AREA WILDERNESS
STATE FOREST			MILITARY	MILITARY	STATE PARK
STATE FOREST			VOYAGEURS NATIONAL PARK	VOYAGEURS NATIONAL PARK	REGIONAL PARK
STATE FOREST			BOUNDARY WATERS CANOE AREA WILDERNESS	BOUNDARY WATERS CANOE AREA WILDERNESS	NATIONAL FOREST
STATE FOREST			STATE PARK	STATE PARK	NATIONAL AND STATE FOREST
STATE FOREST			REGIONAL PARK	REGIONAL PARK	STATE FOREST
STATE FOREST			NATIONAL FOREST	NATIONAL FOREST	NATIONAL TRAIL
STATE FOREST			NATIONAL AND STATE FOREST	NATIONAL AND STATE FOREST	WILDLIFE REFUGE AREA
STATE FOREST			STATE FOREST	STATE FOREST	WILDLIFE MANAGEMENT AREA
STATE FOREST			NATIONAL TRAIL	NATIONAL TRAIL	HYDROLOGIC FEATURES
STATE FOREST			WILDLIFE REFUGE AREA	WILDLIFE REFUGE AREA	RIVER OR STREAM (PERENNIAL)
STATE FOREST			WILDLIFE MANAGEMENT AREA	WILDLIFE MANAGEMENT AREA	LAKE, POND OR RESERVOIR
STATE FOREST			HYDROLOGIC FEATURES	HYDROLOGIC FEATURES	STREAM (INTERMITTENT)
STATE FOREST			RIVER OR STREAM (PERENNIAL)	RIVER OR STREAM (PERENNIAL)	DRAINAGE DITCH
STATE FOREST			LAKE, POND OR RESERVOIR	LAKE, POND OR RESERVOIR	WETLAND
STATE FOREST			STREAM (INTERMITTENT)	STREAM (INTERMITTENT)	ISLAND OR LAND
STATE FOREST			DRAINAGE DITCH	DRAINAGE DITCH	REGIONAL WATERSHED
STATE FOREST			WETLAND	WETLAND	
STATE FOREST			ISLAND OR LAND	ISLAND OR LAND	
STATE FOREST			REGIONAL WATERSHED	REGIONAL WATERSHED	
STATE FOREST					



Population (U.S. Census 2010): 145

To request information from this document in an alternative format, call 651-366-4718 or 1-800-657-3774 (Greater Minnesota); 711 or 1-800-627-3529 (Minnesota Relay). You may also send an e-mail to ADRequest.dot@state.mn.us. (Please request at least one week in advance.)