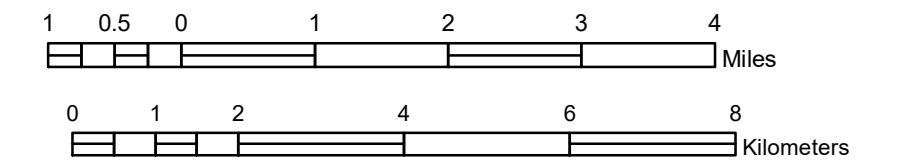


TOWNSHIP OF STONY RIVER

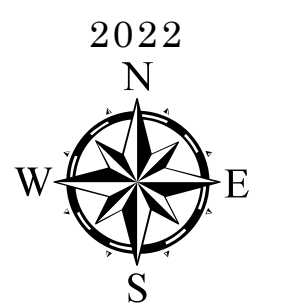
PREPARED BY THE
MINNESOTA DEPARTMENT OF TRANSPORTATION
OFFICE OF TRANSPORTATION SYSTEM MANAGEMENT

IN COOPERATION WITH
U.S. DEPARTMENT OF TRANSPORTATION
FEDERAL HIGHWAY ADMINISTRATION

SCALE



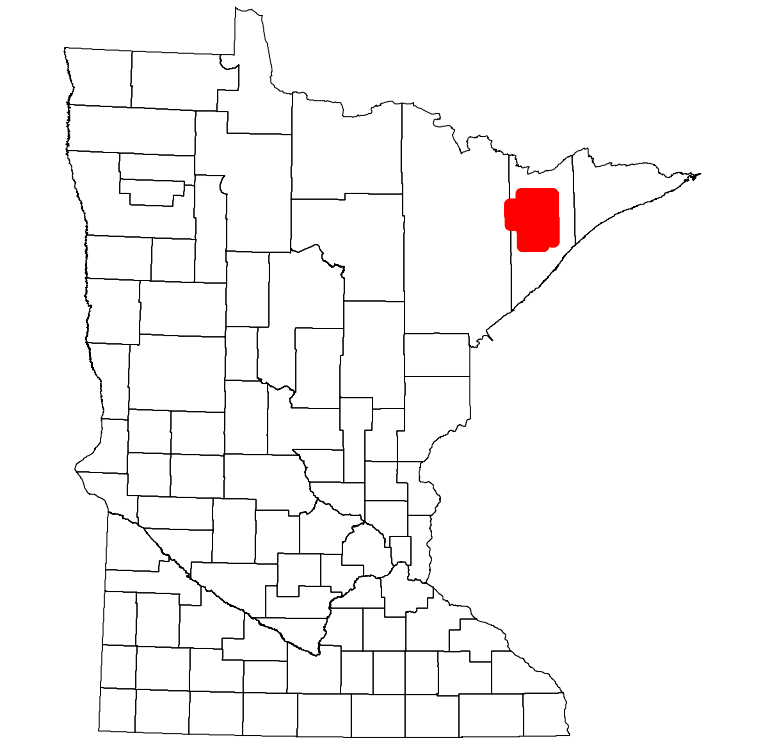
1 in = 7,600 ft



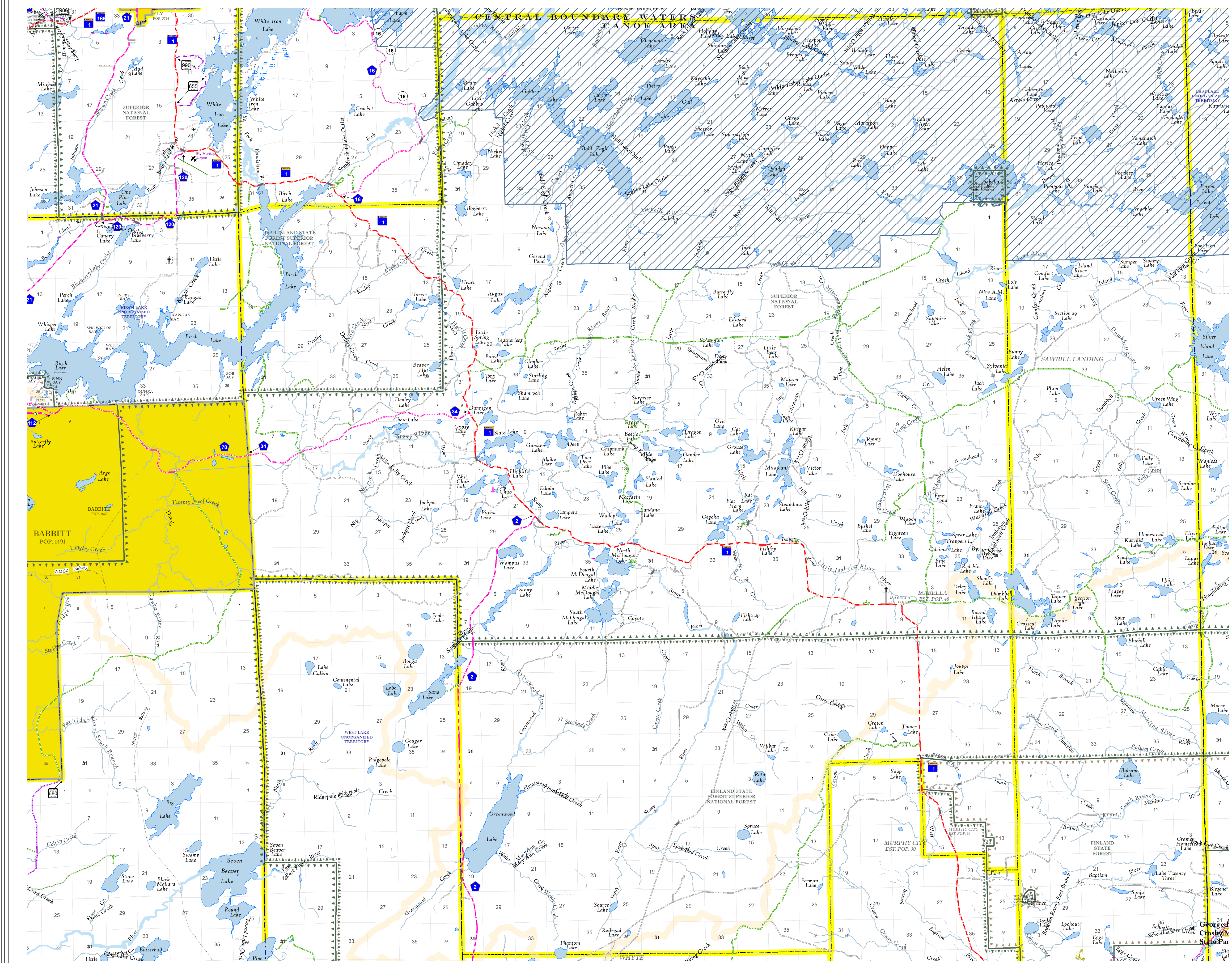
Projection:
Transverse Mercator
NAD 1986
UTM Zone 15

North American Datum
of 1986

| ROAD AND ROADWAY FEATURES | | PUBLIC SERVICE FEATURES | |
|-------------------------------------|--|---------------------------------------|--|
| INTERSTATE | | MNDOT OFFICE | |
| UNITED STATES HIGHWAY | | MNDOT TRUCK STATION | |
| MINNESOTA TRUNK HIGHWAY | | HIGHWAY PATROL DISTRICT OFFICE | |
| COUNTY STATE AID HIGHWAY | | STATE TRAVEL INFORMATION CENTER | |
| COUNTY ROAD | | REST AREA (Full Service) | |
| MUNICIPAL STATE AID STREET | | REST AREA (Fast Food) | |
| MUNICIPAL STREET | | WAYSIDE (Walk or Pr. Trail) | |
| PRIVATE STREET/ROAD | | LOCAL PARK | |
| TOWNSHIP ROAD | | PUBLIC ACCESS POINT | |
| UNORGANIZED TERRITORY ROAD | | FARMPROUDS | |
| INDIAN SERVICE ROAD | | PORT OF ENTRY | |
| RAMP OR CONNECTOR | | PARK AND RIDE LOT | |
| INTERSTATE EXIT | | PUBLIC UNIVERSITY OR COLLEGE | |
| GREAT RIVER ROAD | | TOWN HALL | |
| ARMORY | | | |
| OTHER ROADS | | CULTURAL FEATURES | |
| Native Path | | State Historical Marker | |
| Arroyo | | Historic District | |
| Other Road | | Historic Site | |
| Concrete | | Monument | |
| Bituminous | | Tribal Land | |
| Gravel | | County | |
| Dirt/Unimproved | | Municipality | |
| Unknown | | Adjacent Municipality | |
| COMMERCIAL AIRPORT | | FEDERAL ADJUSTED URBAN AREA (2014) | |
| GENERAL AIRPORT | | MILITARY | |
| ARSTRIP | | VOYAGEURS NATIONAL PARK | |
| SEAPLANE | | BOUNDARY WATERS CANOE AREA WILDERNESS | |
| AIRPORT RUNWAY | | STATE PARK | |
| | | REGIONAL PARK | |
| | | NATIONAL FOREST | |
| | | NATIONAL AND STATE FOREST | |
| | | STATE FOREST | |
| | | NATIONAL TRAIL | |
| | | WILDLIFE REFUGUE AREA | |
| | | WILDLIFE MANAGEMENT AREA | |
| | | RIVER OR STREAM (Perennial) | |
| | | LAKE, POND OR RESERVOIR | |
| | | STREAM (Intermittent) | |
| | | DRAINAGE DITCH | |
| | | WETLAND | |
| | | ISLAND OR LAND | |
| | | REGIONAL WATERSHED | |
| | | | |
| RAILROAD AND RAILWAY FEATURES | | CITY CENTERS | |
| RAILWAY | | TRIBAL GOVERNMENT CENTER | |
| PASSENGER TRAIN STATION | | CITY CENTER | |
| LIGHT RAIL | | LOCALLY KNOWN PLACE | |
| LIGHT RAIL STATION | | UNINCORPORATED COMMUNITY | |
| INFRASTRUCTURE FEATURES | | | |
| LONG BRIDGE (200' or Greater Spans) | | | |
| MAJOR BRIDGE (20' to 200' Spans) | | | |
| MINOR BRIDGE (5' to 20' Spans) | | | |
| DAM | | | |
| LOCK AND DAM | | | |



Population (U.S. Census 2010): 173



To request information from this document in an alternative format, call 651-366-4718 or 1-800-657-3774 (Greater Minnesota); 711 or 1-800-627-3529 (Minnesota Relay). You may also send an e-mail to ADarequest.dot@state.mn.us. (Please request at least one week in advance.)