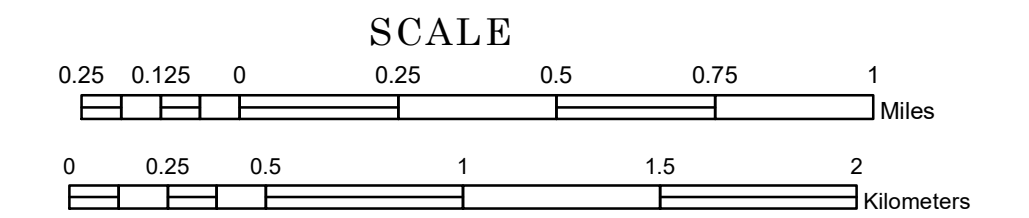


# TOWNSHIP OF ASH LAKE

PREPARED BY THE  
MINNESOTA DEPARTMENT OF TRANSPORTATION  
OFFICE OF TRANSPORTATION SYSTEM MANAGEMENT

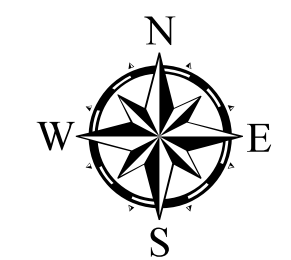
IN COOPERATION WITH  
U.S. DEPARTMENT OF TRANSPORTATION  
FEDERAL HIGHWAY ADMINISTRATION



1 in = 1,600 ft

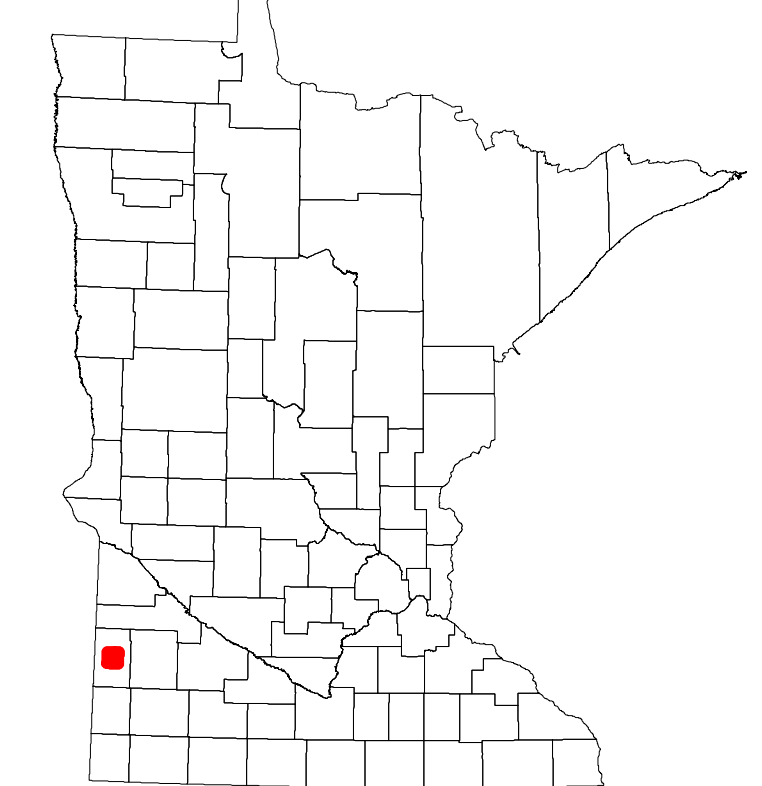
2023

Projection:  
Transverse Mercator  
NAD 1986  
UTM Zone 15

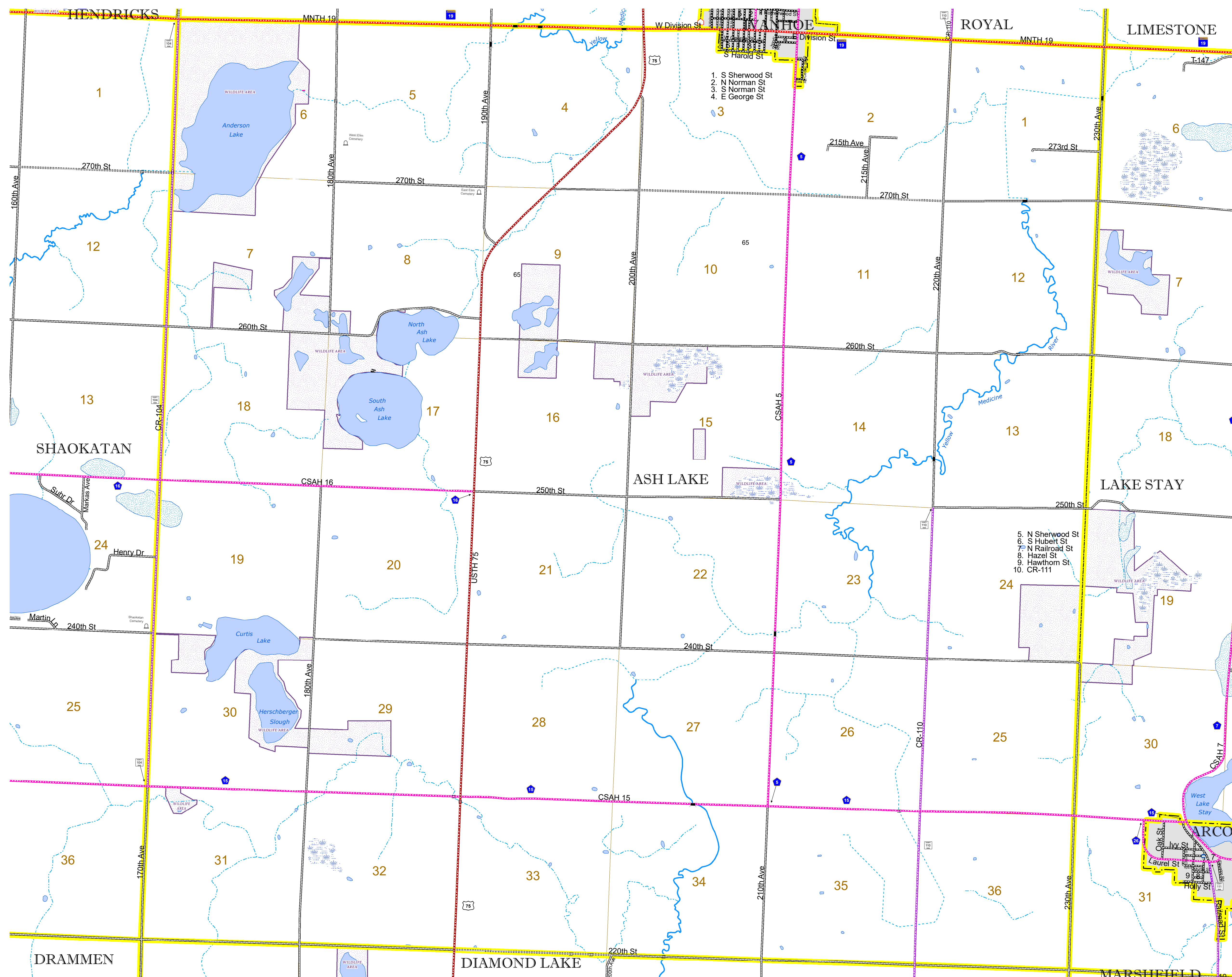


North American Datum  
of 1986

| ROAD AND ROADWAY FEATURES                                 |                                    | AVIATION FEATURES       |                                       |
|---|------------------------------------|-------------------------|---------------------------------------|
| INTERSTATE  | CONCRETE                           | COMMERCIAL AIRPORT      | GENERAL AIRPORT                       |
| US HIGHWAY  | BITUMINOUS                         | AIRSTRIP                | SEAPLANE                              |
| MN HIGHWAY  | GRAVEL                             | AIRPORT RUNWAY          |                                       |
| COUNTY STATE AID HIGHWAY                                  | DIRT/UNIMPROVED                    |                         |                                       |
| COUNTY ROAD   | OTHER                              |                         |                                       |
| TOWNSHIP ROAD   | UNKNOWN                            |                         |                                       |
| UNORGANIZED TERRITORY ROAD                                |                                    |                         |                                       |
| OTHER ROADS   |                                    |                         |                                       |
| Municipal Private National Monument State Forest          |                                    |                         |                                       |
| Nature Service National Park National Wildlife State Game |                                    |                         |                                       |
| Mulden National Forest State Park Preserve                |                                    |                         |                                       |
| RAILROAD AND RAILWAY FEATURES                             |                                    | BOUNDARY FEATURES       |                                       |
| EMPIRE BUILDER STATION (AMTRAK)                           | TRIBAL LAND                        | STATE OF MINNESOTA      | COUNTY                                |
| NORTHSTAR STATION (COMPUTER)                              | STATE OF MINNESOTA                 | MUNICIPALITY            | UNORGANIZED TERRITORY                 |
| LIGHT RAIL  | FEDERAL ADJUSTED URBAN AREA (2014) | CIVIL TOWNSHIP          | CONGRESSIONAL TOWNSHIP                |
| BLUE LINE   |                                    | SECTION                 | MILITARY                              |
| GREEN LINE  |                                    | VOYAGEURS NATIONAL PARK | BOUNDARY WATERS CANOE AREA WILDERNESS |
| INFRASTRUCTURE FEATURES                                   |                                    | STATE PARK              | REGIONAL PARK                         |
| LONG BRIDGE (200' OR GREATER SPAN)                        |                                    | NATIONAL FOREST         | NATIONAL AND STATE FOREST             |
| MAJOR BRIDGE (20' TO 200' SPAN)                           |                                    | STATE FOREST            | NATIONAL TRAIL                        |
| MINOR BRIDGE (5' TO 20' SPAN)                             |                                    | WILDLIFE REFUGUE AREA   | WILDLIFE MANAGEMENT AREA              |
| DAM   |                                    | HYDROLOGIC FEATURES     | RIVER OR STREAM (PERMANENT)           |
| LOCK AND DAM  |                                    | LAKE, POND OR RESERVOIR | STREAM (INTERMITTENT)                 |
| CITY CENTERS  |                                    | STATE HISTORICAL MARKER | DRAINAGE DITCH                        |
| STATE CAPITAL   | COUNTY SEAT                        | HISTORIC DISTRICT       | WETLAND                               |
| CITY CENTER   | CITY CENTER                        | HISTORIC SITE           | ISLAND OR LAND                        |
| UNINCORPORATED COMMUNITY                                  |                                    | MONUMENT                | REGIONAL WATERSHED                    |
| PUBLIC SERVICE FEATURES                                   |                                    |                         |                                       |
| MNDOT OFFICE  |                                    |                         |                                       |
| MNDOT TRUCK STATION                                       |                                    |                         |                                       |
| HIGHWAY PATROL DISTRICT OFFICE                            |                                    |                         |                                       |
| STATE TRAVEL INFORMATION CENTER                           |                                    |                         |                                       |
| REST AREA (FULL SERVICE)                                  |                                    |                         |                                       |
| REST AREA (VAULT TOILET)                                  |                                    |                         |                                       |
| WAYSIDE (VAULT OR PIT TOILET)                             |                                    |                         |                                       |
| PARK AND RIDE LOT   |                                    |                         |                                       |
| PORT OF ENTRY   |                                    |                         |                                       |
| PUBLIC ACCESS POINT                                       |                                    |                         |                                       |
| MN STATE COLLEGE AND UNIVERSITY SYSTEM (MNSCU)            |                                    |                         |                                       |
| UNIVERSITY OF MN SYSTEM                                   |                                    |                         |                                       |
| FAIRGROUNDS   |                                    |                         |                                       |
| CULTURAL FEATURES   |                                    |                         |                                       |
| STATE HISTORICAL MARKER                                   |                                    |                         |                                       |
| HISTORIC DISTRICT   |                                    |                         |                                       |
| HISTORIC SITE   |                                    |                         |                                       |
| MONUMENT  |                                    |                         |                                       |



Population (U.S. Census 2010): 151



To request information from this document in an alternative format, call 651-366-4718 or 1-800-657-3774 (Greater Minnesota); 711 or 1-800-627-3529 (Minnesota Relay). You may also send an e-mail to ADRequest.dot@state.mn.us. (Please request at least one week in advance.)