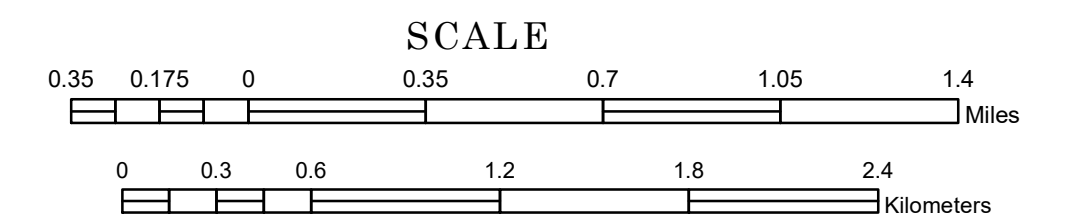


# TOWNSHIP OF EAST VALLEY

PREPARED BY THE  
MINNESOTA DEPARTMENT OF TRANSPORTATION  
OFFICE OF TRANSPORTATION SYSTEM MANAGEMENT

IN COOPERATION WITH  
U.S. DEPARTMENT OF TRANSPORTATION  
FEDERAL HIGHWAY ADMINISTRATION

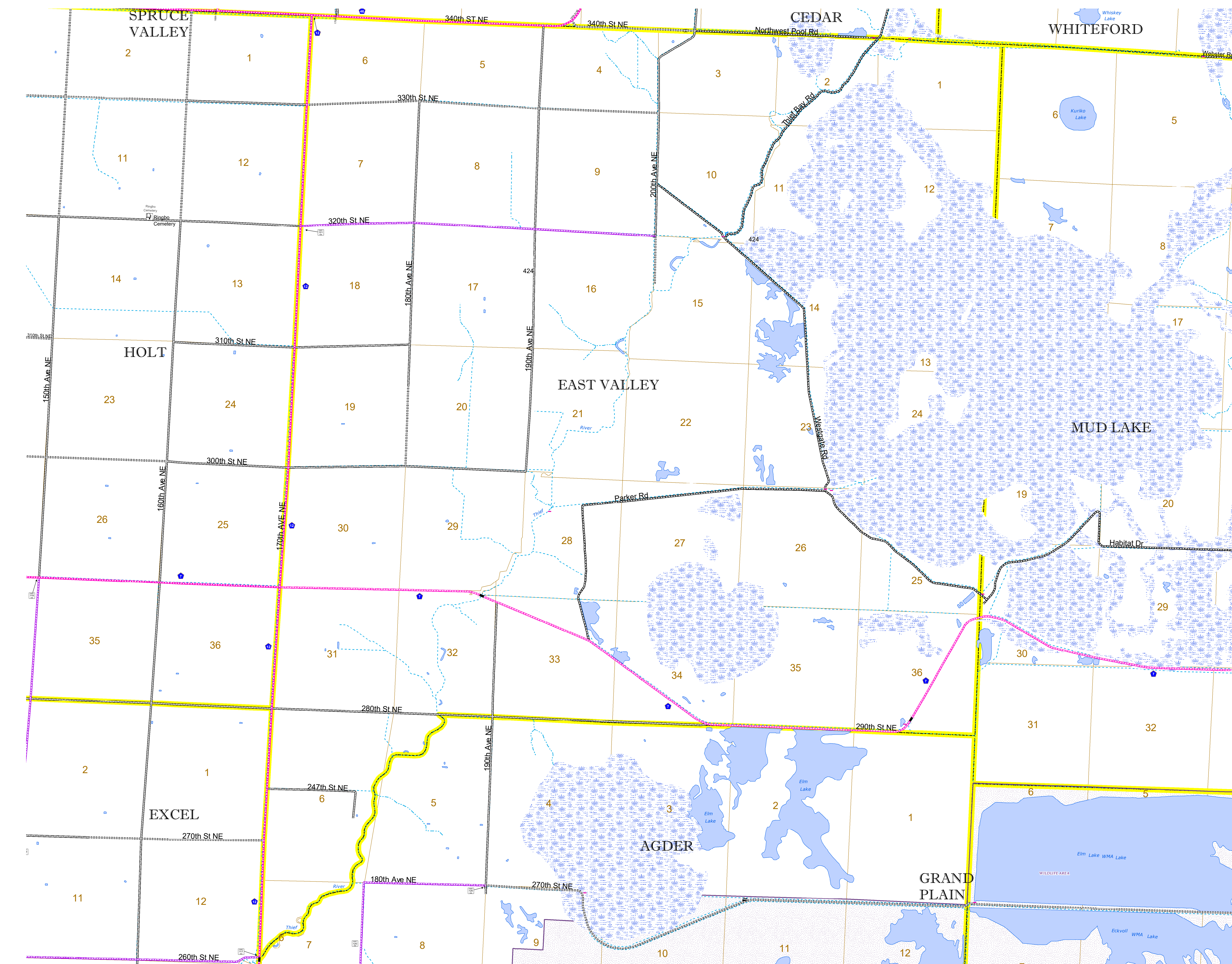


2022

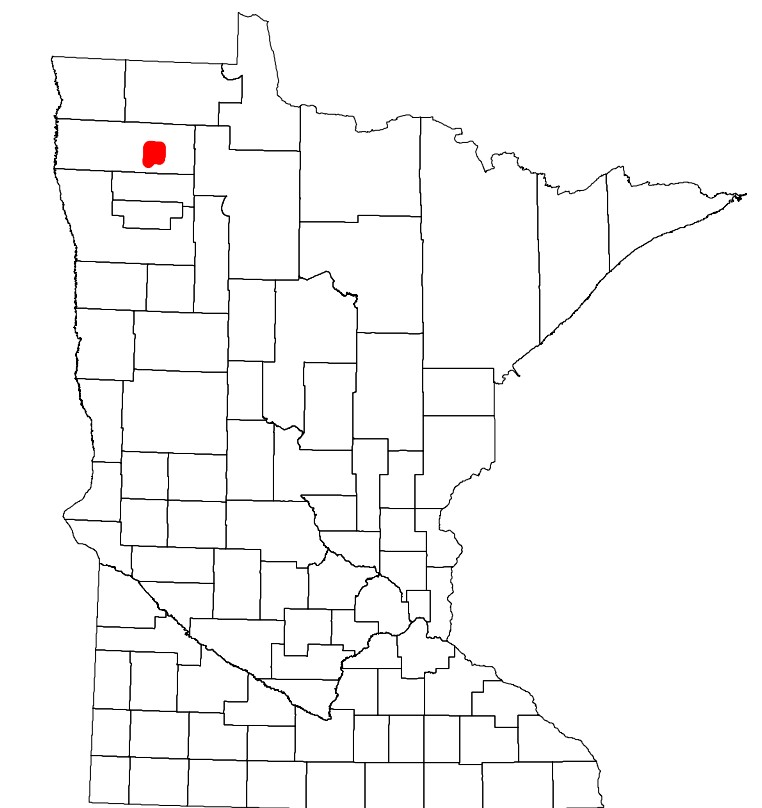
Projection:  
Transverse Mercator  
NAD 1986  
UTM Zone 15



North American Datum  
of 1986



ROAD AND ROADWAY FEATURES		AVIATION FEATURES	
INTERSTATE	CONCRETE	COMMERCIAL AIRPORT	GENERAL AIRPORT
US HIGHWAY	BITUMINOUS	AIRSTRIP	SEAPLANE
MN HIGHWAY	GRAVEL	AIRPORT RUNWAY	BOUNDARY FEATURES
COUNTY STATE AID HIGHWAY	DIRT/UNIMPROVED	TRIAL LAND	STATE OF MINNESOTA
COUNTY ROAD	OTHER	COUNTY	MUNICIPALITY
TOWNSHIP ROAD	UNKNOWN	UNINCORPORATED TOWNSHIP	CIVIL TOWNSHIP
UNORGANIZED TERRITORY ROAD		FEDERAL ADJUSTED URBAN AREA (2014)	CONGRESSIONAL TOWNSHIP
OTHER ROADS		CITY TOWNSHIP	SECTION
Municipal	RAMP OR CONNECTOR	MILITARY	VOYAGEURS NATIONAL PARK
Private	INTERSTATE EXIT	BOUNDARY WATERS CANOE AREA WILDERNESS	STATE PARK
Nature Service	GREAT RIVER ROAD	NATIONAL FOREST	REGIONAL PARK
Mulden		UNINCORPORATED TOWNSHIP	NATIONAL AND STATE FOREST
		CITY CENTER	STATE FOREST
		CITY SEAT	WILDLIFE REFUGUE AREA
		CITY CENTER	WILDLIFE MANAGEMENT AREA
		UNINCORPORATED COMMUNITY	HYDROLOGIC FEATURES
			RIVER OR STREAM (PERENNIAL)
			LAKE, POND OR RESERVOIR
			STREAM (INTERMITTENT)
			DRAINAGE DITCH
			WETLAND
			ISLAND OR LAND
			REGIONAL WATERSHED



Population (U.S. Census 2010): 43

To request information from this document in an alternative format, call 651-366-4718 or 1-800-657-3774 (Greater Minnesota); 711 or 1-800-627-3529 (Minnesota Relay). You may also send an e-mail to ADArequest.dot@state.mn.us. (Please request at least one week in advance.)