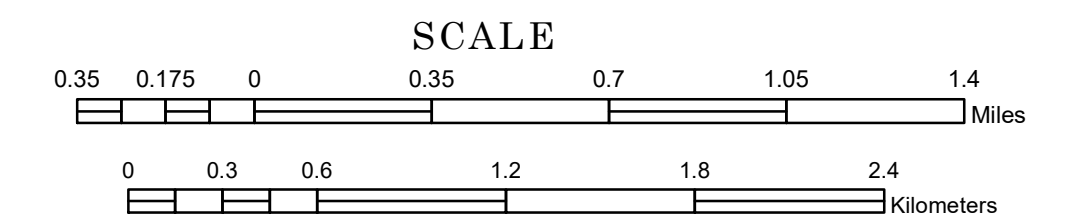


TOWNSHIP OF HUNTLY

PREPARED BY THE
MINNESOTA DEPARTMENT OF TRANSPORTATION
OFFICE OF TRANSPORTATION SYSTEM MANAGEMENT

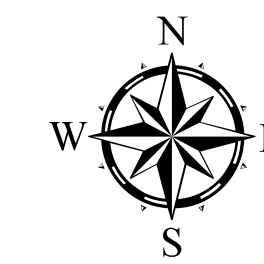
IN COOPERATION WITH
U.S. DEPARTMENT OF TRANSPORTATION
FEDERAL HIGHWAY ADMINISTRATION



1 in = 2,000 ft

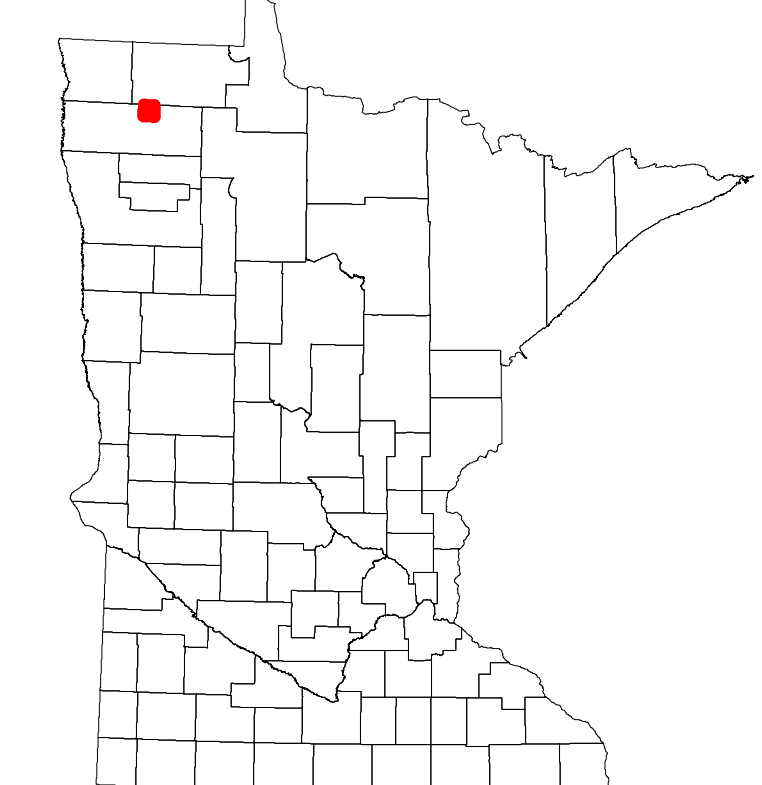
2022

Projection:
Transverse Mercator
NAD 1986
UTM Zone 15

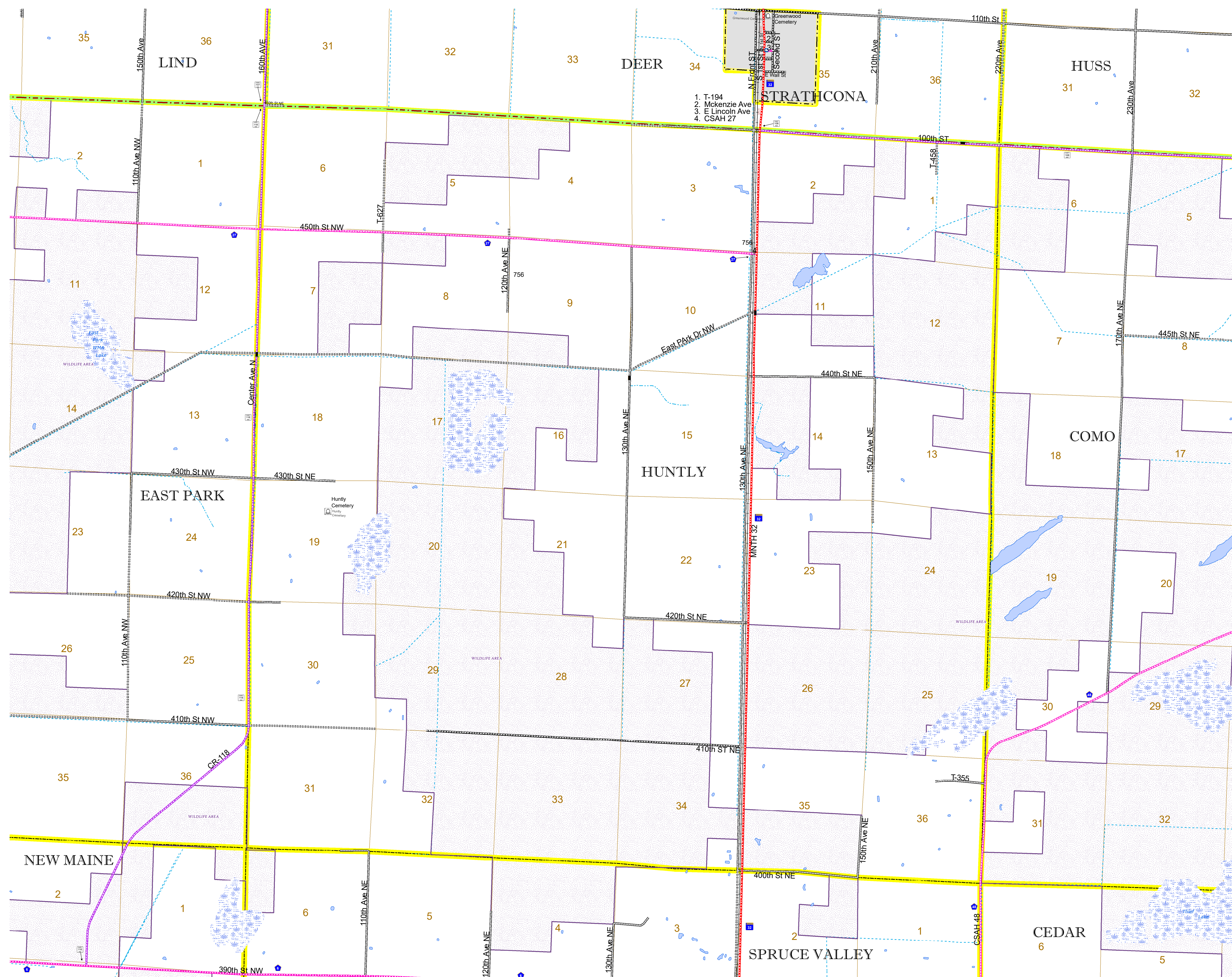


North American Datum
of 1986

ROAD AND ROADWAY FEATURES		AVIATION FEATURES	
INTERSTATE	CONCRETE	COMMERCIAL AIRPORT	GENERAL AIRPORT
US HIGHWAY	BITUMINOUS	NORTHSTAR STATION (COMMUTER)	AIRSTRIP
MN HIGHWAY	GRAVEL	SEAPLANE	SEAPLANE
COUNTY STATE AID HIGHWAY	DIRT/UNIMPROVED	AIRPORT RUNWAY	AIRPORT RUNWAY
COUNTY ROAD	OTHER		
TOWNSHIP ROAD	UNKNOWN		
UNORGANIZED TERRITORY ROAD			
OTHER ROADS			
Municipal	RAMP OR CONNECTOR		
Private	INTERSTATE EXIT		
National Monument	GREAT RIVER ROAD		
National Park			
National Wildlife			
State Game			
State Park			
Preserve			
RAILROAD AND RAILWAY FEATURES		BOUNDARY FEATURES	
EMPIRE BUILDER STATION (AMTRAK)	TRIBAL LAND	STATE OF MINNESOTA	COUNTY
NORTHSTAR STATION (COMMUTER)	STATE OF MINNESOTA	MUNICIPALITY	MUNICIPALITY
LIGHT RAIL	UNORGANIZED TERRITORY	UNORGANIZED TERRITORY	UNORGANIZED TERRITORY
BLUE LINE	FEDERAL ADJUSTED URBAN AREA (2014)	CIVIL TOWNSHIP	CIVIL TOWNSHIP
GREEN LINE	CIVIL TOWNSHIP	CONGRESSIONAL TOWNSHIP	CONGRESSIONAL TOWNSHIP
		SECTION	SECTION
		MILITARY	MILITARY
		VOYAGEURS NATIONAL PARK	VOYAGEURS NATIONAL PARK
		BOUNDARY WATERS CANOE AREA WILDERNESS	BOUNDARY WATERS CANOE AREA WILDERNESS
		STATE PARK	STATE PARK
		REGIONAL PARK	REGIONAL PARK
		NATIONAL FOREST	NATIONAL FOREST
		NATIONAL AND STATE FOREST	NATIONAL AND STATE FOREST
		STATE FOREST	STATE FOREST
		NATIONAL TRAIL	NATIONAL TRAIL
		WILDLIFE REFUGUE AREA	WILDLIFE REFUGUE AREA
		WILDLIFE MANAGEMENT AREA	WILDLIFE MANAGEMENT AREA
		HYDROLOGIC FEATURES	
		RIVER OR STREAM (PERMANENT)	RIVER OR STREAM (PERMANENT)
		LAKE, POND OR RESERVOIR	LAKE, POND OR RESERVOIR
		STREAM (INTERMITTENT)	STREAM (INTERMITTENT)
		DRAINAGE DITCH	DRAINAGE DITCH
		WETLAND	WETLAND
		ISLAND OR LAND	ISLAND OR LAND
		REGIONAL WATERSHED	REGIONAL WATERSHED
CITY CENTERS			
STATE CAPITAL	STATE CAPITAL		
COUNTY SEAT	COUNTY SEAT		
CITY CENTER	CITY CENTER		
UNINCORPORATED COMMUNITY	UNINCORPORATED COMMUNITY		
PUBLIC SERVICE FEATURES			
MNDOT OFFICE	MNDOT OFFICE		
MNDOT TRUCK STATION	MNDOT TRUCK STATION		
HIGHWAY PATROL DISTRICT OFFICE	HIGHWAY PATROL DISTRICT OFFICE		
STATE TRAVEL INFORMATION CENTER	STATE TRAVEL INFORMATION CENTER		
REST AREA (FULL SERVICE)	REST AREA (FULL SERVICE)		
REST AREA (VAULT TOILET)	REST AREA (VAULT TOILET)		
WAYSIDE (VAULT OR PIT TOILET)	WAYSIDE (VAULT OR PIT TOILET)		
PARK AND RIDE LOT	PARK AND RIDE LOT		
PORT OF ENTRY	PORT OF ENTRY		
PUBLIC ACCESS POINT	PUBLIC ACCESS POINT		
MN STATE COLLEGE AND UNIVERSITY SYSTEM (MNSCU)	MN STATE COLLEGE AND UNIVERSITY SYSTEM (MNSCU)		
UNIVERSITY OF MN SYSTEM	UNIVERSITY OF MN SYSTEM		
FAIRGROUNDS	FAIRGROUNDS		
CULTURAL FEATURES			
STATE HISTORICAL MARKER	STATE HISTORICAL MARKER		
HISTORIC DISTRICT	HISTORIC DISTRICT		
HISTORIC SITE	HISTORIC SITE		
MONUMENT	MONUMENT		



Population (U.S. Census 2010): 77



To request information from this document in an alternative format, call 651-366-4718 or 1-800-657-3774 (Greater Minnesota); 711 or 1-800-627-3529 (Minnesota Relay). You may also send an e-mail to ADARquest.dot@state.mn.us. (Please request at least one week in advance.)