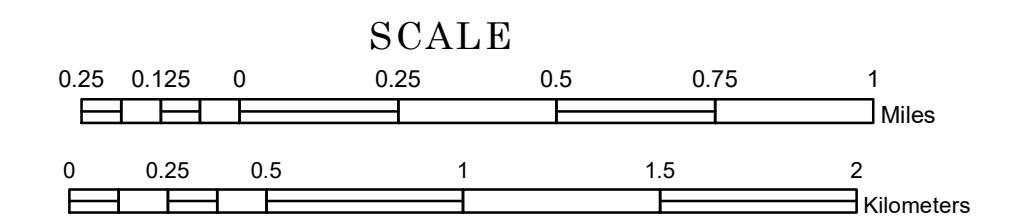


TOWNSHIP OF CENTER CREEK

PREPARED BY THE
MINNESOTA DEPARTMENT OF TRANSPORTATION
OFFICE OF TRANSPORTATION SYSTEM MANAGEMENT

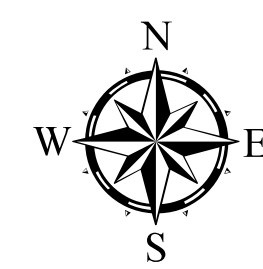
IN COOPERATION WITH
U.S. DEPARTMENT OF TRANSPORTATION
FEDERAL HIGHWAY ADMINISTRATION



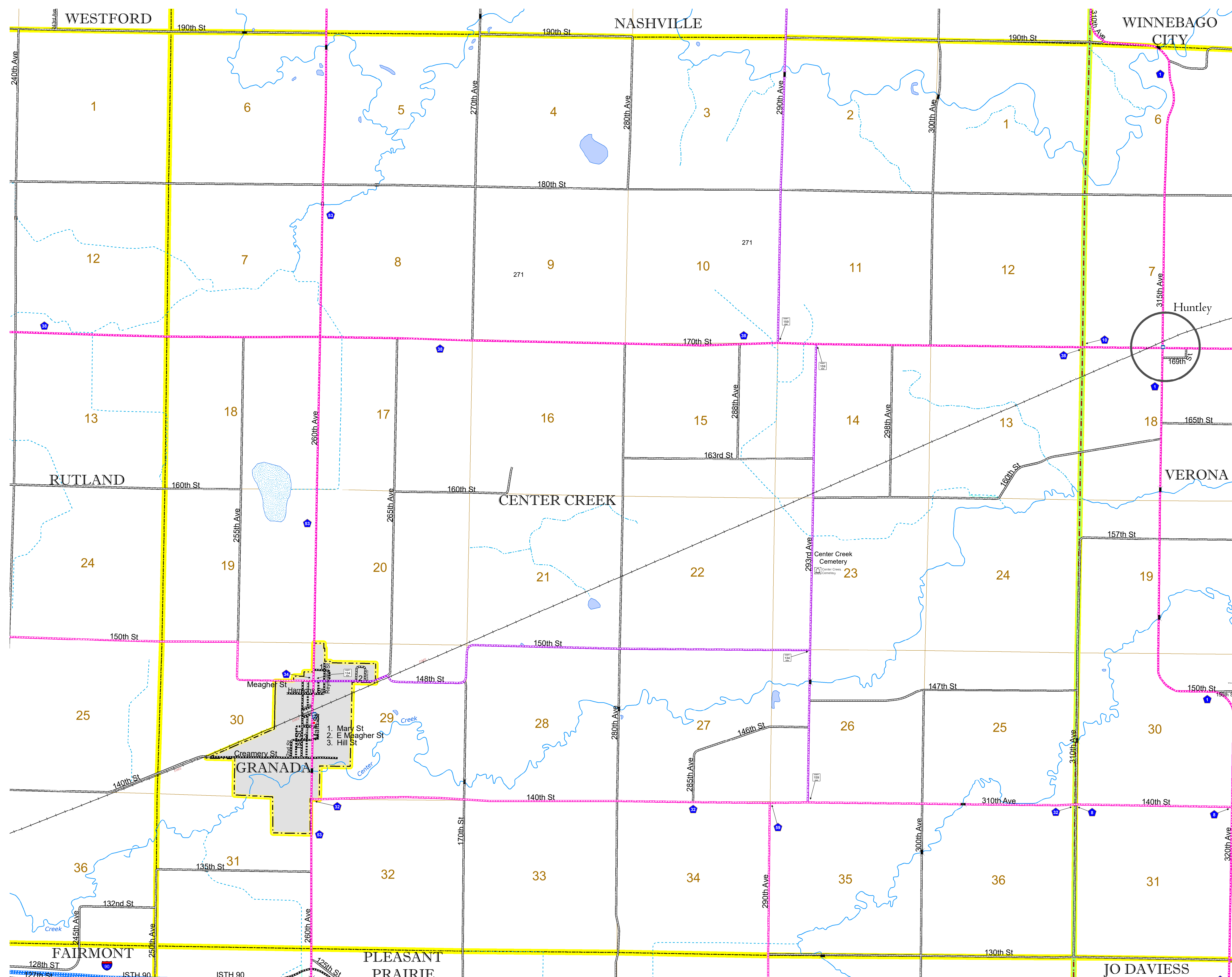
1 in = 1,600 ft

2022

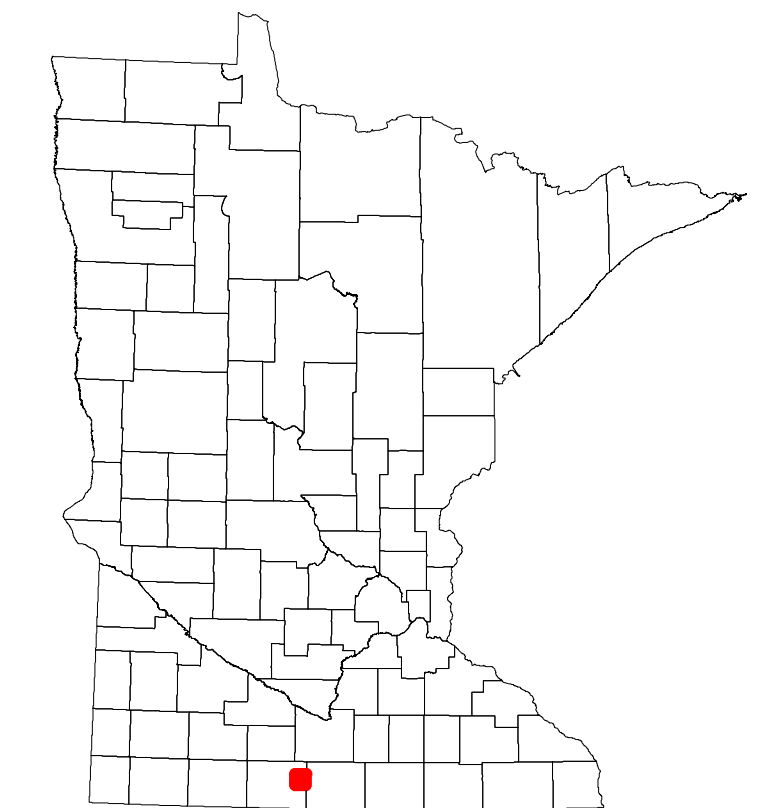
Projection:
Transverse Mercator
NAD 1986
UTM Zone 15



North American Datum
of 1986



ROAD AND ROADWAY FEATURES		BOUNDARY FEATURES	
INTERSTATE	CONCRETE	TRIBAL LAND	STATE OF MINNESOTA
US HIGHWAY	BITUMINOUS	COUNTY	MUNICIPALITY
MN HIGHWAY	GRAVEL	UNORGANIZED TERRITORY	FEDERAL ADJUSTED URBAN AREA (2014)
COUNTY STATE AID HIGHWAY	DIRT/UNIMPROVED	CIVIL TOWNSHIP	CONGRESSIONAL TOWNSHIP
COUNTY ROAD	OTHER	SECTION	MILITARY
TOWNSHIP ROAD	UNKNOWN	VOYAGEURS NATIONAL PARK	BOUNDARY WATERS CANOE AREA WILDERNESS
UNORGANIZED TERRITORY ROAD		STATE PARK	REGIONAL PARK
OTHER ROADS		NATIONAL FOREST	NATIONAL AND STATE FOREST
Municipal		STATE FOREST	NATIONAL TRAIL
Private		WILDLIFE REFUGEE AREA	WILDLIFE MANAGEMENT AREA
National Monument		WILDLIFE REFUGEE AREA	HYDROLOGIC FEATURES
National Wildlife		RIVER OR STREAM (PERMANENT)	LAKE, POND OR RESERVOIR
State Game		STREAM (INTERMITTENT)	DRAINAGE DITCH
Preserve		WETLAND	ISLAND OR LAND
		REGIONAL WATERSHED	
RAILROAD AND RAILWAY FEATURES		AVIATION FEATURES	
EMPIRE BUILDER STATION (AMTRAK)	COMMERCIAL AIRPORT	GENERAL AIRPORT	AIRSTRIP
NORTHSTAR STATION (COMMUTER)	SEAPLANE	AIRPORT RUNWAY	
LIGHT RAIL			
BLUE LINE			
GREEN LINE			
INFRASTRUCTURE FEATURES		CITY CENTERS	
LONG BRIDGE (200' OR GREATER SPAN)	STATE CAPITAL	COUNTY SEAT	CITY CENTER
MAJOR BRIDGE (20' TO 200' SPAN)	UNINCORPORATED COMMUNITY		
MINOR BRIDGE (5' TO 20' SPAN)			
DAM			
LOCK AND DAM			
PUBLIC SERVICE FEATURES		CULTURAL FEATURES	
MNDOT OFFICE	STATE HISTORICAL MARKER	HISTORIC DISTRICT	HISTORIC SITE
MNDOT TRUCK STATION			
HIGHWAY PATROL DISTRICT OFFICE			
STATE TRAVEL INFORMATION CENTER			
REST AREA (FULL SERVICE)			
REST AREA (VAULT TOILET)			
WAYSIDE (VAULT OR PITY TOILET)			
PARK AND RIDE LOT			
PORT OF ENTRY			
PUBLIC ACCESS POINT			
MN STATE COLLEGE AND UNIVERSITY SYSTEM (MNSCU)			
UNIVERSITY OF MN SYSTEM			
FAIRGROUNDS			



Population (U.S. Census 2010): 217

To request information from this document in an alternative format, call 651-366-4718 or 1-800-657-3774 (Greater Minnesota); 711 or 1-800-627-3529 (Minnesota Relay). You may also send an e-mail to ADRequest.dot@state.mn.us. (Please request at least one week in advance.)