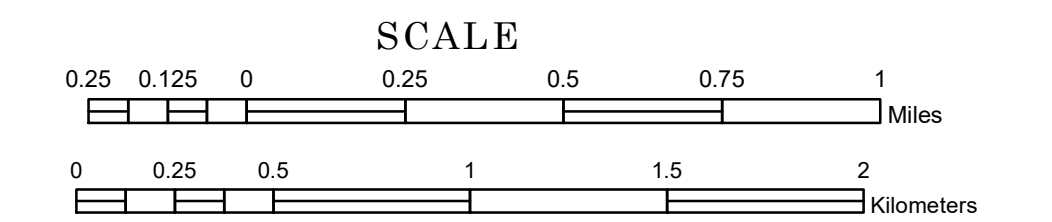


# TOWNSHIP OF GREENBUSH

PREPARED BY THE  
MINNESOTA DEPARTMENT OF TRANSPORTATION  
OFFICE OF TRANSPORTATION SYSTEM MANAGEMENT

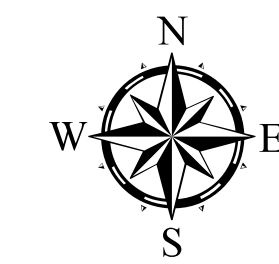
IN COOPERATION WITH  
U.S. DEPARTMENT OF TRANSPORTATION  
FEDERAL HIGHWAY ADMINISTRATION



1 in = 1,600 ft

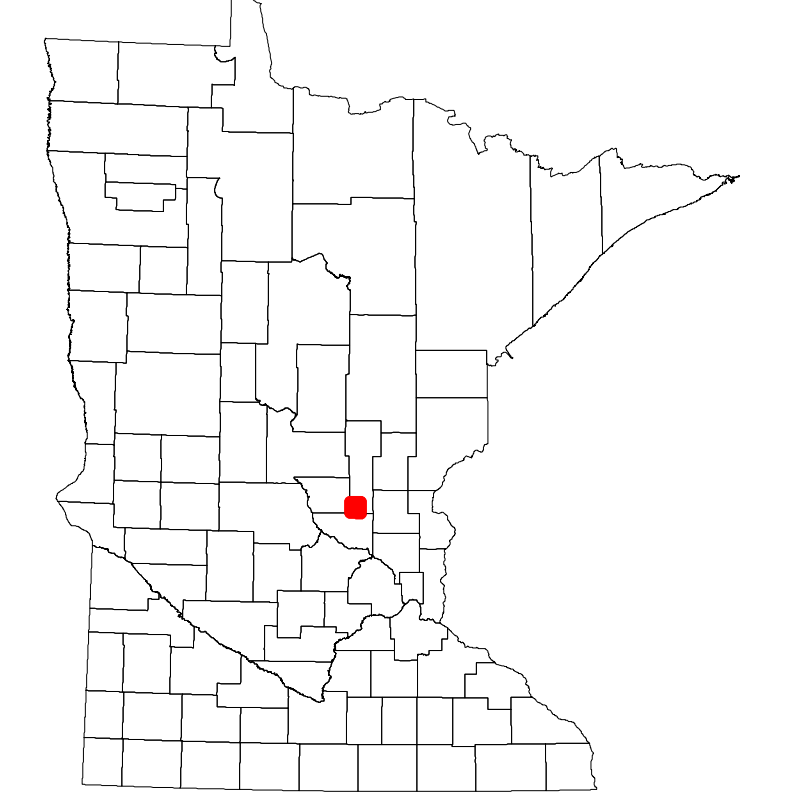
2022

Projection:  
Transverse Mercator  
NAD 1986  
UTM Zone 15

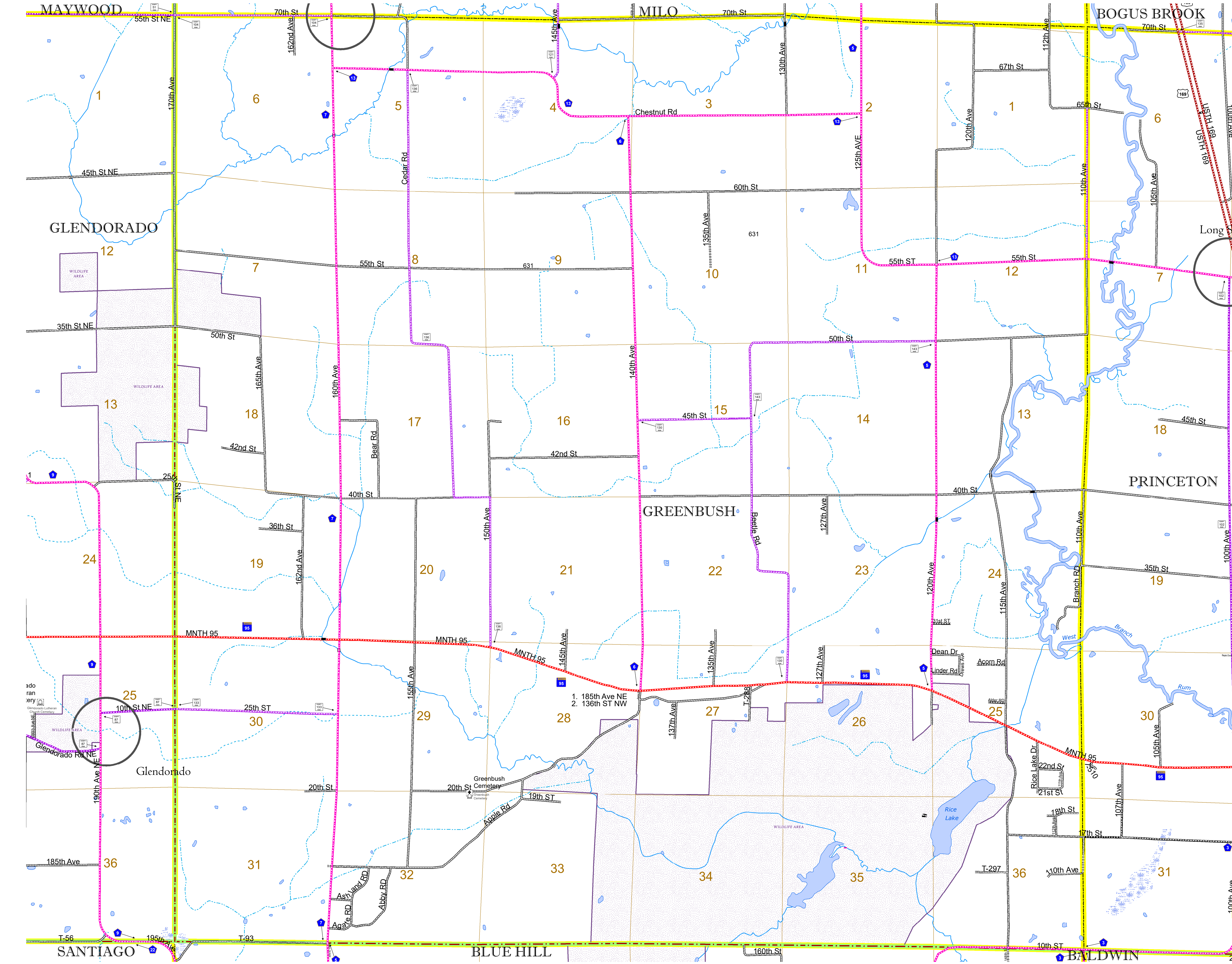


North American Datum  
of 1986

ROAD AND ROADWAY FEATURES		BOUNDARY FEATURES	
INTERSTATE	CONCRETE	TRIBAL LAND	SECTION
US HIGHWAY	BITUMINOUS	STATE OF MINNESOTA	MILITARY
MN HIGHWAY	GRAVEL	COUNTY	VOYAGEURS NATIONAL PARK
COUNTY STATE AID HIGHWAY	DIRT/UNIMPROVED	MUNICIPALITY	BOUNDARY WATERS CANOE AREA WILDERNESS
TOWNSHIP ROAD	OTHER	UNORGANIZED TERRITORY	STATE PARK
UNORGANIZED TERRITORY ROAD	UNKNOWN	FEDERAL ADJUSTED URBAN AREA (2014)	NATIONAL FOREST
OTHER ROADS		CIVIL TOWNSHIP	NATIONAL AND STATE FOREST
Municipal	Private	CONGRESSIONAL TOWNSHIP	STATE FOREST
Nature Service	National Monument	COMMUNITY	WILDLIFE REFUGE AREA
Military	National Wildlife	UNINCORPORATED	WILDLIFE MANAGEMENT AREA
RAILROAD AND RAILWAY FEATURES		HYDROLOGIC FEATURES	
RAILROAD	AVIATION FEATURES	LAKE, POND OR RESERVOIR	CULTURAL FEATURES
EMPIRE BUILDER STATION (AMTRAK)	COMMERCIAL AIRPORT	STREAM (PERMANENT)	STATE HISTORICAL MARKER
NORTHSTAR STATION (COMPUTER)	GENERAL AIRPORT	DRAINAGE DITCH	HISTORIC DISTRICT
LIGHT RAIL	AIRSTRIP	WETLAND	HISTORIC SITE
BLUE LINE	SEAPLANE	ISLAND OR LAND	MONUMENT
GREEN LINE	AIRPORT RUNWAY	REGIONAL WATERSHED	
INFRASTRUCTURE FEATURES			
LONG BRIDGE (200' OR GREATER SPAN)			
MAJOR BRIDGE (20' TO 200' SPAN)			
MINOR BRIDGE (5' TO 20' SPAN)			
DAM			
LOCK AND DAM			
CITY CENTERS			
STATE CAPITAL	COUNTY SEAT		
CITY CENTER	UNINCORPORATED		
COMMUNITY			
PUBLIC SERVICE FEATURES			
MN DOT OFFICE			
MN DOT TRUCK STATION			
HIGHWAY PATROL DISTRICT OFFICE			
STATE TRAVEL INFORMATION CENTER			
REST AREA (FULL SERVICE)			
REST AREA (VAULT TOILET)			
WAYSIDE (VAULT OR PIT TOILET)			
PARK AND RIDE LOT			
PORT OF ENTRY			
PUBLIC ACCESS POINT			
MN STATE COLLEGE AND UNIVERSITY SYSTEM (MNSCU)			
UNIVERSITY OF MN SYSTEM			
FAIRGROUNDS			



Population (U.S. Census 2010): 1293



To request information from this document in an alternative format, call 651-366-4718 or 1-800-657-3774 (Greater Minnesota); 711 or 1-800-627-3529 (Minnesota Relay). You may also send an e-mail to ADRequest.dot@state.mn.us. (Please request at least one week in advance.)