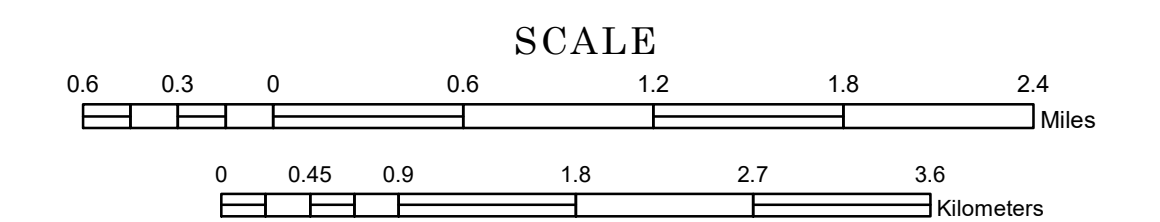


# TOWNSHIP OF SCANDIA VALLEY

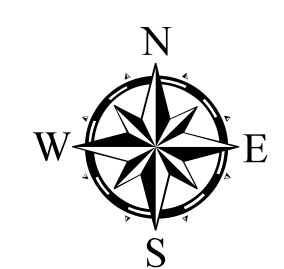
PREPARED BY THE  
MINNESOTA DEPARTMENT OF TRANSPORTATION  
OFFICE OF TRANSPORTATION SYSTEM MANAGEMENT

IN COOPERATION WITH  
U.S. DEPARTMENT OF TRANSPORTATION  
FEDERAL HIGHWAY ADMINISTRATION



1 in = 3,200 ft

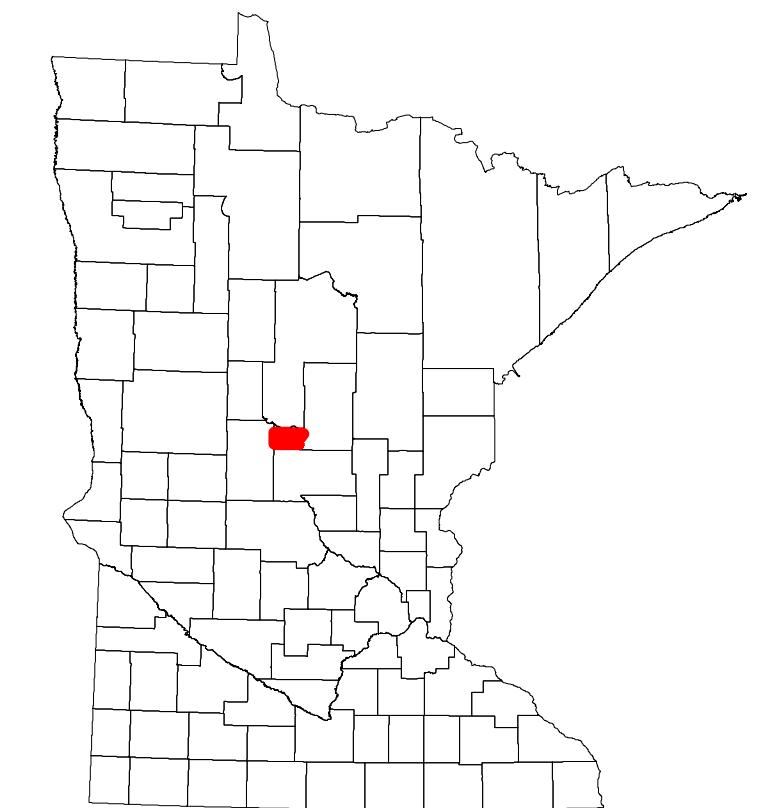
2023



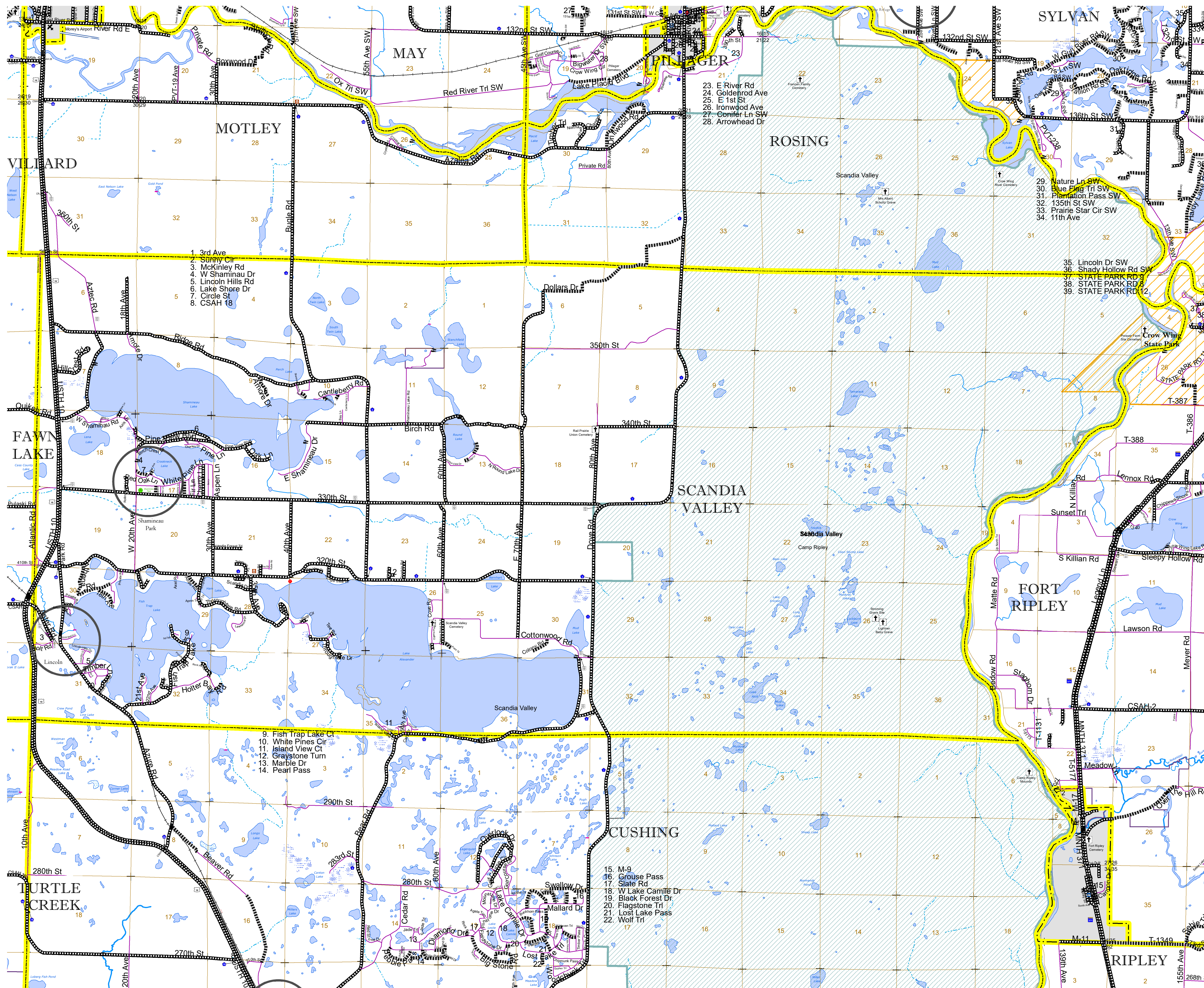
Projection:  
Transverse Mercator  
NAD 1986  
UTM Zone 15

North American Datum of 1986

ROAD AND ROADWAY FEATURES		AVIATION FEATURES	
INTERSTATE		COMMERCIAL AIRPORT	
US HIGHWAY		GENERAL AIRPORT	
MN HIGHWAY		AIRSTRIP	
COUNTY STATE AID HIGHWAY		SEAPLANE	
COUNTY ROAD		AIRPORT RUNWAY	
TOWNSHIP ROAD			
UNORGANIZED TERRITORY ROAD			
OTHER ROADS			
Municipal			
Private			
National Monument			
State Forest			
Nature Service			
National Park			
National Wildlife			
State Game			
Museum			
State Park			
Passage			
RAILROAD AND RAILWAY FEATURES		BOUNDARY FEATURES	
EMPIRE BUILDER STATION (AMTRAK)		TRIBAL LAND	
NORTHSTAR STATION (COMPUTER)		STATE OF MINNESOTA	
INFRASTRUCTURE FEATURES		COUNTY	
LONG BRIDGE (200' OR GREATER SPAN)		MUNICIPALITY	
MAJOR BRIDGE (20' TO 200' SPAN)		UNORGANIZED TERRITORY	
MINOR BRIDGE (5' TO 20' SPAN)		FEDERAL ADJUSTED URBAN AREA (2014)	
DAM		CIVIL TOWNSHIP	
LOCK-AND-DAM		CONGRESSIONAL TOWNSHIP	
		SECTION	
		MILITARY	
		VOYAGEURS NATIONAL PARK	
		BOUNDARY WATERS CANOE AREA WILDERNESS	
		STATE PARK	
		REGIONAL PARK	
		NATIONAL FOREST	
		NATIONAL AND STATE FOREST	
		STATE FOREST	
		NATIONAL TRAIL	
		WILDLIFE REFUGE AREA	
		WILDLIFE MANAGEMENT AREA	
		HYDROLOGIC FEATURES	
		RIVER OR STREAM (PERENNIAL)	
		LAKE, POND OR RESERVOIR	
		STREAM (INTERMITTENT)	
		DRAINAGE DITCH	
		WETLAND	
		ISLAND OR LAND	
		REGIONAL WATERSHED	



Population (U.S. Census 2010): 1191



To request information from this document in an alternative format, call 651-366-4718 or 1-800-657-3774 (Greater Minnesota); 711 or 1-800-627-3529 (Minnesota Relay). You may also send an e-mail to ADRequest.dot@state.mn.us. (Please request at least one week in advance.)