

# TOWNSHIP OF GRAND PRAIRIE

PREPARED BY THE  
MINNESOTA DEPARTMENT OF TRANSPORTATION  
OFFICE OF TRANSPORTATION SYSTEM MANAGEMENT

IN COOPERATION WITH  
U.S. DEPARTMENT OF TRANSPORTATION  
FEDERAL HIGHWAY ADMINISTRATION



1 in = 1,600 ft

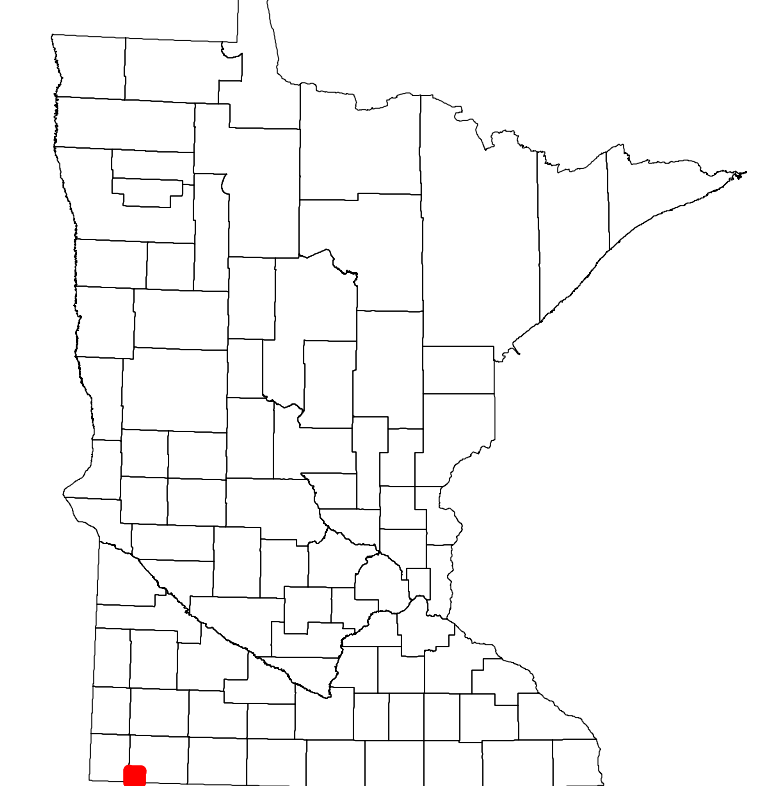
2022

Projection:  
Transverse Mercator  
NAD 1986  
UTM Zone 15

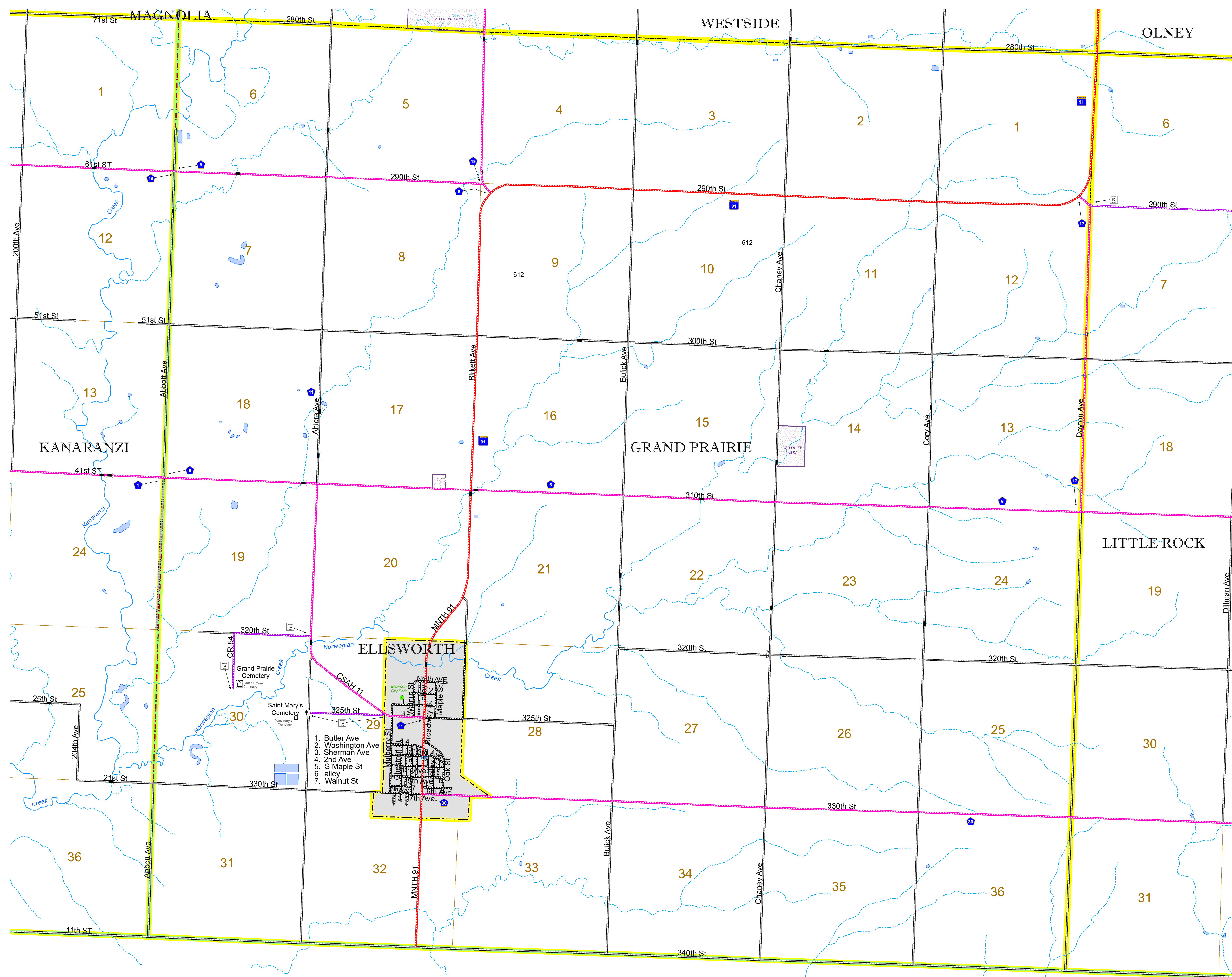


North American Datum  
of 1986

ROAD AND ROADWAY FEATURES		RAILROAD AND RAILWAY FEATURES		AVIATION FEATURES		BOUNDARY FEATURES	
INTERSTATE	CONCRETE	EMPIRE BUILDER STATION (AMTRAK)	COMMERCIAL AIRPORT	TRIBAL LAND	STATE OF MINNESOTA	STATE CAPITAL	SECTION
US HIGHWAY	BITUMINOUS	NORTHSTAR STATION (COMMUTER)	GENERAL AIRPORT	STATE OF MINNESOTA	COUNTY	COUNTY SEAT	MILITARY
MN HIGHWAY	GRAVEL	LIGHT RAIL	AIRSTRIP	COUNTY	MUNICIPALITY	CITY CENTER	VOYAGEURS NATIONAL PARK
COUNTY STATE AID HIGHWAY	DIRT/UNIMPROVED	BLUE LINE	SEAPLANE	MUNICIPALITY	UNINCORPORATED COMMUNITY	CITY CENTER	BOUNDARY WATERS CANOE AREA WILDERNESS
COUNTY ROAD	OTHER	GREEN LINE	AIRPORT RUNWAY	UNINCORPORATED TERRITORY	UNINCORPORATED COMMUNITY	CITY CENTER	STATE PARK
TOWNSHIP ROAD	UNKNOWN	LONG BRIDGE (200' OR GREATER SPAN)		FEDERAL ADJUSTED URBAN AREA (2014)	UNINCORPORATED COMMUNITY	CITY CENTER	NATIONAL FOREST
UNORGANIZED TERRITORY ROAD		MAJOR BRIDGE (20' TO 200' SPAN)		CIVIL TOWNSHIP	UNINCORPORATED COMMUNITY	CITY CENTER	NATIONAL AND STATE FOREST
OTHER ROADS		MINOR BRIDGE (5' TO 20' SPAN)		CIVIL TOWNSHIP	UNINCORPORATED COMMUNITY	CITY CENTER	STATE FOREST
MUNICIPAL	RAMP OR CONNECTOR	LOCK AND DAM		CIVIL TOWNSHIP	UNINCORPORATED COMMUNITY	CITY CENTER	WILDLIFE REFUGES AREA
PRIVATE	INTERSTATE EXIT			CIVIL TOWNSHIP	UNINCORPORATED COMMUNITY	CITY CENTER	WILDLIFE MANAGEMENT AREA
NATIONAL MONUMENT	GREAT RIVER ROAD			CIVIL TOWNSHIP	UNINCORPORATED COMMUNITY	CITY CENTER	HYDROLOGIC FEATURES
NATIONAL WILDLIFE REFUGES				CIVIL TOWNSHIP	UNINCORPORATED COMMUNITY	CITY CENTER	RIVER OR STREAM (PERMANENT)
STATE FOREST				CIVIL TOWNSHIP	UNINCORPORATED COMMUNITY	CITY CENTER	LAKE, POND OR RESERVOIR
STATE PARK				CIVIL TOWNSHIP	UNINCORPORATED COMMUNITY	CITY CENTER	STREAM (INTERMITTENT)
NATIONAL TRAIL				CIVIL TOWNSHIP	UNINCORPORATED COMMUNITY	CITY CENTER	DRAINAGE DITCH
WILDLIFE REFUGES AREA				CIVIL TOWNSHIP	UNINCORPORATED COMMUNITY	CITY CENTER	HISTORIC DISTRICT
WILDLIFE MANAGEMENT AREA				CIVIL TOWNSHIP	UNINCORPORATED COMMUNITY	CITY CENTER	HISTORIC SITE
HYDROLOGIC FEATURES				CIVIL TOWNSHIP	UNINCORPORATED COMMUNITY	CITY CENTER	MONUMENT
RIVER OR STREAM (PERMANENT)				CIVIL TOWNSHIP	UNINCORPORATED COMMUNITY	CITY CENTER	
LAKE, POND OR RESERVOIR				CIVIL TOWNSHIP	UNINCORPORATED COMMUNITY	CITY CENTER	
STREAM (INTERMITTENT)				CIVIL TOWNSHIP	UNINCORPORATED COMMUNITY	CITY CENTER	
DRAINAGE DITCH				CIVIL TOWNSHIP	UNINCORPORATED COMMUNITY	CITY CENTER	
HISTORIC DISTRICT				CIVIL TOWNSHIP	UNINCORPORATED COMMUNITY	CITY CENTER	
HISTORIC SITE				CIVIL TOWNSHIP	UNINCORPORATED COMMUNITY	CITY CENTER	
MONUMENT				CIVIL TOWNSHIP	UNINCORPORATED COMMUNITY	CITY CENTER	



Population (U.S. Census 2010): 206



1. Butler Ave
2. Washington Ave
3. Sherman Ave
4. 2nd Ave
5. S Maple St
6. S Maple St alley
7. Walnut St

To request information from this document in an alternative format, call 651-366-4718 or 1-800-657-3774 (Greater Minnesota); 711 or 1-800-627-3529 (Minnesota Relay). You may also send an e-mail to ADAREquest.dot@state.mn.us. (Please request at least one week in advance.)