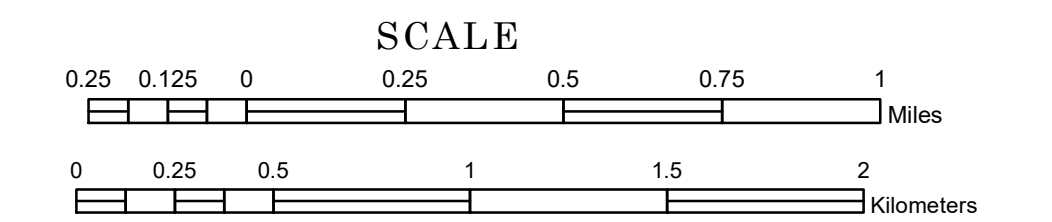


TOWNSHIP OF SUNDAL

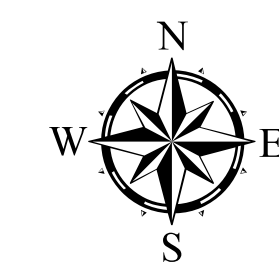
PREPARED BY THE
MINNESOTA DEPARTMENT OF TRANSPORTATION
OFFICE OF TRANSPORTATION SYSTEM MANAGEMENT

IN COOPERATION WITH
U.S. DEPARTMENT OF TRANSPORTATION
FEDERAL HIGHWAY ADMINISTRATION



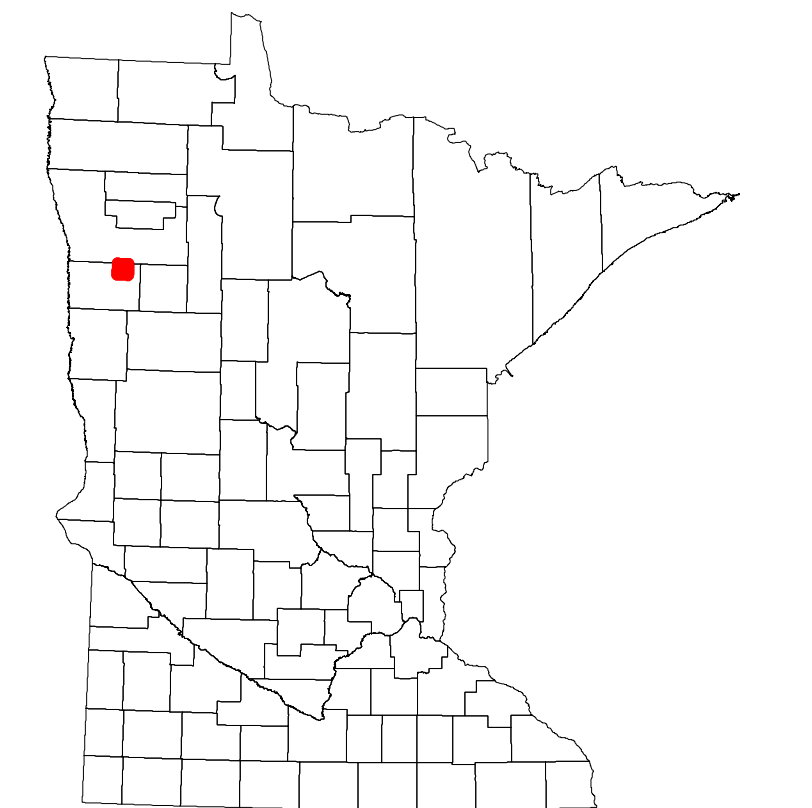
2022

Projection:
Transverse Mercator
NAD 1986
UTM Zone 15

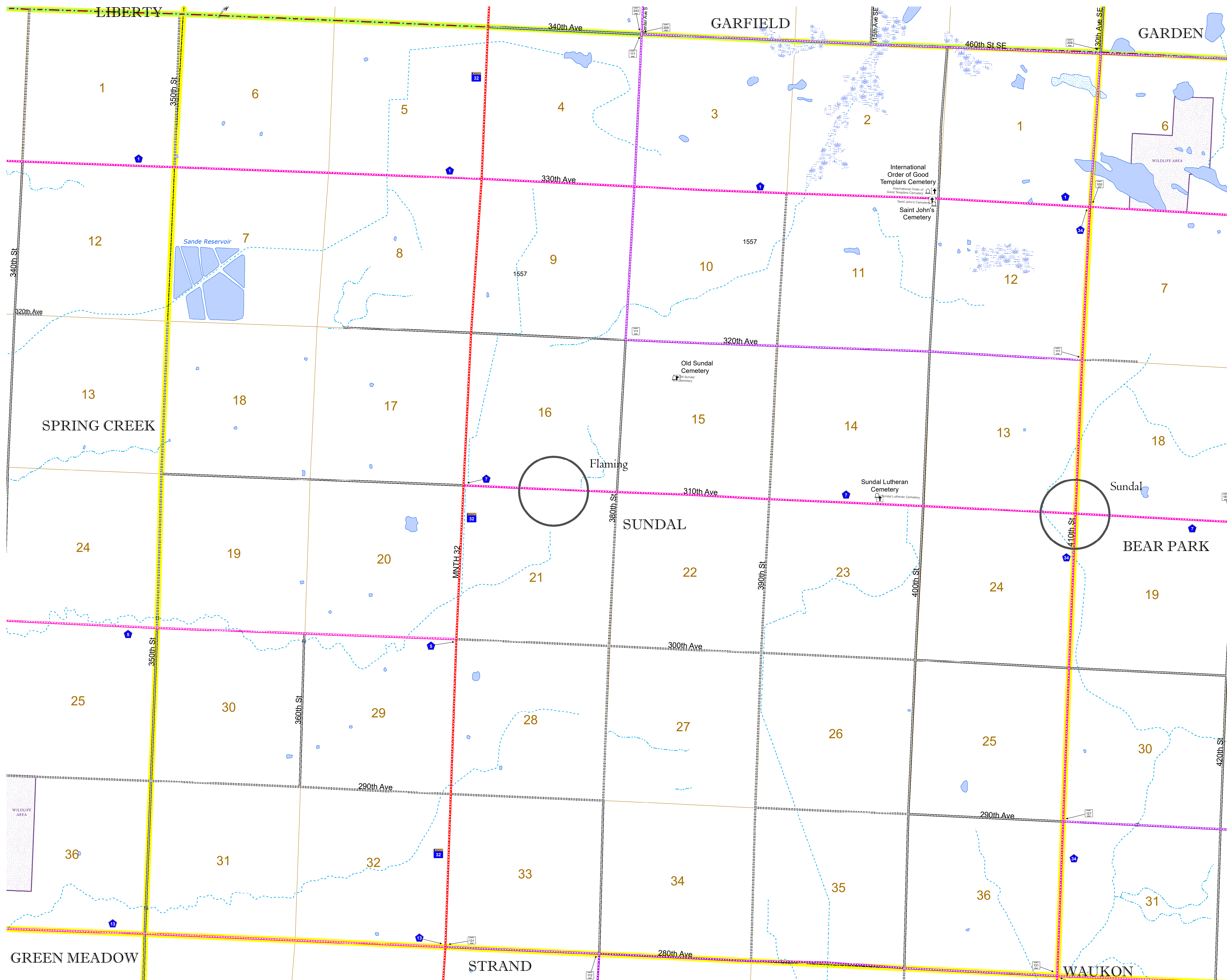


North American Datum
of 1986

ROAD AND ROADWAY FEATURES		BOUNDARY FEATURES	
INTERSTATE	CONCRETE	TRIBAL LAND	STATE OF MINNESOTA
US HIGHWAY	BITUMINOUS	COUNTY	MUNICIPALITY
MN HIGHWAY	GRAVEL	UNORGANIZED TERRITORY	FEDERAL ADJUSTED URBAN AREA (2014)
COUNTY STATE AID HIGHWAY	DIRT/UNIMPROVED	CIVIL TOWNSHIP	CONGRESSIONAL TOWNSHIP
COUNTY ROAD	OTHER	SECTION	MILITARY
TOWNSHIP ROAD	UNKNOWN	VOYAGEURS NATIONAL PARK	BOUNDARY WATERS CANOE AREA WILDERNESS
UNORGANIZED TERRITORY ROAD		STATE PARK	REGIONAL PARK
OTHER ROADS		NATIONAL FOREST	NATIONAL AND STATE FOREST
Municipal	RAMP OR CONNECTOR	STATE FOREST	NATIONAL TRAIL
Private	INTERSTATE EXIT	WILDLIFE REFUGUE AREA	WILDLIFE MANAGEMENT AREA
Nature Service	AVIATION FEATURES	WILDLIFE REFUGUE AREA	WILDLIFE MANAGEMENT AREA
National Monument	GENERAL AIRPORT	HYDROLOGIC FEATURES	HYDROLOGIC FEATURES
National Wildlife Refuge	AIRSTRIP	LAKE, POND OR RESERVOIR	LAKE, POND OR RESERVOIR
State Park	SEAPLANE	STREAM (PERMANENT)	STREAM (PERMANENT)
Preserve	AIRPORT RUNWAY	DRAINAGE DITCH	DRAINAGE DITCH
		WETLAND	WETLAND
		ISLAND OR LAND	ISLAND OR LAND
		REGIONAL WATERSHED	REGIONAL WATERSHED



Population (U.S. Census 2010): 157



To request information from this document in an alternative format, call 651-366-4718 or 1-800-657-3774 (Greater Minnesota); 711 or 1-800-627-3529 (Minnesota Relay). You may also send an e-mail to ADArequest.dot@state.mn.us. (Please request at least one week in advance.)