

EYOTA

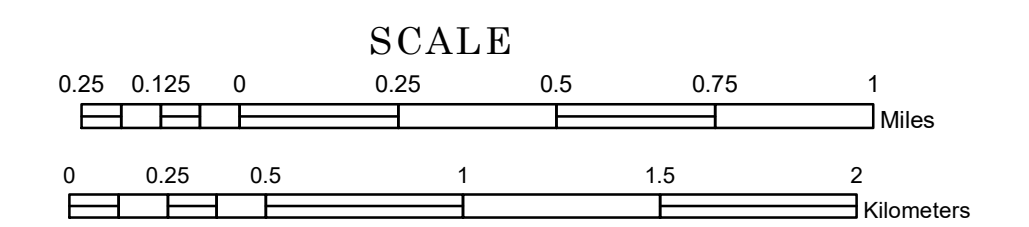
DOVER

SAINT CHARLES

TOWNSHIP OF ELMIRA

PREPARED BY THE
MINNESOTA DEPARTMENT OF TRANSPORTATION
OFFICE OF TRANSPORTATION SYSTEM MANAGEMENT

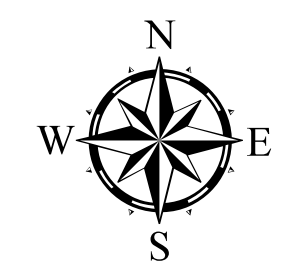
IN COOPERATION WITH
U.S. DEPARTMENT OF TRANSPORTATION
FEDERAL HIGHWAY ADMINISTRATION



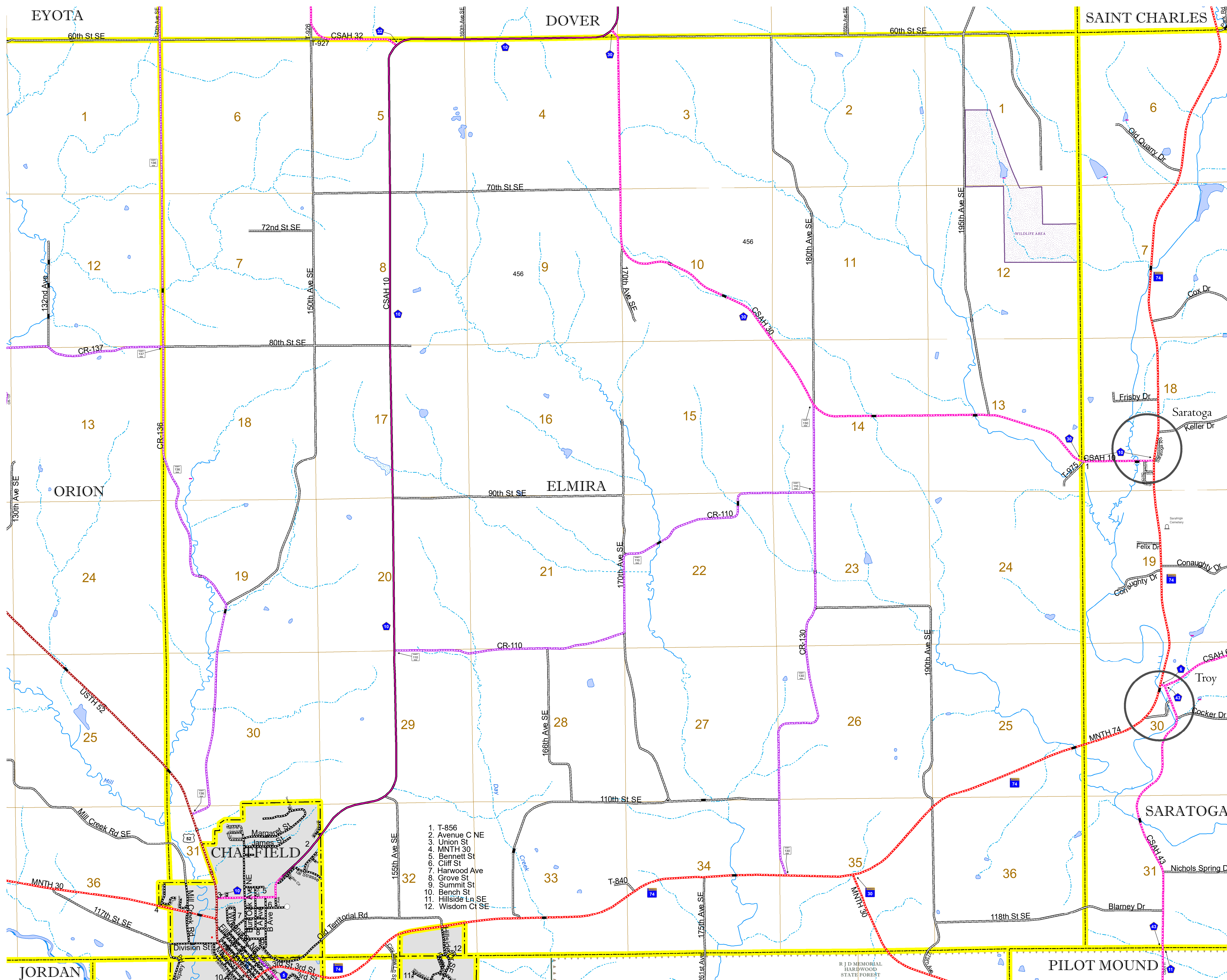
1 in = 1,600 ft

2023

Projection:
Transverse Mercator
NAD 1986
UTM Zone 15

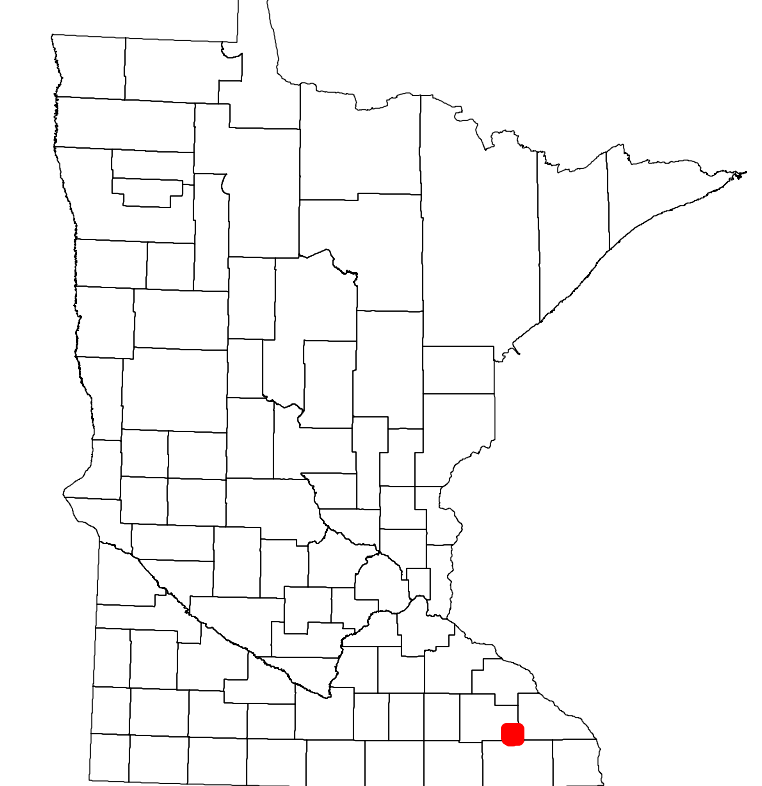


North American Datum
of 1986



ROAD AND ROADWAY FEATURES		BOUNDARY FEATURES	
INTERSTATE	CONCRETE	TRIAL LAND	TRIBAL LAND
US HIGHWAY	BITUMINOUS	STATE OF MINNESOTA	COUNTY
MN HIGHWAY	GRAVEL	MUNICIPALITY	MUNICIPALITY
COUNTY STATE AID HIGHWAY	DIRT/UNIMPROVED	UNORGANIZED TERRITORY	FEDERAL ADJUSTED URBAN AREA (2014)
COUNTY ROAD	OTHER	CIVIL TOWNSHIP	CIVIL TOWNSHIP
TOWNSHIP ROAD	UNKNOWN	CONGRESSIONAL TOWNSHIP	CONGRESSIONAL TOWNSHIP
UNORGANIZED TERRITORY ROAD		SECTION	MILITARY
OTHER ROADS		SECTION	MILITARY
Municipal	RAMP OR CONNECTOR	VOYAGEURS NATIONAL PARK	VOYAGEURS NATIONAL PARK
Private	INTERSTATE EXIT	BOUNDARY WATERS CANOE AREA WILDERNESS	BOUNDARY WATERS CANOE AREA WILDERNESS
National Monument		STATE PARK	STATE PARK
National Wildlife Refuge		REGIONAL PARK	REGIONAL PARK
National Forest		NATIONAL FOREST	NATIONAL FOREST
State Park		NATIONAL AND STATE FOREST	NATIONAL AND STATE FOREST
Preserve		STATE FOREST	STATE FOREST
		WILDLIFE REFUGUE AREA	WILDLIFE REFUGUE AREA
		WILDLIFE MANAGEMENT AREA	WILDLIFE MANAGEMENT AREA
		HYDROLOGIC FEATURES	HYDROLOGIC FEATURES
		RIVER OR STREAM (PERMANENT)	RIVER OR STREAM (PERMANENT)
		LAKE, POND OR RESERVOIR	LAKE, POND OR RESERVOIR
		STREAM (INTERMITTENT)	STREAM (INTERMITTENT)
		DRAINAGE DITCH	DRAINAGE DITCH
		WETLAND	WETLAND
		ISLAND OR LAND	ISLAND OR LAND
		REGIONAL WATERSHED	REGIONAL WATERSHED

1. T-856
2. Avenue C NE
3. Union St
4. MNTH 30
5. Bennett St
6. Cliff St
7. Harwood Ave
8. Grove St
9. Summit St
10. Bench St
11. Hillside Ln SE
12. Wisdom Ct SE



Population (U.S. Census 2010): 354

To request information from this document in an alternative format, call 651-366-4718 or 1-800-657-3774 (Greater Minnesota); 711 or 1-800-627-3529 (Minnesota Relay). You may also send an e-mail to ADRequest.dot@state.mn.us. (Please request at least one week in advance.)