

# TOWNSHIP OF MAINE

PREPARED BY THE  
MINNESOTA DEPARTMENT OF TRANSPORTATION  
OFFICE OF TRANSPORTATION SYSTEM MANAGEMENT

IN COOPERATION WITH  
U.S. DEPARTMENT OF TRANSPORTATION  
FEDERAL HIGHWAY ADMINISTRATION

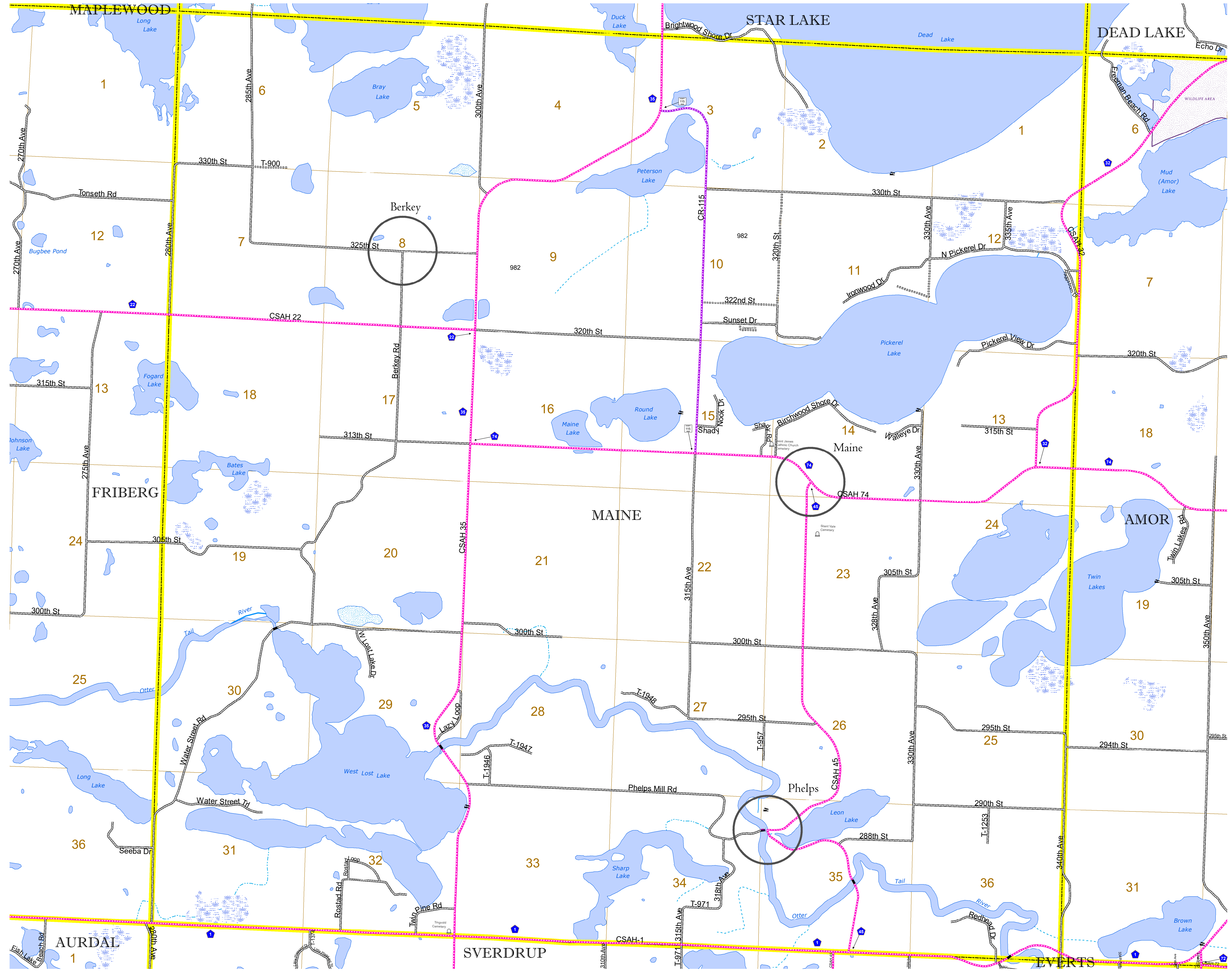


2023

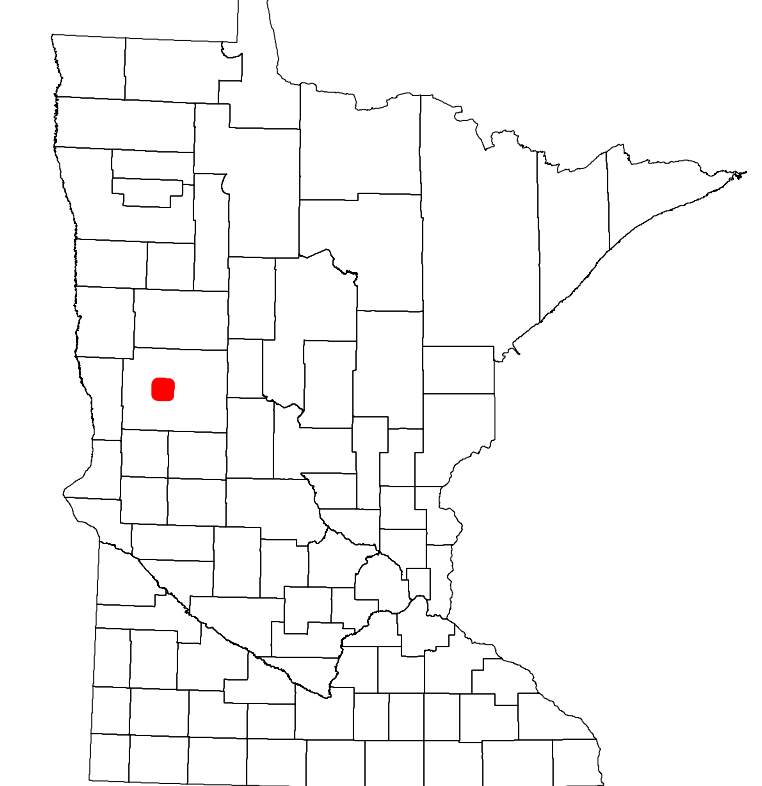
Projection:  
Transverse Mercator  
NAD 1986  
UTM Zone 15



North American Datum  
of 1986



ROAD AND ROADWAY FEATURES		AVIATION FEATURES	
INTERSTATE	CONCRETE	COMMERCIAL AIRPORT	TRIAL LAND
US HIGHWAY	BITUMINOUS	GENERAL AIRPORT	STATE OF MINNESOTA
MN HIGHWAY	GRAVEL	AIRSTRIP	COUNTY
COUNTY STATE AID HIGHWAY	DIRT/UNIMPROVED	SEAPLANE	MUNICIPALITY
COUNTY ROAD	OTHER	AIRPORT RUNWAY	UNORGANIZED TERRITORY
TOWNSHIP ROAD	UNKNOWN		FEDERAL ADJUSTED URBAN AREA (2014)
UNORGANIZED TERRITORY ROAD			CIVIL TOWNSHIP
OTHER ROADS:			CONGRESSIONAL TOWNSHIP
Municipal			SECTION
Private			MILITARY
National Monument			VOYAGEURS NATIONAL PARK
Nature Service			BOUNDARY WATERS CANOE AREA WILDERNESS
Museum			STATE PARK
			REGIONAL PARK
			NATIONAL FOREST
			NATIONAL AND STATE FOREST
			STATE FOREST
			NATIONAL TRAIL
			WILDLIFE REFUGUE AREA
			WILDLIFE MANAGEMENT AREA
			HYDROLOGIC FEATURES
			RIVER OR STREAM (PERENNIAL)
			LAKE, POND OR RESERVOIR
			STREAM (INTERMITTENT)
			DRAINAGE DITCH
			WETLAND
			ISLAND OR LAND
			REGIONAL WATERSHED



Population (U.S. Census 2010): 653

To request information from this document in an alternative format, call 651-366-4718 or 1-800-657-3774 (Greater Minnesota); 711 or 1-800-627-3529 (Minnesota Relay). You may also send an e-mail to ADarequest.dot@state.mn.us. (Please request at least one week in advance.)